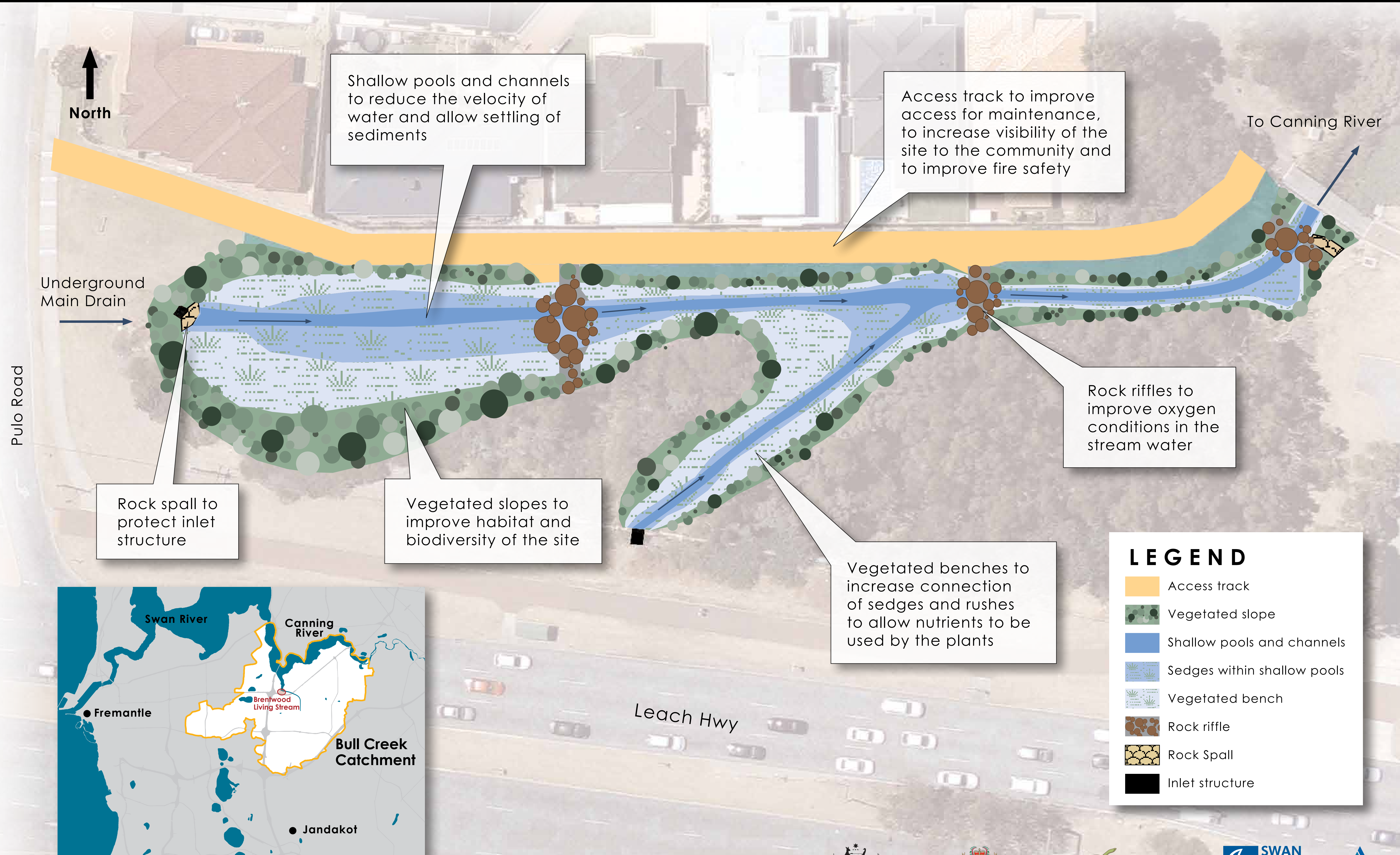


Kaalitj - ngort Koondam Dragonfly Dreaming



The construction and revegetation works at this site will transform the Brentwood Main Drain and Mandala Crescent Branch Drain into a living stream.

This project is designed to improve the quality of the water flowing from the drains and their catchments into the Canning River.

Other benefits include creating new habitats for native animals, improving the aesthetics and amenity for the local residents, improving the safety and accessibility of the reserve and creating opportunities for education.