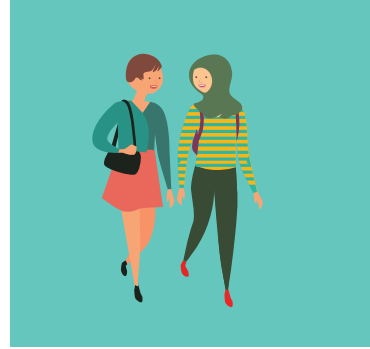




City of  
**Melville**

# ActiveLink

Connect with your community



# Easy English

# Hard words

This fact sheet has some hard words.

The first time we write a hard word

- the word is in **purple**
  - we write what the hard word means.
- 

This fact sheet is written  
by the City of Melville.

In this fact sheet **we**  
means the City of Melville.



# About this fact sheet

This fact sheet is about **ActiveLink**.

*ActiveLink is a program that helps people join community activities.*

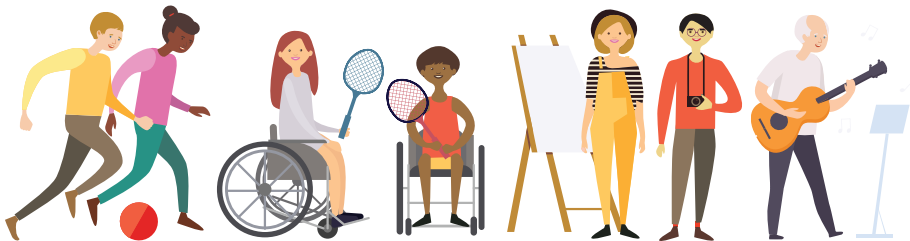
Community activities can be:

- Sport for example, soccer or tennis.

or

- **Hobbies** and groups.

*Hobbies means activities you enjoy.  
For example, music or art class.*



ActiveLink can help people in our community to make friends.

# How does it work?

We want people in our community to have good:

- Health
- Skills
- Friends
- **Self confidence**

*Self confidence is when you feel good about yourself.*



We work with different groups to make ActiveLink work.

For example:

- Sports clubs
- Community groups
- Social activities like art and dance
- Community centres.



We would like your activities to happen at places in the City of Melville.

# Who can use ActiveLink

ActiveLink is for people who:

- live in the City of Melville

and

- have a **low income.**

*Low income means you do not get much money to pay for things.*

---

You can show us proof of low income with a Centrelink concession or health care card.

If you do not have proof of low income, you can talk to us about your needs.

---



ActiveLink is also for people who identify as:

- living with a disability
- from an Aboriginal or Torres Strait Islander family
- people who are new to Australia
- people who don't speak English as their first language



# How much money can you get

You can get up to **\$300** each year to pay for activities.

We will email or post you a voucher that includes information about the amount of money we will provide for your activity.



You can then take the voucher to the activity provider when you start your activity.



# How to apply

To apply for ActiveLink get a form:

- on our website  
[www.melvillecity.com.au/ActiveLink](http://www.melvillecity.com.au/ActiveLink)  
or
- from a City of Melville centre.

*The centres with forms are:*

**City of Melville Civic Centre**

10 Almondbury Road, Booragoon

Call **9364 0666**

**Blue Gum Community Centre**

33 - 35 Moolyean Road, Brentwood

Call **9364 0148**

**Willagee Community Centre**

Corner of Archibald Street

and Winnacott Street, Willagee

Call **9364 0848**

# More information

## Call

1300 635 845 or 9364 0666.

## Email

[ActiveLink@melville.wa.gov.au](mailto:ActiveLink@melville.wa.gov.au)

## Write to

Locked Bag 1  
Booragoon WA 6954

## Visit the office

City of Melville Civic Centre  
10 Almondbury Road, Booragoon

## Website

[www.melvillecity.com.au/ActiveLink](http://www.melvillecity.com.au/ActiveLink)

---

## National Relay Service

**TTY 133 677**

Speak and Listen number:

**1300 555 727**

SMS relay number:

**0423 677 767**

**[www.relayservice.gov.au](http://www.relayservice.gov.au)**

---



## Telephone Interpreter Service

**131 450**



Copies of this document are available in an alternative format upon request. Please call **1300 635 845** and quote the publication name.

