

# YOUR GUIDE TO A SAFER AND MORE SECURE BUSINESS



Servicing your business safety needs, with a simple click!

Check out  
our **FREE**  
**ONLINE**  
**RESOURCE**



[www.melvillecity.com.au/businessguide](http://www.melvillecity.com.au/businessguide)



**SAFE AND  
SECURE**

The guide includes important community safety information, crime prevention tips and helpful resources on topics such as;

- ➔ Your physical premises
- ➔ You and your staff's safety
- ➔ Your customers/patrons
- ➔ People surrounding your business
- ➔ How the Community Safety Service (CSS) improves safety at your business
- ➔ How to improve the area your business is in



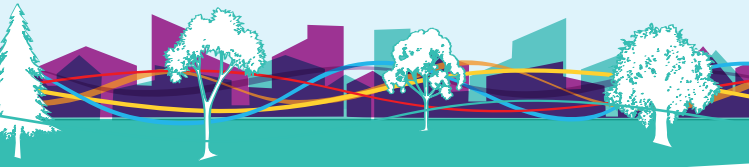
To access Your Guide to a Safer and more Secure Business, visit [www.melvillecity.com.au/businessguide](http://www.melvillecity.com.au/businessguide)





City of  
**Melville**

# Urban Forest



# RELEAF Melville

Help Grow our Urban Forest

Request your

**FREE VERGE TREE**

online at [www.melvillecity.com.au/trees](http://www.melvillecity.com.au/trees)  
or call **1300 635 845 | 9364 0666**

## Tree Benefits

- Could increase your property value
- Helps shade and cool your neighbourhood
- Improves air quality
- Food and habitat for wildlife



**CLEAN AND  
GREEN**




# The true value of trees

**Did you know we take care  
of the pruning, maintenance  
and health inspections of  
trees for you?**

It is an offense for residents to prune, remove or vandalise the City's trees and heavy penalties apply. Every case of tree vandalism costs the City of Melville's rate payers, and offenders will be fined.

Street trees are a significant part of our Urban Forest and are one of our most important assets, providing multiple social, economic and environmental benefits to the whole community.

**Trees can have  
an individual  
value of up to up  
to \$99,000!**



For more information, to request a tree service  
or your free verge tree, visit  
[www.melvillecity.com.au/trees](http://www.melvillecity.com.au/trees)



City of  
**Melville**

# CHECK OUT OUR ONLINE BUSINESS HUB!

[www.melvillecity.com.au/business](http://www.melvillecity.com.au/business)



## Resources and information available through the Business Hub:

- ✓ Alfresco dining permits
- ✓ Business grants
- ✓ Business safety
- ✓ Council policies, procedures and local laws
- ✓ Demographic and economic forecast data
- ✓ Home based businesses
- ✓ Melville Age-Friendly Accessible Business (MAFAB) network
- ✓ NBN for Business
- ✓ Online building and planning lodgement
- ✓ Permits and approvals
- ✓ Public health laws and regulations
- ✓ Sponsorship opportunities
- ✓ Sustainable businesses



# Get to know FOGO

(Food Organics, Garden Organics)



## FOGO

- ✓ Food Organics
- ✓ Garden Organics



## GENERAL WASTE

- ✓ General Rubbish
- ✓ Nappies
- ✓ Polystyrene & Meat Trays
- ✓ Hygiene Products



## RECYCLING

- ✓ Aluminium & Steel Cans
- ✓ Plastic Bottles & Containers
- ✓ Paper & Cardboard
- ✓ Glass Bottles & Jars

**If it didn't live or grow, it isn't FOGO**



Look out for your new bins due to be delivered during July, August and September 2019. When your two new bins arrive, leave your old green lidded bin out on the verge for collection and it will be removed the very next day. These old bins will be recycled or reused.



Get to know FOGO by visiting [www.melvillecity.com.au/FOGO](http://www.melvillecity.com.au/FOGO)



SUPPORTED BY



through the Waste Avoidance  
and Resource Recovery Account



# INVESTING IN A SAFER STATE

Every year, the Department of Fire and Emergency Services responds to tens of thousands of incidents, and works hard to prevent many more. Whether on land, sea or by air, our career and volunteer personnel work with communities to make Western Australia a safer place to live.

The Emergency Services Levy (ESL) continues to ensure that our people have the resources, training and support that they need to protect the Western Australian community. ESL funds are distributed across the State and aim to ensure that emergency services are available where and when they are needed most. This year the ESL will raise \$405 million with every cent going towards providing emergency services to the community.

## ESL RATES 2019-20

ESL rates vary according to the type of emergency services available to provide a primary emergency response to a property. Properties classified as ESL category 1 to 4 are charged based on the gross rental value (GRV) determined by the Valuer General and the declared ESL rate for that category. Charges are subject to minimum and maximum thresholds based on property use. Properties classified as ESL category 5 attract a fixed annual charge.

The table below shows the declared ESL rates and minimum and maximum charges applicable in 2019-20.

## ESL CONCESSIONS

If you are a pensioner or senior who qualifies for a rebate on your council rates, you will receive the same percentage of rebate on your ESL charge. These rebates are generally combined and printed as one amount on the council's rates notice for your property.

## LATE PAYMENT INTEREST

A late payment penalty of 11 per cent interest per annum is charged where the ESL payment is received after the due date detailed on your rates notice.

ESL Category	ESL Rate (per \$GRV)	Minimum & Maximum ESL Charges by Property Use			
		Residential, Vacant & Farming (non-commercial)		Commercial, Industrial & Miscellaneous	
		Minimum	Maximum	Minimum	Maximum
1	\$0.014839	\$84	\$441	\$84	\$251,000
2	\$0.011129	\$84	\$330	\$84	\$188,000
3	\$0.007419	\$84	\$219	\$84	\$125,000
4	\$0.005194	\$84	\$154	\$84	\$87,000
5	Fixed Charge \$84	\$84	\$84	\$84	\$84
Mining Tenements	Fixed Charge \$84	\$84	\$84	\$84	\$84

## NEED MORE INFORMATION?

For more information, or to request brochures in large print, Braille or another language, please visit [dfes.wa.gov.au](http://dfes.wa.gov.au) or call 1300 136 099.



FOR A SAFER STATE



# WHAT THE 2019-20 EMERGENCY SERVICES LEVY WILL FUND IN WA



Volunteer and Career Fire and Rescue Services



State Emergency Services



Volunteer Fire and Emergency Services



Volunteer Marine Rescue Services



Volunteer Bush Fire Brigades



Aerial firefighting fleet



Community safety programs



Fire investigations



Triple zero communications centre



Training programs



Maintenance of facilities & equipment

## This year it also includes:

### **\$16.4 million**

towards the construction of new fire stations in Kensington, Cockburn, Northampton, Halls Creek, Margaret River and Gingin.

### **\$33.1 million**

for new facilities, fire trucks, equipment and running costs for State Emergency Service units and Bush Fire Brigades.

### **\$5 million**

for new facilities, vessels, equipment and running costs for Volunteer Marine Rescue Groups.

## \$25.8 million towards the DFES Rural Fire Division including:



### **\$6.2 million**

to establish the Bushfire Centre of Excellence for Western Australia.

### **\$14.3 million**

investment in bushfire risk management planning and mitigation activities to reduce the impact of bushfire on our communities.

## Working together to achieve community wellbeing for today and tomorrow

Did you know that every day you interact with the City of Melville? Whether its through visiting your local library, going for a walk at your local park, putting rubbish in your bin or even on your commute to work, you use products or services that the City operates and you contribute to through your annual rates payments.



## Frequently asked questions

### What is the Emergency Services Levy?

The Emergency Service Levy helps fund WA's fire and emergency services, including fire stations, volunteer fire brigades, State Emergency Service (SES) units, the Volunteer Marine Rescue Service and the multi-purpose Volunteer Emergency Service Units.

This levy is a State Government charge and is required to be collected on behalf of the Department of Fire and Emergency Service (DFES) by all Western Australia Local Government Authorities. For more information, visit [www.dfes.wa.gov.au/esl](http://www.dfes.wa.gov.au/esl)

### What is the Property Surveillance Charge?

All properties are charged the Property Surveillance Charge which helps fund the City's Community Safety Service (CSS), a highly visible, 24/7 mobile patrol service that acts as extra eyes and ears for the community and police. For more information, visit [www.melvillecity.com.au/CSS](http://www.melvillecity.com.au/CSS)

### What is the Pool/Spa Inspection Fee?

In accordance with Building Regulations 2012, a Pool/Spa Inspection Fee is charged to properties that have a private pool or a spa containing water that is more than 300mm deep. It is used to fund the Swimming Pool Compliance Program, which includes inspection and advice to property owners on pool safety and legislative obligations. All pools in the City are inspected every four years. For more information, visit [www.melvillecity.com.au/pools](http://www.melvillecity.com.au/pools)

### What are these underground power charges?

Selected areas across the City are put forward and approved by Western Power for the undergrounding of overhead power lines.

The underground power charges are used to fund these projects in project suburbs. They consist of a network service charge and a network connection fee. The network service charge is the same for all properties in the project area. The network connection fee is only charged if a suitable connection doesn't already exist. If it does, no connection charge is applied. If a connection already exists but needs more work to connect to the network, a modified connection fee is charged. If no connection exists, then a full connection fee is charged.

### Do I have to pay the underground power charges all at once?

You do not have to pay it all at once. The City is able to offer payment arrangements to residents, with the option of spreading underground power charges over a repayment period of five years from the date of issue. Interest applies at 4% per annum calculated daily on any remaining underground power charges. For more information on the charges or underground power projects within the City of Melville, visit [www.melvillecity.com.au/undergroundpower](http://www.melvillecity.com.au/undergroundpower)



This document is available in alternate formats upon request. Please call 1300 635 845 and quote publication name.

## Budget newsletter

### Message from the Mayor

The City is working together with the community to achieve our vision for community wellbeing for today and tomorrow. Your annual rates payments contribute significantly towards these goals in so many ways. We hope this newsletter is helpful in showing you how the rates you pay contribute to your wellbeing and amenity.

With ever increasing costs, the City's priority every year is to keep the rate increase as low as possible, while working towards positive, long-term community outcomes and maintaining approximately \$841 million worth of assets that our community relies on each and every day.

With this in mind, I am very pleased to announce that the City has once again been able to deliver a low rates increase, this year of only 1.1%. This follows on from our lowest rate increase in 20 years of 0.9% in 2018-2019.

This result is achieved without any reduction in the products and services our community expects and enjoys and was possible due to our long-term financial planning. This approach ensures we take a long-term view of our finances, controlling our expenditure

and setting aside enough money in reserves for the renewal and upgrade of our substantial assets.

Annual rates are calculated as a percentage of the gross rental value (GRV) of properties, with a typical residential property in the City of Melville calculated at an annual GRV of \$25,824 per annum or approximately \$497 per week. In 2019-2020, the average rates (including waste and security charges) on an improved residential property will be \$1,792 (inclusive of a \$57.00 security charge.)

The City's total rates income of \$89.2 million has been carefully allocated to ensure operating service levels are maintained, together with an appropriate level of investment in the City's assets.

A full budget report is available at the City of Melville Civic Centre, all City of Melville libraries, or online at [www.melvillecity.com.au/budget](http://www.melvillecity.com.au/budget).

I wish you all a successful 2019-2020 financial year.

**Russell Aubrey**  
City of Melville Mayor



**Pay your rates early and WIN**

Pay your rates in full by Wednesday, 14 August 2019 for the chance to win one of seven great prizes!

- 3 x \$1,000 WESTRAC REWARD SAVER ACCOUNTS
- 4 X 1-YEAR HEALTHY LIFE PLUS MEMBERSHIPS TO LEISUREFIT

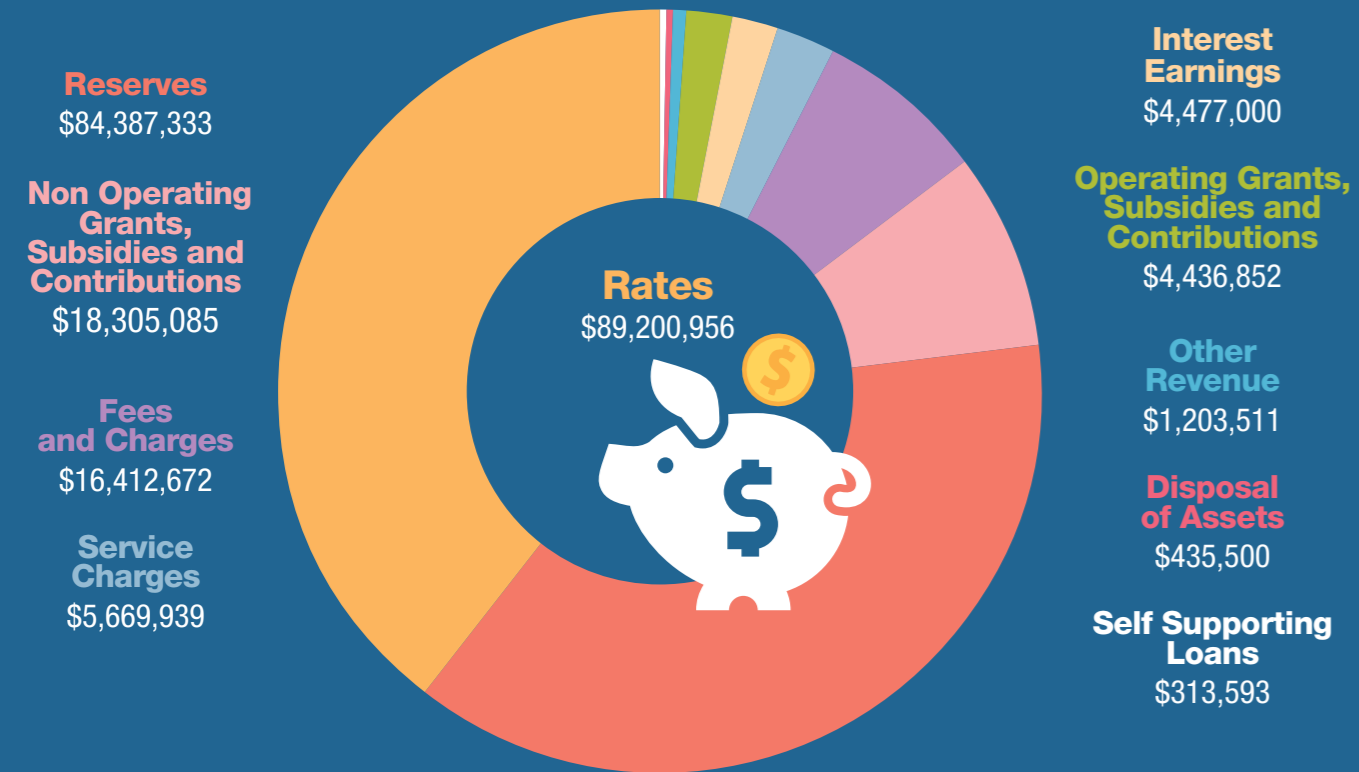
**Go paperless and be rewarded!**

Opt to receive your rates notice electronically by 5.00pm, Wednesday 28 August 2019 and you could win one of 16 prizes donated by local businesses!

- \$500 gift card from Garden City Shopping Centre
- 5 x \$100 gift vouchers from Raffles Hotel
- \$500 gift voucher for Skin Clinic services at Le Beau
- \$500 Coles/Myer voucher
- 6 x family passes to Cockburn Ice Arena
- 2 x double passes to Discovery Concert: The Art of Orchestration

For a full list of payment options and competition terms and conditions, visit [www.melvillecity.com.au/ratesprizedraw](http://www.melvillecity.com.au/ratesprizedraw)

# Where the money comes from



# Where the money goes

For every \$100 the City receives, it is spent on:



- |   |                               |                            |                                   |                        |
|---|-------------------------------|----------------------------|-----------------------------------|------------------------|
| \$ Parks and reserves                         | \$ Rubbish bin collections    | \$ Food regulation         | \$ Community Safety Service (CSS) | \$ Libraries           |
| \$ Street trees                               | \$ Bulk verge collections     | \$ Pests                   | \$ Community centres              | \$ Museums             |
| \$ Piney Lakes Environmental Education Centre | \$ Recycling                  | \$ Planning compliance     | \$ Youth and seniors programs     | \$ Art                 |
| \$ Roads, drainage and buildings              | \$ Paths                      | \$ Building compliance     | \$ Project Robin Hood             | \$ Community events    |
| \$ Street lighting                            | \$ Street cleaning            | \$ Pool inspections        | \$ LeisureFit centres             | \$ Customer service    |
| \$ Jetties and boat ramps                     | \$ Underground power projects | \$ Elected members support | \$ Recreational reserves          | \$ Volunteering        |
|   | \$ Noise                      | \$ Parking management      | \$ Corporate administration       | \$ Property management |
|   |                               | \$ Animals                 |                                   |                        |

Did you know the City has approximately \$841 million of built assets? This includes:

- 542km of roads
- 480km of footpaths
- 353km of drainage
- 18km of foreshore
- 202 parks and reserves
- 8.8 hectares of green space
- 26 playing fields
- 30 sporting clubrooms/facilities
- 5 libraries
- 3 recreation centres
- 4 community centres
- 1 environmental education centre
- 2 golf courses
- 5 child health centres
- 8 Scouts/Girl Guides halls
- 1 swimming pool

All these require ongoing maintenance and renewal which is mainly funded from reserves. Reserves are funds set aside each year, from rates and other sources, which help assist with the replacement and maintenance of assets so future generations can enjoy the same level of amenity. They are a key component of sound, long-term financial planning and help to smooth out rates fluctuations while ensuring the City has the funds available to replace infrastructure or assets without having to rely on rate hikes, external grants or loans.

# Snapshot of local capital works projects 2019-2020



Did you know the City has more than 34,000 street trees?

This is just a selection of capital works projects happening across the City in 2019-2020. For a full list and further information on these or other projects, visit [www.melvillecity.com.au/capitalworks](http://www.melvillecity.com.au/capitalworks)