



City of
Melville



Review of Dog Exercise Areas

Agenda Briefing Forum

13 July 2021





Consultation



Active

Review of Dog Exercise Areas

Thank you for sharing your views on dog access to parks and reserves.

- Open for public comment 21 January to 15 March 2021
- 78 written submissions on dog exercise areas (several dealing with multiple issues or parks)



Dog Exercise Areas

Dog Act 1976

- Dogs must be leashed in all public places unless they are specified as dog exercise areas (or are places where dogs are prohibited).
- Dog exercise areas and dog-prohibited areas must be specified by absolute majority resolution after a 28 day notification period.

City of Melville

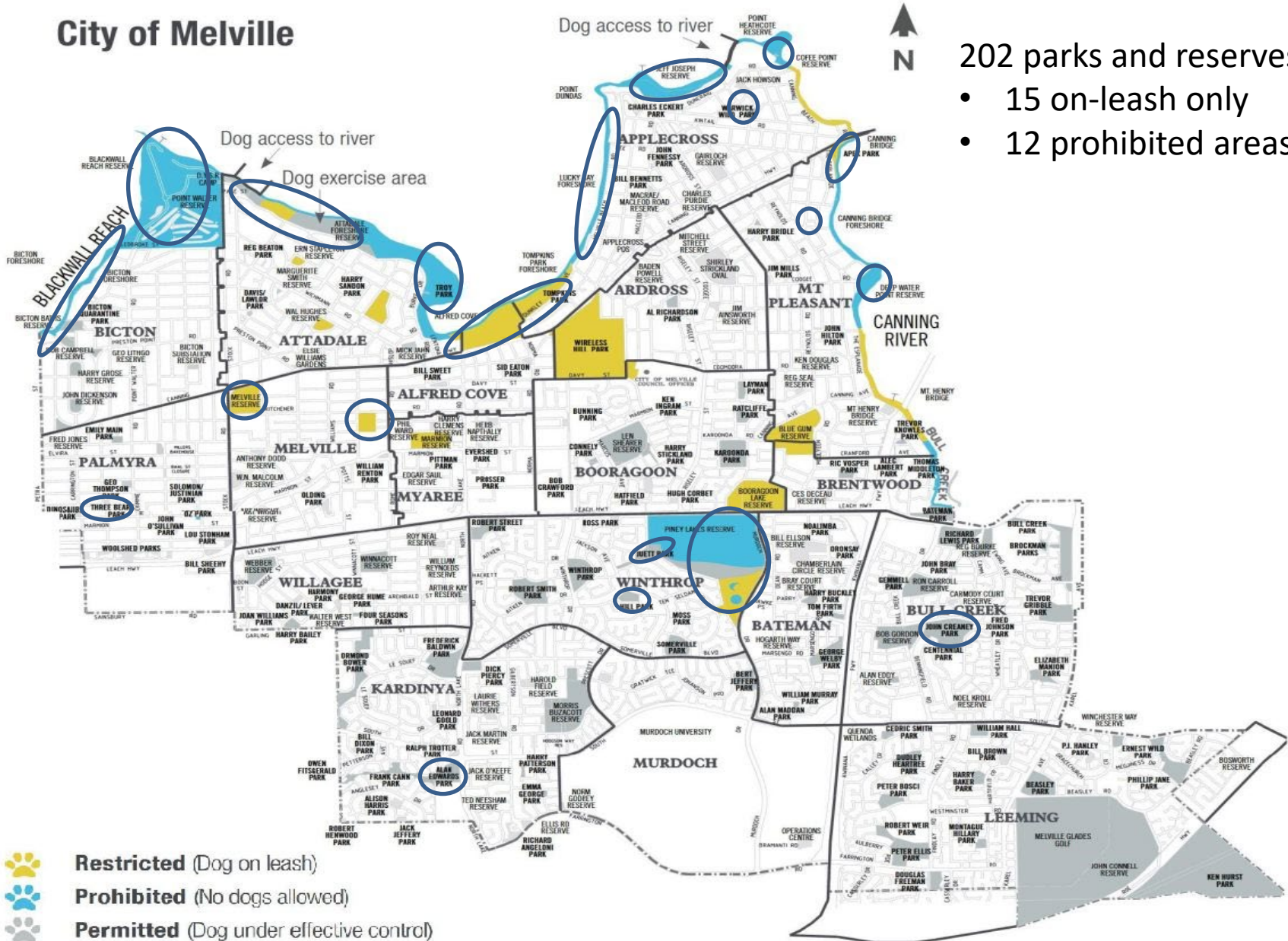
- Dogs may exercise off-leash in all public places except places specified as restricted (on-leash) or dog-prohibited areas
- Council resolution July 2014 under s. 31 of Dog Act superseded the City's *Dog Local Law 2005*



Dogs prohibited or restricted (on-leash)

- Dogs prohibited in:
 - Public buildings;
 - Areas set aside as a children’s playground, and
 - Specified areas in parks and reserves.
- Dogs must be leashed:
 - On paths and thoroughfares;
 - Civic Centre;
 - Designated foreshore areas;
 - Designated parks and reserves (or parts of them), either all the time or when events are underway.

City of Melville



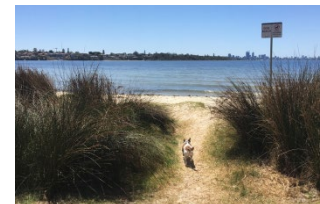
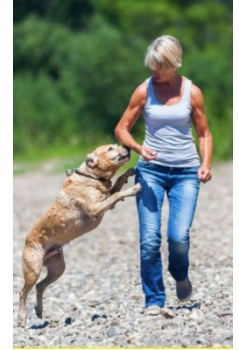
202 parks and reserves:

- 15 on-leash only
- 12 prohibited areas



Key Concerns

- Dogs not “under effective control” interfering with enjoyment of other users
- Owners not picking up dog excrement
- Not enough access to river for dogs to swim
- Some parks unsuitable for off-leash exercise due to conflict with needs of other users
- Non-compliance with rules by dog owners
- Not enough ranger presence in parks / inadequate enforcement





Recommendations (1)

1. Retain status where no change proposed + no public comment.
2. Specify new dog exercise areas – [Joan Williams Park](#), parts of [Marmion Reserve](#), [Melville Reserve](#) and [Tompkins Park](#), and new [swim area](#) at Bicton.
3. Cancel dog exercise areas – [Hill Park](#), [Juett Park](#), [Robert Crawford Park](#), [George Humes Park](#) and [William Reynolds Park](#) (dogs to be allowed on leash).
4. Prepare standard criteria for suitable dog exercise areas and assess all the City's current dog exercise areas against these.



Recommendations (2)

5. Deep Water Point – cancel dog-prohibited status for grassed area between café leased area and carpark/path.
6. Jeff Joseph Reserve – cancel dog-prohibited status for non-foreshore area: dogs to be allowed on-leash.
7. Point Walter Reserve – retain dog prohibited status in A-class reserve.



Next steps

If these recommendations are supported:

- Give **local public notice at least 28 days before the decision** is made (s.31(3C) of the *Dog Act 1976*) of the local government's intent to specify or cancel dog exercise areas or places where dogs are prohibited.
- **Specify by absolute majority** the new dog exercise areas, cancellation of dog exercise areas and places where dogs are prohibited.
- Ensure appropriate **signage** and public **notification** of changes.



City of
Melville

End

(Reference slides follow)



Bicton – Blackwall Reach Pde near Crewe St





City of
Melville

Deep Water Point – Dome Cafe





Jeff Joseph Reserve



Alan Edwards Reserve



Apex Reserve



Attadale Reserve



Bicton Foreshore/Blackwall Reach



Start of
Blackwall
Reach Reserve

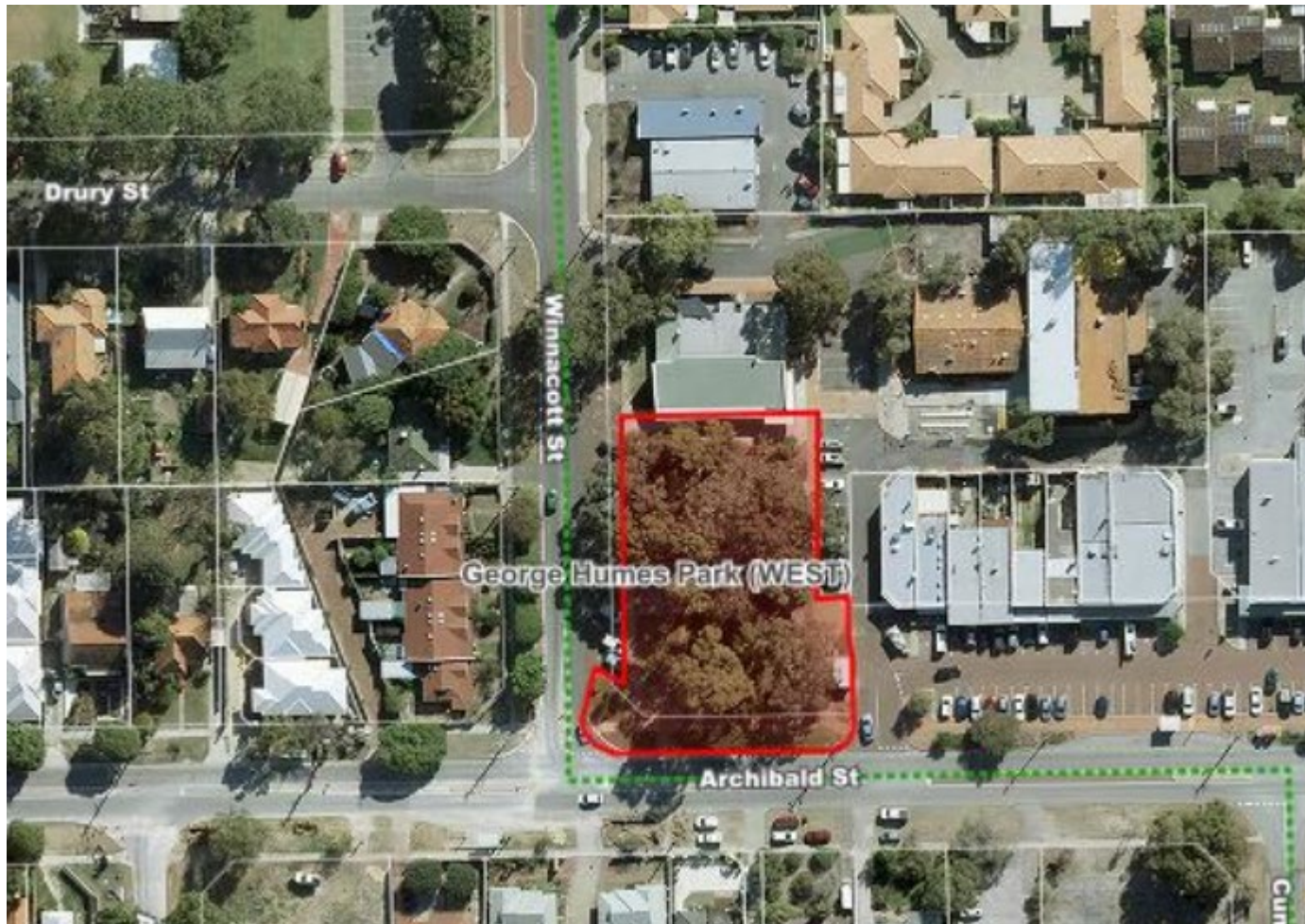
Bicton
Baths
Reserve



Deep Water Point Reserve



George Humes Park



Hill Park



Jeff Joseph Reserve



John Creaney Park



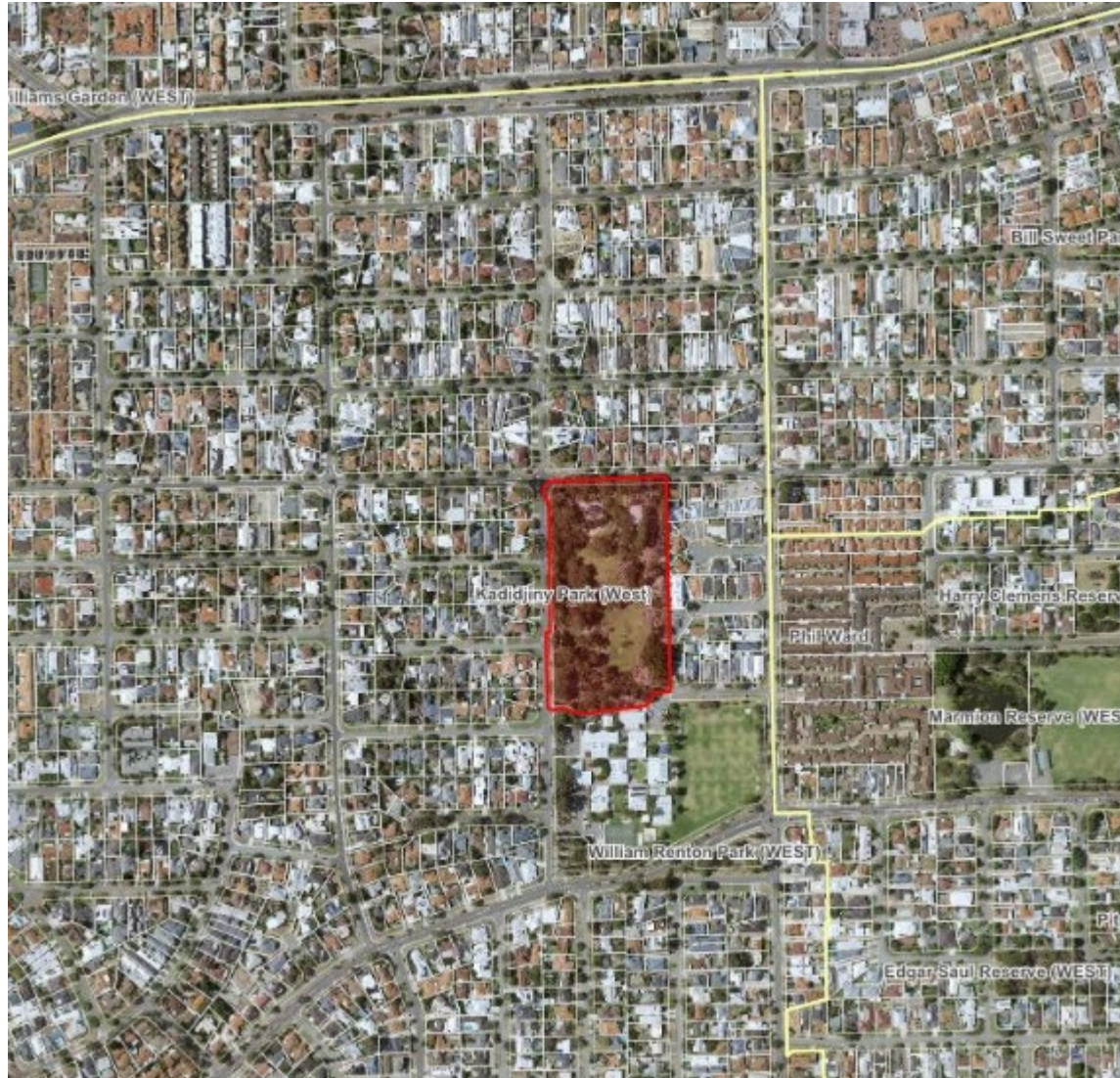
Joan Williams Park



Juett Park



Kadidjiny Park



Lucky Bay Foreshore



Marmion Reserve



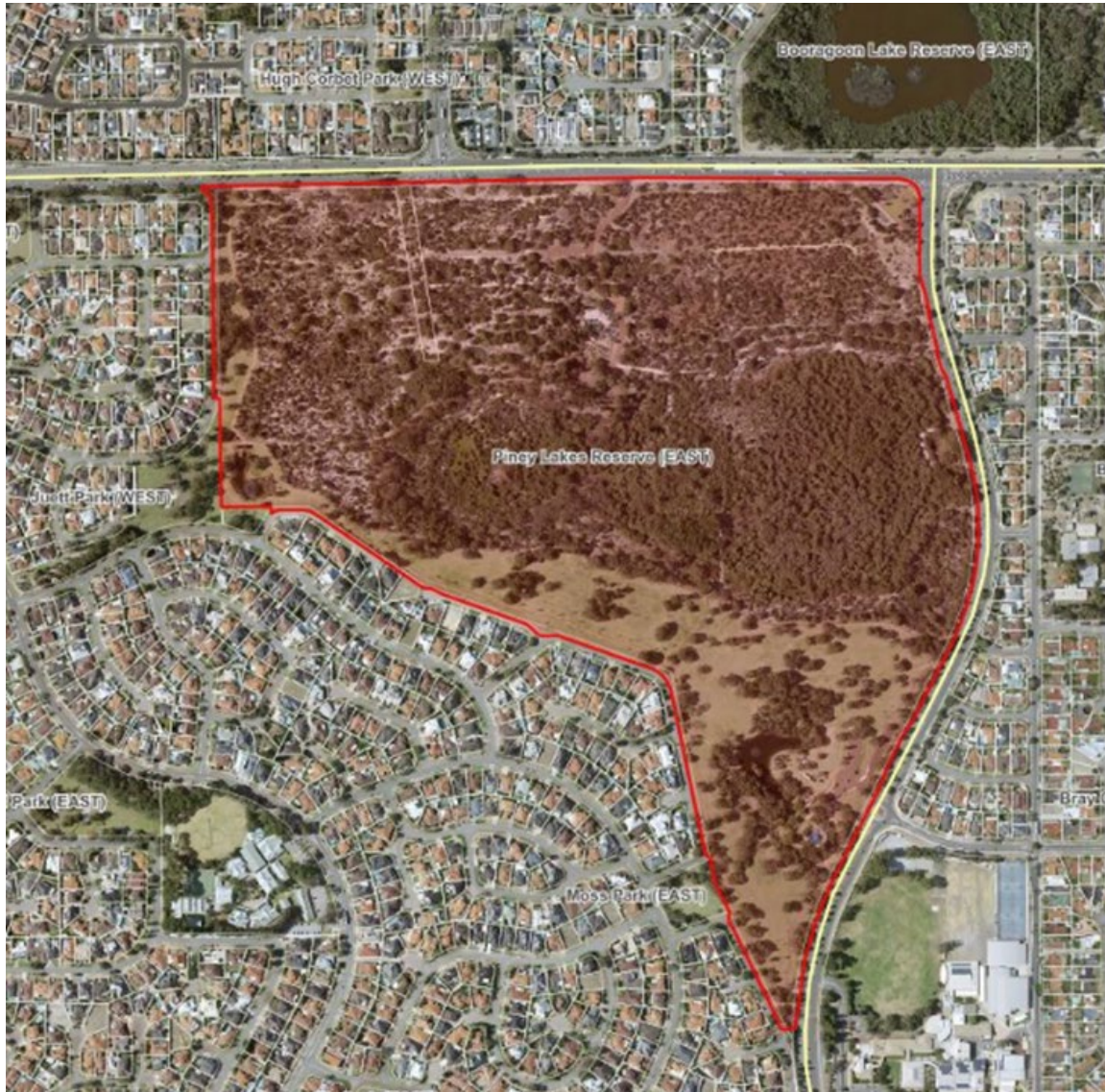
Melville Reserve



Ogilvie Rd Reserve



Piney Lakes Reserve



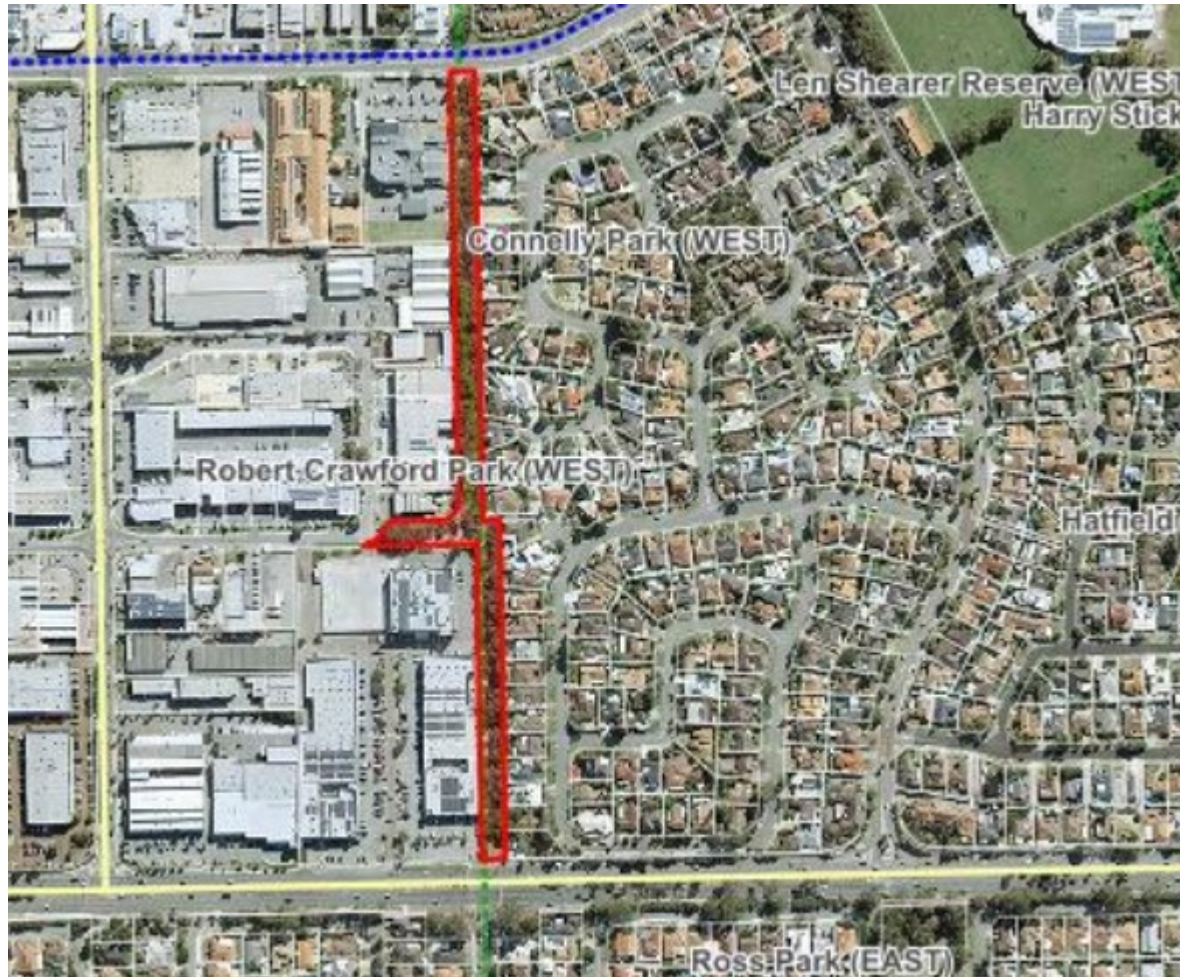
Point Heathcote Reserve



Point Walter Reserve



Robert Crawford Park



Three Bears Park



Three Bears Park



Tompkins Park



Troy Park



Warwick Wild Park



William Reynolds Park

