



Fenced Dog Play Park

CONCEPT PLAN September 2021

Total fenced area = 5,500m²



NOTE: This is not a final plan. Minor modifications can occur during quoting and construction phases



LEGEND

- ① MAIN ENTRY
 - dual-gated entrance
 - concrete path
 - dog waste bin
 - drinking fountain with dog bowl
 - entry garden
 - signage with park rules and etiquette.
- ② SECONDARY ENTRY/EXIT POINTS
 - dual-gated entrance
 - concrete path
- ③ SHELTER WITH SEATING
- ④ SEATS
- ⑤ DOG AGILITY EQUIPMENT
- ⑥ SERVICE GATES
- ⑦ 1.5m HIGH INTERNAL FENCE (solid dividing fence)
- ⑧ 1.8m HIGH BOUNDARY FENCE (chain wire fence)
- CONCRETE PATH
- RUN AND PLAY ZONE (existing turf with new irrigation)
- SAND PLAY ZONE
- SENSORY ZONE (mulch) with nature based equipment such as logs, stumps, funnels and boulders
- GARDEN BED AND PLANTING
- TRAINING ZONE (gravel)
- EXISTING TREES (all existing trees will be kept)
- NEW TREES

CONTEXT PLAN



INSPIRATIONAL IMAGES



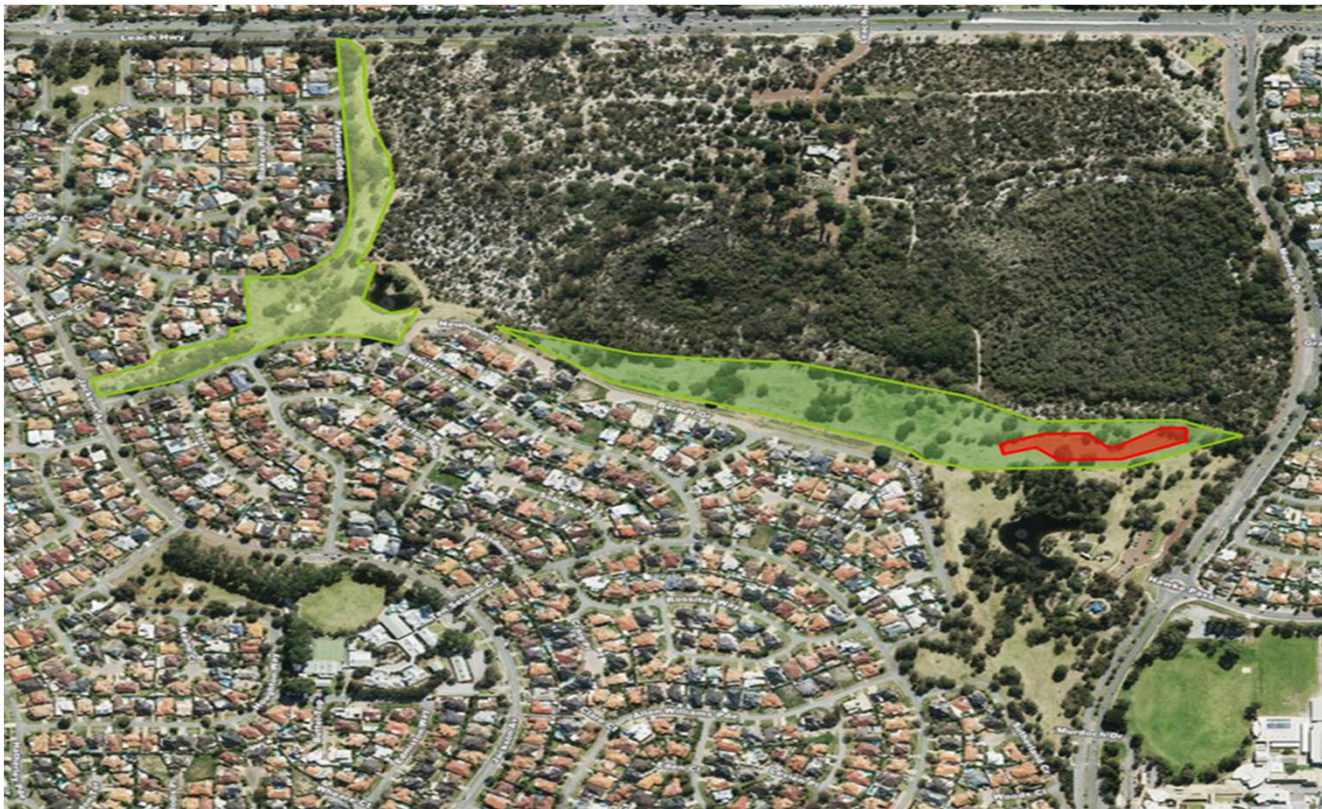
The different activities zones through the park were created to encourage movement, and to offer active spaces for dogs to play and run, and passive spaces for them to sniff, retreat and explore.



City of
Melville

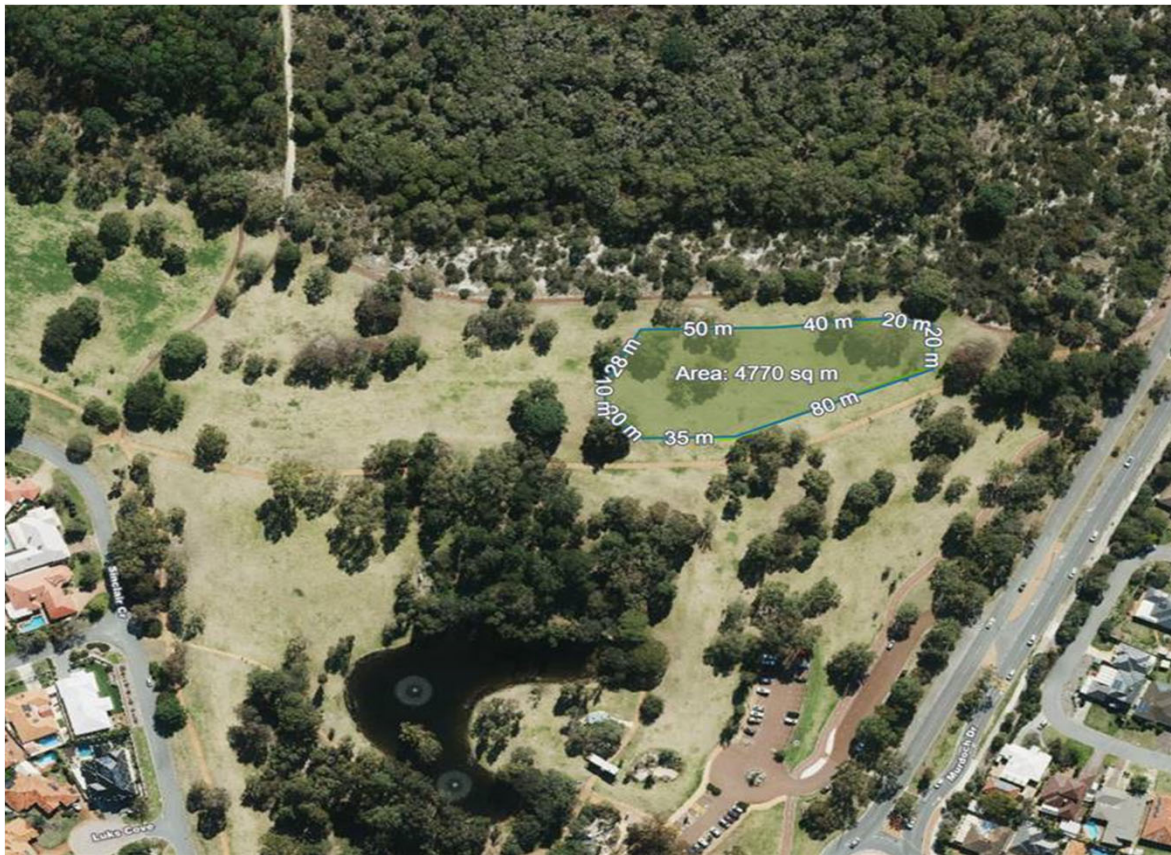
CD21/8144 Fenced Dog Play Park – Petition Response Site and Recommended Option Context

Total Off lead Area Approximately	59,000m²
Recommended Option	5,500m²
Proportion of Off Lease Area	9.5%





Alternative Option 1 – Approximately 4,800sqm



- 12% less area than recommended option
- May experience wear and tear during high use periods
- Minor reduction in functionality and available dog play space



Alternative Option 2 – Approximately 3,600sqm



- 34% less area than recommended option
- Likely to result in excessive wear and tear
- Less functionality and less available dog play space



Alternative Option 3 – Approximately 3,800sqm



- 31% less area than recommended option
- More exposed site with greater visual impact
- Located to Dog On Lead area
- Likely to result in excessive wear and tear
- Less functionality and less available dog play space



Recommended Option 5,500sqm



- Recommended option
- Designed to complement site
- Lower in landscape with less visual amenity impacts
- Adequate separation from bushland area
- Sufficient size to accommodate wear and tear



City of
Melville

CD21/8144 Fenced Dog Play Park – Petition Response Example – Fence Height

Seahaven Reserve – Rockingham (5,000sqm, 1.8 Metre Fence Height)

