

John Connell Oval Extension

Friends of Ken Hurst Park

- Legend**
- John Connell Reserve
 - John Connell Reserve
 - Leeming Bowling Club
 - Leeming Spartan Cricket Club



Leeming Spartan Cricket Club

John Connell Reserve

Dr Eddy Wajon
Convenor

Features

Ancient trees

Good quality and mis-
characterized vegetation

Weed-infested vegetation

Biodiverse flora

Cockatoo foraging habitat

Fauna: Quenda and birds



Banksia
attenuata
cone
indicating
Carnaby's
Cockatoo
foraging



Values

Banksia woodland Threatened Ecological Community

Excellent vegetation condition

Carnaby's Black Cockatoo

Threatened flora species: survey too late

Fauna corridor

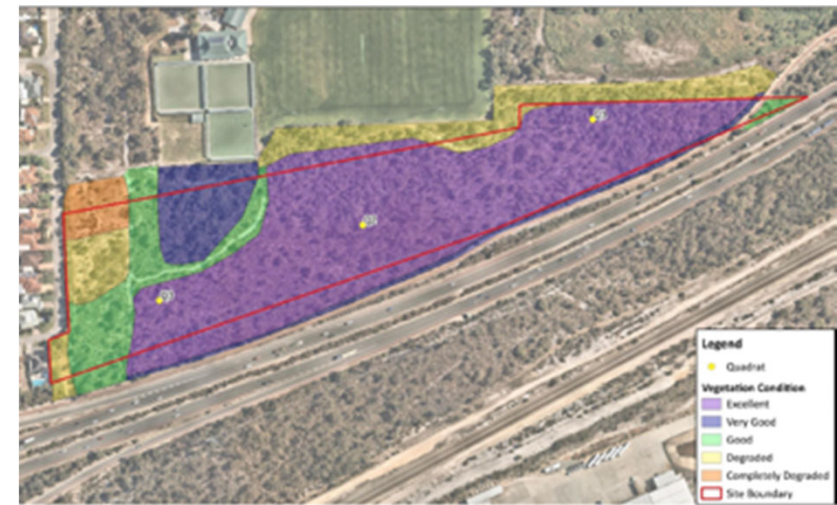


Figure 6:
Vegetation Condition and Quadrat
Locations
John Connell Reserve, Leeming

Class: Class of Shrub
Area: 1000 m²
Created by: S. Subramanian
Image Date: 10/08/2010
Photo: 10/08/10



Caladenia huegelii Grand Spider Orchid

Opportunities

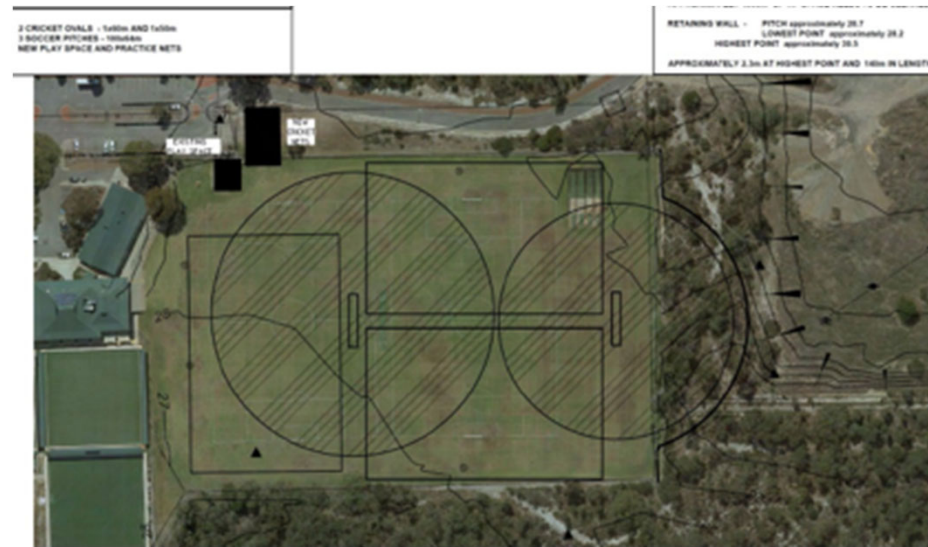
Avoid and reduce native vegetation clearing

Equalise size of cricket pitches

Place new cricket pitch on landfill area to east

Schedule games for multiple days
eg midweek,
Saturday and Sunday

Revegetate corridor



Risks

Poor planning if not done as part of John Connell Master Plan

Unsatisfactory Clearing Permit application if not undertaken by City of Melville

Damage to Threatened Ecological Community

Clearing of good quality native vegetation

Clearing of Threatened Flora

Accidental or un-necessary clearing of native vegetation

Damage to City of Melville's reputation

Damage to Sam Lim's reputation

Loss of financial support



Recommendations

Undertake planning as part of John Connell Master Plan

- not standalone

Assess alternative sizes, locations and scheduling for cricket pitches and nets

- adjacent landfill site not that inconvenient: road access available
- landfill needs to be rehabilitated anyway
- pitch on top of landfill may avoid need for expensive retaining wall

City of Melville to submit Clearing Permit if native vegetation needs to be cleared

Retain and revegetate corridor, starting with Good condition vegetation

