




Officer Presentation

UP26/101 – Proposed Scheme Amendment



City of
Melville

Background

- In 2017 Council approved temporary access over Winnacott Reserve for the development of apartment building.
 - Alchera Living then sought to purchase the land parcel for accessway use.
 - In 2021, following community engagement, Council agreed to the sale of the land to Alchera.
 - Alchera Living have since purchased the site from DPLH and it has been amalgamated with the remainder of the site.
 - The scheme amendment is a condition of sale with Department of Lands
- 



Scheme Amendment

- Application now received to change the portion of the reserve from Public Open Space to Residential R60
- The Scheme Amendment is largely administrative, with the decision to dispose of the land made previously and the transaction now complete.
- Given the administrative nature of the proposal, it is recommended that the Amendment be treated as a 'basic amendment' and be forwarded directly to the WAPC with a recommendation for adoption.
- It is noted that the accessway presents poorly to the adjoining reserve and accordingly it is recommended that Alchera Living be requested to undertake improvements to the appearance of the space.



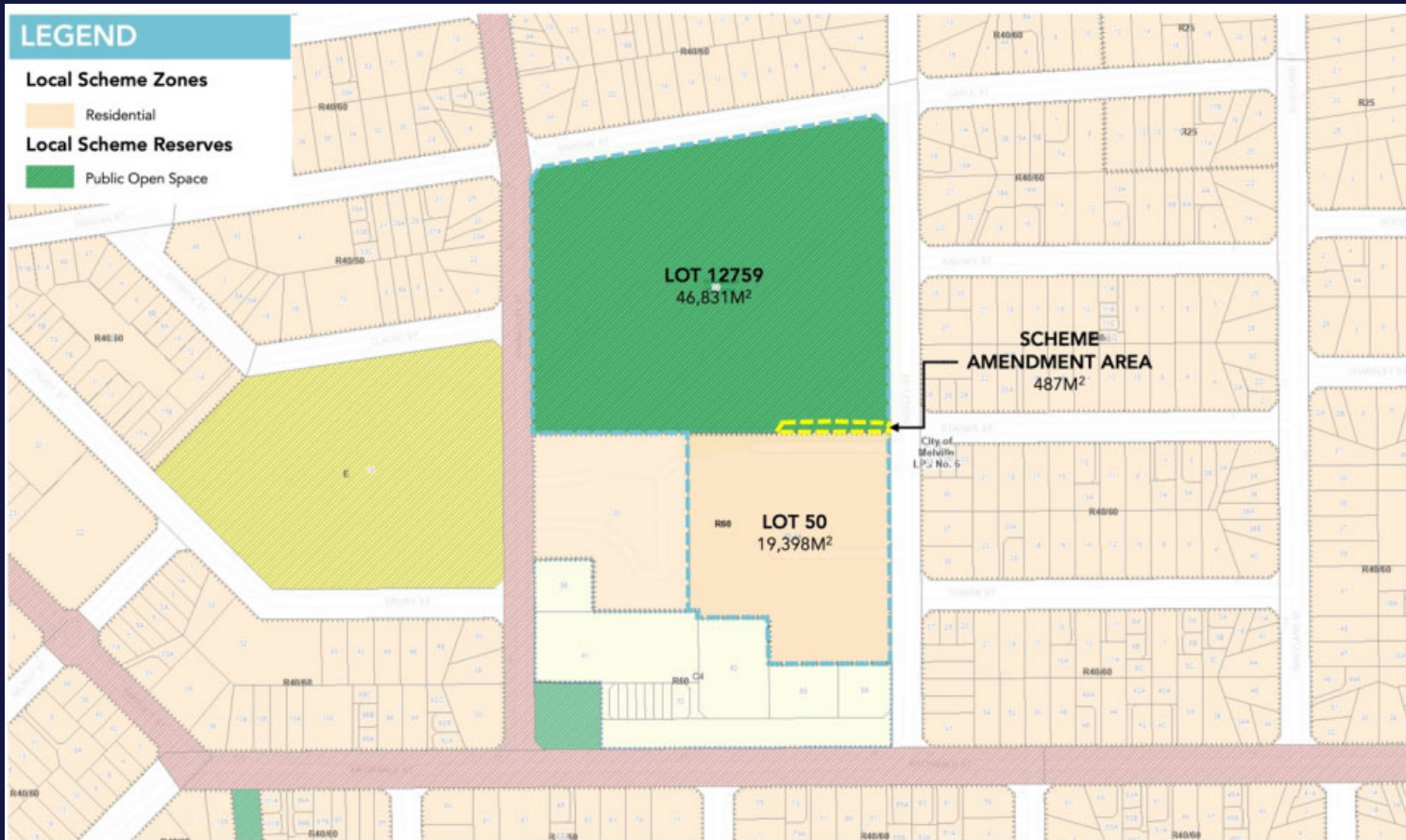
LEGEND

Local Scheme Zones

Residential

Local Scheme Reserves

Public Open Space






Recommendation

OFFICER RECOMMENDATION

That the Council:

- 1. Resolve, pursuant to Section 75 of the Planning and Development Act 2005, to adopt an amendment to the Local Planning Scheme No. 6 by: (a) (b) 2. Rezone portion of Lot 12759 (No. 33) Worley Street, Willagee from Reserve for 'Public Open Space' to 'Residential' with a density coding of 'R60'.*
 - 2. Amend the Scheme Maps accordingly.*
 - 3. Request Alchera Living to undertake improvement to the appearance of the interface between the accessway land and the adjoining reserve, particularly with regard to the standard of fencing.*
- 



Agenda Briefing Forum

February 2026



City of
Melville