

Harry Patterson Park

Park and playground options

ENGAGEMENT RESULTS STAGE 1

The City is undertaking upgrades at Harry Patterson Park in Kardinya, including renewal of the playground. To help shape the future play space, local residents were invited to share how they use the park and playground, and what improvements they would like to see included.

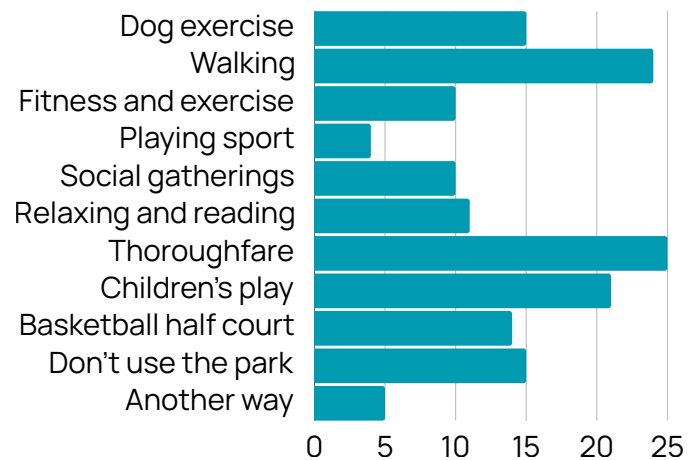
The engagement program was delivered in two stages. Stage 1 gathered community feedback to help inform future playground design concepts, while Stage 2 provided an opportunity for the community to review and vote on their preferred design option.

Stage 1 was undertaken from 11 to 25 February 2026 and promoted through direct communication with local residents and stakeholders, as well as the City's engagement webpage.



62 people told us

The most common way to use the reserve is walking and as a thoroughfare.



Reach and Participation



You told us....

Like	Dislike
<ul style="list-style-type: none"> • Large, open green space • Trees and wildlife • Quiet and peaceful atmosphere • Convenient location • Basketball court and general usability 	<ul style="list-style-type: none"> • Playground is old, boring, small, and lacking equipment • Safety and visibility issues • Lack of pathways • Shade and maintenance issues • Underutilised and poorly laid out

“LACK OF SHADE, RUNDOWN.”

“(THE PARK IS) NICE AND BIG AND OPEN.”

“THE PLAYGROUND IS OLD AND BORING.”

“THE LARGE TREES ARE WONDERFUL.”

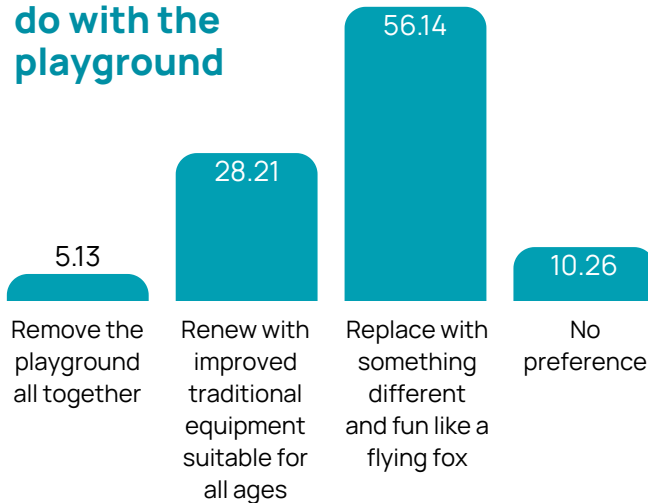


Playground

63% provided feedback about the playground area and **56%** of those who answered said they visit the playground at least once a week.



We asked what we should do with the playground



51%

preferred swing option is a basket swing with 360-degree rotation

28% want a traditional swing set with slat seat and toddler seat, 13% have no preference

51%

like a natural colour palette, that blends with the environment

33% like a colourful playground with energetic colours, 16% have no preference

77%

like the playground in its current location

46%

prefer Emma George Park, a 5min walk away

47%

love the basketball half-court

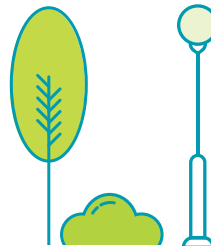
Park improvements

In addition to the playground upgrades, the City is exploring whole of park improvements.

Top five improvements

ranked in order of community preference.

1. Increase tree planting
2. Improve seating opportunities
3. Include concrete pathway from South Street to the playground
4. Keep open lawn space for open play and/or dog exercise
5. Include a small bike/scooter loop for kids



83%

always or usually feel safe walking through the park

Lack of lighting, visibility issues and after-dark behaviour are the main concerns

The community was in favour of new plantings, especially native and tall trees

Placement, safety, and level of maintenance are the main concerns

Other suggestions include creating dog-friendly spaces, installing a new pathway, increasing shade options, incorporating planting that supports local wildlife, and addressing shopping-trolley dumping.

“A REVAMP WOULD MAKE A BIG DIFFERENCE.”

“THIS SPACE IS ENTIRELY UNDERUTILISED, AND COULD BE A WONDERFUL ALL AGES SPACE.”

“MORE LIGHTING WOULD MAKE IT SAFER.”

