

# Harry Patterson Park

## Park and playground upgrades



### ENGAGEMENT RESULTS

The playground at Harry Patterson Park in Kardinya is being renewed as part of wider park upgrades. To ensure the new play space meets community needs, we invited local residents to tell us about how they use the park and playground, and what improvements they'd like in future.

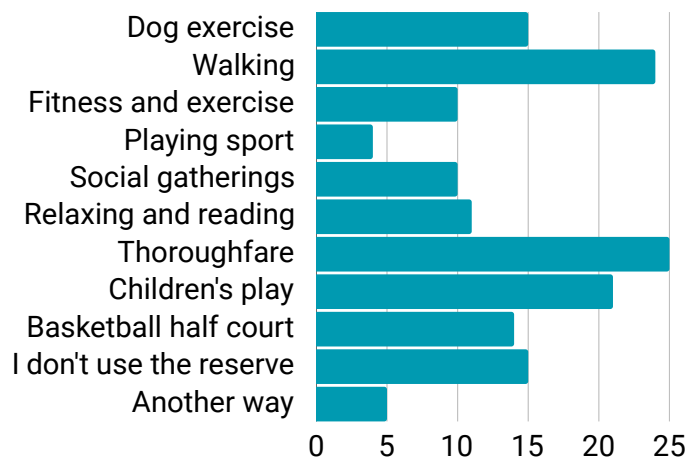
This engagement will run with two stages. The first stage will inform design options that the community will then vote on during the second stage.

The first stage of engagement was open from **11 to 25 February 2026** on the City of Melville website, with the second anticipated to run in May 2026, before planned construction in October/November 2026.



**62** people told us

The most common way to use the reserve is walking and as a thoroughfare.



### Reach and Participation

<p><b>279</b> webpage page views</p>	<p><b>462</b> emails to residents</p>	<p><b>82</b> emails to Sounding Board</p>
<p><b>6,271</b> eNews subscribers</p>	<p><b>737</b> letters to residents</p>	<p><b>74%</b> live within 500m</p>

**55%** completed the survey with family and you also told us you:

#### Like

- Large, open green space
- Trees and wildlife
- Quiet and peaceful atmosphere
- Convenient location
- Basketball court and general usability

#### Dislike

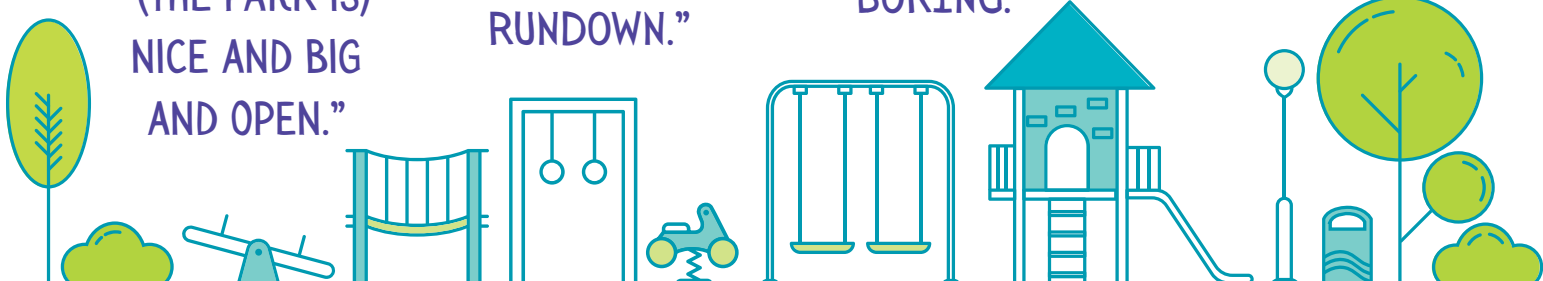
- Playground is old, boring, small, and lacking equipment
- Safety and visibility issues
- Lack of pathways
- Shade and maintenance issues
- Underutilised and poorly laid out

“(THE PARK IS) NICE AND BIG AND OPEN.”

“LACK OF SHADE, RUNDOWN.”

“THE PLAYGROUND IS OLD AND BORING.”

“THE LARGE TREES ARE WONDERFUL.”

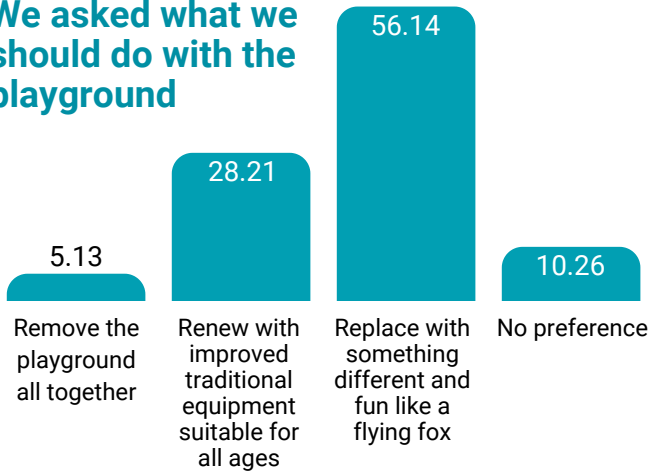


## Playground

**63%** provided feedback about the playground area and **56%** of those who answered said they visit the playground at least once a week.



### We asked what we should do with the playground



**51%**

preferred swing option is a basket swing with 360-degree rotation

28% want a traditional swing set with slat seat and toddler seat, 13% have no preference

**51%**

like a natural colour palette, that blends with the environment

33% like a colourful playground with energetic colours, 16% have no preference

**77%**

like the playground in its current location

**46%**

prefer Emma George Park, a 5min walk away

**47%**

love the basketball half-court

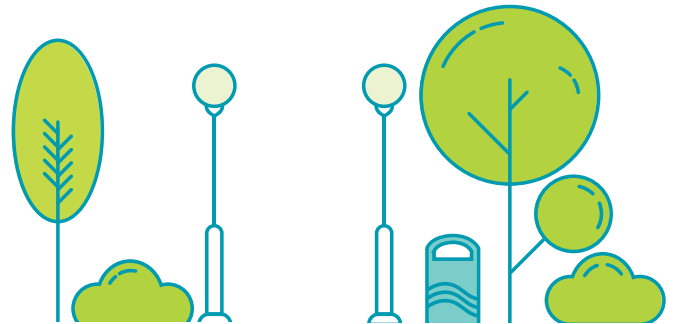
## Whole of park improvements

In addition to the playground upgrades, the City is exploring whole of park improvements.

### Top five improvements

ranked in order of community preference.

1. Increase tree planting
2. Improve seating opportunities
3. Include concrete pathway from South Street to the playground
4. Keep open lawn space for open play and/or dog exercise
5. Include a small bike/scooter loop for kids



**83%**

always or usually feel safe walking through the park

Lack of lighting, visibility issues and after-dark behaviour are the main concerns

The community was in favour of new plantings, especially native and tall trees

Placement, safety, and level of maintenance are the main concerns

Other suggestions include creating dog-friendly spaces, installing a new pathway, increasing shade options, incorporating planting that supports local wildlife, and addressing shopping-trolley dumping.

“A REVAMP WOULD MAKE A BIG DIFFERENCE.”

“THIS SPACE IS ENTIRELY UNDERUTILISED, AND COULD BE A WONDERFUL ALL AGES SPACE.”

“MORE LIGHTING WOULD MAKE IT SAFER.”

