

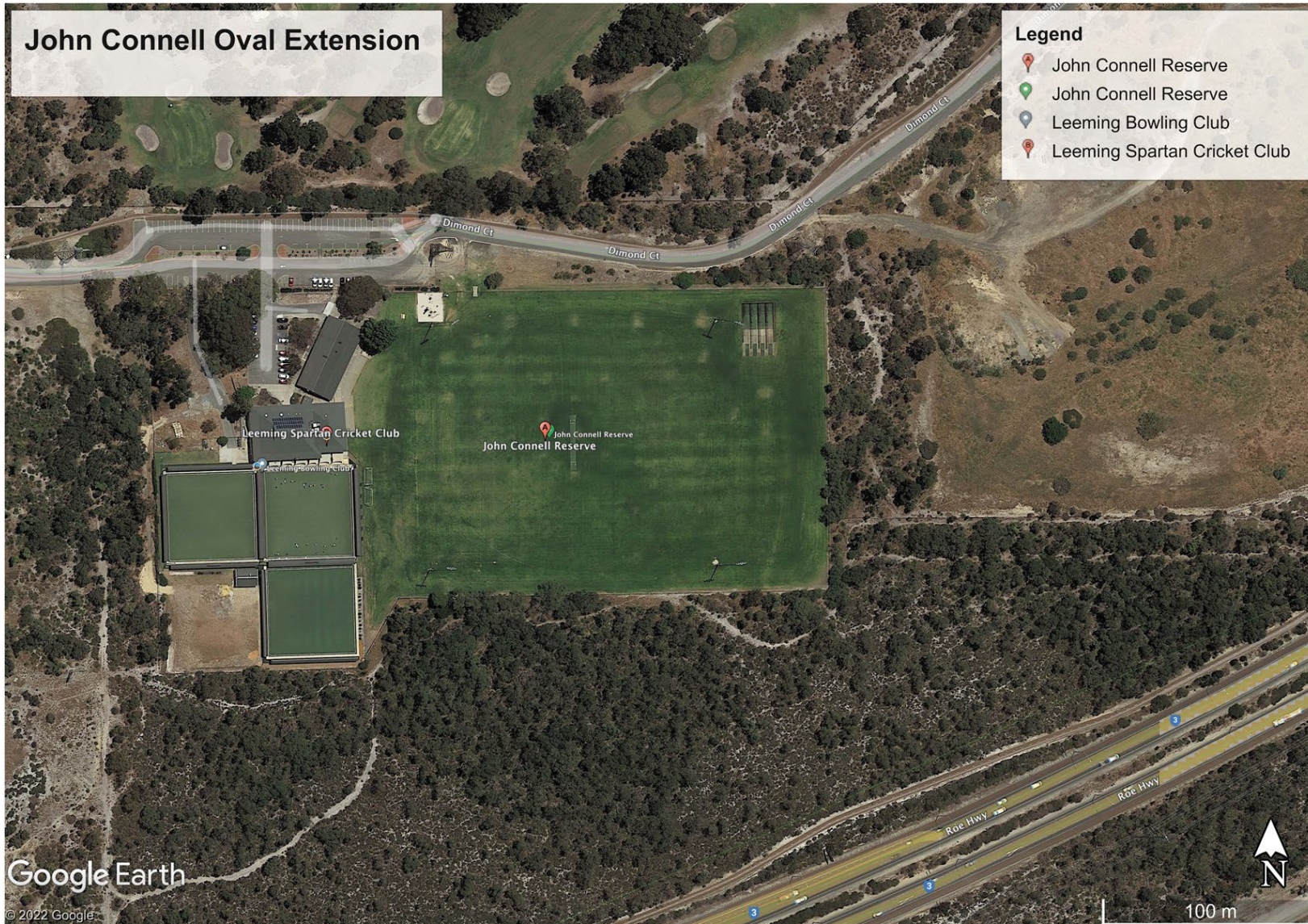


Deputation

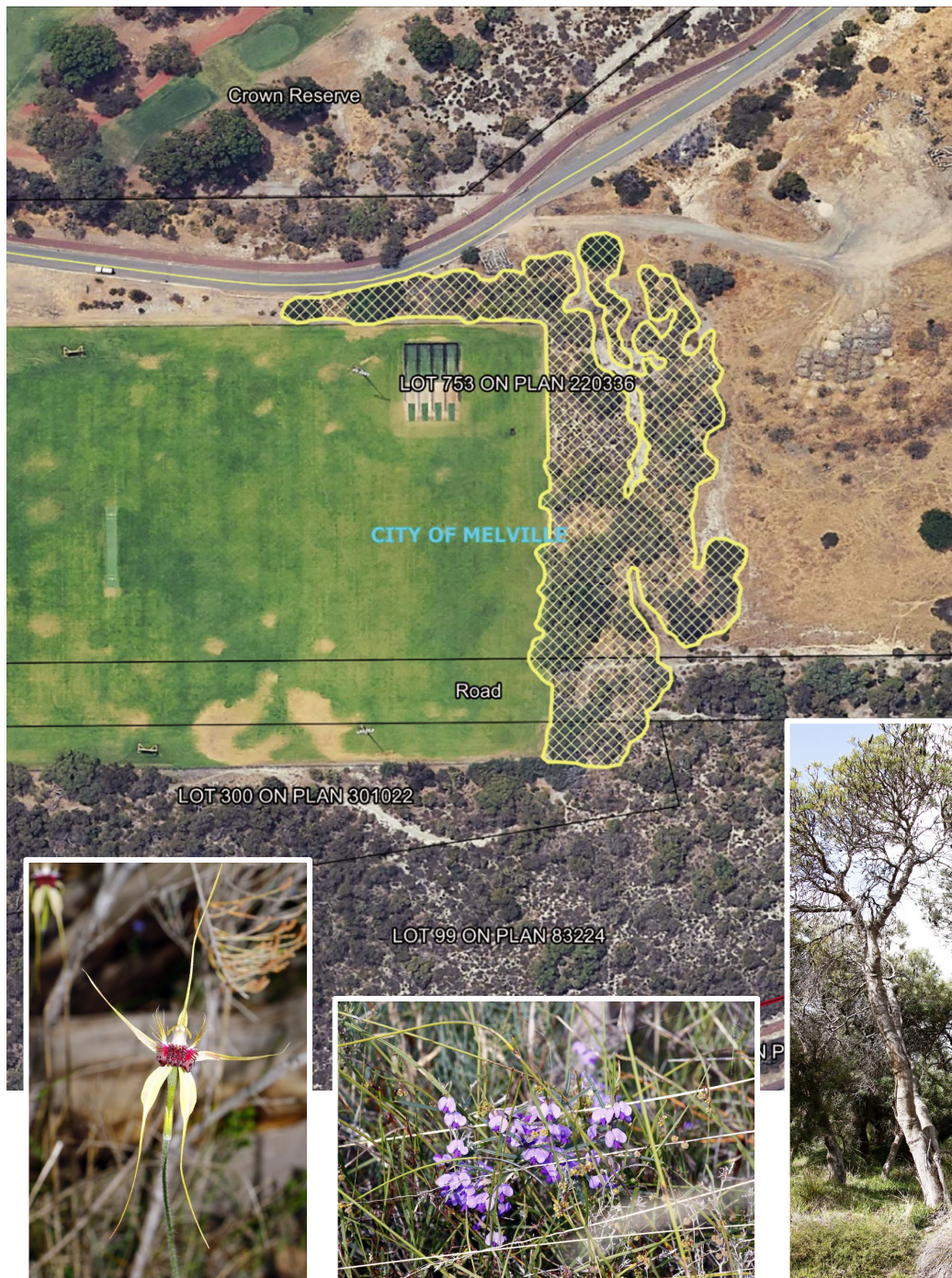
Dr E Wajon (Friends of Ken Hurst Park)



City of
Melville



Dr Eddy Wajon
Convenor, Friends of Ken Hurst Park



Area to be cleared: 0.68ha
 Number of Banksia trees to be cleared: approx. 100
 Age of Banksia trees: up to 70yrs old
 Carnaby's Cockatoo use: eaten Bankia cones seen
 Number of Threatened Grand Spider Orchids potentially affected: 20



Offset in Ken Hurst Park for proposed clearing



- Revegetation of bare areas (green areas): 1.63ha
- Improvement and management of open native vegetation (green and red areas) : 7.34ha
- Potential future offset (banking) (blue area): additional 3.28ha

Ken Hurst Park offset revegetation proposal

DWER required completion criteria after 4 years:

- Number of plants: 10,000/year for 3 years
- Survival: at least 70 per cent of the seedlings planted
- Species richness: > 40 native species
- Species density: 4 native plants per square metre
- Weeds: < 5% coverage
- Condition: from Very Degraded or Good to Very Good or Excellent

Friends of Ken Hurst Park revegetation

Friends of Ken Hurst Park success

- Number of plants: 300/year for 20 years
- Survival: 0-30% of the tubestock planted
- Species richness: 15 native species
- Species density: 1 native plant per 2-5 square metres

High plant survival depends on

- Sufficient soil moisture: rainfall, artificial watering
- Water/moisture penetration through water-repellent soil and compacted layer
- Good quality seedlings with excellent root architecture



Friends of KHP revegetation best management

Practice

- Apply SenTree browsing deterrent to tubestock
- Auger plant holes and erect plant guards
- Fertilise tubestock at planting
- Install irrigation pipework to reach plants
- Water with team of 4-10 volunteers
- Water 4-10L/plant using wands/spears/hoses from 1000L water tanker
- Water every 2 weeks September-April

Issues

- Need water tank/s with pump, hoses and wands
- Very time consuming / demanding on personnel
- Uses a lot of water and water distant from site
- Additional expense for infrastructure
- Very little if any improvement in plant survival



Proposed revegetation offset management

Practice

- Rip and/or scarify soil
- Plant 10,000 tubestock and broadcast seed
- Water once with 1L/plant when plants stressed
- Replace dead plants with 10,000 infill plants/yr

Issues

- Tubestock suppliers have never been able to supply 40 different species for planting in Ken Hurst Park
- Likely low survival: < 30% of tubestock
- When/how often and what criteria will be used to determine plant stress
- 1L water/plant once will not save any plants
- How will 1L water/plant be delivered to stressed plants
- 1L water/plant requires 10 x 1000L water tanks
- Uses a very large amount of water and water distant from site
- Potential large additional expense for infrastructure if watering
- Significant trampling damage if visiting site frequently to water

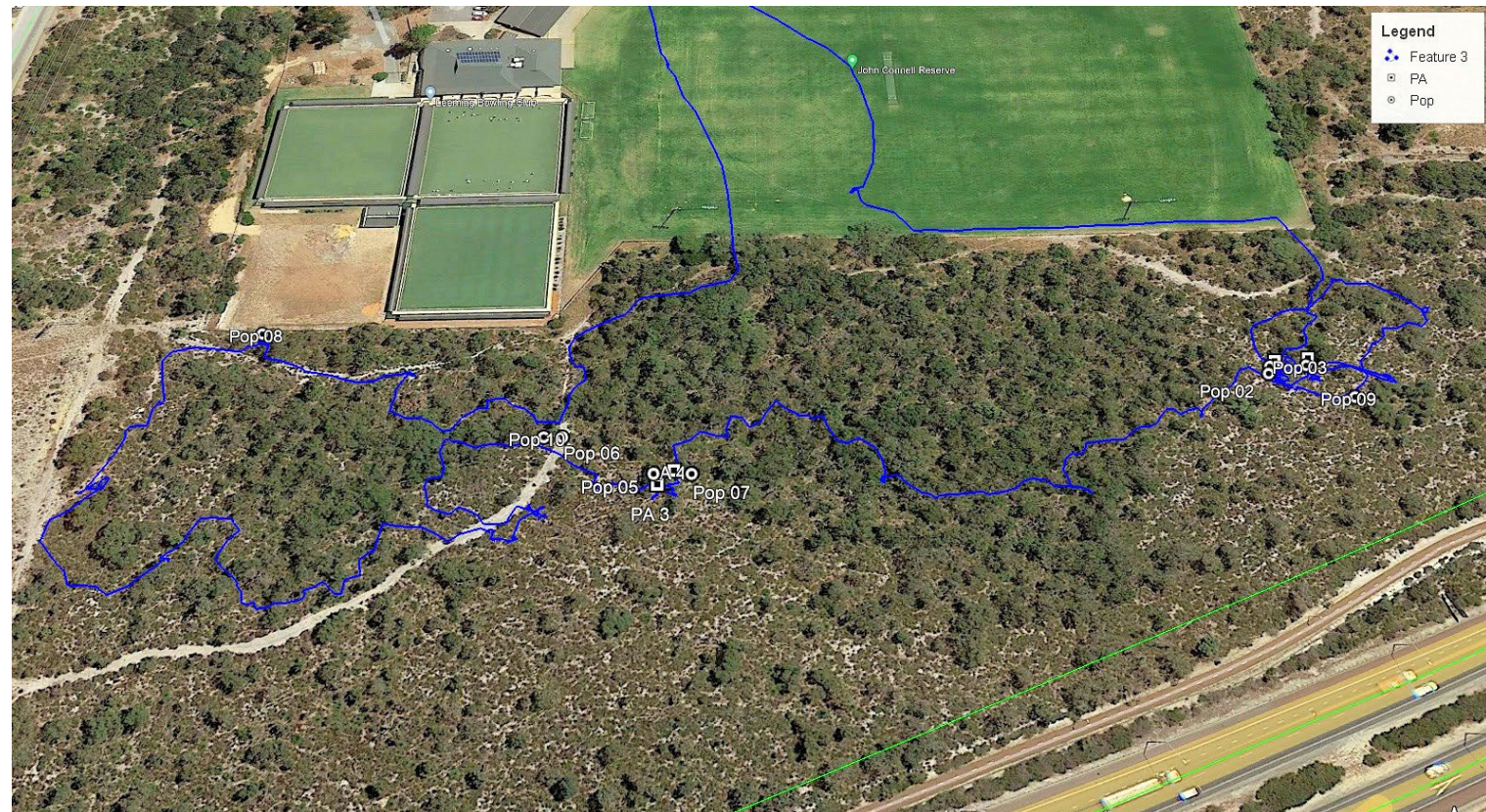


Conclusions

Revegetation of Ken Hurst Park would be a welcome, fantastic future outcome for biodiversity, bushland condition and tree canopy but would take a long time to achieve

Clearing 0.68ha of Banksia woodland TEC would result in an immediate loss of a large number of mature trees used by threatened Cockatoos

High chance of adversely impacting threatened Grand Spider Orchid during clearing and construction.



Conclusions

DWER's success criteria have not been met by the Friends of Ken Hurst Park in more than 20 years of volunteer planting

There is a high chance of not meeting DWER's success criteria in revegetating 1.63 – 7.24ha of Ken Hurst Park under the current proposal

Supplying 1L water/plant once as proposed would not ensure its survival

It would be very difficult, expensive, time and labour intensive to supply 1L of water once

- let alone supply adequate water as and when required to all plants, to ensure their survival



Conclusions

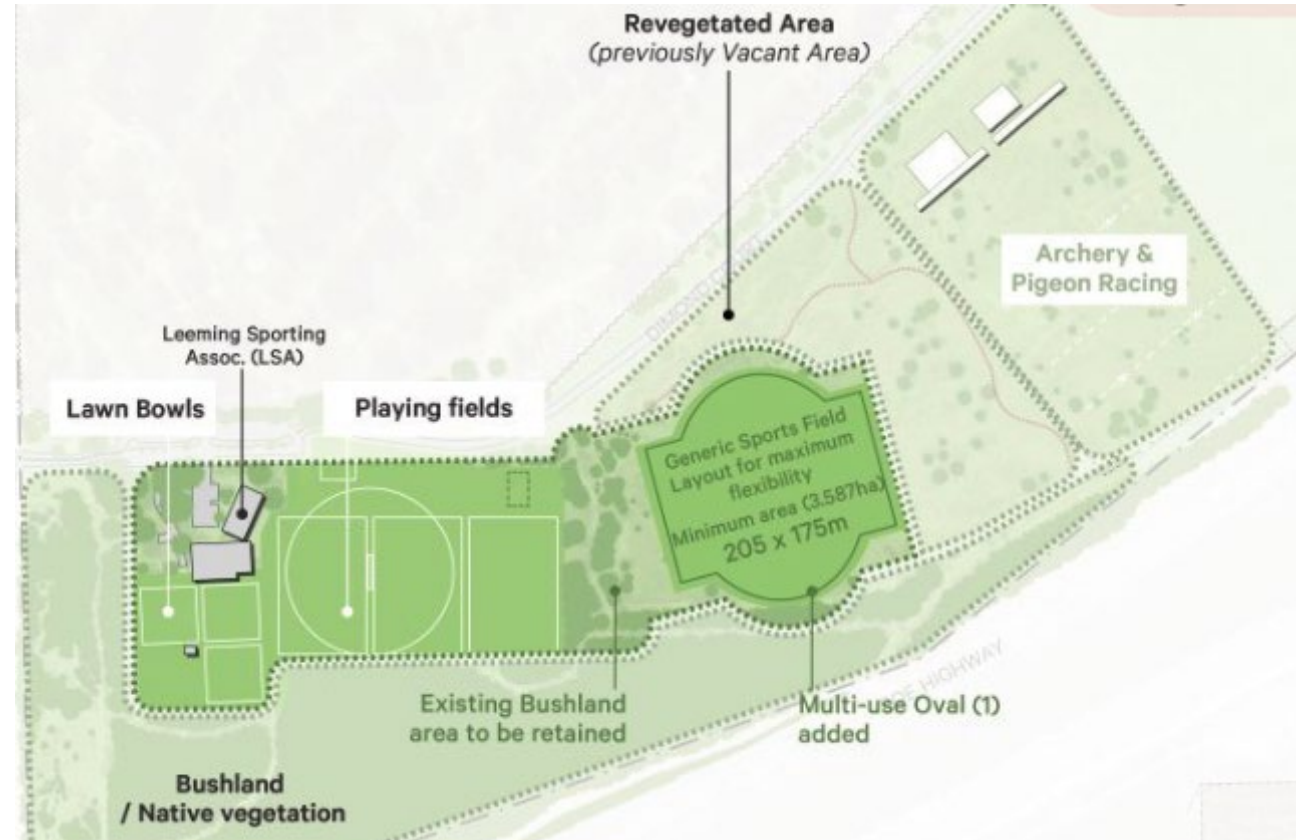
Every effort should be made to eliminate clearing any bushland to avoid need for offset

Options to avoid clearing bushland for the desired playing fields include the following:

- re-organising the layout of the existing cricket pitches, especially the practice nets
- put the extra facilities on top of the John Connell landfill to the east

The area between the existing playing fields and the landfill tip face should be revegetated

- to create a vegetated corridor between Roe Highway Road Reserve and Melville Glades golf course



I wish you every success in making the best and correct decision.