



Department of
Transport

LONG TERM CYCLE NETWORK

FOR COUNCIL CONSIDERATION AND ENDORSEMENT

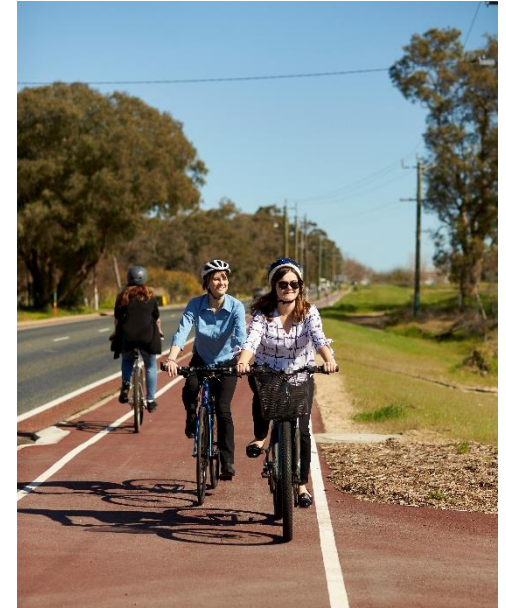
Matthew Root

Long Term Cycle Network Coordinator

Email: matthew.root@transport.wa.gov.au



ALL AGES & ABILITIES BICYCLE NETWORK



PROJECT OVERVIEW

- Long Term Cycle Network (LTCN)
- Consultation with 33 LGAs across Perth and Peel
- To agree a long term aspirational bicycle network for the region
- To provide a network of safe and attractive bicycle routes:
 - Provide continuous routes along major corridors
 - Establish links between activity centres and public transport services
 - Provide connections to schools, education sites and local centres



PROJECT HISTORY

- *Cycling Network Plan* part of *Transport @3.5M*.
- No consultation with LGAs.



- Jul 2018 LTCN project begins.
- Project planning & initial engagement with LGAs.



- Council Endorsement of final draft LTCN.
- LGAs with endorsed LTCN eligible for WABN grant funding.

2016

2017

2018

2019

2020



- Change in State Government.
- LTCN project with extensive LGA consultation proposed & funded.

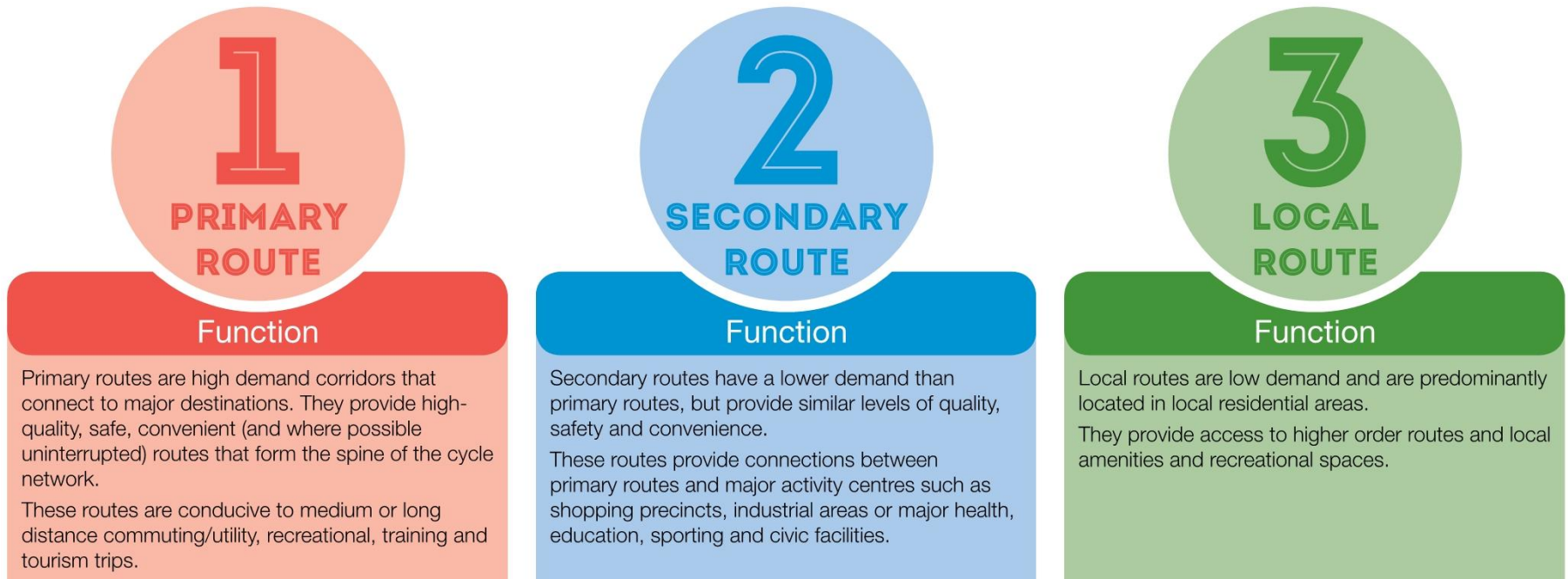


- Detailed engagement with LGA officers.
- State agency review of draft LTCN agreed with each LGA.



LONG TERM CYCLE NETWORK

- 2 year project – July 2018 to June 2020
- DoT and LGA officers have worked together to develop the LTCN
- Routes have been categorised based on their function



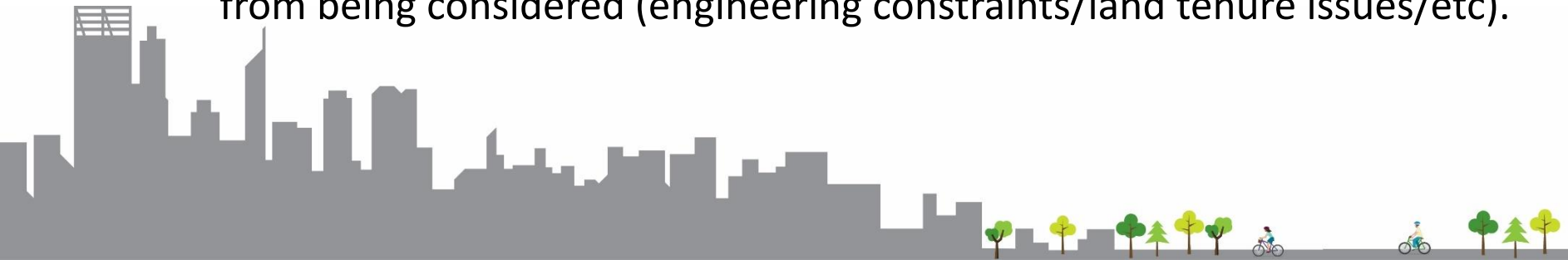
WHY IS THE LTCN IMPORTANT?

- An endorsed LTCN across the Perth and Peel region can **assist in leveraging additional funding for bicycle infrastructure**:
 - Assist State Government in Federal funding applications
 - Assist DoT leverage additional State funding for bicycle infrastructure
- An endorsed LTCN across the Perth and Peel region will **assist with planning of the bicycle network and routes**:
 - Assist State agencies such as Main Roads/PTA/Metronet
 - Assist LGAs with network planning, cross boundary connectivity and bicycle route prioritisation.



HOW WILL THE LTCN BE UPDATED?

- DoT will be updating guidance for LGAs to develop bicycle plans
- It is expected the guidance will require LGAs to review the endorsed LTCN as part developing/updating bicycle plans.
- LGAs typically review bicycle plans every 5 years
- LGAs conduct public consultation when reviewing bicycle plans
- As part of the bicycle plan review LGAs and DoT can work together to modify the endorsed LTCN:
 - Routes can be added to reflect land use changes/new development
 - Routes can be realigned if details are known which excludes a corridor from being considered (engineering constraints/land tenure issues/etc).



WHY SEEK COUNCIL ENDORSEMENT?

- DoT is seeking the aspirational LTCN to be endorsed by Council (Elected Members) across 33 LGAs in Perth and Peel.
- Council endorsement is necessary to demonstrate region wide agreement of the LTCN – which will assist in leveraging funding.
- From July 2020 all WABN grants for Perth and Peel LGAs will be linked to the endorsed aspirational LTCN:
 - Only routes within the endorsed LTCN will be eligible for grants
 - Only LGAs with an endorsed LTCN will remain eligible for grants



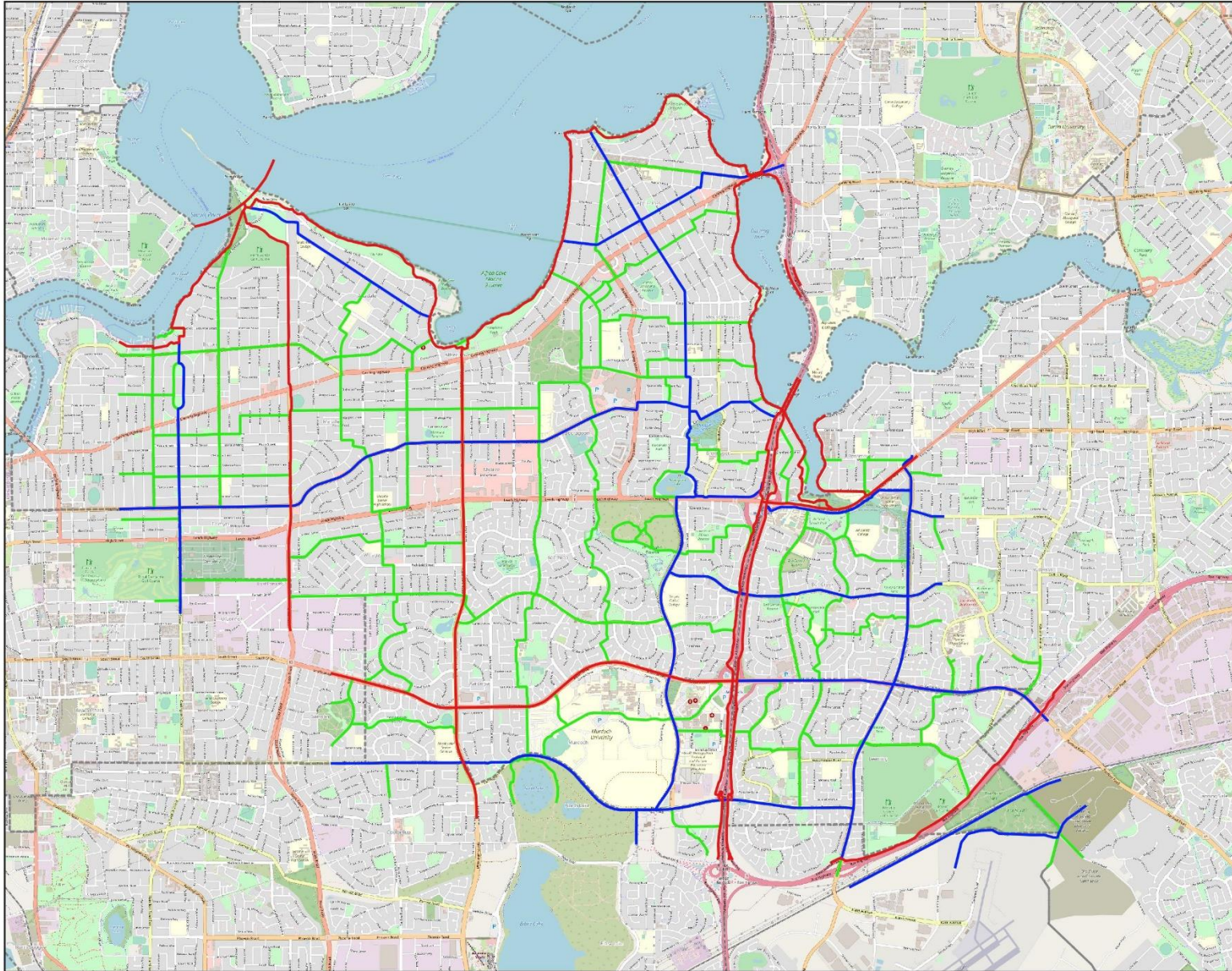
COUNCIL ENDORSEMENT

- DoT is seeking Council (Elected Members) to endorse/adopt the aspirational LTCN agreed with LGA officers based on the following statement:

‘Council endorse/adopt the aspirational Long Term Cycle Network (LTCN) developed in collaboration between Council officers and the Department of Transport. Endorsement of the LTCN does not commit Council nor State Government agencies to deliver all, or any part, of the LTCN within a particular timeframe – nor does endorsement commit any party(s) to fund any specific route within the LTCN.

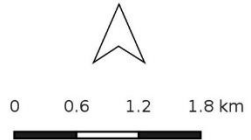
Council endorsement confirms support for local and State Government agencies to work together in delivering the aspirational LTCN over the longer term.’





Legend

- Primary Route
- Secondary Route
- Local Route



DISCLAIMER:
This plan has been produced by the Local Government Authority displayed in the top left hand corner.
This plan is confidential and has been produced for discussion purposes only between the Local Government Authority and Department of Transport.
This plan does not necessarily represent the view of the Local Government Authority or the Department of Transport.



Department of
Transport

QUESTIONS?

Matthew Root

Long Term Cycle Network Coordinator

Email: matthew.root@transport.wa.gov.au

