



# Webber Reserve Master Plan

REPORT

April 2022



City of  
**Melville**

# Contents

Acknowledgement to Country	3
Vision	4
Principles	4
Introduction	5
History	7
Willagee Community Profile	8
Strategic influences	9
Strategic Community Plan (2020 – 2030)	9
Corporate Business Plan (2020 – 2024)	9
Active Reserve Infrastructure Strategy (2020)	11
Public Spaces Strategy (2017)	11
Community engagement	12
Purpose	12
Methods	12
Existing Site Conditions & Opportunities	13
Webber Reserve Master Plan	17
Webber Reserve North East Recreation Concept (Play Detail)	18
Webber Reserve Master Plan – View 1 – Clubhouse Perspective	19
Webber Reserve Master Plan – View 2 – Courts Perspective	20
Webber Reserve Master Plan – View 3 – Play Perspective	21
Conclusion	22
Implementation	22
Appendices	23



## Acknowledgement to Country

The City of Melville acknowledges the Bibbulmun people as the Traditional Owners of the land on which the City stands today and pays its respects to the Whadjuk people, and Elders both past and present.

An Acknowledgement of Country, or Acknowledgement of Traditional Owners, is a way that all people, both Aboriginal or non-Aboriginal, can show respect for Whadjuk/Noongar heritage and the ongoing relationship of traditional owners with the land.

## Nyungar Statement

Kaya Kaya Kaya Nyungars are djurupiny to Wanginjy noonuk on gnulla Boodja Nyungar koori Ngyitting Yeye Boorda-Boorda nitja Whadjuk Boodja nitja Bilya Boodja Midgegooroo Moort n Moorditj Wirin koorlinjy Wanginjy djinoong bulup koori burda-burda on Derbarl Yerrigan n Beeliar Boodja.

Whadjuk Elder Uncle Neville Collard

Nyungar Birdiyia



## Vision

To secure the future of Webber Reserve in the vibrant and growing suburb of Willagee through a considered approach to improved accessibility, connectivity and activation of this highly valued park land.

## Principles



### Sustainable Open Space

- Improve the environmental and landscape values of the reserve and enhance Melville's Urban Forest.
- Continue to proactively manage storm water and drainage on site.
- Environmentally sustainable design.
- Efficient investment into infrastructure tailored to the size and function of Webber Reserve.



### Connected Communities

- Provide opportunities to activate the reserve for increased sport, recreation and leisure activities for all abilities.
- Improve accessibility and inclusiveness for all abilities through contemporary infrastructure.
- Establish cultural recognition through interpretation and art.
- Improve the network of shared use pathways and links to neighbouring retail precincts.
- Introduce open space technologies to support reserve use.



### Healthy Lifestyles

- Revitalise ageing infrastructure to;
  - i. Provide a contemporary, safe and inviting space that removes barriers to participation in physical activity and enables enhanced health and wellbeing through outdoor activity.
  - ii. Provide a place that encourages social connection.



### Safety

- Improve safety and the perception of safety by following Crime Prevention through Environmental Design (CPTED) principles.



### Partnerships

- Ensure any further development allows the City to partner with and align to known opportunities for external grant funding to offset the cost of development to the City and therefore, community.

# Introduction

Webber Reserve is an irregular shaped sport and recreation space located in the City's west in the suburb of Willagee and is a total 4.72 hectares in area.

Webber Reserve is located approximately 17 kilometres from Perth's CBD and situated near the intersection of two primary distributor roads in Leach Highway and Stock Road and as such has excellent road and public transport access. The reserve is also adjacent to two local retail precincts.

The reserve is owned by the State of Western Australia and managed by the City of Melville for the purpose of recreation. It provides for a diverse range of sport, recreation and leisure opportunities for residents, local business employees and visitors from neighbouring suburbs and local government authorities. Webber Reserve also serves to manage stormwater locally via the compensation basin located in the North West corner of the reserve and underground drainage infrastructure.

Webber Reserve is home to the Willagee Bears Rugby League Football Club, made up of both male and female teams and who also provide a social darts club targeting an older demographic. The club continues to support cultural diversity through association with Rugby League Samoa WA. Webber Reserve is also a secondary sport space for the Bicton Junior Cricket Club (summer season) and Winnacott Junior Football Club (pre-winter season), noting there is no primary summer season user, with ample capacity to facilitate this. The reserve is highly valued for informal recreation and leisure including but not limited to dog exercise, walking/running, playground use, basketball, riding and BBQ's.



Image: Clubroom mural by artist Liam Dee

During the development of the City of Melville's Active Reserve Infrastructure Strategy (ARIS) in 2020, the City of Melville's change room renewal program, through the Infrastructure Strategy, saw the refurbishment and extension to the existing Webber Reserve clubroom and change room facilities that are located in the southern portion of the reserve. This project helped ensure that contemporary, functional and unisex facilities were made available to reserve users, however did not resolve and number of other matters to be addressed on site.

Additionally the new floodlighting infrastructure identified by ARIS for construction in 2021/2022 was brought forward to 2020/2021 as a part of the COVID-19 stimulus package. ARIS recognised that an outcome for Webber Reserve was to have the majority of the sport space lit for night training to facilitate greater usage on the reserve; this lighting project was complete January 2022. The project budget of \$398,408 has been entirely funded through the Local Roads and Community Infrastructure Program (Department of Infrastructure, Transport, Regional Development and Communications).

The completed ARIS (2020) has identified that there are opportunities to increase use and capacity of the reserve, though these opportunities are compromised due to a number of ad hoc and ageing developments which have occurred over time.

More effective and efficient use of the reserve can be achieved through the development of a site Master Plan.

To arrive at this recommendation the ARIS assessed the following:

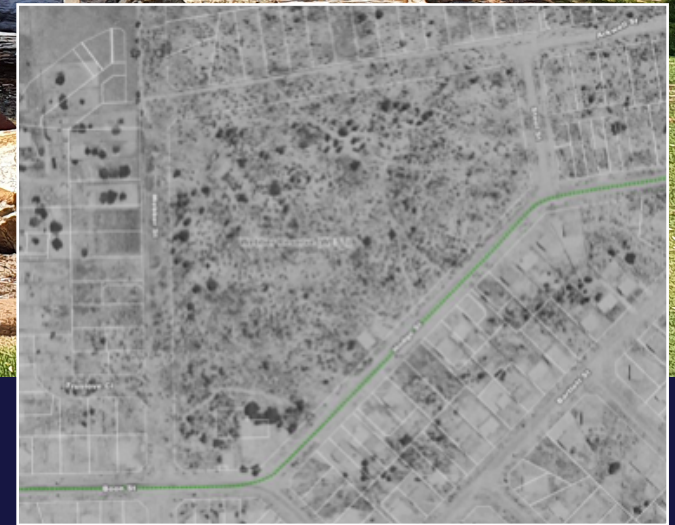
- Demographics
- Trends in sport
- Passive recreation requirements
- Equality of access
- Active reserve catchments
- Existing infrastructure
- Community feedback
- Club feedback
- City of Melville strategies, policy and plans
- State and national sport related strategies, plans and guidelines

The Master Plan will document the vision for further developments of Webber Reserve and provide a coherent planning framework for future projects. Given the ARIS is a recent document, the information contained is considered as relevant for the purposes of this Master Plan.

A summary of ARIS recommendations for Webber Reserve are as follows:

- Master planning the reserve in 2020/2021
- New floodlighting in 2021/2022
- Additional parking in 2022/2023, which will be incorporated into the Master Plan;
- Implementation of the Master Plan (see 'Implementation' on page 22)





## History

Webber Reserve, as it is known today, is named after the abutting road to the West, Webber Street, which reportedly took its name from a member of the crew of HMS Success which was in Fremantle from 1 March 1827 to 30 April 1827. The City acknowledges that Webber Reserve is on Whadjuk land. Local Indigenous Elder, Uncle Neville Collard tells us the land was a natural drainage point for the surrounding hills, where Emu would frequent and were subsequently hunted. Much like the surrounding suburb of Willagee, red ochre was also found in abundance in this area. Since its development into a sport and recreation space in 1965, where cricket was the first sport

played at Webber Reserve, there have been a variety of sports played including cricket, baseball, tennis and Rugby League, which is the predominant sport played there today.

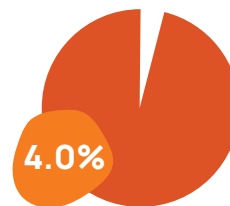
In 2014 the Friends of Webber Reserve was successful in its bid for grant funding to construct a Nature play space through the City of Melville's participatory budgeting program Project Robin Hood, the project was also partially funded by Alinta Gas and supported by a range of local businesses. Children of the local Caralee Community School created tiles that are installed within the play space.

# WILLAGEE COMMUNITY PROFILE

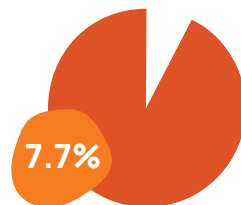
The ARIS identifies Willagee, the suburb where Webber Reserve is located, as a suburb of growth across all age ranges, leading in part to the justification for master planning the reserve as a high priority. Furthermore, the suburb of Willagee was identified in the ARIS (Household Income and Employment Implications) as having a high level of disengaged youth, as compared with the remainder of the City of Melville, further justifying planning and investment to engage this demographic as a high priority. An increase in young family units also informs the master plan in terms of ensuring a variety of facilities/infrastructure/activities are considered for this cohort. Key demographic characteristics for Willagee are as follows:

THE TOTAL POPULATION  
OF WILLAGEE WAS

**5,146**  
IN 2020



4.0%  
OF THE POPULATION IDENTIFY  
AS ABORIGINAL & TORRES  
STRAIGHT ISLANDER  
(0.7% AVERAGE IN THE  
CITY OF MELVILLE.)



7.7%  
OF PEOPLE IN NEED OF ASSISTANCE  
DUE TO DIASBILITY  
(4.0% AVERAGE IN THE  
CITY OF MELVILLE.)



Willagee will experience a medium to high population growth during the 20 year period, with the main population influences being a combination of inward migration and births.



Overall, the suburb will see population growth across all age ranges at a relatively consistent level throughout the 20 year period.



A growing number of young family units will need to be provided for. In particular, growth in the 5 to 49 age range indicates organised club based sport and recreation activities are likely to be in high demand.



Willagee has the highest percentage of low income households in the City of Melville at 25% which gives an indication of the need to access low cost and local sport, recreation and leisure activities.

# Strategic Influences

## STRATEGIC COMMUNITY PLAN (2020 – 2030)

The Strategic Community Plan is a long-term overarching document that sets out our community's vision and aspirations for the future. It also sets out the key strategies and actions required to achieve these aspirations. As the fundamental strategic framework for the City's current and future planning, the focus is on 6 key aspirations, to which the Master plan aligns strongly:

1. **Clean and Green:** clean and well-maintained parks, reserves, natural areas and public open spaces where everyone can socialise, be active and be safe.
2. **Growth and Prosperity:** encourage development of small businesses in our suburbs and local communities.
3. **Healthy Lifestyles:** opportunities for healthy activities, both indoors and out and about in local parks and suburbs; walking, running, cycling and exercising individually or in groups.
4. **Safe and Secure:** people feel safe and secure at all times wherever they are and whatever they are doing.
5. **Sense of Community:** a range of local community services, events and cultural activities throughout the year for people to get to know one another and do things together.
6. **Sustainable and Connected Transport:** better public transport, cycling and walking infrastructure and responsive traffic management.



## CORPORATE BUSINESS PLAN (2020 – 2024)

The Corporate Business Plan outlines the strategic direction for the organisation for the next four years and includes Council's continued focus on the City of Melville's Vision and Mission, which are as follows:



### OUR VISION

"ENGAGING WITH OUR DIVERSE COMMUNITY TO ACHIEVE AN INCLUSIVE, VIBRANT AND SUSTAINABLE FUTURE."



### OUR MISSION

TO PROVIDE GOOD GOVERNANCE AND QUALITY SERVICES FOR THE CITY OF MELVILLE COMMUNITY.

The Master Plan most closely aligns to the following priorities and key strategies to achieve them:

### Priority 1 – Ensure the improvement and sustainability of our environment.

#### ► Strategy 1. Protect and improve our natural assets to enhance our environment.

Master Plan outcome;

- Retain existing trees.
- Increase tree plantings enabling succession and a greater canopy.
- Increase native shrubs and ground covers.

### Priority 2 – Improve the approach for diverse and sustainable urban development and infrastructure.

#### ► Strategy 1. Implement innovative, efficient and appropriate initiatives that support community centred infrastructure within integrated transport solutions.

Master Plan outcome;

- Responding to trends in community recreation infrastructure by providing a pump track, skate avenue and multi-use games court.

#### ► Strategy 2. Enhance amenity and vibrancy through placemaking and creating well designed and attractive public spaces.

Master Plan outcome;

- Strengthen the connection between people and the places they share through collaboration.
- Renewed recreation spaces throughout the reserve improving the quality of the space and places within.

### Priority 3 – Empower the voices of our diverse community by strengthening engagement.

#### ► Strategy 1. Increase co-design approaches that engage stakeholders in upfront designs and support issue resolution activities.

Master Plan outcome;

- Stakeholders joined the design process, with multiple and varied engagement opportunities from start to finish delivering community satisfaction.

#### ► Strategy 2. Improve the mechanisms to make information flow easier to access and share, including optimising digital communications.

Master Plan outcome;

- A diversity of mechanisms was offered to maximize the opportunities for, and accessibility of, the engagement.
- Several digital communication initiatives were implemented.

### Priority 4 – Support healthy lifestyles and wellbeing.

#### ► Strategy 1. Invest strategically in local infrastructure and built environments that support physical activity and healthy lifestyles.

Master Plan outcome;

- The Master Plan is a recommendation from the Active Reserve Infrastructure Strategy (2020) which was developed to guide the provision of infrastructure on Active Reserves to 2040.

#### ► Strategy 3. Empower inclusive participation and support for sports and community groups.

Master Plan outcome;

- Inclusive recreation infrastructure is a priority of the Master Plan to reduce barriers to participation for all.
- Although sport use has been well supported at Webber Reserve by infrastructure improvements in 2020 and 2021, supporting infrastructure has been documented in the Master Plan to assist club and community use into the future.

### Priority 5 – Ensure long term financial sustainability.

#### ► Strategy 1. Undertake efficiency improvements to maximize cost effectiveness

Master Plan outcome;

- Documenting the vision for future developments at Webber Reserve, by providing an implementation plan and cost plan, increases the efficiency of any project and limits the likelihood of 'ad hoc' investment. A planned approach also enables a higher probability of securing grant funding to offset cost.

### Priority 6 – Encourage local economic development.

#### ► Strategy 1. Encourage opportunities for increased private sector commercial and residential development in strategic locations.

Master Plan outcome;

- Webber Reserve neighbours two small retail precincts and with planned connections and improved public amenity, the Master Plan may support these businesses in flourishing.

## ACTIVE RESERVE INFRASTRUCTURE STRATEGY (2020)

The Active Reserve Infrastructure Strategy (ARIS) has been developed to guide the provision of infrastructure on Active Reserves for the next 20 years. Active Reserves are principally those reserves within the City which provide for formal community-level sport and associated recreational uses. While they are used for community sport they also provide a variety of other recreational activities for the local communities they serve.

The Master Plan was a recommendation contained within the ARIS, site specific recommendations for Webber Reserve are contained on page 98 of the ARIS. Applicable Principles of Development from the ARIS (page 88) have also been applied to the Master Plan to ensure a consistent City-wide approach.



## PUBLIC SPACES STRATEGY (2017)

The Public Spaces Strategy provides a clear strategic direction and informs future decision-making on the best ways to improve public spaces in the City of Melville.

The strategy recommends that the City prioritise improving the quality, amenity, safety, accessibility, useability and sustainability of public spaces. It also provides direction that the City will continue to implement the recommendations made in the Strategic Provision of Active Reserves 2011 – 2031 Report. The Strategic Provision of Active Reserves 2011 – 2031 Report has been superseded by the ARIS.

A complete list of City documents linked to the Webber Reserve Master Plan is as follows:

### City and Organisation

- A Strategic Community Plan for the City of Melville 2020-2030
- The City of Melville Corporate Business Plan 2020-2024
- Long Term Financial Plan 2013-14 to 2022-23

### City Roles and Functions

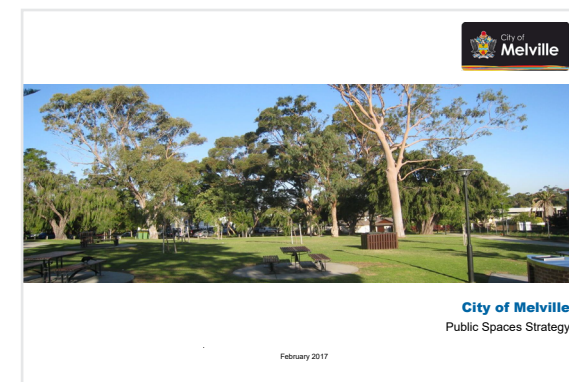
- Healthy Melville Plan 2019-2023
- Disability Access and Inclusion Plan 2017-2022
- Stretch Reconciliation Action Plan 2017-2021
- Safer Melville Plan 2017-2021
- City of Melville Cultural Plan 2018-2022
- Artwork Asset Management Plan 2013-2032
- Facilities and Infrastructure/Assets
- Active Reserve Infrastructure Strategy (2020)
- Public Spaces Strategy (2017)
- Infrastructure Strategy 2016-2036
- Building Asset Management Plan 2013-2032
- Parks Infrastructure Asset Management Plan 2014-2032
- Urban Forest Strategic Plan 2017-2036
- Land Asset Management Plan (2017)

### Population Target Groups

- Age Friendly Melville 2013-2017
- Directions from Young People 2022 – 2025

### Place and Location

- City of Melville Place Assessment Framework (2020)



# Community Engagement



## Purpose

- To engage with the community early in the project lifecycle to ensure that the outcomes of the Webber Reserve Master Plan are 'owned' and driven by the community.
- The City has sought to deliver the project based on what the community values as the most important activities for the area.
- The outcomes of the engagement form the scope for the design process.
- Findings of the stages of engagement to be shared with the community.
- Feedback on the draft designs to be collated, analysed and integrated into the final Master Plan designs.

## Methods

The following stages of engagement were implemented to ensure the purpose was met.

### 1. Idea Sharing (July – August 2021)

We asked community members what they love about Webber Reserve and what new things they would like explore as a part of the master planning process. 89 ideas were shared and 48 surveys were received.

### 2. Stakeholder Meetings (July – August 2021)

In person meetings held with Local Aboriginal Elder, Neville Collard and the Willagee Bears Rugby League Club. Local businesses notified, including Webber Gardens Retirement Village.

### 3. Walkable Workshop (August 2021)

An interactive onsite 'walk-shop' was held on Saturday, 21 August 2021. 16 members of the local community and their children attended, we explored opportunities, challenges and ideas.

### 4. Survey & Work pack (August – September 2021)

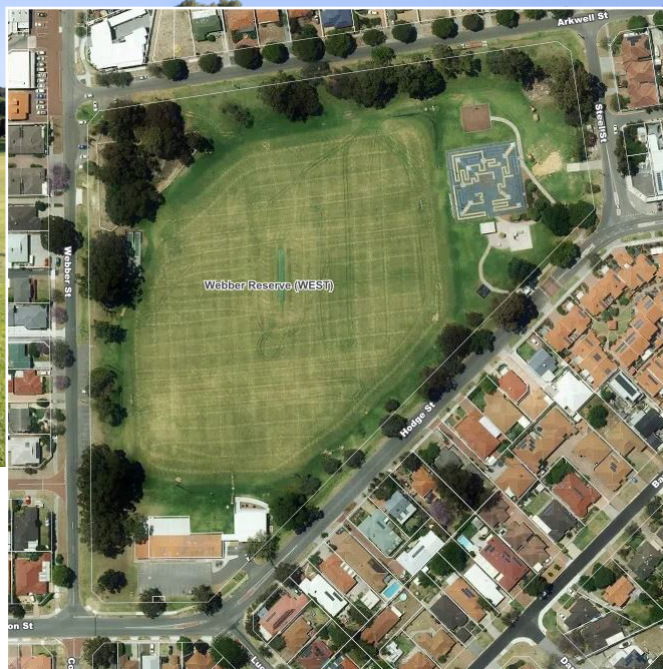
Replicating the in-person activities conducted at the 'walk-shop', the local community were invited to share their feedback via an opportunities and priorities survey and work pack. 27 surveys and 1 designer work pack were received.

### 5. Public Comment (November 2021)

In September 2021, the Project Team (including City of Melville officers and Ecoscape architects) held two design workshops, using engagement feedback, to shape the draft Master Plan. In November 2021 the community was invited to view the Master Plan and concept options and provide feedback. 80 submissions were received.

City of Melville officers attended a movie screening at Webber Reserve on Friday, 26 November 2021 to talk about the Master Plan with locals attending the event.

Engagement Snapshots for Stages 1 – 5 are listed as Appendix 1 & 2 at the conclusion of this report.



# Existing Site Conditions & Opportunities

A summary of the existing conditions of key infrastructure is contained in the below table, accompanied by opportunity comments.

BUILDINGS/STRUCTURES	EXISTING CONDITION	OPPORTUNITY/COMMENT
Sports floodlighting	New infrastructure, January 2022.	Maintain.
Pavilion	Renewal and extension complete September 2020. Tile roof did not form part of the renewal project and is in average condition, showing signs of wear though still functional. A previous shade shelter installed by user groups was removed prior to the renewal and extension complete in 2020 and was not replaced. Bin store on south east corner of pavilion (adjacent to car park entry) in average condition, though still functional.	Maintain. Consider replacement of tile roof.  Consider new shade structure abutting existing pavilion.  Consider refurbishment.
Public Toilet	Contained within pavilion foot print and renewed in 2020.	Maintain. See "Signage & Wayfinding" on page 16.
Access Ramp from sports field to change room/ pavilion level	New infrastructure complete September 2020.	Adjacent water fountain is an accessible piece of infrastructure, however a kerb on the edge of the access ramp greatly reduces equity of access. Kerb to be removed and accessible connection to path network to be provided.

<b>SPORT &amp; RECREATION</b>	<b>EXISTING CONDITION</b>	<b>OPPORTUNITY/COMMENT</b>
Nature play space	Some key elements of the play space are in a fair to poor condition and require removal or replacement in the short term future. Other elements are in a good to fair condition which may allow their retention in the medium term.	Explore opportunities for the renewal of this play space and rationalisation of existing 'Traditional' playground into a collocated play space area to service neighbourhood needs.
3-on-3 Basketball Court	Basketball hoop, post, backboard and court surface are in a fair condition, showing signs of wear but still functional.	Explore opportunities for the renewal of this infrastructure and collocation with compatible activities.
Baseball Back net	Fair condition, showing signs of wear though still functional.	Consider future need of infrastructure, not used for purpose in 10+ years.
Court space/Hardstand/Maze	The ex-court surface is in average condition, showing signs of wear and minor cracking. It is still functional. Court floodlighting is in good condition, minor ongoing maintenance will likely enable the asset to remain functional in the longer term.	Explore opportunities to retain floodlighting and consider need for the court space to be retained.
Rugby post storage racks/Rugby Posts	Good condition.	To be retained on site. Maintain.
Reserve Access Gate	Good condition.	Incorporate into long term to enable maintenance access to nearby infrastructure.
Shelter	The existing shelter is in poor condition.	Plan for new shelter/s within the North Eastern precinct of the reserve.
BBQ	Good condition. Not an accessible BBQ.	BBQ to remain in close proximity of existing location.
Playground	Good condition.	Consider rationalisation of infrastructure for single collocated play space as per item 1.
Cricket centre wicket	Good condition. Synthetic turf surface replaced operationally as required.	To be retained.
Cricket practice nets	Average condition showing signs of wear. Still functional.	Explore renewal of this infrastructure.
Sports field Floodlighting	New condition, install complete January 2022.	Maintain.

<b>SIGNAGE &amp; WAYFINDING</b>	<b>EXISTING CONDITION</b>	<b>OPPORTUNITY/COMMENT</b>
Seating	A range of seating options throughout the reserve in varying condition.	Consider replacement and placement of infrastructure to align with any future development. Explore tiered seating on the grass bank adjacent to pavilion.
Paths and pedestrian connections	Limited paths and connection points throughout the reserve at present.	Improved pathway connections and seating within the reserve and linkages to existing networks. A circuit path around the perimeter of the reserve would provide a designated route for walking and jogging. An internal network would also provide alternative routes to the existing paths, for increased safety and define areas within the reserve. This results in improved connections and interactions to existing and future facilities.

VEGETATION	EXISTING CONDITION	OPPORTUNITY/COMMENT
Vegetation	A feature of Webber Reserve is the mature trees surrounding the perimeter. These trees have been supported by recent plantings in the verge space.	Succession planting in future years and an increased amount of native trees, shrubs and ground covers can support a water wise approach to reserve provision whilst also increasing biodiversity and providing more natural shade options.

CAR PARKING	EXISTING CONDITION	OPPORTUNITY/COMMENT
Pavilion Carpark (Hodge Street)	The carpark surface is in poor condition and there are some drainage concerns.	The carpark is being considered for resurfacing in the 2022-2023 financial year. A long term consideration may be to extend this carpark to the west.
Steele Street Verge	The portion of this verge popular for parking is in poor condition.	Consider formalised parking.
Hodge Street Verge	Turf in good condition.	Considered replacement of pre-cast concrete kerbing for mountable kerb in appropriate areas to enable increased utilisation for informal parking.
Arkwell Street Verge	Turf in good condition.	Considered replacement of pre-cast concrete kerbing for mountable kerb in appropriate areas to enable increased utilisation for informal parking.
Webber Street Parking	Formal parking in good condition with little signs of wear	Maintain as required.

CULTURAL INTERPRETATION/ PUBLIC ART	EXISTING CONDITION	OPPORTUNITY/COMMENT
Cultural Interpretation	Cultural recognition on site is very limited.	Explore links to cultural heritage through interpretation, art and traditional place naming. See "Signage & Wayfinding" on page 16.
Water Fountain/Pipe/ Functional Artwork	Pipework in fair condition, soft fall in poor condition. Water fountain functional.	Investigate new art opportunities and ensure access to a water fountain is retained in close proximity of existing infrastructure.
Mural on access ramp to change rooms/store	This mural by local Artist Liam Dee was complete in February 2021 and recognises both the history and current day uses of the site in a 3 dimensional and figurative style which contributes to the vibrancy of Webber Reserve.	Maintain as required.

DRAINAGE & IRRIGATION	EXISTING CONDITION	OPPORTUNITY/COMMENT
<b>Compensation Basin (Sump)</b>	<p>The existing compensation basin and drainage infrastructure on site plays an important role in managing storm water for the surrounding areas.</p> <p>A new retaining wall and new fencing to the surrounds of the basin was complete in 2021.</p>	<p>No change is proposed to this function, maintain as required.</p>
<b>Irrigation</b>	<p>The irrigation infrastructure on site is aging and is being considered for replacement in the short term future</p>	<p>A new irrigation system will be designed in the next 1-2 financial years and will collaborate with designs for outcomes of the Master Plan and any future development that occurs.</p> <p>Irrigation system replacements for sports fields will use a mole plough to mitigate impact to turf surfaces.</p>

SIGNAGE & WAYFINDING	EXISTING CONDITION	OPPORTUNITY/COMMENT
	<p>Reserve sign located along Hodge Street, remediation evident from graffiti.</p> <p>Wayfinding signage for public toilet identified as poor/non-existent.</p>	<p>Interpretive signage for cultural acknowledgement.</p> <p>Install way finding signage directing people from North Eastern recreation space to Public Toilets.</p>

MASTER PLAN



The following plans were produced by Ecoscape Australia for the City of Melville, the first plan titled 'Site Master Plan, SK01-E' shows the overall vision for the site, whilst the second plan shows a concept for the North East portion of the reserve titled 'Play Detail SK02-E'. Three (3) perspective images are also provided to demonstrate how key areas of the reserve may look in future.

RECREATION CONCEPT (PLAY DETAIL)



IMAGES ARE INDICATIVE ONLY AND DO NOT REPRESENT SPECIFIC ITEMS

**VIEW 1 - CLUBHOUSE PERPECTIVE**



**VIEW 2 - COURTS PERSPECTIVE**



**VIEW 3 - PLAY PERSPECTIVE**





## Conclusion

The City of Melville's Active Reserve Infrastructure Strategy provides the research and justification for Master Planning the Webber Reserve to secure the future of the reserve in the vibrant and growing suburb of Willagee. The Master Plan has been developed through a considered approach to improved accessibility, connectivity and activation of this highly valued park land.

The Master Plan takes a holistic view of the reserve and its catchment to provide a high degree of confidence that the needs of the community can be met in an efficient manner.

Capacity for additional sport use exists in the summer season and any infrastructure restrictions have been resolved in this regard, an ongoing club user/s should be allocated reserve use and integrated into the pavilion.

To form the Master Plan and Concept for the North East Recreation Space, the following methodology has been applied:

- A review the Active Reserve Infrastructure Strategy in the context of Webber Reserve.
- Analysis and alignment to City of Melville strategic planning and influences.
- Review the History of the Reserve.
- Extensive engagement process with the local community and key stakeholders.
- Collaborative engagement with City of Melville officers to inform planning processes.
- A review of existing site conditions and opportunities.

## Implementation

With the exception of the carpark extension to the main pavilion carpark along Hodge Street (which is considered a Medium to Long Term priority), the balance of the elements contained within the Master Plan are considered short term priorities (0-5 years) and it is recommended to proceed through the design development process in the immediate future (2022/2023).

Following design development, it is recommended that the City proceeds to construction, commencing in the 2023/024 financial year.

Appendix 3 an 'Opinion of Probable Costs' has been prepared to understand and early estimate for the magnitude of works associated to the Master Plan.

A suitable summer club user/s should be identified and allocated reserve use and integrated into the pavilion for the commencement of 2022/2023 summer season.

Engagement Snapshot

# Webber Reserve Master Plan

Stages 1 to 4

We're developing a master plan for Webber Reserve in Willagee to identify opportunities for more sport, recreation and leisure activities, as well as improved accessibility and connectivity throughout the area.

The master plan aims to enable:

- Better activation of the reserve
- Greater community access
- Contemporary facilities catering for all abilities
- Day and night access
- Cater for population/sports participation growth
- Efficiency of investment.

Through all major stages of the design process, we sought feedback to ensure the master plan meets the needs of the community.

## We informed

**1002** households received direct invitation  
**726** Melville talks visitors  
**8958** eNews subscribers  
**8890** people on Facebook

## Participation Results

Community participants

**187**



- 90 ideas shared
- 75 surveys completed
- 2 stakeholder meetings
- 18 community members participated in the onsite workshop
- 2 youth submissions

## Stages of engagement

- The community were invited to **share their ideas** via Melville Talks, in person or over the phone.
- **Stakeholder conversations** took place with an Aboriginal Elder and a local sporting club.
- Local community members participated in an **interactive onsite walk-shop**.
- Local community shared their feedback via an **online opportunities and priorities survey**. The younger community were invited to complete a designer workpack

## What happens next?

The final stage of engagement will give the community an opportunity to provide feedback when the draft is formally advertised.

**137** ideas shared

## Stage 1: Community value and idea sharing

### Key themes (in order of most valued):

- Dog off-leash amenity
- Green space and wildlife habitats
- A place for play for all ages
- Proximity to home
- Nature play
- Open space.

### Main concerns:

- Responsible dog ownership
- Lack of shade in summer
- Aging amenities.

### Ideas to explore:

- More park amenities
- Pathway around the reserve
- Upgrade to existing playground
- Connection between spaces
- Improved basketball/netball area
- Pump/skate park
- More bins
- Public toilets
- Street hockey and open maze
- Increased lighting
- Increased shelter and shade.

# Engagement Snapshot Webber Reserve Master Plan

Stage 5

13

## About the project

We're developing a master plan for Webber Reserve in Willagee to identify opportunities for more sport, recreation and leisure activities, as well as improved accessibility and connectivity throughout the area.

During the month of **November 2021**, we invited local residents of the area, key stakeholders, and the broader community to view the draft Webber Reserve Concept Plans and to share their level of support and feedback.

## Who we informed

**661** direct email invitation to residents and stakeholders  
**724** Melville talks visitors  
**18k** eNews subscribers  
**3,802** people on Facebook, Instagram and Twitter

## Who we spoke to

**95%** of participants informed us that they were Willagee residents

3 respondents mentioned they'd like the scooter track removed from Concept 1

7 respondents mentioned they'd like the open-paved game area removed from Concept 2

## We heard concerns about

## Participation Results

Community participants

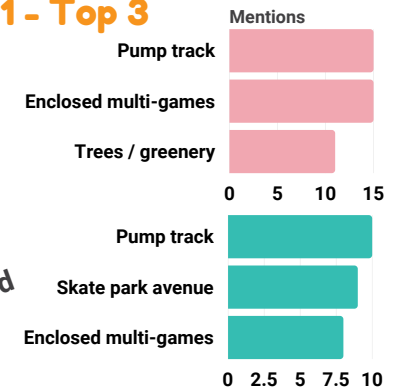
**80**

### Your feedback

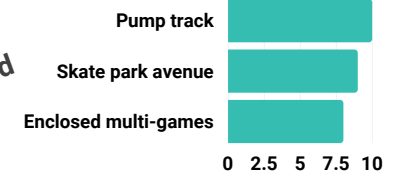
**59.74%** supportive  
**36.36%** supportive with concerns  
**3.90%** no level of support provided  
**318** comments received

## Concept 1 - Top 3

What you love

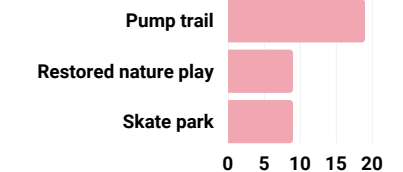


What could be improved

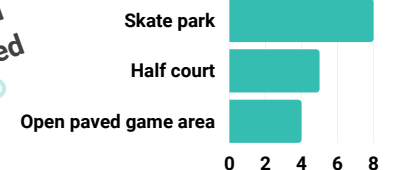


## Concept 2 - Top 3

What you love



What could be improved



**Opinion of Probable Costs**

**Webber Reserve**



PROJECT No: 4689-21  
 CLIENT: City of Melville  
 STATUS:  
 AUTHOR: NS  
 CHECKED: PJ  
 DATE: 22/12/2021

No.	DESCRIPTION	UNIT	RATE	QUANTITY	AMOUNT
<b>1</b>	<b>PRELIMINARIES</b>				<b>\$139,280</b>
1.1	Preliminaries & establishment	item		10%	\$139,280
<b>2</b>	<b>SITWORKS</b>				<b>\$122,910</b>
2.1	Remove existing hard finishes, soft finishes, and existing equipment and disposal offsite	sq m	\$10.00	11835	\$118,350
2.2	Undertake bulk earthworks to achieve soft fall depths (300mm)	sq m	\$8.00	570	\$4,560
<b>3</b>	<b>SOFT LANDSCAPE</b>				<b>\$148,640</b>
3.1	Supply & install feature planting & mulch (2/sqm)	sq m	\$23.00	1850	\$42,550
3.2	Supply & install groundcover planting & mulch (tubestock)	sq m	\$15.00	2850	\$42,750
3.3	Supply & install mulch only	sq m	\$7.00	1800	\$12,600
3.4	Supply & install playground sand	sq m	\$22.00	190	\$4,180
3.5	Supply & install proposed tree (45L)	ea	\$180.00	52	\$9,360
3.6	Supply & install roll on turf	sq m	\$10.00	3000	\$30,000
3.7	Supply & install 300mm depth softfall mulch	sq m	\$40.00	180	\$7,200
<b>4</b>	<b>HARDWORKS</b>				<b>\$332,050</b>
4.1	Supply & install broom finish concrete pavement	sq m	\$60.00	220	\$13,200
4.2	Supply & install decorative concrete pavement	sq m	\$90.00	920	\$82,800
4.3	Supply & install red asphalt footpath	sq m	\$40.00	2520	\$100,800
4.4	Supply & install rubber softfall	sq m	\$200.00	200	\$40,000
4.5	Supply & install concrete edging	lin m	\$35.00	100	\$3,500
4.6	Supply & install asphalt car park surfacing including kerbing and linemarking	PS	\$65.00	350	\$22,750
4.7	Allowance for paved terraces to front of clubhouse	PS	\$300.00	230	\$69,000
<b>5</b>	<b>FURNITURE</b>				<b>\$235,500</b>
5.1	Supply & install bench seat	ea	\$1,500.00	7	\$10,500
5.2	Supply & install picnic setting	ea	\$5,000.00	5	\$25,000
5.3	Supply & install shade shelter - small (4 x 4m) with lighting	ea	\$10,000.00	1	\$10,000
5.4	Supply & install shade shelter - medium (4 x 10m) with lighting	ea	\$25,000.00	1	\$25,000
5.5	Supply & install shade shelter - large (4 x 25m) with lighting	PS	\$75,000.00	1	\$75,000
5.6	Supply & install double BBQ	ea	\$11,000.00	1	\$11,000
5.7	Supply & install shade sail	PS	\$20,000.00	2	\$40,000
5.8	Supply & install bin enclosure	ea	\$2,000.00	3	\$6,000
5.9	Supply & install drink fountain	ea	\$6,000.00	1	\$6,000
5.10	Supply & install bollards	lin m	\$75.00	320	\$24,000
5.11	Supply & install service/vehicle access gate	ea	\$1,500.00	2	\$3,000
<b>6</b>	<b>PLAY &amp; EXERCISE EQUIPMENT</b>				<b>\$456,700</b>
6.1	Refurbishment of existing nature play playground	PS	\$10,000.00	1	\$10,000
6.2	Supply & install Triple Swing Unit (Willplay)	item	\$16,200.00	1	\$16,200
6.3	Supply & install hard court including linemarking and graphics	sq m	\$110.00	375	\$41,250
6.4	Supply & install timber balance beams	ea	\$850.00	5	\$4,250
6.5	Supply & install log steppers including footing	ea	\$200.00	30	\$6,000
6.6	Supply & install salvaged log	ea	\$1,500.00	5	\$7,500

6.7	Supply & install boulders including subgrade	ea	\$500.00	10	\$5,000
6.8	Supply & install scooter track	sq m	\$400.00	170	\$68,000
6.9	Supply & install inclusive roundabout (Proludic)	item	\$15,200.00	1	\$15,200
6.10	Allowance for exercise equipment nodes	PS	\$5,000.00	5	\$25,000
6.11	Supply & install Sand Play Table - Natural Timber (Lypa)	item	\$3,000.00	1	\$3,000
6.12	Supply & install Sand Pulley (Lypa)	item	\$2,000.00	1	\$2,000
6.13	Supply & install Cubby Creator (Lypa)	item	\$1,700.00	2	\$3,400
6.14	Supply & install basketball hoop - extended basketball unit	item	\$3,500.00	2	\$7,000
6.15	Supply & install climbing activity net	item	\$20,000.00	1	\$20,000
6.16	Supply & install nature play tower	item	\$12,500.00	1	\$12,500
6.17	Allowance for pump track	sq m	\$250.00	320	\$80,000
6.18	Allowance for timber viewing deck	sq m	\$700.00	22	\$15,400
6.19	Allowance for skate park avenue	PS	\$85,000.00	1	\$85,000
6.20	Allowance for chainlink fencing to games court	lin m	\$160.00	75	\$12,000
6.21	Allowance for nature play fencing	lin m	\$300.00	60	\$18,000
<b>7</b>	<b>IRRIGATION</b>				<b>\$97,000</b>
7.1	Allowance for irrigation to turf and planting areas	sq m	\$20.00	4850	\$97,000
<b>8</b>	<b>CONTINGENCY</b>				<b>\$76,604</b>
8.1	Contingency sum	per cent		5%	\$76,604
<b>TOTAL (excluding GST)</b>					<b>\$1,608,684</b>
GST					\$160,868
<b>TOTAL (including GST)</b>					<b>\$1,769,552</b>
<p><i>NOTE: These costs are indicative only and are reflective of current construction costs in the metropolitan area. The reader should be satisfied that the costs are appropriate for their purpose. No allowances have been made for impacts on construction labour or supply of materials due to COVID.</i></p>					