



**C25/249 Motions Carried at the Annual General Meeting of Electors**  
**Held 11 March 2025**

Mr S French, Ardross

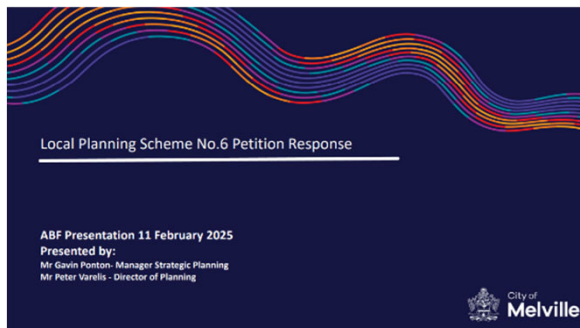


City of  
**Melville**

LPS6 Review  
AGM of Electors Motions  
*– why they're important*

# Acknowledgement

We are grateful to the City for undertaking early engagement concerning the LPS6 review (Stage 3) and thank the City for doing so.



## Scheme Review Process

The changes the City is proposing to make to Local Planning Scheme No. 6 constitute as a “Complex Amendment”, as defined in the *Planning and Development Act 2005 (the Act)*. The process of amending a scheme, from its conception to the approved changes being gazetted, can be considered in two distinct stages.



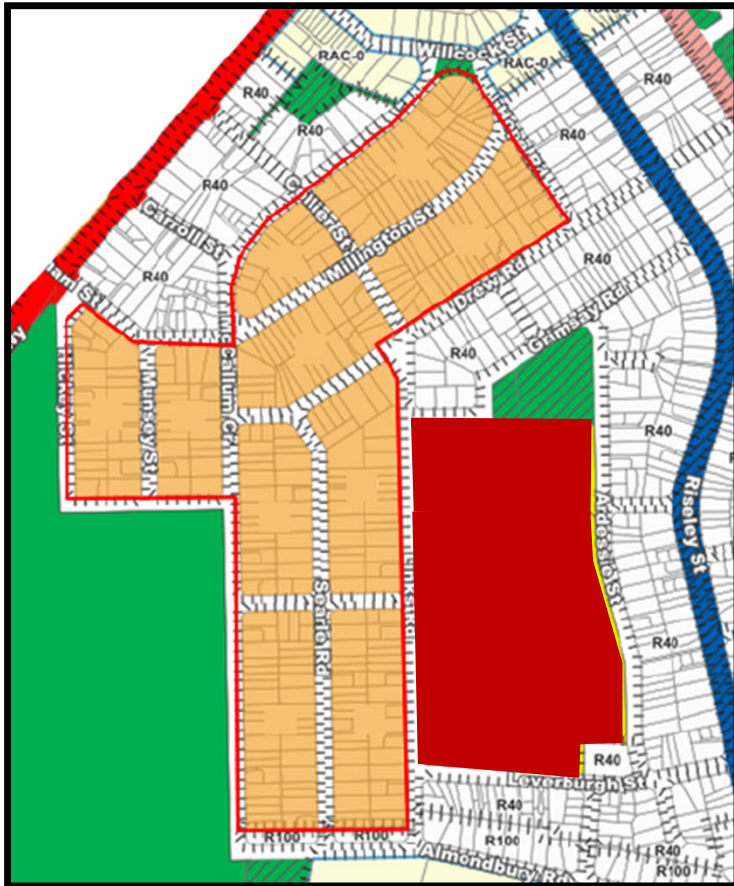
## Why Engage Early?

Even though the City **is still investigating** the impacts of the proposed changes, there’s a **benefit** in inviting **community input early** in the process.

The feedback we received is being used to guide where we deploy our resources to ensure we’ve **appropriately considered and responded to the issues that have been identified**



# Community input example: Wireless Hill East



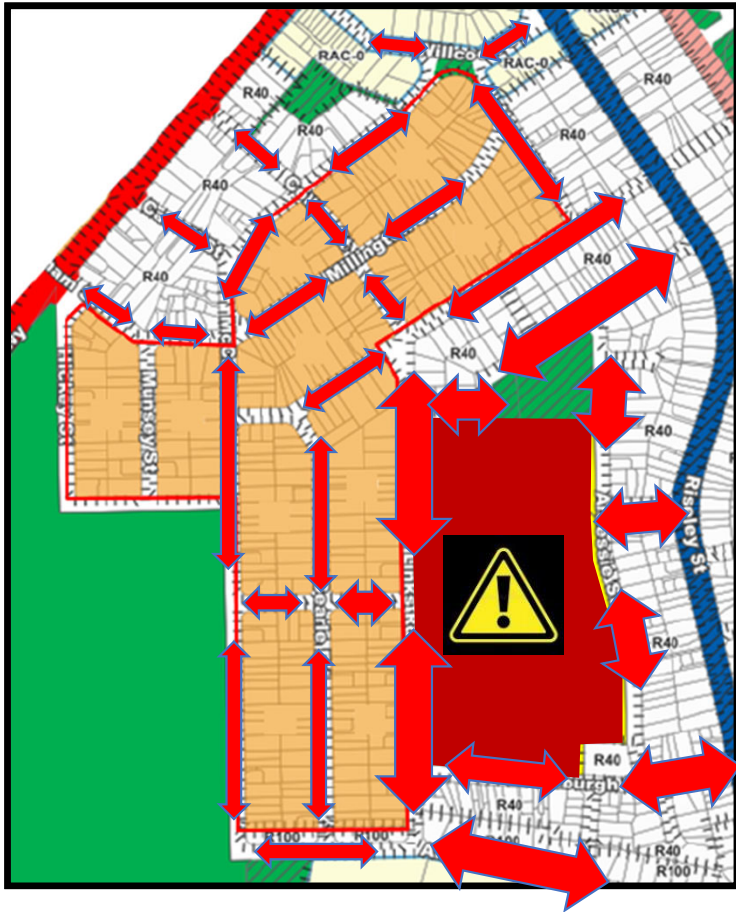
## Why are we considering this change?

The area shown on the map is flanked by the sorts of amenities the City looks for when considering areas for increased density. Both Westfield Booragoon and Riseley Centre are important activity centres within walking distance, along with Applecross High School and Wireless Hill. Slightly further afield are Riseley Street and Canning Highway, both high volume roads with frequent bus services.

It's also noted that the surrounding residential areas are already R40 or higher.

**However...**

# Community input example: Wireless Hill East



## Why are we considering this change?

The area shown on the map is flanked by the sorts of amenities the City looks for when considering areas for increased density. Both Westfield Booragoon and Riseley Centre are important activity centres within walking distance, along with Applecross High School and Wireless Hill. Slightly further afield are Riseley Street and Canning Highway, both high volume roads with frequent bus services.

It's also noted that the surrounding residential areas are already R40 or higher.

- ...High School **AND** Primary School
- ...**WITHIN** the residential area
- ...Already generates **A LOT** of traffic
- ...It's **INCREASING...**

# Example: Wireless Hill East



Links Road

Example: Wireless Hill East



Links Road

Example: Wireless Hill East



Grimsay Road

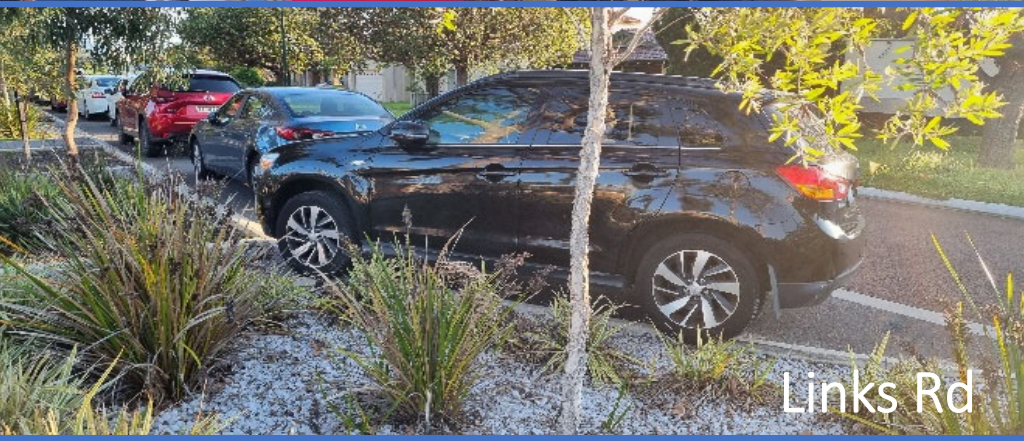
# Example: Wireless Hill East



Grimsay Rd



Grimsay Rd



Links Rd



Links Rd



Grimsay Rd...Saturday



Leverburgh St..'P' platers

# Example: Wireless Hill East



Links Road/Alexander Road

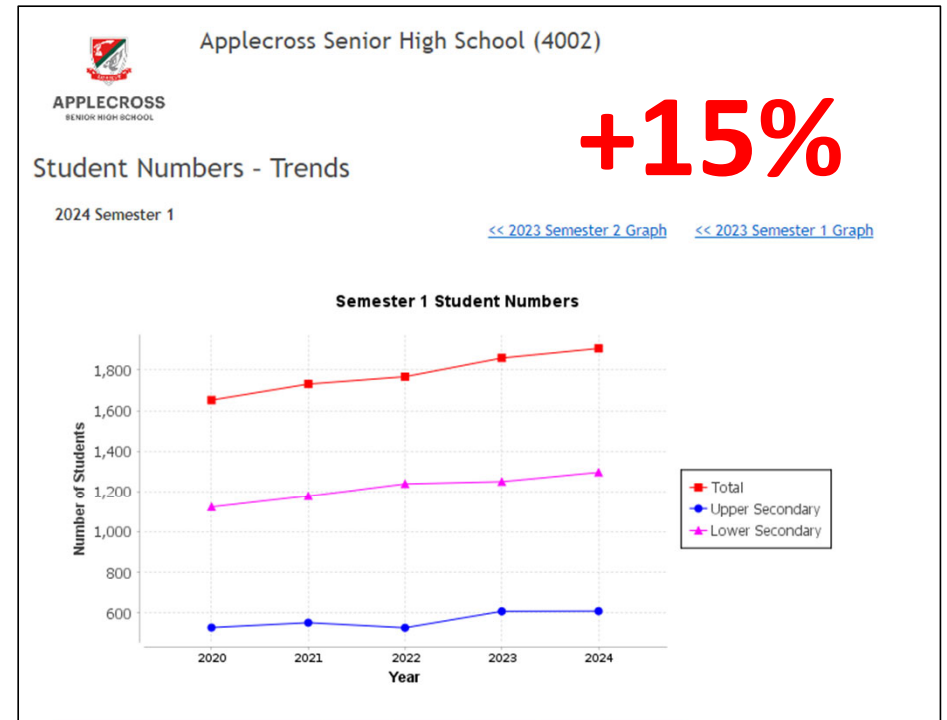
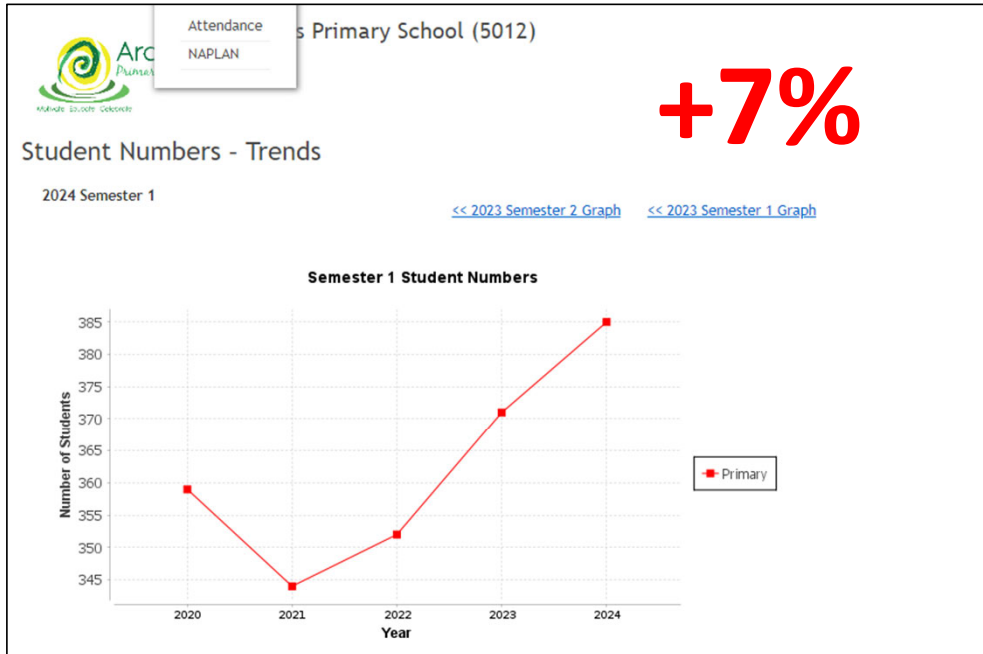
Example: Wireless Hill East



Alexander Road – west towards W Hill

# Example: Wireless Hill East

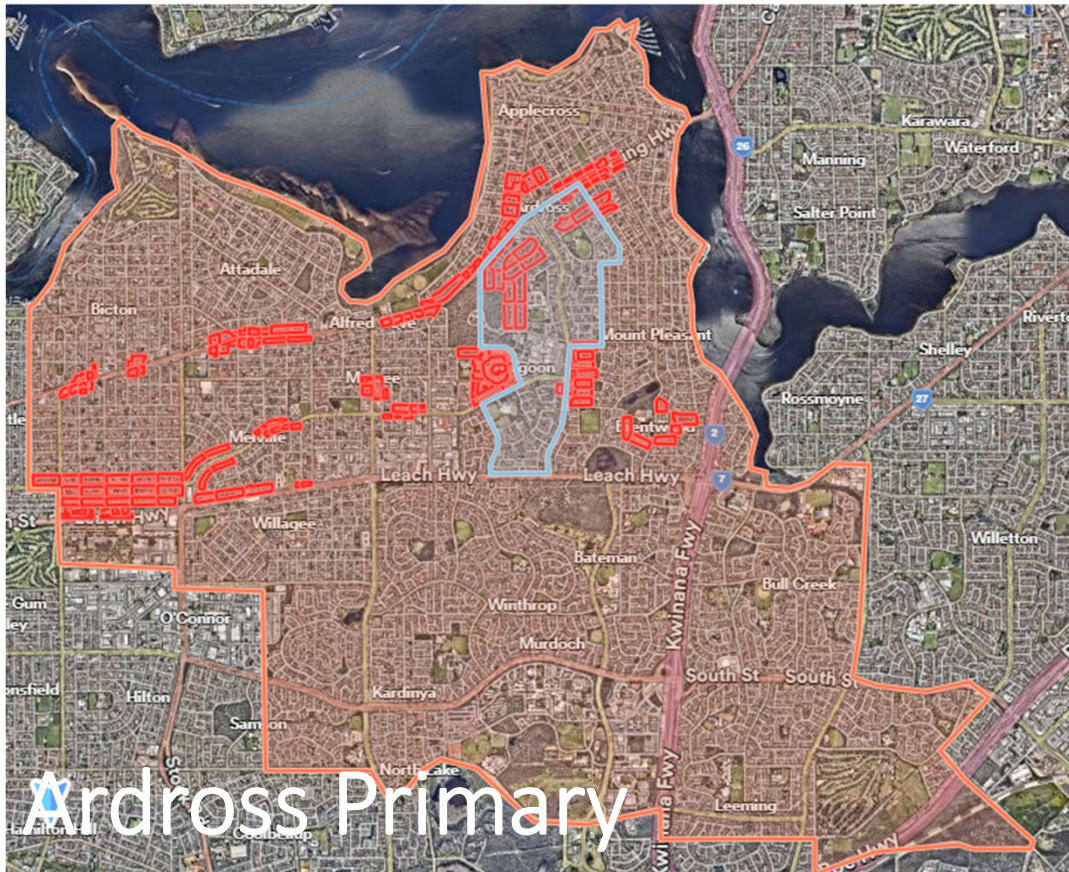
...increasing? **YES!**



# Example: Wireless Hill East

...increasing? **YES!**

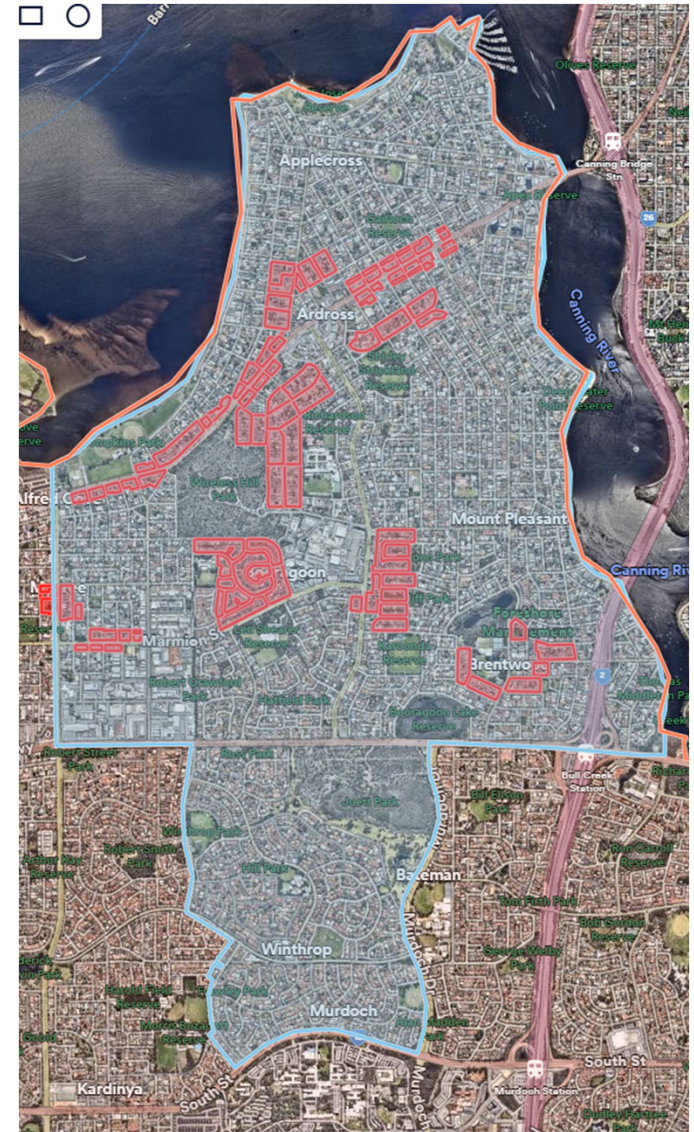
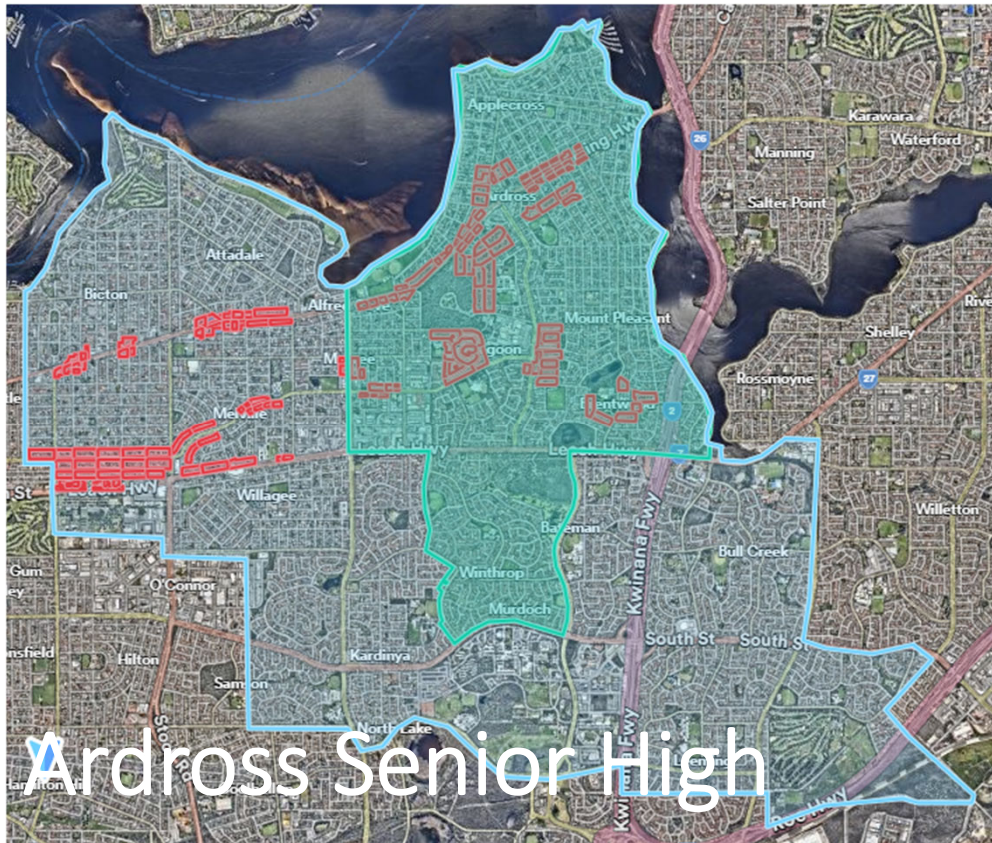
**18%**



# Example: Wireless Hill East

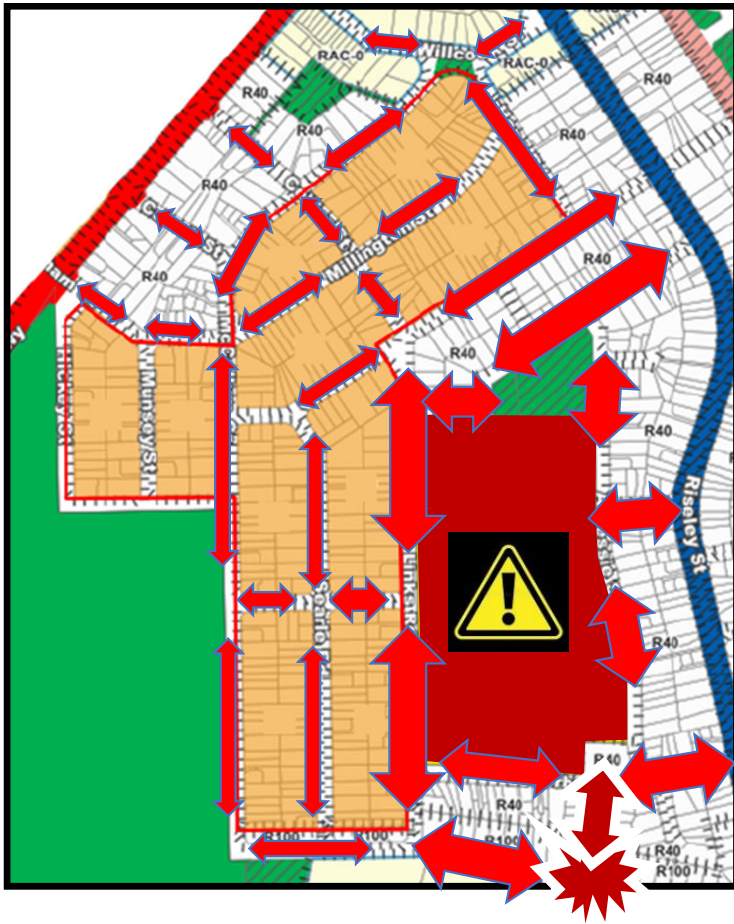
- ....increasing? **YES!**

**61%**



# Example: Wireless Hill East

2.Usage restrictions: This car park may only be used by persons who work in, visit or use this Centre.



- **DAP-2024-13** – in Frame Precinct
- **7 STOREYS – not 4!** 57 Units + 3 Houses
- Transport Impact Statement – **FLAWED**
- Dump **ALL** traffic on Bragor Place – **NOT** Almondbury
- ‘Adequate on-street parking’ – **WRONG!**
- ‘Public parking’ – Westfield – **WRONG!**

Conditions  
of entry



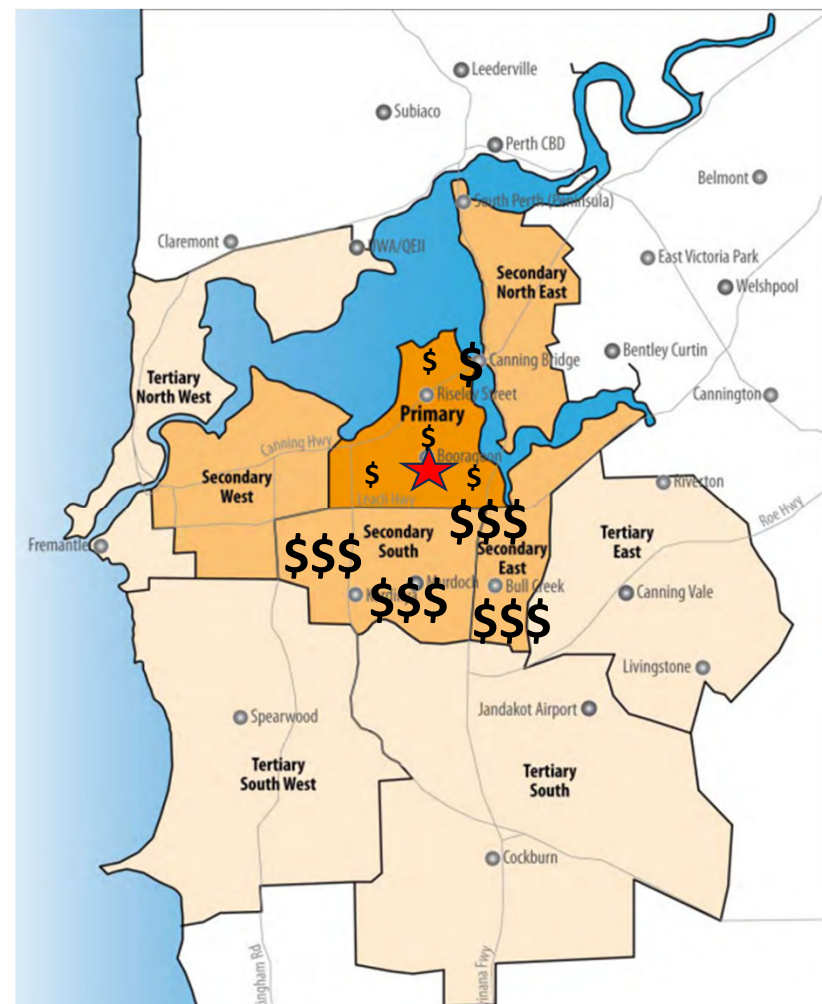
# Example: Wireless Hill East

- ...how many new dwellings will you **actually** get anyway?
- **LOTS** of recent housing at R20...high land cost, high build cost
- ...demolish anytime soon? **NOT LIKELY!**
- Cause problems? – **YES!** Meet targets? – **NO!**
- ...Left it too late - **wrong place, wrong time**



# Example: Westfield redevelopment

- It's all about the numbers..... **\$750 M** cost
- **Delayed 4 years!** ..cost increases..supply chain issues..
- Melville City Centre Structure plan (2015) – expenditure profile...**how much \$\$\$ being spent / how much more \$\$\$ can get?**
- **Attractive** centre + **more** residents = **\$\$\$**
- Where from? Socio-economic modelling:
- **Canning Bridge – GROWTH \$**
- **Residential to north – LIMITED, SLOW \$**
- **Murdoch – BIGGEST GROWTH \$\$\$**



Canning Highway...the public transport dream...

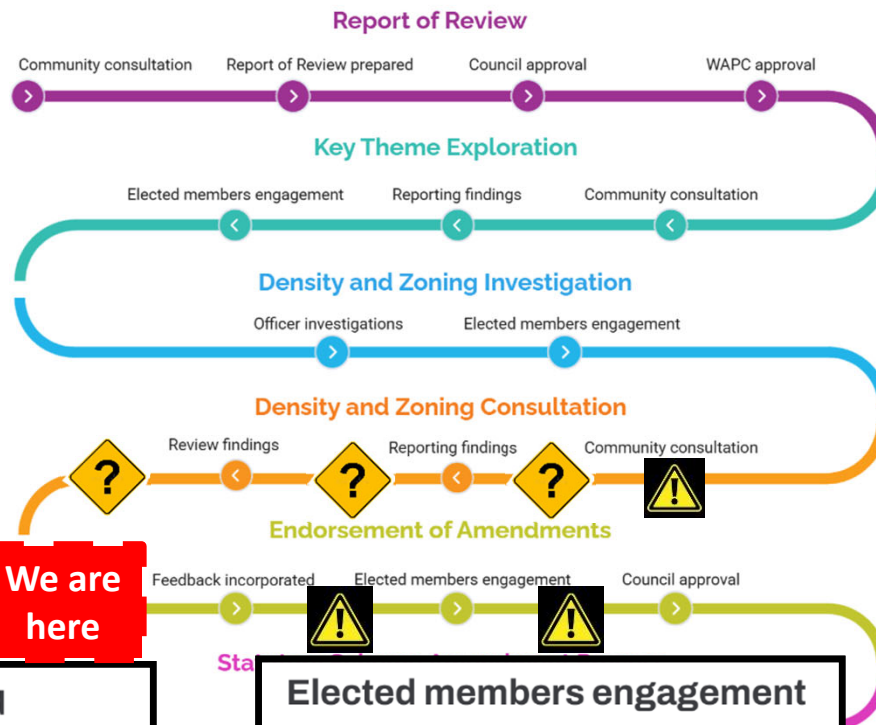


Canning/Riseley

## ...Early community input:

- Lots of feedback...objections...emails...letters...calls...(ongoing)
- **Why? ..already** doing heavy lifting..**already** lots of change..**not 'N'**
- Significant community **concern, worry** and **frustration**
- **Petitions – 985** signatures
- Trust in the City **significantly eroded** - series of **mis-steps** in the consultation process (***Motion 2 - Electors AGM***)
- ? Does the City **really** understand issues of critical importance in our community ? **...DON'T KNOW**
- ? What's in the **Report of Findings** ? **...DON'T KNOW**
- **LATEST PROBLEM:** ...updated LPS6 process...

# LPS6 process (updated 23/01/25)



*'Too often in Australia, governments consult residents to provide a veneer of respectability to a pre-determined outcome rather than genuinely responding to residents' priorities'*

**Feedback incorporated**

City Officers incorporate community feedback into changes to scheme text and maps (early 2025).

Stage - Endorsement of Amendments

**Elected members engagement**

Elected member workshop (EMES) on draft scheme content (Q2 of 2025).

Stage - Endorsement of Amendments

**Ordinary Meeting of Council**

Item presented to Council seeking endorsement of cumulative scheme changes for formal advertising, refers document to WAPC (Q3 of 2025)

Stage - Endorsement of Amendments

# ...what about us...?



## STAKEHOLDER ENGAGEMENT POLICY

To ensure City of Melville residents and all other relevant stakeholders are provided **a fair opportunity to participate and contribute to decisions made by the Council and its staff.**

This Policy applies to **Elected Members, City of Melville staff** and consultants contracted by the City.

Stakeholder Engagement is about enabling **stakeholder participation** in the City's activities, projects and policies.

**At the very least**, engagement seeks to **achieve consensus** on what is (or is not) agreed upon by stakeholders.

**At best**, it is about empowering stakeholders to become **equal partners** with government in decision-making.

**PRIORITY 3**

Empower the voices of our diverse community by strengthening engagement

At the City of Melville, our Vision, Mission and Values guide our decisions and how we interact with our community.

### Our Vision

Vibrant, **Sustainable Inclusive** Melville

### Our Mission

To provide **good governance** and **quality** services for the City of Melville community.

### Our Values

- Excellence

Striving for the **best possible outcomes**

- Participation

**Involving, collaborating and partnering**

- Integrity

Acting with **honesty, openness and with good intent**

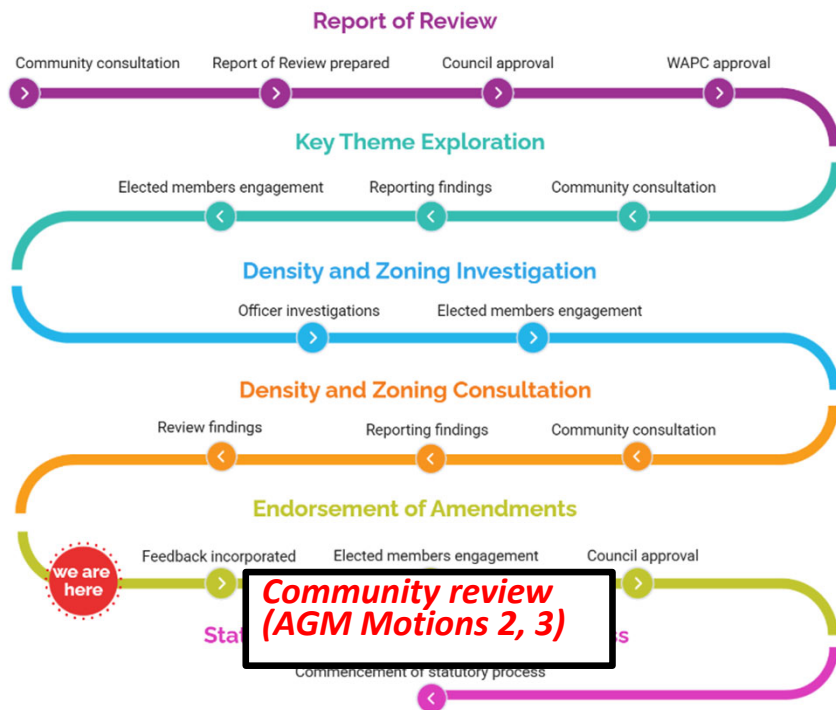
- Caring

Demonstrating empathy, kindness and **genuine concern**



**OUR APPROACH** To put the customer at the centre of everything we do.

Please **change** the process...



### AGM Motion 2

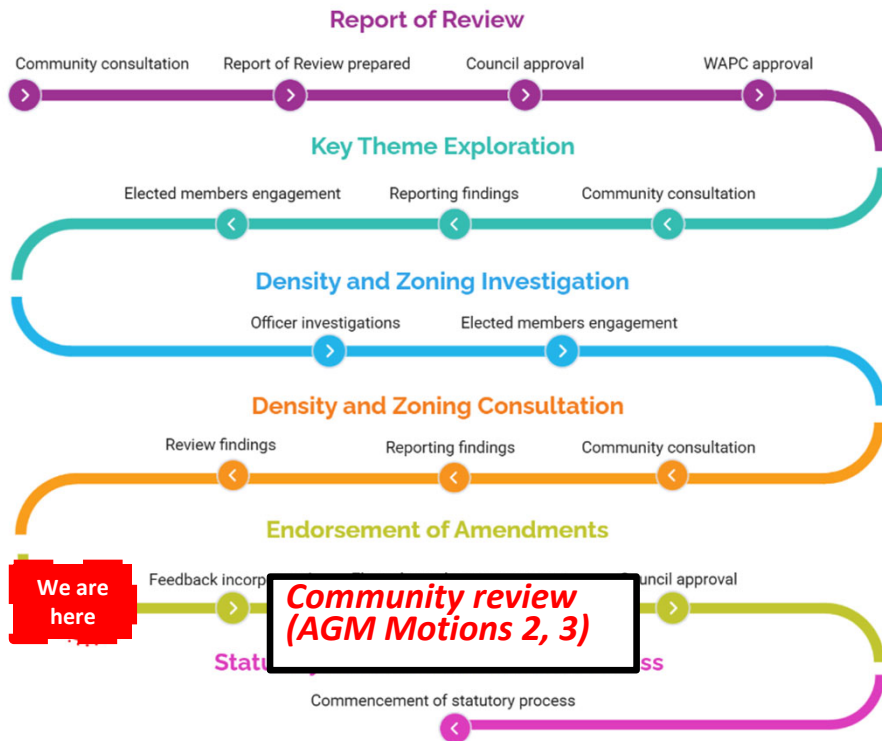
**Fair and meaningful opportunity to participate -**

- **Community** - review the Report of Findings
- **Have report amended if fails to respond appropriately to feedback, comments and concerns**
- **Do so before submission to Council for approval and progression to Statutory Process**

### AGM Motion 3

**CEO - report to Council: resource requirements, key considerations, and implications of developing Precinct Structure Plans for the Bull Creek and Murdoch Train Station Precincts**

# How it **should** be...



*"The feedback we received is being used to guide where we deploy our resources to ensure we've appropriately considered and responded to the issues that have been identified" CoM February 2025*

