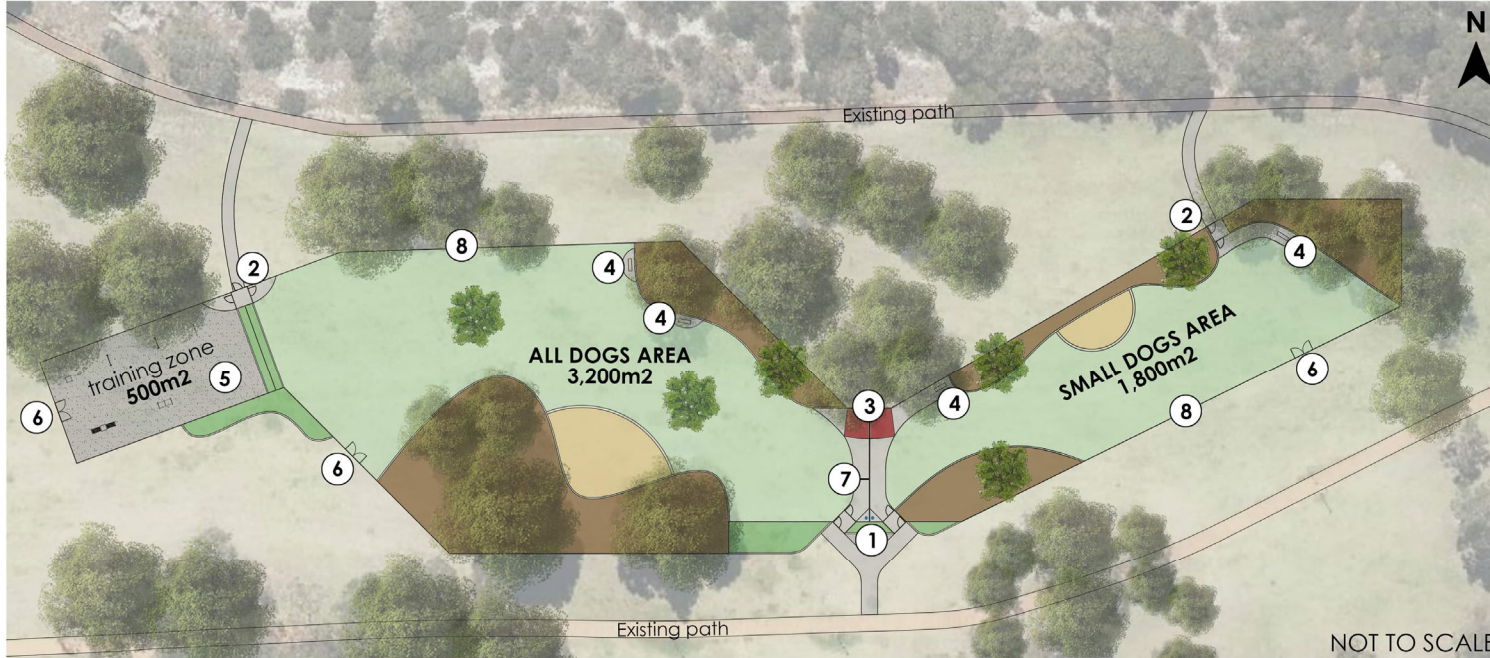


Fenced Dog Play Park

CONCEPT PLAN September 2021



Total fenced area = 5,500m²

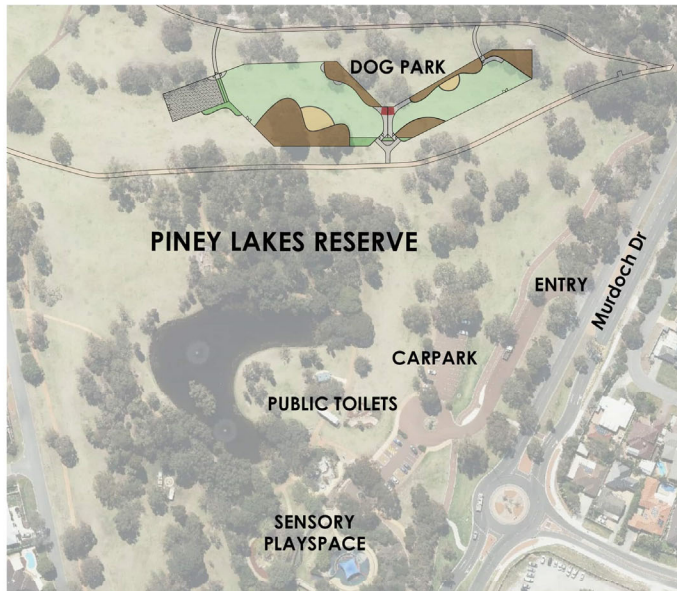


LEGEND

- 1 MAIN ENTRY**
 - dual-gated entrance
 - concrete path
 - dog waste bin
 - drinking fountain with dog bowl
 - entry garden
 - signage with park rules and etiquette
- 2 SECONDARY ENTRY/EXIT POINTS**
 - dual-gated entrance
 - concrete path
- 3 SHELTER WITH SEATING**
- 4 SEATS**
- 5 DOG AGILITY EQUIPMENT**
- 6 SERVICE GATES**
- 7 1.5m HIGH INTERNAL FENCE** (solid dividing fence)
- 8 1.8m HIGH BOUNDARY FENCE** (chain wire fence)
- CONCRETE PATH**
- RUN AND PLAY ZONE** (existing turf with new irrigation)
- SAND PLAY ZONE**
- SENSORY ZONE** (mulch) with nature based equipment such as logs, stumps, tunnels and boulders
- GARDEN BED AND PLANTING**
- TRAINING ZONE** (gravel)
- EXISTING TREES** (all existing trees will be kept)
- NEW TREES**

NOTE: This is not a final plan. Minor modifications can occur during quoting and construction phases

CONTEXT PLAN



INSPIRATIONAL IMAGES



The different activities zones through the park were created to encourage movement, and to offer active spaces for dogs to play and run, and passive spaces for them to sniff, retreat and explore.