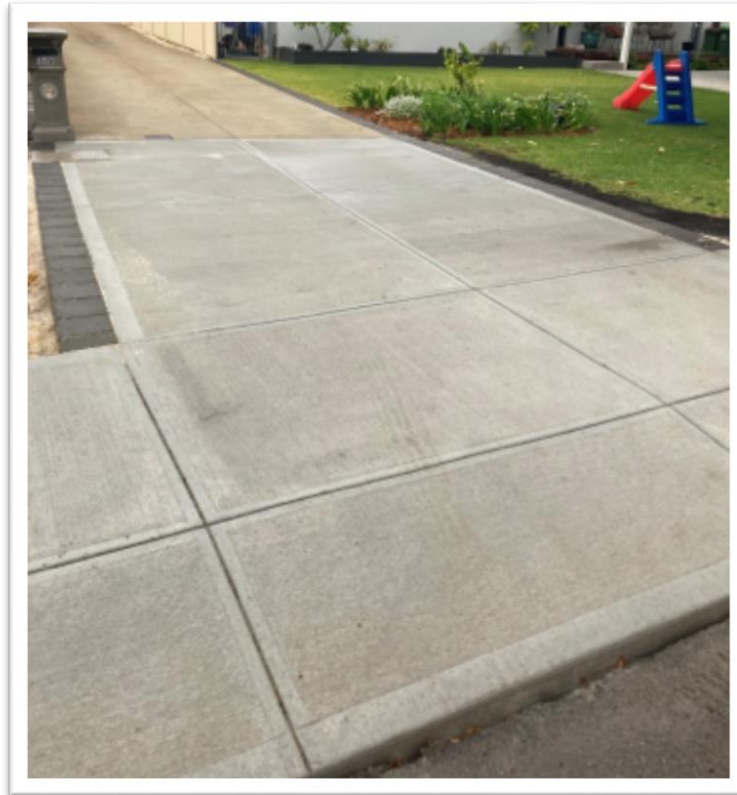


Attachment: T21/3917

Examples of Constructed Crossovers at Davies Crescent, Kennedy Street and Mullings Way



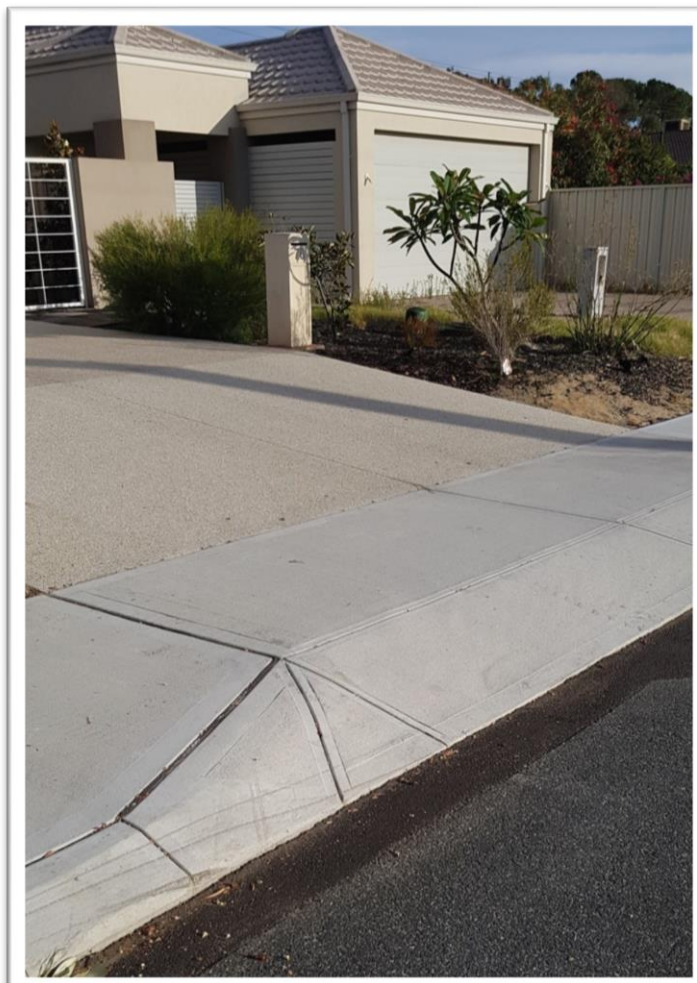
Kennedy Street, Alfred Cove

Cut back to property line and reinstated in concrete to tie into new path level



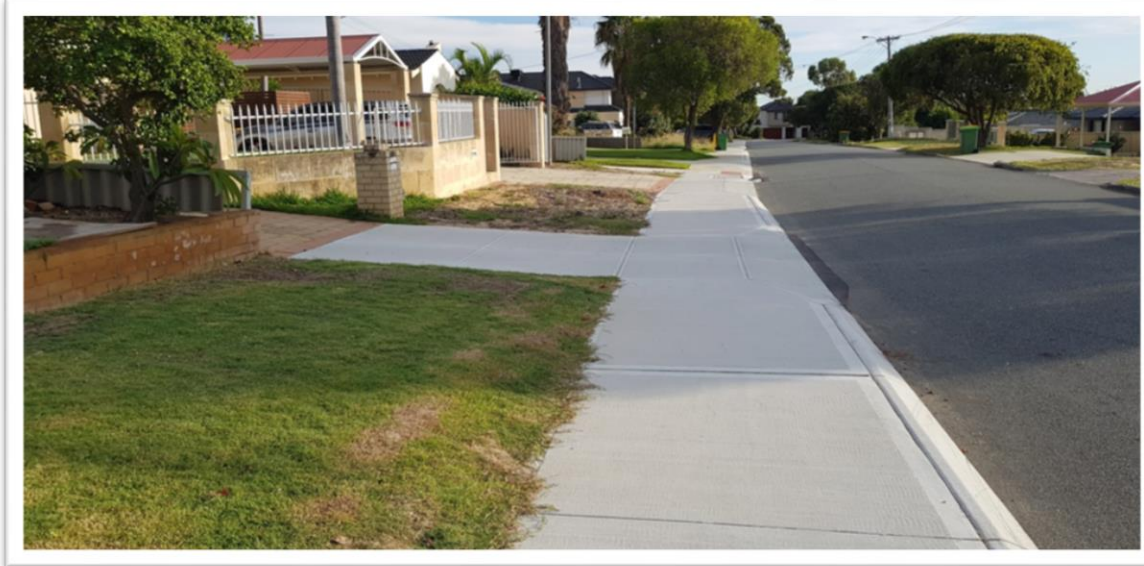
Kennedy Street, Alfred Cove

No changes to crossover, path abutted up to existing compliant crossover



Davies Crescent, Kardinya

Cut back to property line and reinstated in exposed aggregate to obtain a suitable transition



Davies Crescent, Kardinya

Reinstated to property line to match the path level



Davies Crescent, Kardinya

Reinstated pavers to match the path level



Davies Crescent, Kardinya

Reinstated pavers to match the path level with the inclusion of an adjustment to the service lid



Mullings Ways, Myaree

Abutting to existing concrete aggregate crossove