

Presentation to City of Melville  
Request for Support for Community Engagement  
11 Cottrill Street Myaree



Opal

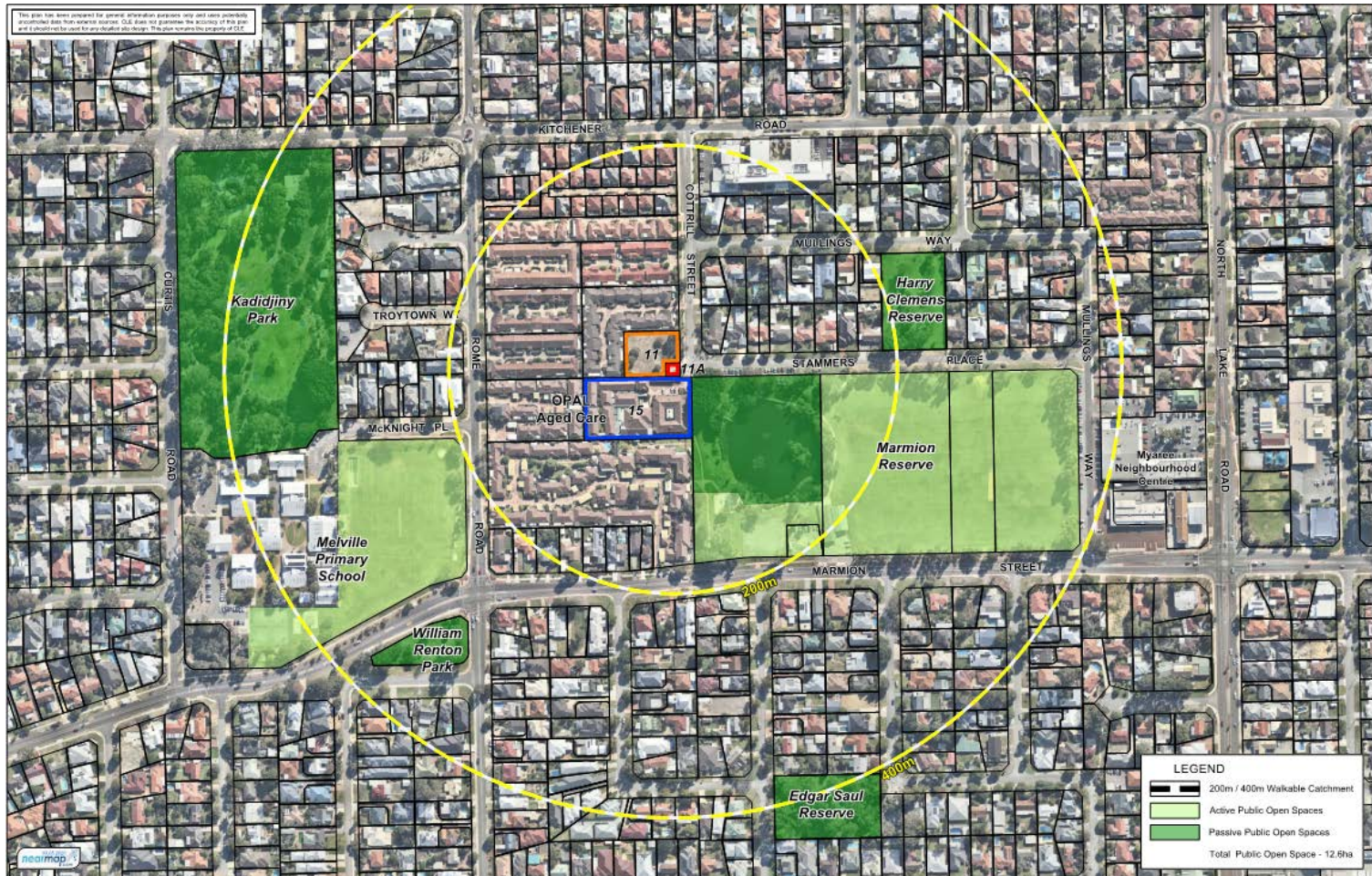
specialist aged care

# Site Plan



specialist aged care

# Public Open Space (200m – 400m)



specialist aged care

nearmap

# Opal's Attempts to Seek Council Support to Engage the Community

- **Opal has for nearly two years sought Council support to undertake community engagement** regarding the future use of 11 Cottrill Street, which is owned by the State Government.
- **Opal has acted in an open and transparent manner** in regards to what it proposes with the City.
- **The City's Officers have previously recommended support** to engage the community in relation to the future use of the site, but this was not approved by the elected members.



# Engagement with Elected Members

- Opal (as local property owner, ratepayer and service provider) invited Ward Councillors and the Mayor over a period of months Opal to meet to discuss the proposal to commence community engagement.
  - Mayor Gear met with the team (11 November 2019)
  - Cr Mair met with the team (7 February, 2020)
  - Cr Sanford refused to meet with the team
- The Team then held a briefing with all councillors outlining the proposed engagement process (12 May)



# The Petition

- **Following the briefing with Council on the proposed community engagement a petition was commenced** opposing any use by Opal and to change the zoning of the land back to POS.
- **Opal reached out to the group** who were nominated as the contact points for the petition to discuss what could be proposed for the site – this offer was not taken up.



# The Surprise Rezoning Motion

- A motion is formed proposing to spot rezone the site back to Public Open Space.
- Opal as a direct neighbour and key stakeholder is not contacted about the motion – unlike others in the area.
- Opal only finds out by chance that the item is even on the Council agenda.



# Council's Own Policy on Engagement

**Council's Policy is based on the guidance from the International Association for Public Participation (IAP2) and states it has been developed to....**

***“Ensure City of Melville residents and all relevant stakeholders are provided a fair and meaningful opportunity to participate and contribute to problem solving, planning and decisions made by the Council and its staff.”***

***“This Policy **applies to Elected Members**, City of Melville staff and consultants contracted by the City and any other person/s who undertakes activities for the City. The scope is guided by Section 1.3 (2) of the Local Government Act 1995”***

***“The scope acknowledges **the role of stakeholders having a role in providing input to Council decision making processes.**”***

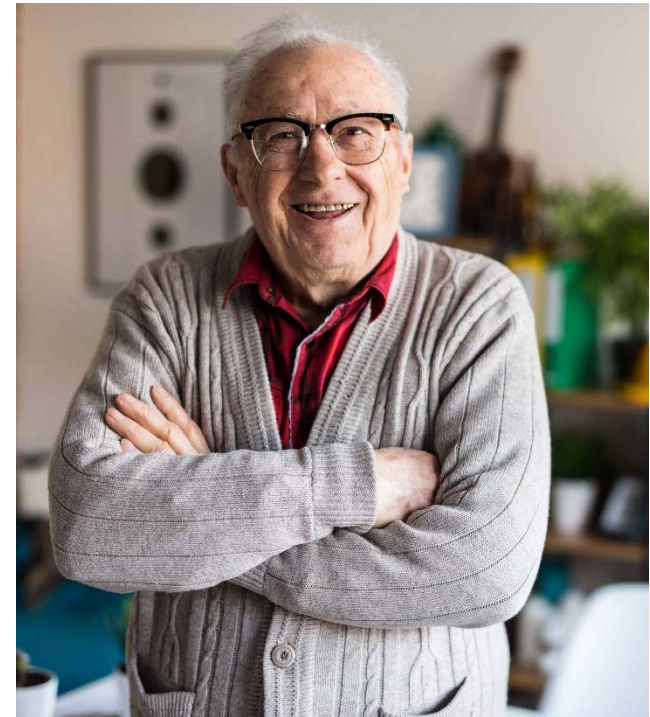


# The “Aged Friendly Melville” Plan

It states that the plan seeks to ensure  
*“An age-friendly environment that  
benefits everyone; both current and  
future generations.”*

## Key Priority – Housing

*“The City will advocate for increased  
choices of appropriate housing for old  
people.”*



# Key Questions

- **Why did Council not support community engagement on the future use of 11 Cottrill Street?**
- **Who was responsible for generating the petition, straight after Opal's briefing with Council?**



# Key Questions

- **Why was there no engagement with Opal (as a direct neighbour; ratepayer and service provider) regarding the proposed motion for the spot rezoning of the site?**
- **Why has the Council not acted in good faith and not adhered to it's own policy in regards to community engagement?**



# Opal's Request of Council

To support Opal to conduct community consultation (in association with the City of Melville, if appropriate) regarding the potential future use of 11 Cottrill Street for the provision of residential aged care services.

