

Officer Presentation

CD24/12 - Cultural Heart - Learning & Cultural Centre

Ms L Reid, Manager Cultural Services

Vision for a Cultural Heart

Melville's Library & Cultural Centre



Updated Vision

Vision for a Cultural Heart

Our vision

To create an extraordinary cultural precinct for our community.

Our mission

To create a cultural heart in the city of Melville, which:

- **Holds, nurtures and celebrates the stories of our communities;**
- **Inspires learning through exemplary programming and collections; and**
- **Acknowledges the past, examines the present, and creates ideas for the future.**

Our goals

1. **A place of generosity**
2. **A place of belonging**
3. **A place of reconciliation**
4. **A place of stories**
5. **An inclusive place**



Priority 1 : Library and Cultural Centre

Revised Business Case

2023 – Proposed Revised Business Case

The City's Main Library (including staff, digital and creative spaces)

Municipal/ Community Museum

Gallery/ Exhibition Space

Flexible Meeting Rooms/ Activity Space Room

City's Customer Service Interface – Hub and Spoke Model

JP Service

Meeting Space for Volunteering

Café

Retail Space

Basement Carpark

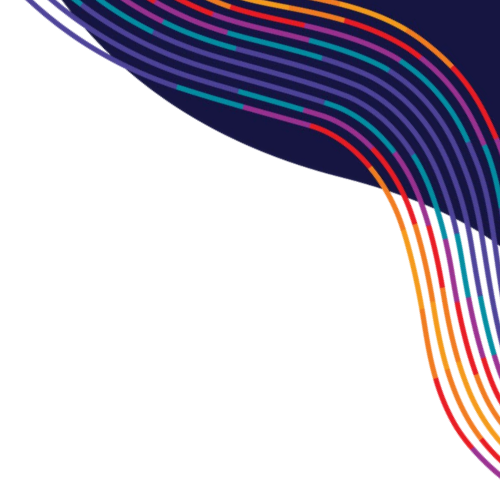
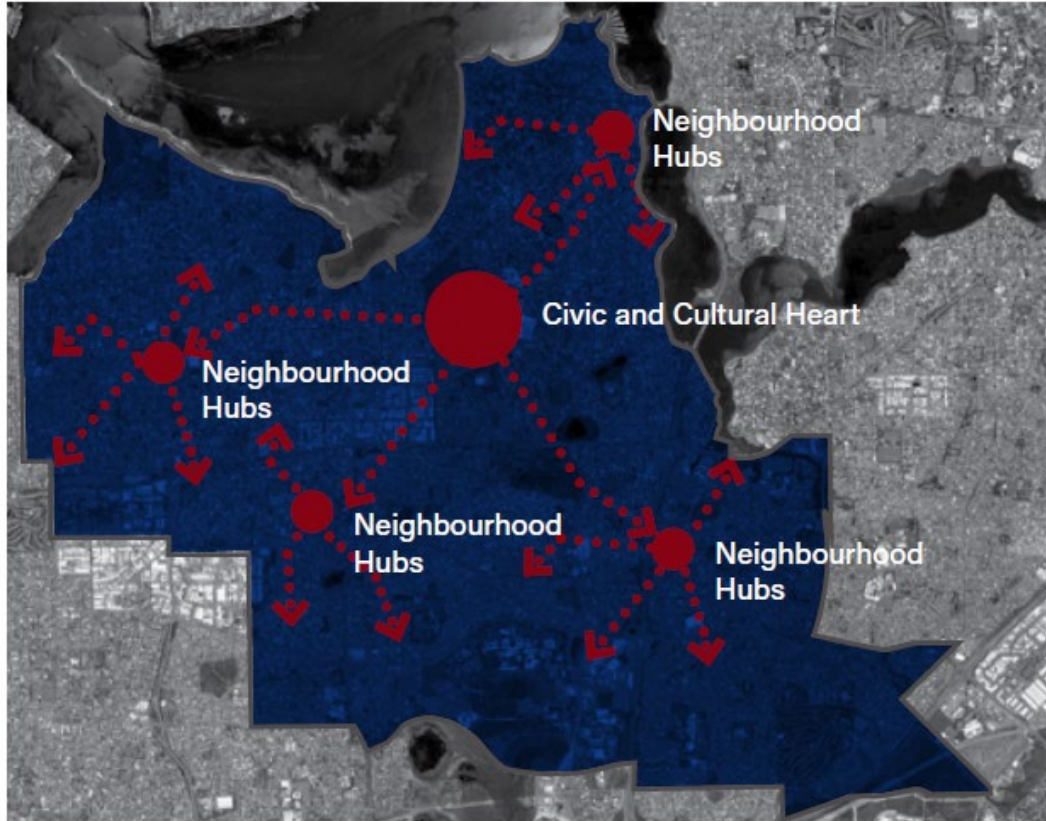
Forward Works

Main Hall and Civic High Street interface facade

Connection to Yagan Mia /Wireless Hill

Precinct Signage and Interpretation

City + Neighbourhood Exchange



Convergence

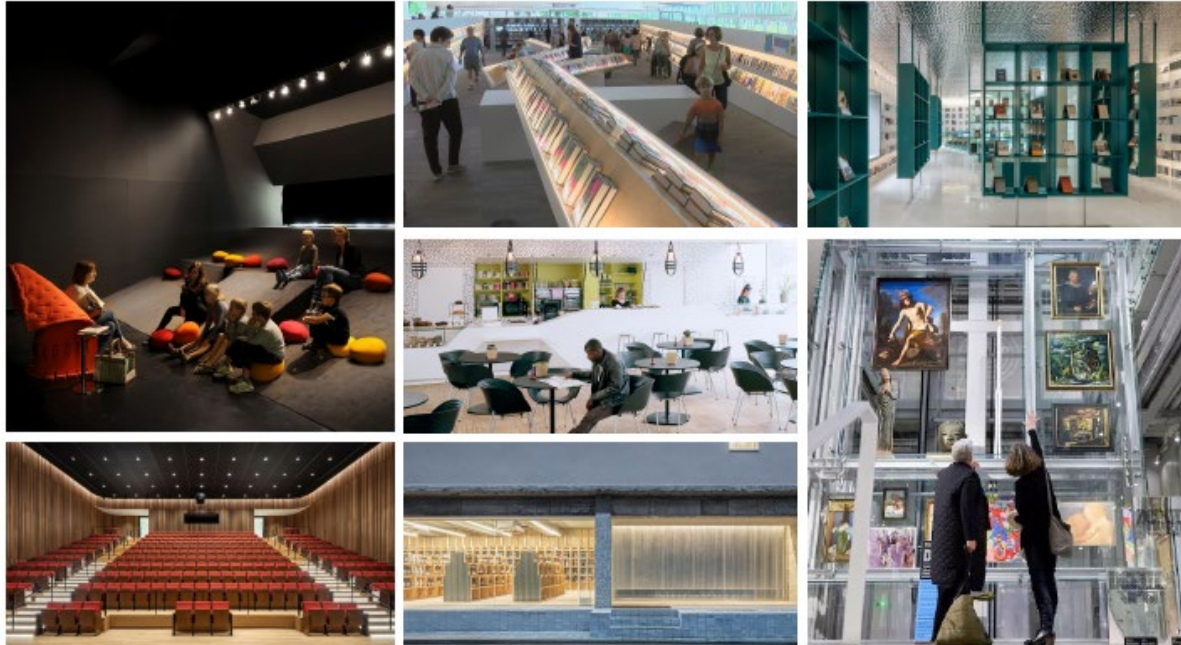
The intersection is where great things happen



4. Functionality and Build Quality

Benchmarks

Convergence : Library, exhibition, theatre, maker space, food/beverage



9. Community

Convergence of spaces

Library + Cafe + Exhibition Spaces + Museum & Interpretation + Creative & Making Spaces + Theatre / Performance



4. Functionality and Build Quality

Exterior Benchmarks

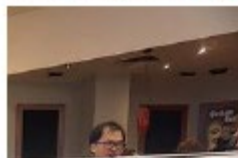
ICONIC CONTEMPORARY ARCHITECTURE



6. Amenity

BENCHMARKS

Innovation & Technology
Interactive screens, immersive technology, 3D printing, learning with VR and AR



6. Amenity

BENCHMARKS

Flexible layouts and adaptive furniture



5. Sustainability

Facade Screening

The north, east and western facades are cloaked with a perforated metal screen. This not only adds to the tree canopy narrative of the design concept, but also acts as an effective exterior sun screening device that can reduce solar heat gains into the building whilst also not obscuring the views out.



6. Amenity

Public Plaza and connection to nature

View from the north west corner looking south to the plaza



7. Legibility

Defined Entries + Pedestrian Links

SOUTHERN

The entry to the library is accessed from the south east corner. This aligns to the new High Street, connects to the car park to the south.

PLAZA ENTRIES

A main entry to the middle of the northern facade acts as a secondary entry off the central plaza. Depending on time and weather, the entry northern facade can open up to create a barrier free indoor/outdoor experience.

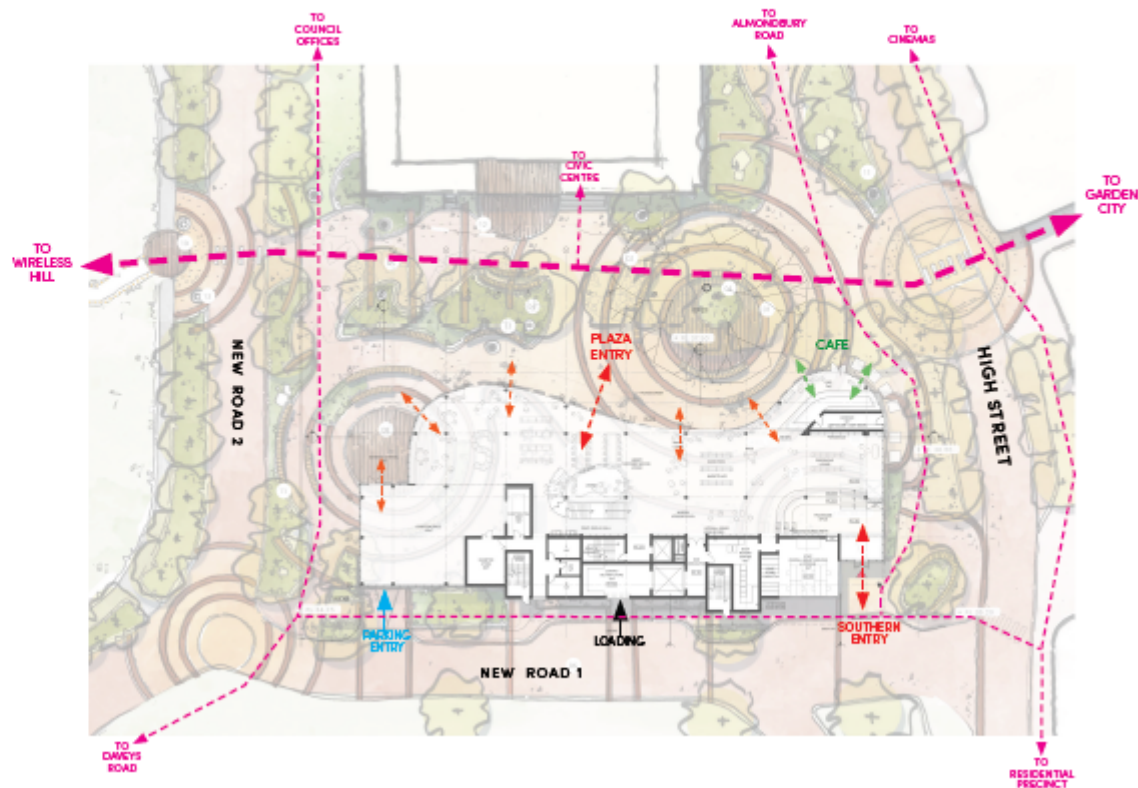
Cafe and ground floor exhibition spaces can also open up to the north and connect to the central plaza

PARKING

Access to the underground car park is via an entry ramp in the south west corner. This car park contains parking for visitors, staff and bikes.

LOADING

The loading area is accessed from the southern facade directly off the central core that contains back of house areas and the service lift. This area is designed to be as discrete as possible minimising impact on pedestrian zones and public entries





ground floor / key plan
NTS

- ZONE 1:
PEDESTRIAN SPINE
- ZONE 2:
PEDESTRIAN ACCESS WAY





ground floor / key plan
NTS
 ZONE2:
PUBLIC PLAZA



LANDSCAPE ARCHITECTS
 LEVEL 1 276 MILBURY FDR WEST LEEDSVILLE WA 6007
 T: (08) 9388 9999 E: joe@jpaia.com.au

MELVILLE LIBRARY & CULTURAL CENTRE / LANDSCAPE CONCEPT
 PREPARED FOR CHRISTOU DESIGN GROUP
 MARCH 2022

C1.307
 REVE
 NTS



INDOOR / OUTDOOR LIBRARY



COMMUNITY EVENTS



MARKETS



FESTIVALS



COMMUNITY HUB



POP-UP CAFE



INTEGRATED PLAY





LEGEND

- 01 CIVIC SQUARE WITH INTERNAL STAIRS AND SEATING ELEMENT WHICH PROTECTS THE SEATING BY CALCIPUS.
- 02 RECIPIENT FEATURE PLANTING BANDS FORM THREE ZONES WHICH DEFINE THE PRIMARY CIVIC SPACE AND PRECINCT CONNECTIONS BEYOND.
- 03 THE NODES CONNECT THE CULTURAL PRECINCT AND FORM A PEDESTRIAN SPINE BETWEEN WIRELESS HILL, THE CULTURAL CENTRE AND GARDEN CITY.
- 04 THE 3 NODES AND RECIPIENT BANDS ARE INSPIRED BY AND REPRESENT THE FOLLOWING:
 - THE TREE / GROWTH RINGS
 - WIRELESS HILL (MEDIA WALLS AND ROOFS)
 - MEETING AND COMMUNICATION PLACE
 - A TIME LINE OF THE SITE AND HISTORY OF THE AREA.
- 05 PLANTING BANDS RELATE THROUGHOUT THE SITE, WITHIN BUILD FORM AND GARDEN BED AREA, INSPIRE THE PRECINCT.
- 06 RETAINED AND PROTECTED SEATING TREES.
- 07 THE GALLERY / INTERACTIVE ART & RECREATIONAL PLAY ELEMENTS ALONG PEDESTRIAN AXIS WITH SEATING OPPORTUNITIES.
- 08 LANDSCAPE / STREETSCAPE SPANDED WITH BENCH SEATING AND MAIN GARDENS.
- 09 PLANTING BANDS CONTINUE INTO THE SECOND FLOOR OF THE BUILDING, CREATING A SEAMLESS INTEGRATION BETWEEN LANDSCAPE AND ARCHITECTURE.
- 10 OUTDOOR EXHIBITION AREA / STAIR WITH RECIPIENT INTEGRATED SEATING ELEMENT.
- 11 INTERNAL CAFF AREA WITH INTEGRATED SEATING.
- 12 OUTDOOR SPACE LEADING UP TO WIRELESS HILL AREA.
- 13 PROPOSED GARDEN BED AND TREE PLANTING.
- 14 INDOOR/OUTDOOR INTEGRATED STAIR WITH AMBITIOUS SEATING.
- 15 PUBLIC ART - TOTEM POLES SCATTERED THROUGH THE MAIN PEDESTRIAN PATH FROM WEST TO EAST.
- 16 FOOTPATH CONNECTION TO SEATING ESTABLISHED PATH TO WIRELESS HILL, TO MINIMIZE DISTURBANCE.



LANDSCAPE ARCHITECTS

LEVEL 5 278 RAILWAY FOR WEST LEEDSVILLE WA 6007
T: (08) 9388 8888 E: info@plann.com.au

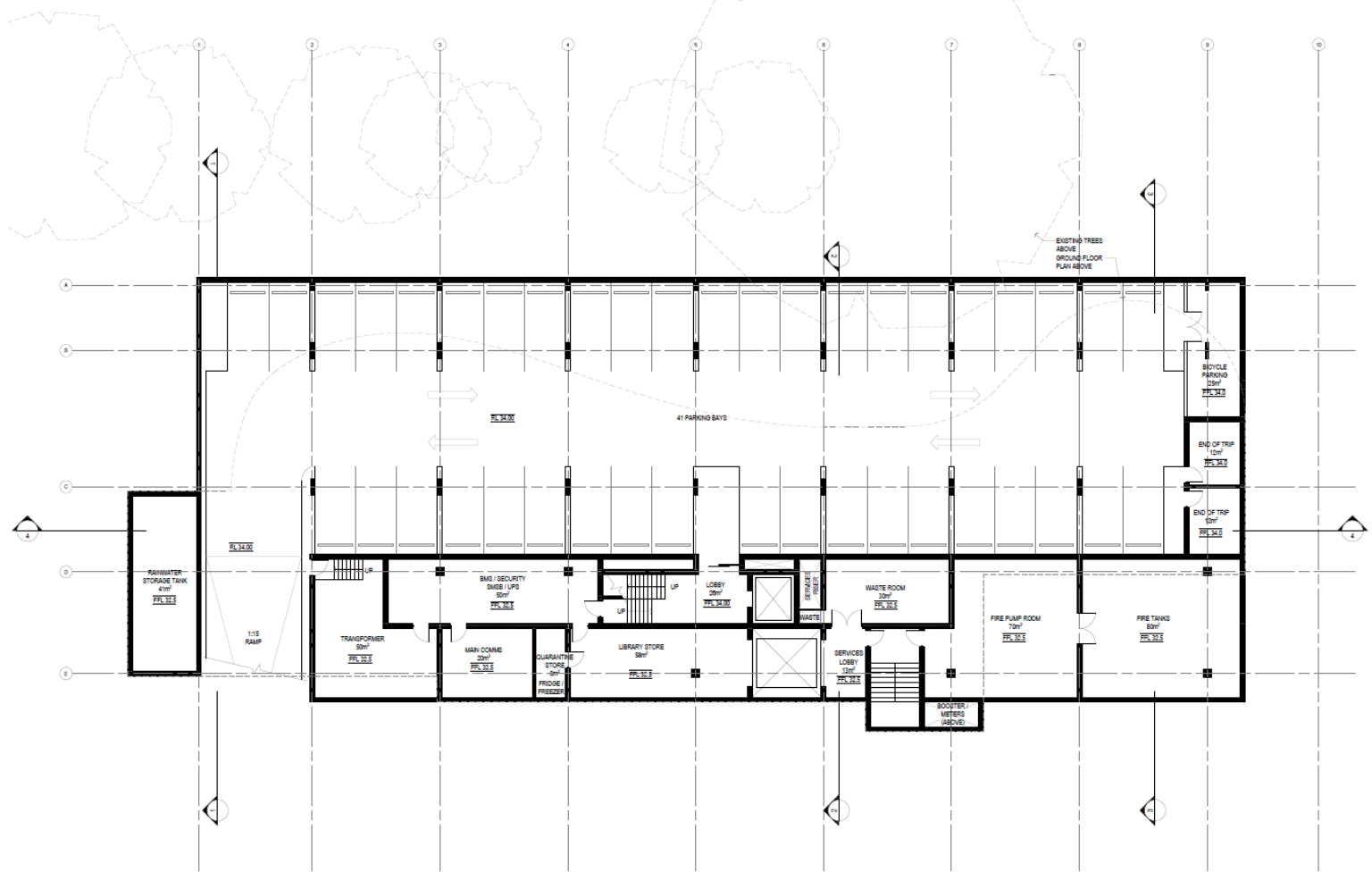
MELVILLE LIBRARY & CULTURAL CENTRE / LANDSCAPE CONCEPT

PREPARED FOR CHRISTOU DESIGN GROUP
MARCH 2022

C1.3012

REV E
1/600 @ A3





BASEMENT FLOOR PLAN

1:100 @ A1

OPTION 4 - WITH BASEMENT PARKING

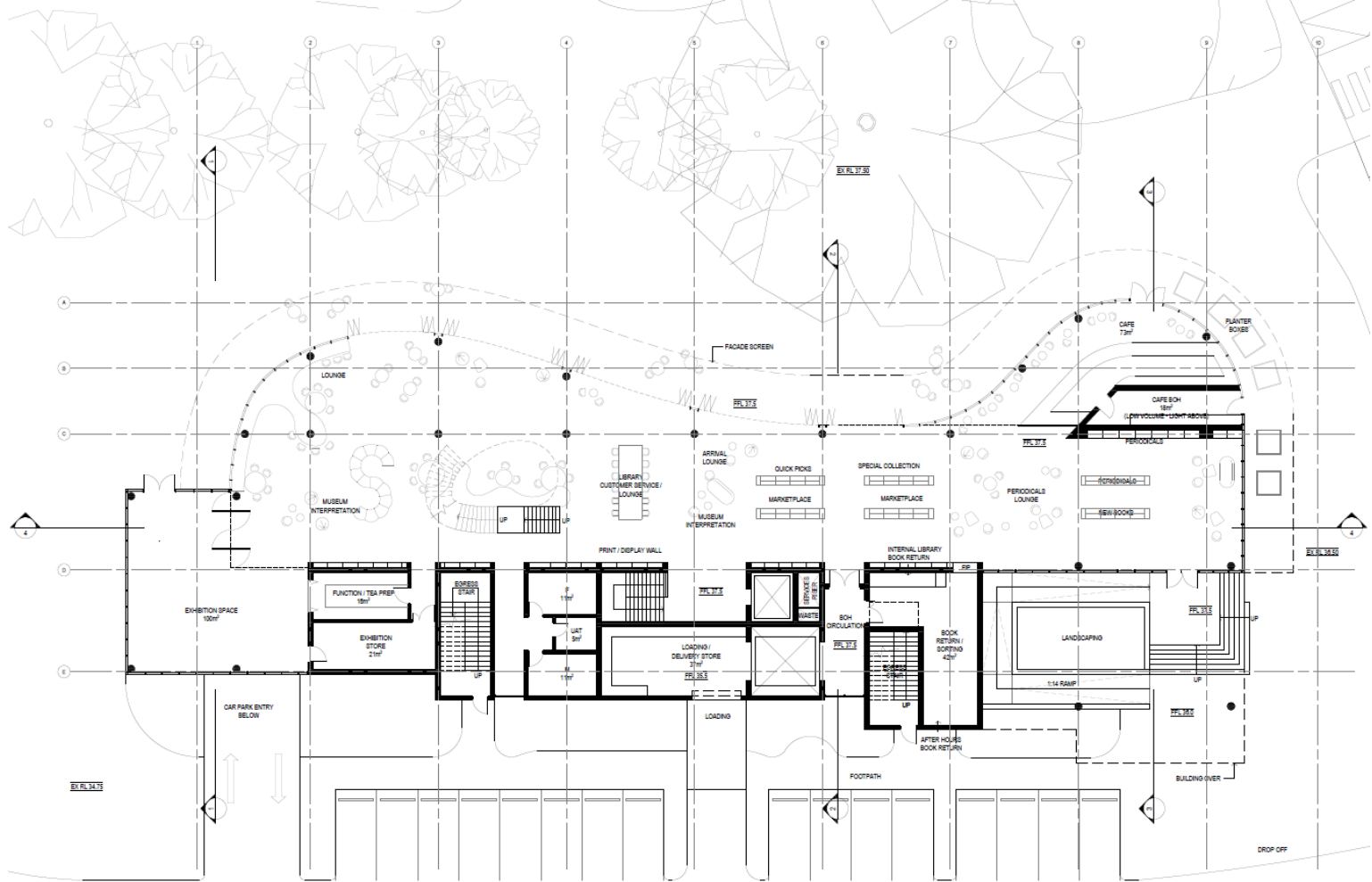
04.10.2023



MELVILLE LIBRARY & CULTURAL CENTRE

CHRISTOU

ARCHITECTURE / URBAN DESIGN / INTERIOR DESIGN



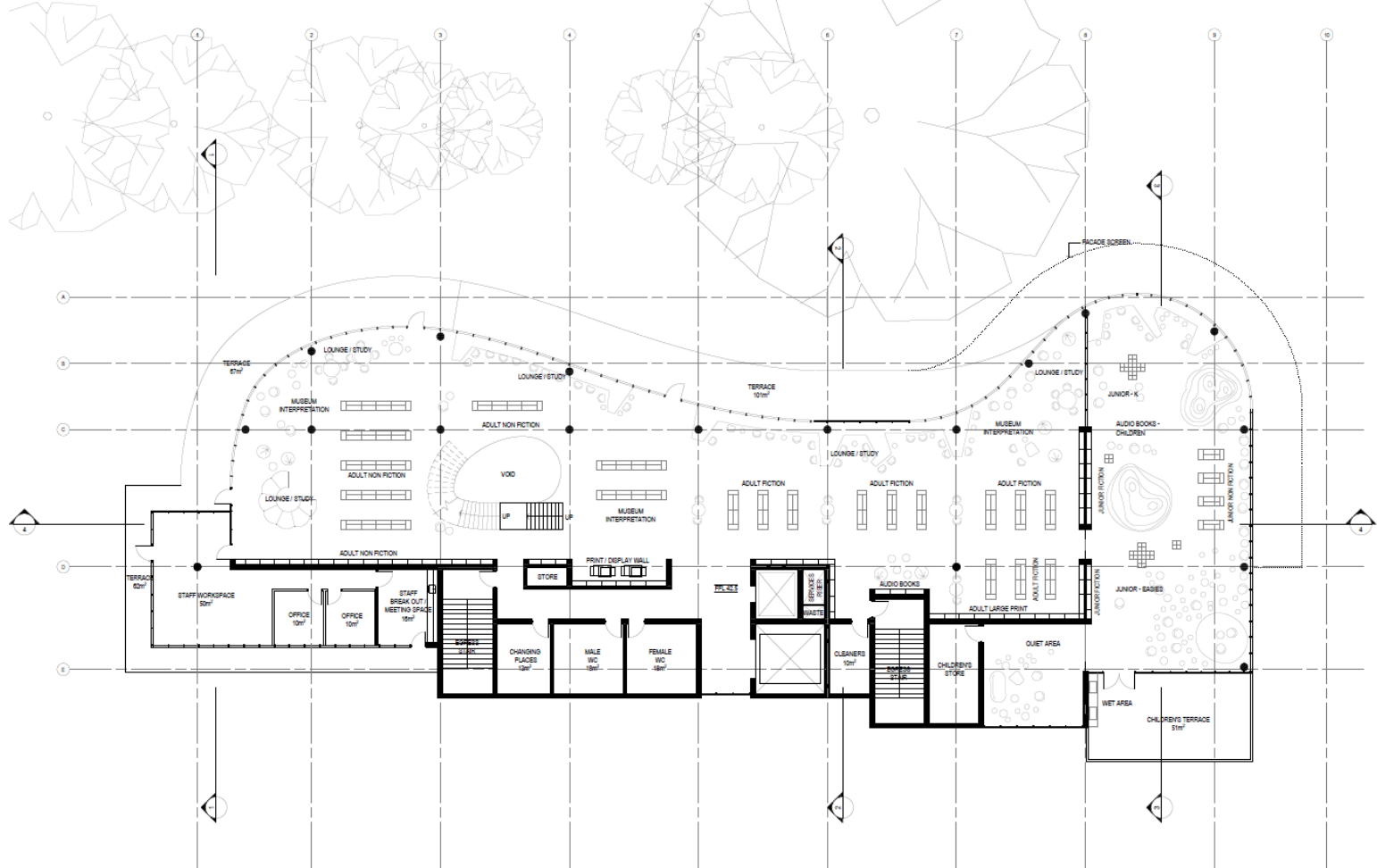
GROUND FLOOR PLAN
 1:100 @ A1
 OPTION 4 - WITH BASEMENT PARKING
 04.10.2023



MELVILLE LIBRARY & CULTURAL CENTRE

CHRISTOU

ARCHITECTURE / URBAN DESIGN / INTERIOR DESIGN



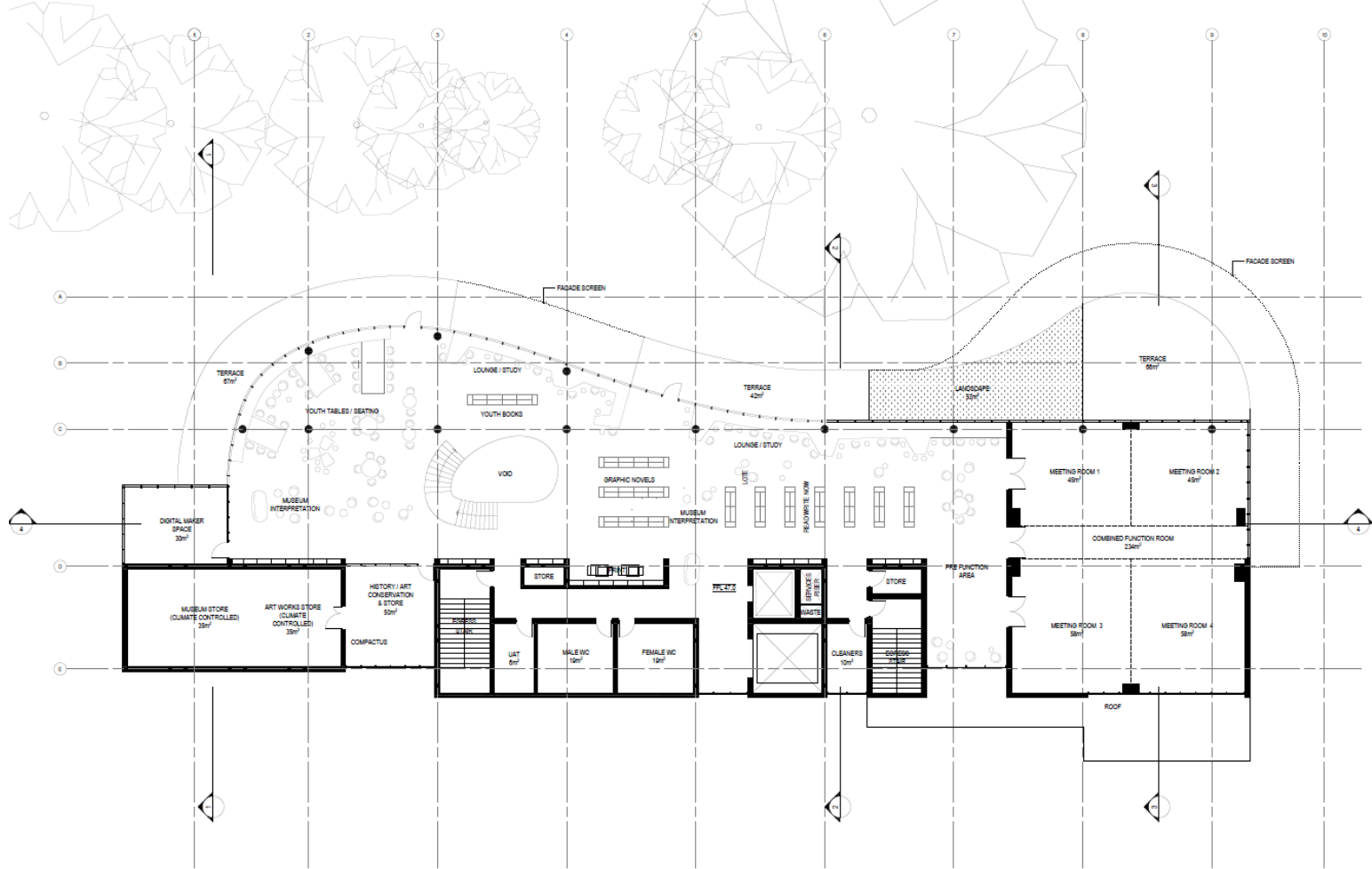
FIRST FLOOR PLAN
 1:100 @ A1
 OPTION 4 - WITH BASEMENT PARKING
 04.10.2023



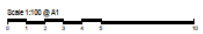
MELVILLE LIBRARY & CULTURAL CENTRE

CHRISTOU

ARCHITECTURE / URBAN DESIGN / INTERIOR DESIGN



SECOND FLOOR PLAN
 1:100 @ A1
 OPTION 4 - WITH BASEMENT PARKING
 04.10.2023



MELVILLE LIBRARY & CULTURAL CENTRE

CHRISTOU
 ARCHITECTURE / URBAN DESIGN / INTERIOR DESIGN

Updated Business Case for the Library & Cultural Centre

Officer Recommendation:

That the Council:

1. Endorse the updated Business Case for the Library and Cultural Centre; and
2. Supports the inclusion of the proposed funding model, as outlined in the updated Business Case, for inclusion in the Long-Term Financial Model and consideration in future budget proposals.

Thank you

