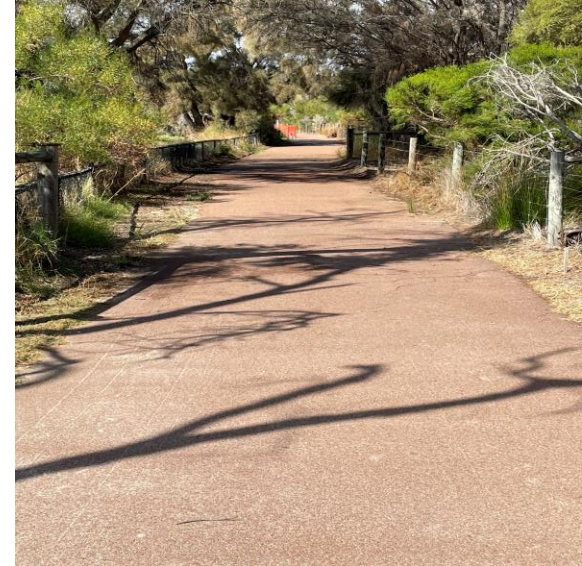


# City of Melville Deputation

by  
Dr Graham Mahony  
Resident

13 September 2022



# Purpose

Following Petition submitted 24 June 2022

Three (3) matters:

1. Location of a boardwalk
2. Foreshore restoration and vegetation
3. Public access along the river foreshore

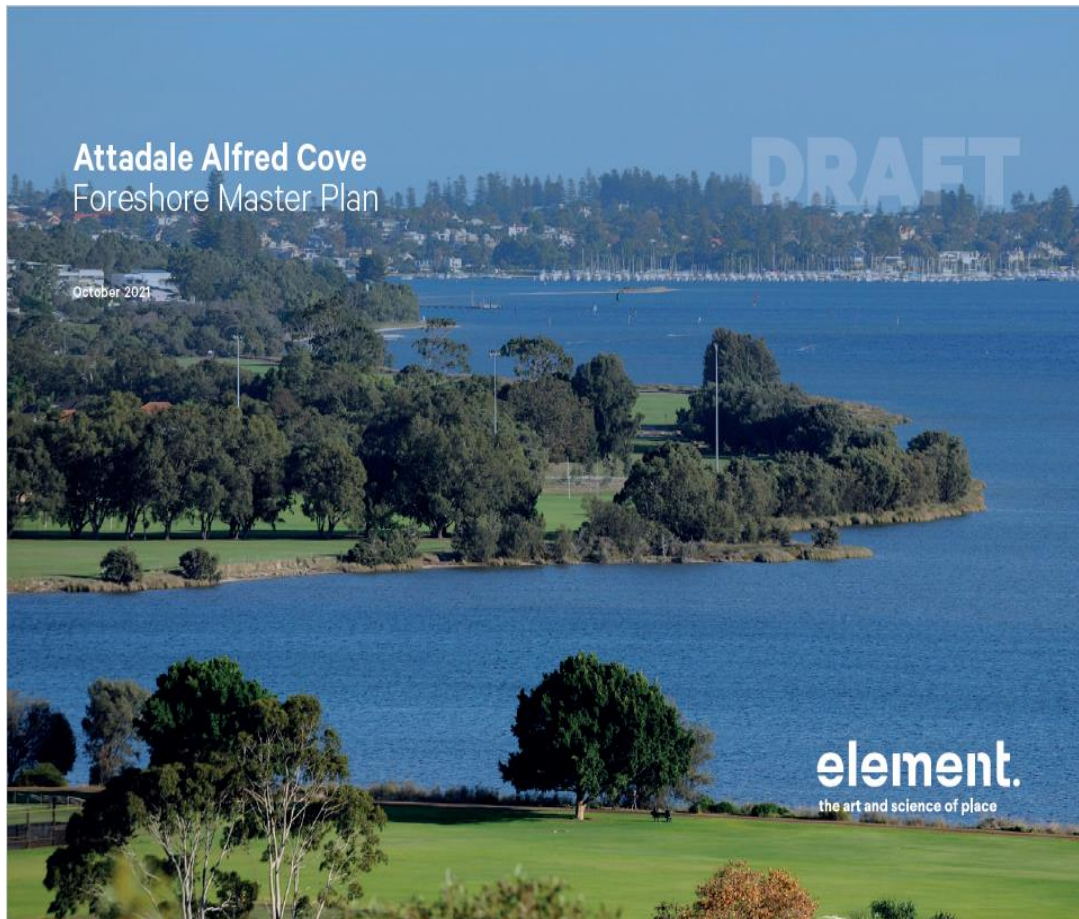
# The Area of Foreshore Being Considered



# Attadale Alfred Cove Foreshore Master Plan

(1) D3 211018, October 2021

(2) 20-539, February 2022



# What do we know?

1. Boardwalk proposed through Attadale bushland and the die-back area: \$ 1.3 Million (ABR-01)
2. Repair foreshore along this area of Attadale foreshore – A Priority – includes removal of the existing foreshore pathway: part of \$7.4 Million (ABR-02)
3. Two (2) viewing platforms: \$700k (ARB-05)
4. A foreshore boardwalk as part of Attadale reserve foreshore rehabilitation: \$1.6 million (ABR-03)

Note: all cost quoted are provisional.



# Propose Boardwalk Alignment (1 of 2)

Note: the boardwalk could begin along the pathway



# Proposed Boardwalk Alignment 2 of 2

Note: the boardwalk continues along the dieback area to the wet dog/wind surf area



# Objections from DBCA to the proposed foreshore boardwalk

1. The cost for such a walkway would be excessive.
2. Boardwalk would need to have a lifespan of up to 50 years.
3. Trees cannot be removed from the bushland area.
4. The buffer to the river edge is not sufficient.
5. Vegetation will not grow under an elevated boardwalk.
6. The boardwalk would end up over water due to sea rise from now to 2100.
7. Riverfront is susceptible to prevailing winds and wave surge during storms.

# Considering the objections

1. Riverside boardwalk – much less vegetation removal
2. Bushland/dieback boardwalk – vegetation removal, construction damage, spread dieback
3. Viewing platforms on river – riverside boardwalk: no vegetation removal; from the bushland boardwalk: serious vegetation removal
4. Areas all about same elevation – equally subject to sea rise
5. Existing pathway – use for construction and planting foreshore vegetation (buffer)
6. Bush Forever – removal of vegetation to build bush boardwalk v's foreshore boardwalk
7. Current buffer to foreshore pathway 21-22 m (east); 6-7m damaged section

- **The issue is not the boardwalk, the issue is where it is *located***

# Boardwalk Design

DBCA's 50-year boardwalk life depends on:

- Design
- Materials
- Location
- Through-life-support

Other considerations:

- Elevated platform 1.2 to 1.5 m
- Foreshore boardwalk approx. 350m
- Bushlands contoured boardwalk more than 350 m
- *AS 1428-2009 General requirements for access* e.g. wheelchairs

# Climate change

“The projected global sea level rise by 2100, including 'scaled-up ice sheet discharge', is between approximately 0.2 to 0.8 m”.

- Reference: *Sea Level Change in Western Australia - Application to Coastal Planning*, Charlie Bicknell, Department of Transport Coastal Infrastructure, Coastal Engineering Group, Feb 2010, p.12 AR4 Intergovernmental Panel on Climate Change Fourth Assessment.

# Foreshore pathway – brief history (1)

- A decade ago:

Two historic photos of the original pathway on the foreshore from the existing pathway/boardwalk to the dog wet area during demolition (c. 2008).



# Foreshore pathway – brief history (1)

- A decade ago:

**Protection barriers being installed by DBCA/DEC on shoreline between the boardwalk and dog beach** (Photos were taken 26 May 2014 just before sun-up)



# Foreshore pathway – brief history (3)

- A decade ago: The Second Barriers deteriorated



The-state-of-the-barrier-at-August-7,-2019.¶



¶ PLEASE-NOTICE-(2019-Aug-07)-the-dogs-in-this-area-are-in-the-Marine-Park-in-violation-to-the-DBCA-sign-at-the-dog-beach-prohibiting-dogs-entering-there.¶

# Foreshore pathway – brief history (4)

- The barriers removed at 8 June 2021:

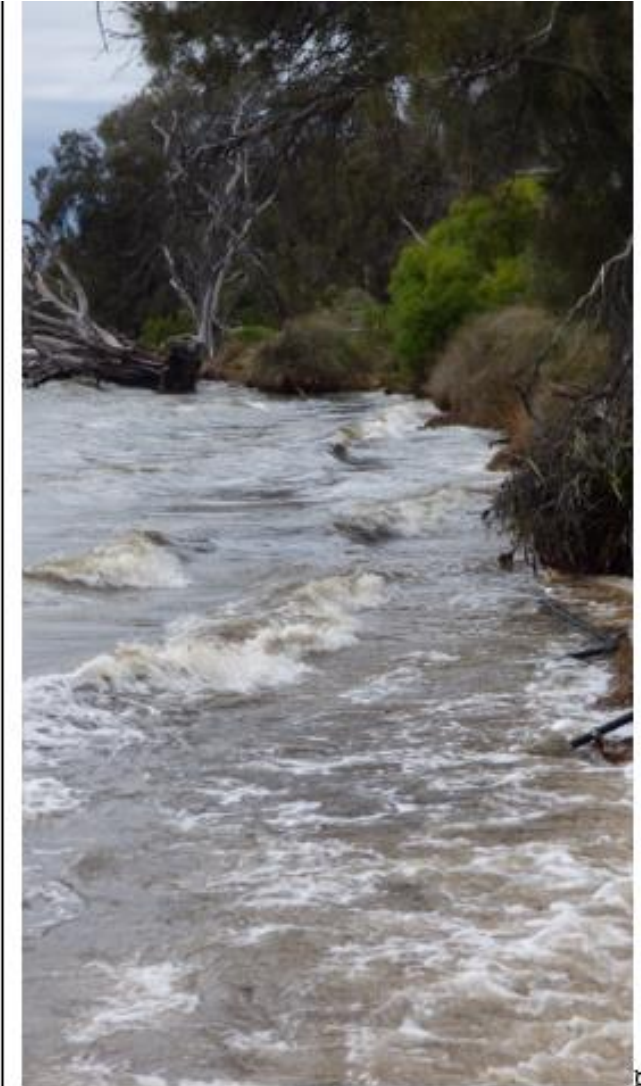


13/09/2022

At 9 June 2021 The aftermath -- Sedges undermined washing into the river

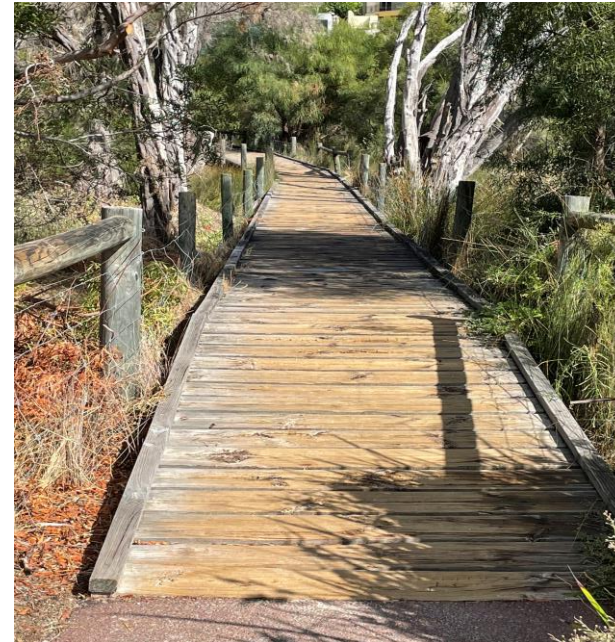
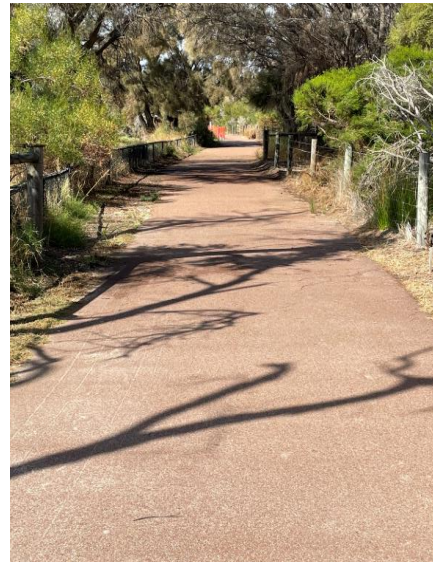


Deputation 18 September 2022: Dr Graham Mahony, Resident



18

# Foreshore pathway



# Foreshore pathway erosion

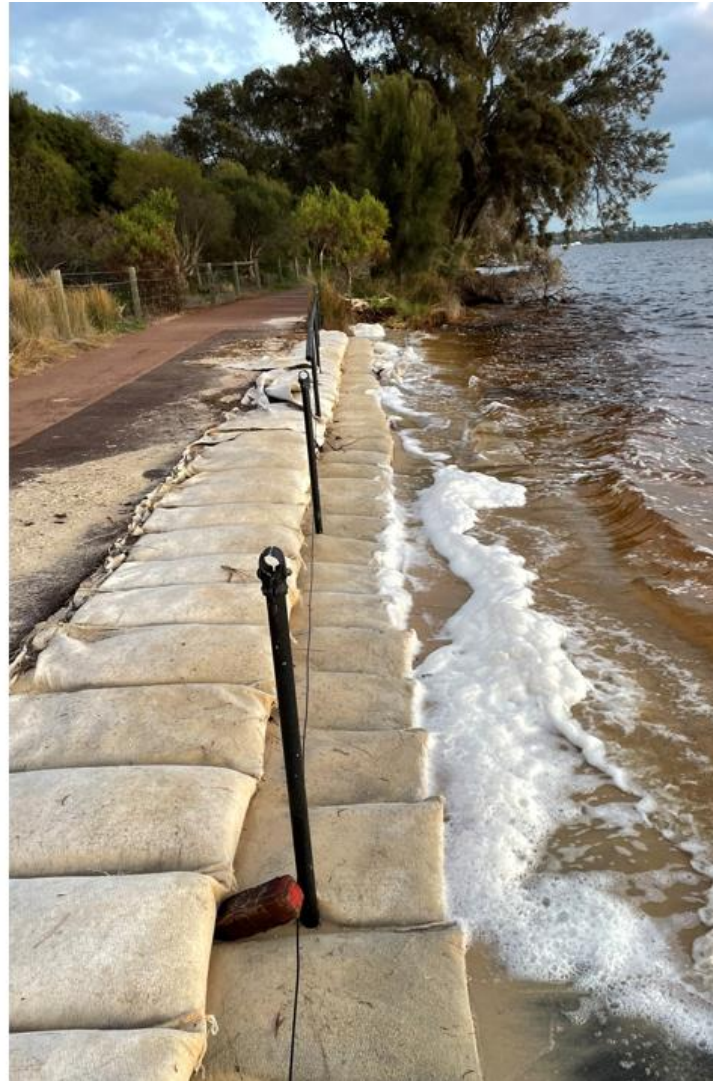


Logs removed  
severe erosion  
followed



# Damaged pathway repaired – Jul-Aug 2022

**Sandbags installed  
to protect eroded  
Pathway –  
pathway section  
restored  
(During  
installation)**



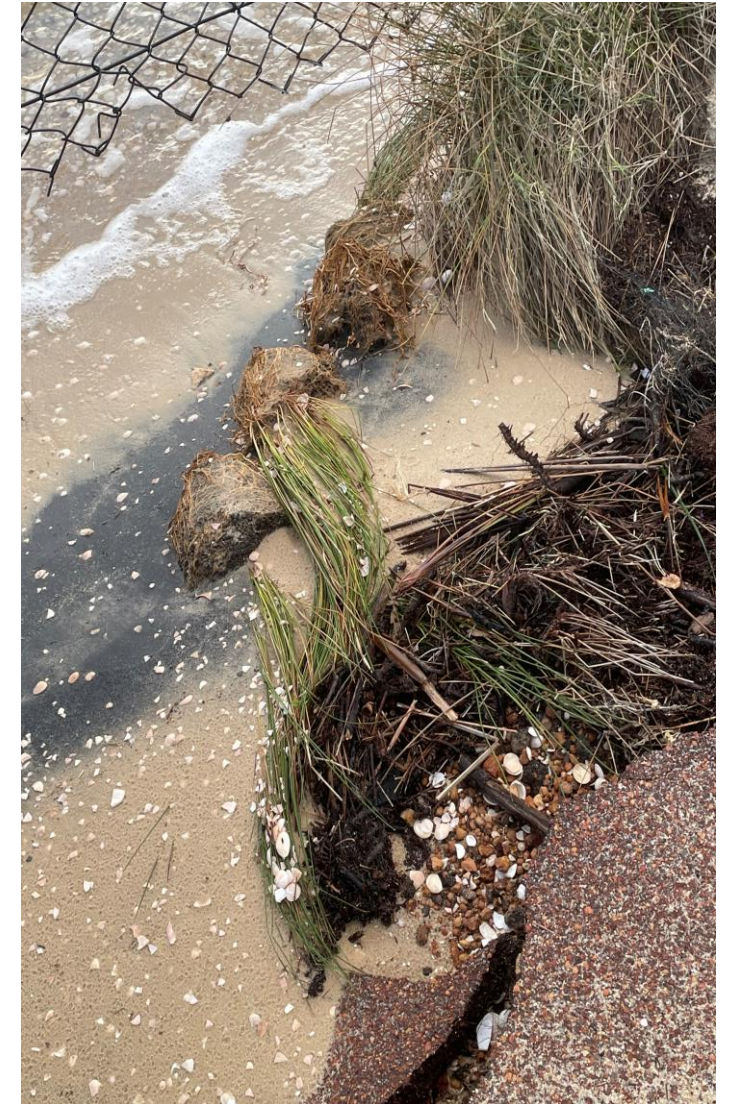
# Sedges in and out – foreshore pathway Aug 2022



13/09/2022



Deputation 13 September 2022: Dr Graham Mahony, Resident



21

# Trees help stabilise the foreshore *if* they are protected



13/09/2022

Deputation 13 September 2022: Dr Graham Mahony, Resident

- **The issue is not only the boardwalk, the issue is where it is *located* AND the *sustained foreshore remediation* along the river foreshore.**

# What is it about walking along the river foreshore?



# The proposed foreshore boardwalk

1. Access to the river one side bushland the other
2. Current pathway – access for construction, foreshore refurbishment – restoration and vegetation
3. Don't demolish the current pathway in haste
4. Viewing platforms – no vegetation removal
5. The community eye of the foreshore environment

# Summary

1. Paramount: (a) public amenity to foreshore (b) foreshore protection
2. Issue is not the boardwalk *per se* but its location
3. Restoration of vegetation is designated a 'priority' – need a coordinated workable plan of action – formulated, financed and actively managed

It is in your hands to work with DBCA to achieve these goals.

Thank you