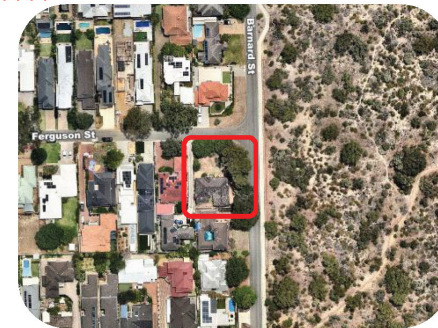


21 FERGUSON ST,
ALFRED COVE

REQUEST FOR REMOVAL OF STREET TREE

TUESDAY 13TH MAY, 2025
DA-2024-634

PHILIP
STEJSKAL
ARCHITECTURE



THE SITE CONTEXT

21 Ferguson st is located directly adjacent to west of Wireless Hill Park. Designated bush forever, the park contains excellent Jarrah and Marri woodland with understorey of Banksia and diverse ground flora.

This park is a habitat and haven for native birds, fauna and invertebrate.

21 FERGUSON ST - LINA & GABRIEL MORENO
LANDSCAPE CONCEPT

07.05.2025

EXISTING TREES

mature specimens of *Xanthorrhoea preissii*.

An extensive verge which wraps around the Ferguson St and Barnard street features an eclectic mix of trees.

This includes :

- 3no. mature *Eucalyptus maculata*,
- 2no. mature *Lophostemon confertus*,
- 1no. mature Camphor Laurel
- 1no. mature *Stenocarpus sinuatus*
- 1no. mature *Schefflera actinophylla*

The variety and canopy cover provides habitat and food for wildlife, far beyond that seen in other residential properties of this size.



View along Barnard St



View along Ferguson St



DESIGN RESPONSE

The owners of 21 Ferguson St, are embarking on the build of their 'forever' home and acknowledge and appreciate the privilege of living within such proximity to the park. The landscape design for the proposed new house is a direct response to the park and intended as an extension of the park ecosystem. By drawing inspiration from the park's vegetation character and dynamic ecology, the new contemporary native garden provides a sanctuary for the owners and local wildlife to enjoy year round.

Having inherited a collection of trees planted by previous owners and council on the verge, the design intends to nurture existing trees of value as well as improving upon and supporting the long term value of the site for the greater ecosystem. The design has been guided by these principles :

Local materials:

The garden will be water-wise and environmentally responsive with no lawns or pool. Passive drainage will be incorporated in maximise rainwater replenishment of aquifer. Local materials will be used, such as local stone with minimum processing for pavings.

Longevity :

Most of the trees are mature and some are in the later part of their expected lifespans. New younger understudies will be introduced to ensure longevity of the canopy cover.

Diversity:

Some of the existing trees are species that dominate the tree canopy of the City of Melville. The opportunity arises to add to the diversity range with alternative and less dominant species, thus expanding species diversity.

Endemic & Local species :

WA species will be prioritised to enhance and celebrate the richness of local flora. Many of these will provide habitat and food for native birds.

21 FERGUSON ST - LINA & GABRIEL MORENO LANDSCAPE CONCEPT

07.05.2025

Extract from Urban Forest Strategy Review -2024 City of Melville Report No. J22752 Adopted October 2024

Lophostemon confertus is a dominant species in the Melville urban forest.

Lophostemon are native to Queensland, and have proven to be very hardy and adapted to Perth. However, with rising temperatures and decline of soil moisture, they are likely to become stressed and require more attention to survive.

Older specimens are likely to suffer heat stress more.

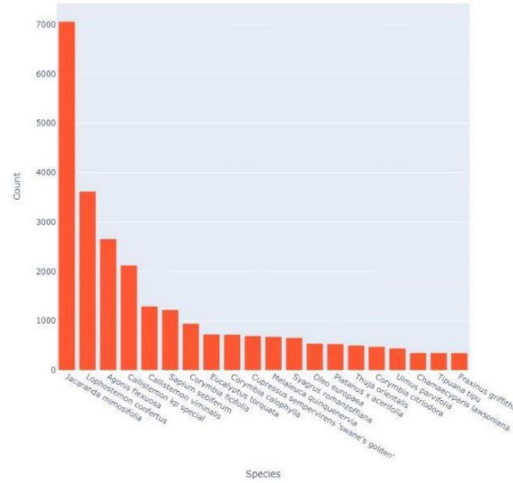


Figure 4: Top twenty species in the Melville urban forest and their counts.



Corymbia calophylla - Marri

Mature height 15h x 8w metres

Values - very high drought tolerance



Agonis flexuosa - Peppermint

Mature height 10h x 5w metres

Values - very high drought tolerance



Corymbia ficifolia - Summer red

Mature height 6h x 4w metres

Values - very high drought tolerance; ideal for native wildlife support, highly attractive tree

Lifespan 50-60 years



Corymbia ficifolia -

Mature height 15h x 5w metres

Values - very high drought tolerance; ideal for native wildlife support, highly attractive tree

Lifespan 60-70 years



Eucalyptus erythrocorys
Red capped Mallee

Mature size - 8(h) x 5(w) m

Values - very high drought tolerance; ideal for native wildlife support; highly attractive tree

Lifespan 50-80 years

DIVERSITY VALUE OF TREE - ALTERNATIVE SPECIES

21 FERGUSON ST - LINA & GABRIEL MORENO
LANDSCAPE CONCEPT - VERGE TREE

07.05.2025



PROPOSED SKETCH VIEW LOOKING EAST FROM FERGUSON STREET

21 FERGUSON ST - LINA & GABRIEL MORENO
LANDSCAPE CONCEPT

07.05.2025



21 FERGUSON ST - LINA & GABRIEL MORENO
LANDSCAPE CONCEPT - OVERVIEW PLAN

07.05.2025





- KEY
- Crazy pave Toodyay stone
 - Insitu concrete paving
 - Verge planting - low native shrubs & ground covers (less than 0.6m high) with pine bark mulch, irrigated
 - Display native planting with pine bark mulch, irrigated
 - Climbing natives on fence
 - Pine bark mulch only
 - Feature garden uplight
 - Existing tree retained
 - Proposed tree

21 FERGUSON ST - LINA & GABRIEL MORENO
LANDSCAPE CONCEPT - PLAN

07.05.2025



Anngi Tran
 Landscape Architecture Studio



SECTION A-A1

21 FERGUSON ST - LINA & GABRIEL MORENO
LANDSCAPE CONCEPT

07.05.2025



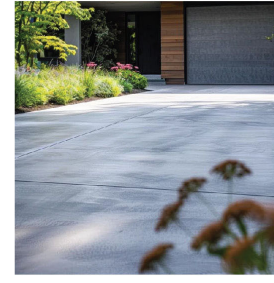
PAVINGS



Local Toodyay stone crazy paving & planter



Crazy paved steps



Insitu grey concrete



Big pots



Toodyay stone boulders



galvanised steel edging



Pine bark mulch

LIGHTS



Garden spike light - LED powdercoated

21 FERGUSON ST - LINA & GABRIEL MORENO
LANDSCAPE CONCEPT - MATERIAL & PRECEDENTS

07.05.2025





Eucalyptus caesia Magna
Silver Princess
Mature size - 8(h) x 4(w) m
Planted size - 30 Ltr
Plant 5no. as a grove



Corymbia ficifolia (grafted)
Dwarf flowering Gum
Mature size -2(h) x 2(w) m
Planted size - 30 Ltr



Hakea laurina
Pincusion Hakea
Mature size - 6(h) x 5(w) m
Planted size - 30 Ltr



Eucalyptus erythrocorys
Red capped Mallee
Mature size - 8(h) x 5(w) m
Planted size - 100 Ltr



Mixed Citrus in pots



Punica granatum
Pomegranate
Mature size - to be kept at
2.5(h) x 2(w) m
Planted size - 30 Ltr



Banksia integrifolia
Coastal Banksia
Mature size - 8(h) x 4(w) m
Planted size -30 Ltr



VERGE TREE

Corymbia ficifolia
Red Flowering Gum
Mature size -8(h) x 6(w) m
Planted size - 100 Ltr



SPECIMEN TREE

Eucalyptus victrix
Coolibah
Mature size - 8(h) x 4(w) m
Planted size -30 Litre



Eucalyptus kruseana
Bookleaf Mallee
Mature size - 2(h) x 1.5(w) m
Planted size -30 Ltr



Largerstroemia Natchez
Crepe Myrtle
Mature size - 7(h) x 5(w)
Planted size -100 Ltr



Citrus Meyer
Lemon
Mature size - Espalier
Planted size -30 Ltr



21 FERGUSON ST - LINA & GABRIEL MORENO

LANDSCAPE CONCEPT - TREE PLANTING STRATEGY

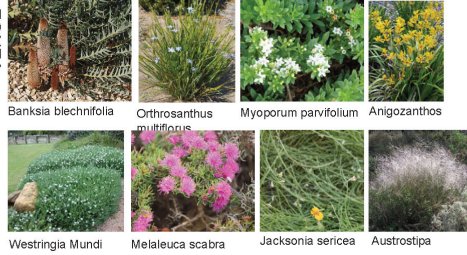
07.05.2025



SMALL ORNAMENTAL NATIVE
SHRUBS AND GROUND COVERS



VERGE



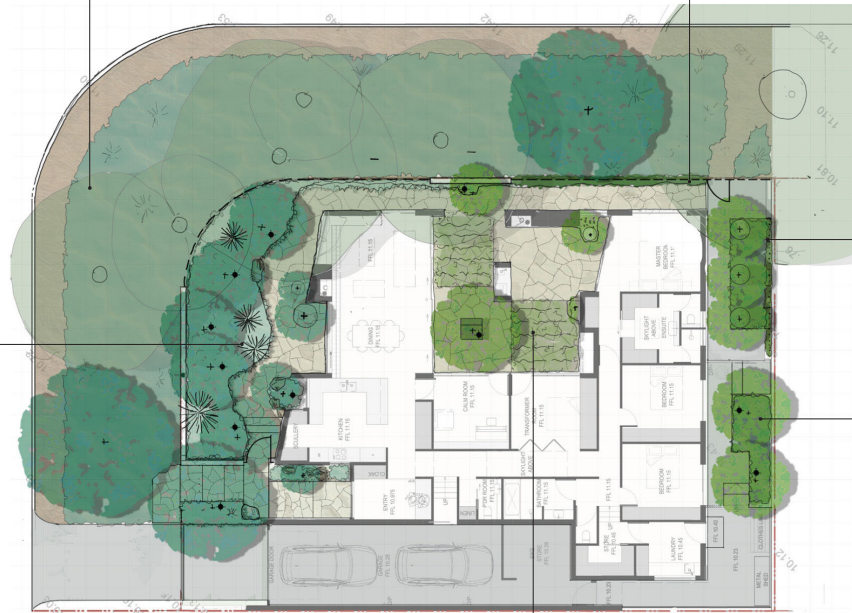
CLIMBERS ON FENCE



CLIMBER



PERGOLA



21 FERGUSON ST - LINA & GABRIEL MORENO
LANDSCAPE CONCEPT - PLANTING STRATEGY

07.05.2025



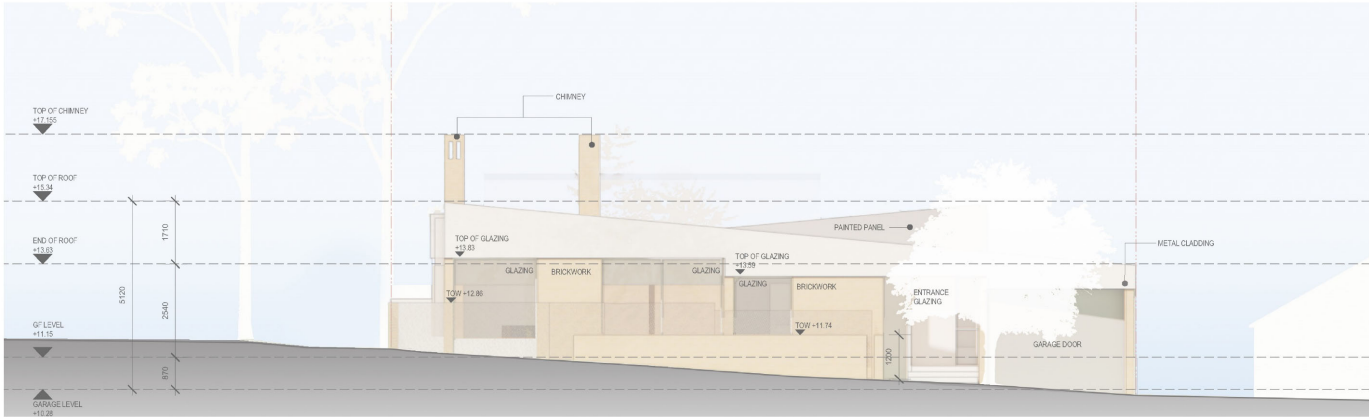
Anghi Tran
Landscape Architecture Studio

ARCHITECTURE

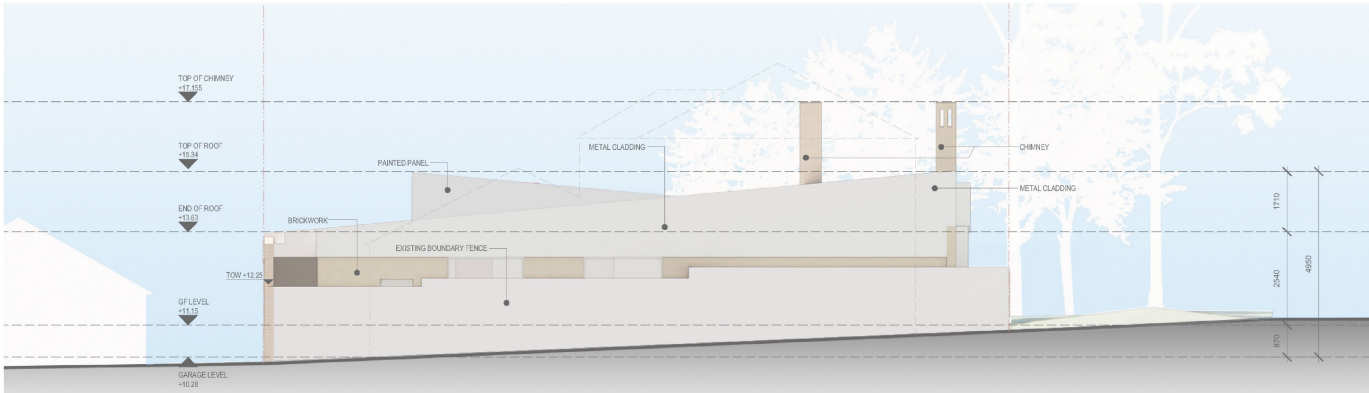
APPENDIX

PROPOSED GROUND FLOOR PLAN + ELEVATIONS

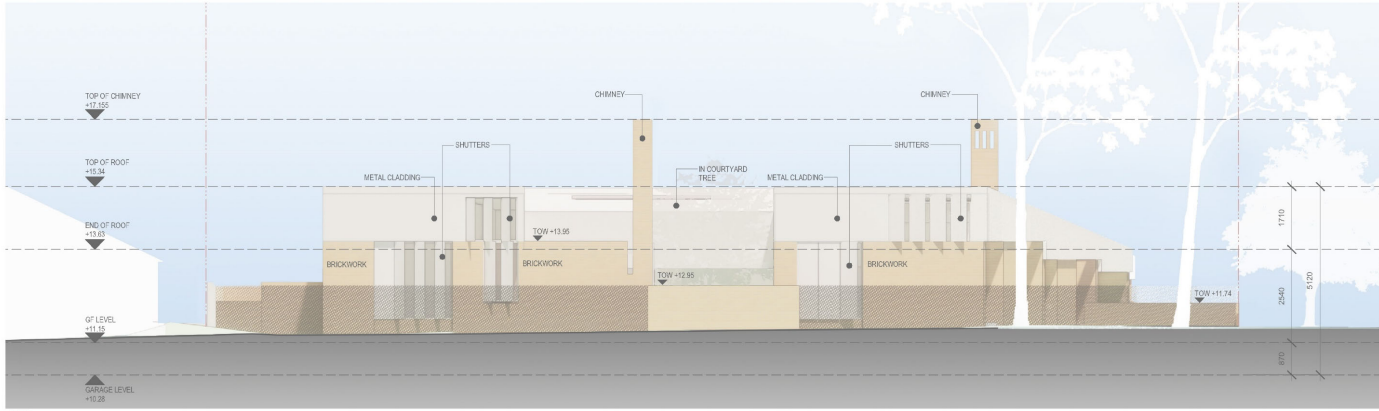
PHILIP
STEJSKAL



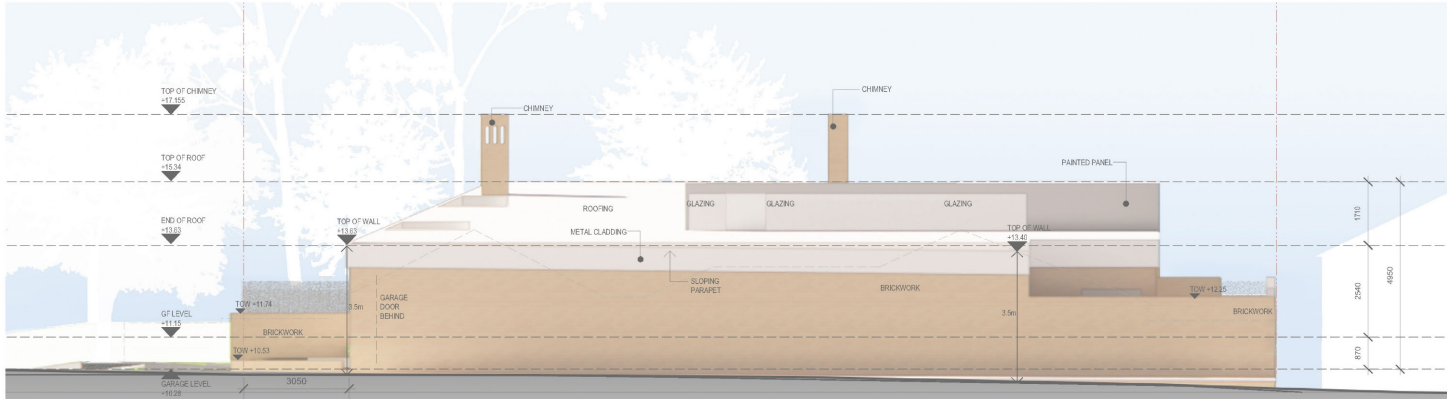
1 NORTH ELEVATION
1:100



2 SOUTH ELEVATION
1:100



1 EAST ELEVATION
1:100



2 WEST ELEVATION
1:100

WITH
THANKS

Philip Stejskal Architecture acknowledges the Traditional Owners of country throughout Australia & recognises their continuing connection to land, waters and community.

We pay our respects to them and their cultures; and to elders both past & present.

PHILIP
STEJSKAL
ARCHITECTURE