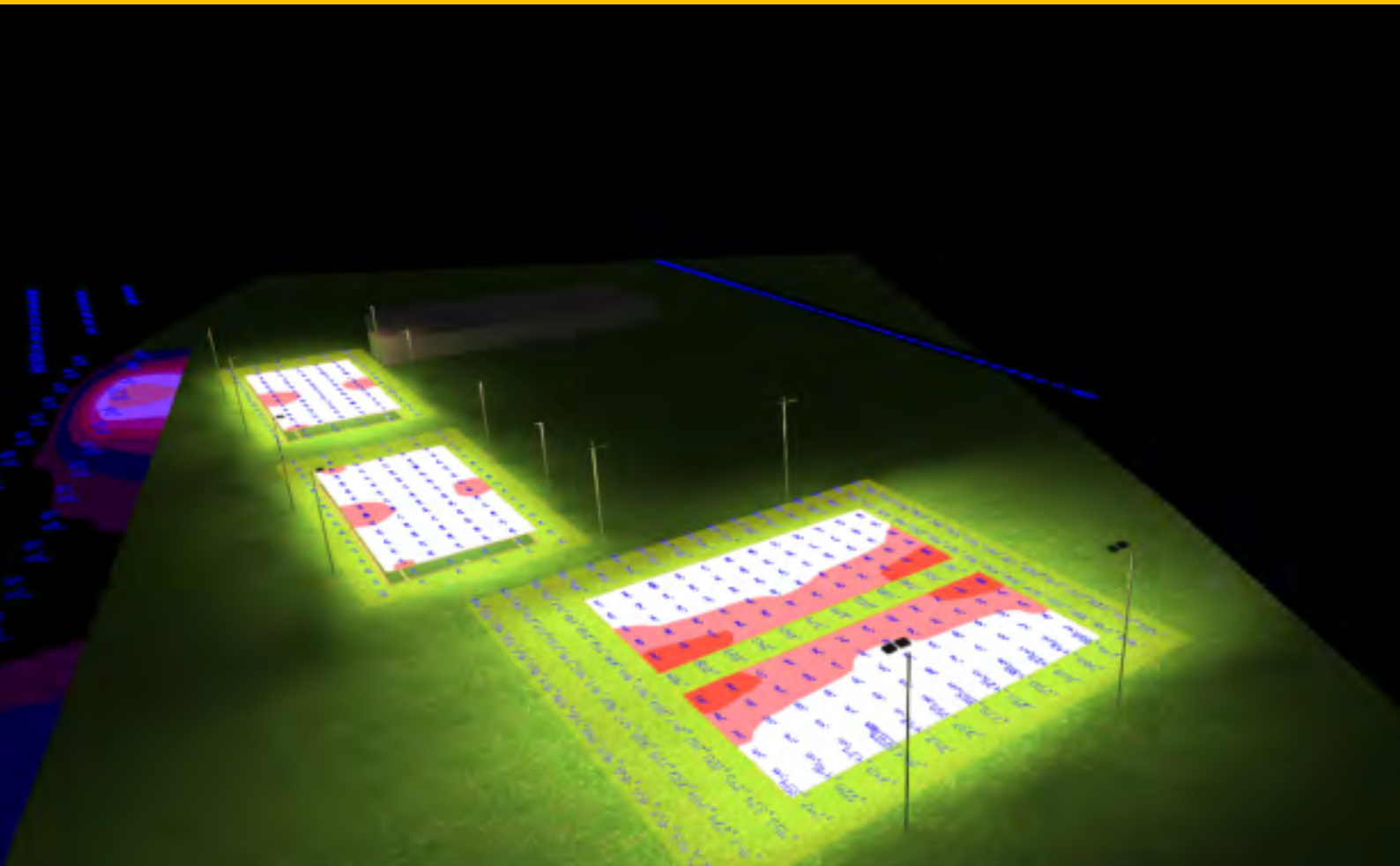




Lighting Design

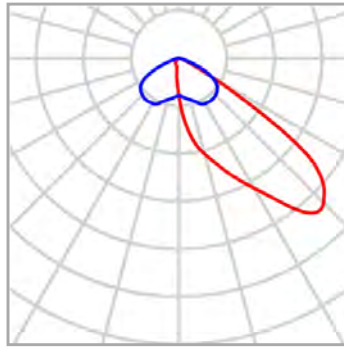
APPLECROSS TENNIS CLUB

6th January 2023



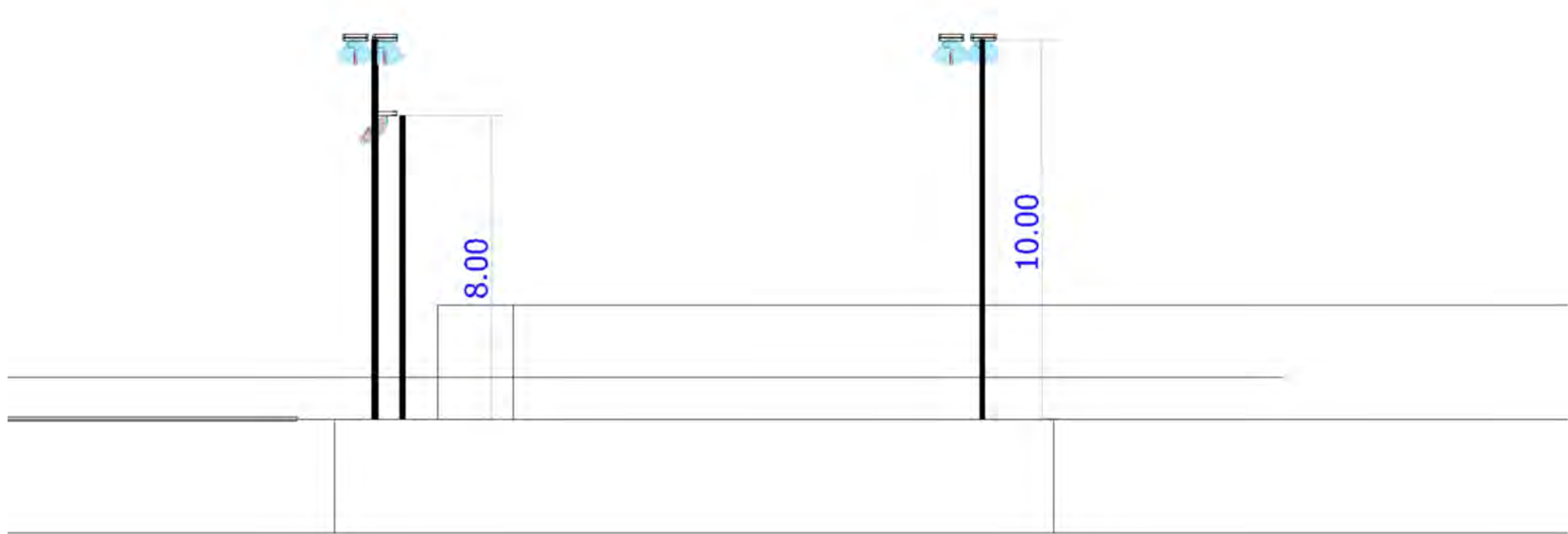
Luminaire list

Φ_{total} 903312 lm	P_{total} 7184.0 W	Luminous efficacy 125.7 lm/W
-----------------------------	-------------------------	---------------------------------

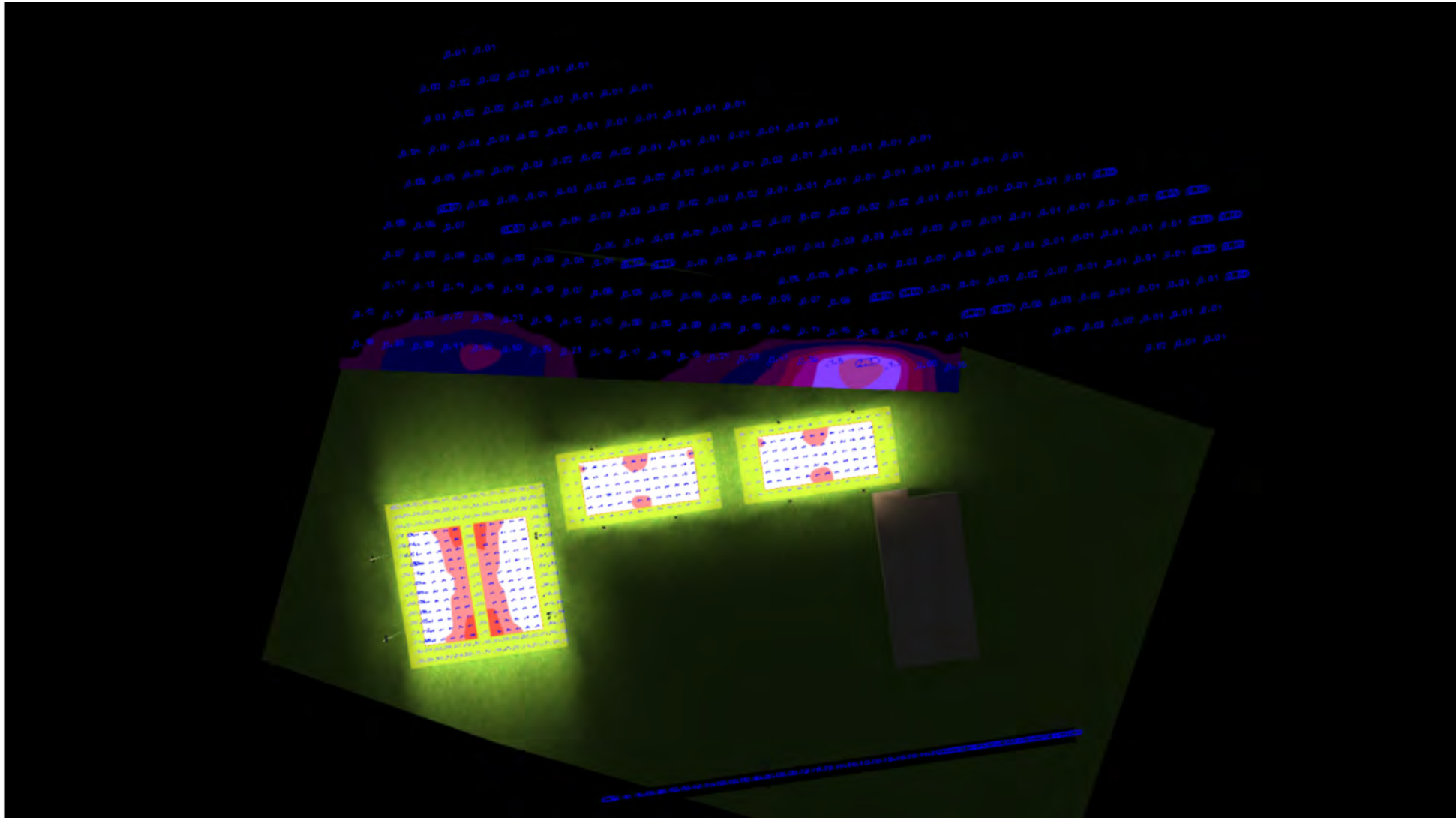


pcs.	16	P	449.0 W
Manufacturer	Vizona Pty Ltd	Φ_{Lamp}	56456 lm
Article name	Definiator Pro LED 450W - FL48-450	$\Phi_{Luminaire}$	56457 lm
Fitting	1x	η	100.00 %
		Luminous efficacy	125.7 lm/W

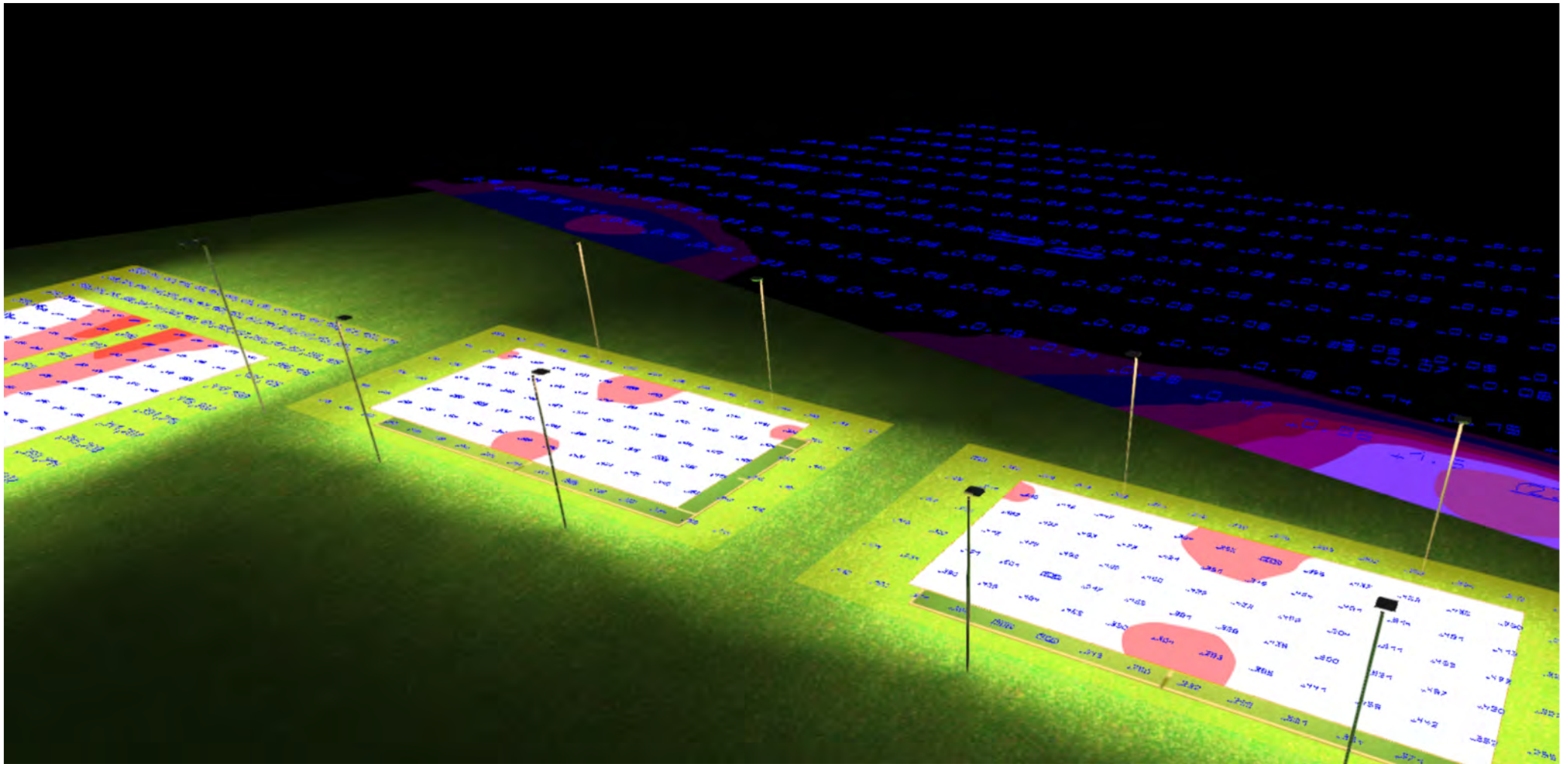
Images



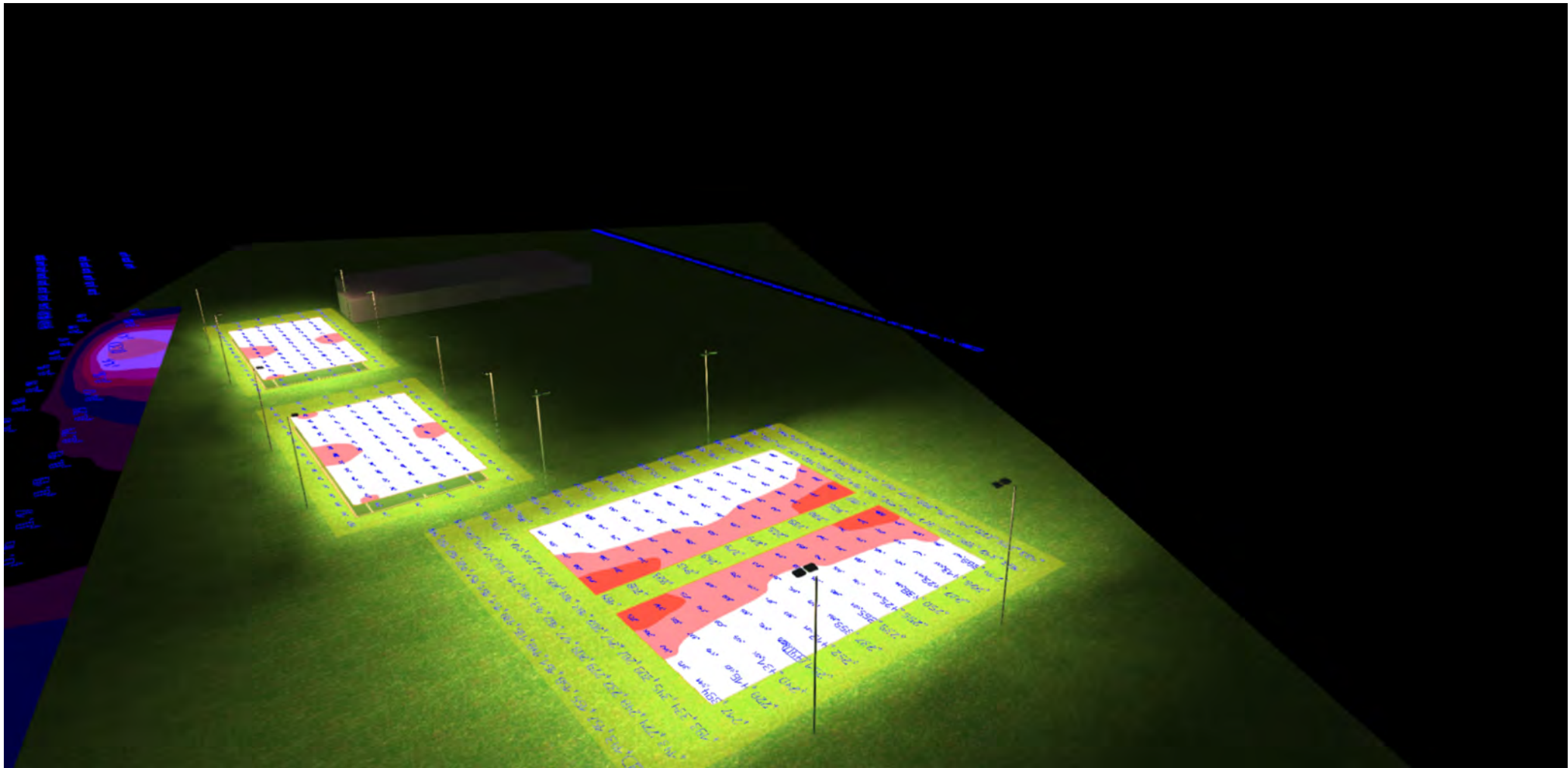
Images



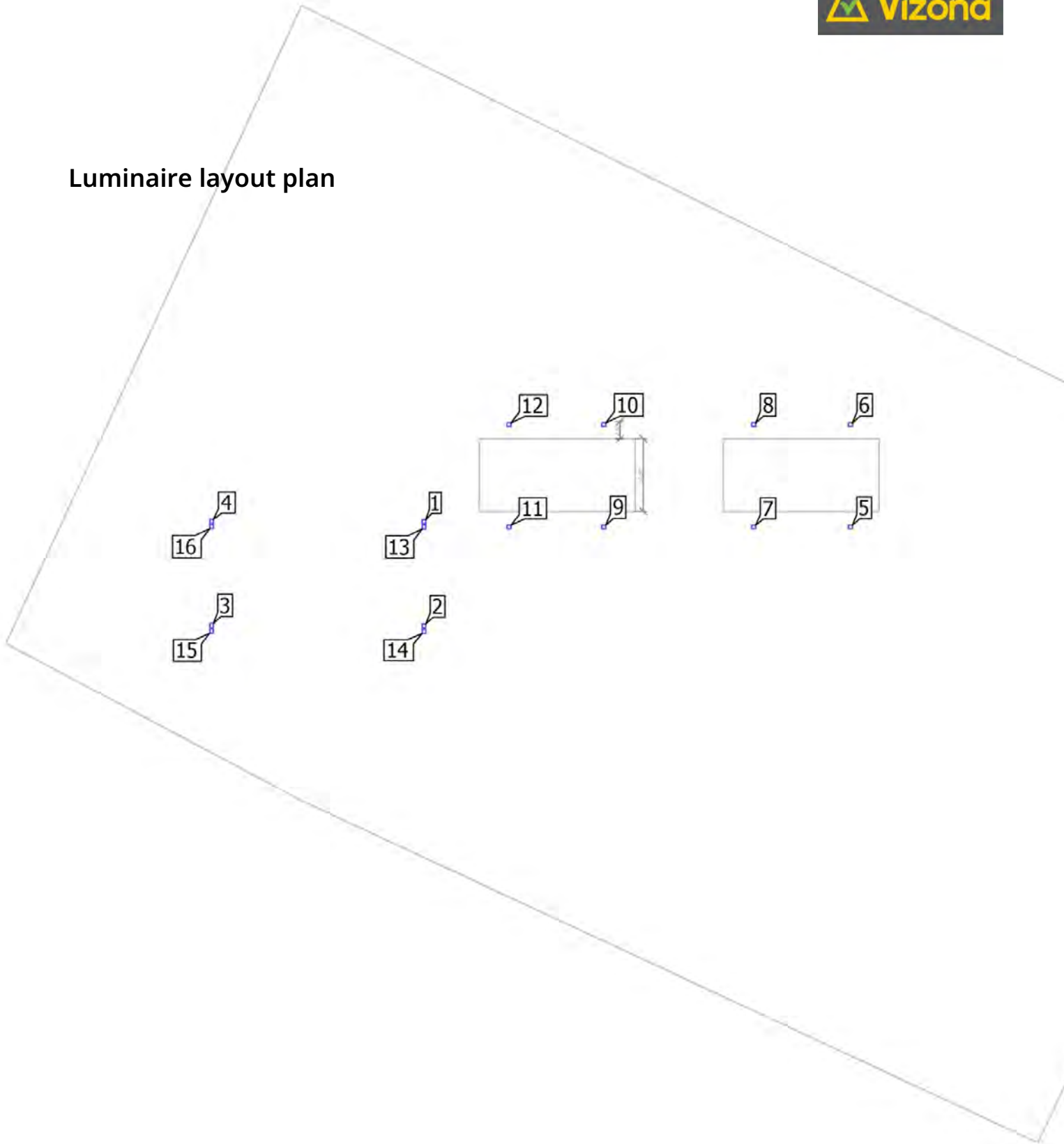
Images



Images



Luminaire layout plan



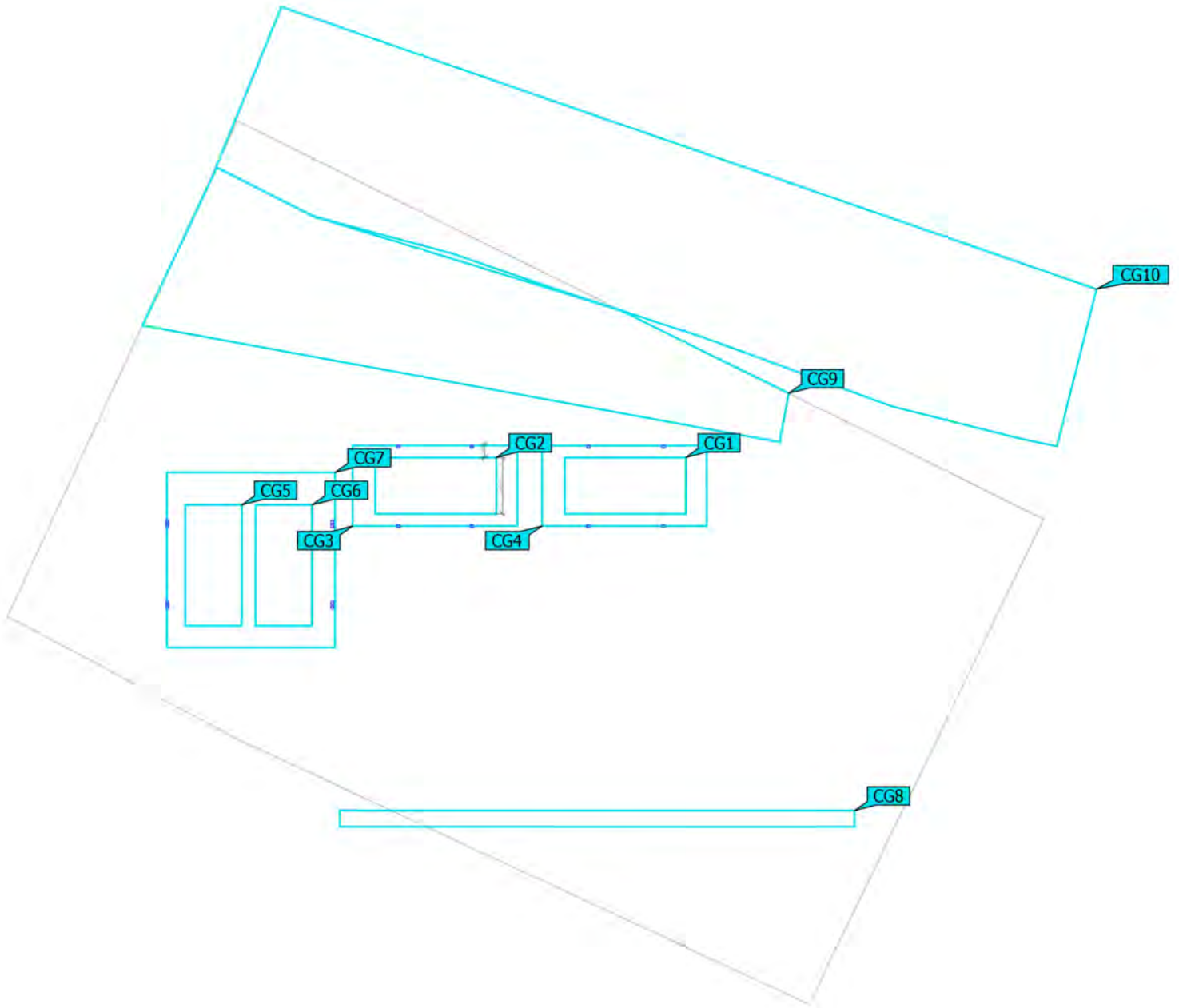
Luminaire Layout Plan

Definiator Pro LED Floodlight - 450W FL48-450

X	Y	Mounting height	Luminaire
-2.041 m	-15.863 m	10.000 m	1
-2.041 m	-31.559 m	10.000 m	2
-34.094 m	-31.507 m	10.000 m	3
-34.094 m	-15.811 m	10.000 m	4
62.264 m	-16.653 m	8.000 m	5
62.264 m	-1.218 m	8.000 m	6
47.675 m	-16.651 m	8.000 m	7
47.675 m	-1.216 m	8.000 m	8
25.062 m	-16.653 m	8.000 m	9
25.062 m	-1.218 m	8.000 m	10
10.768 m	-16.651 m	8.000 m	11
10.768 m	-1.216 m	8.000 m	12
-2.041 m	-16.646 m	10.000 m	13
-2.041 m	-32.405 m	10.000 m	14
-34.094 m	-32.353 m	10.000 m	15
-34.094 m	-16.594 m	10.000 m	16

(Light scene 1)

Calculation objects



(Light scene 1)

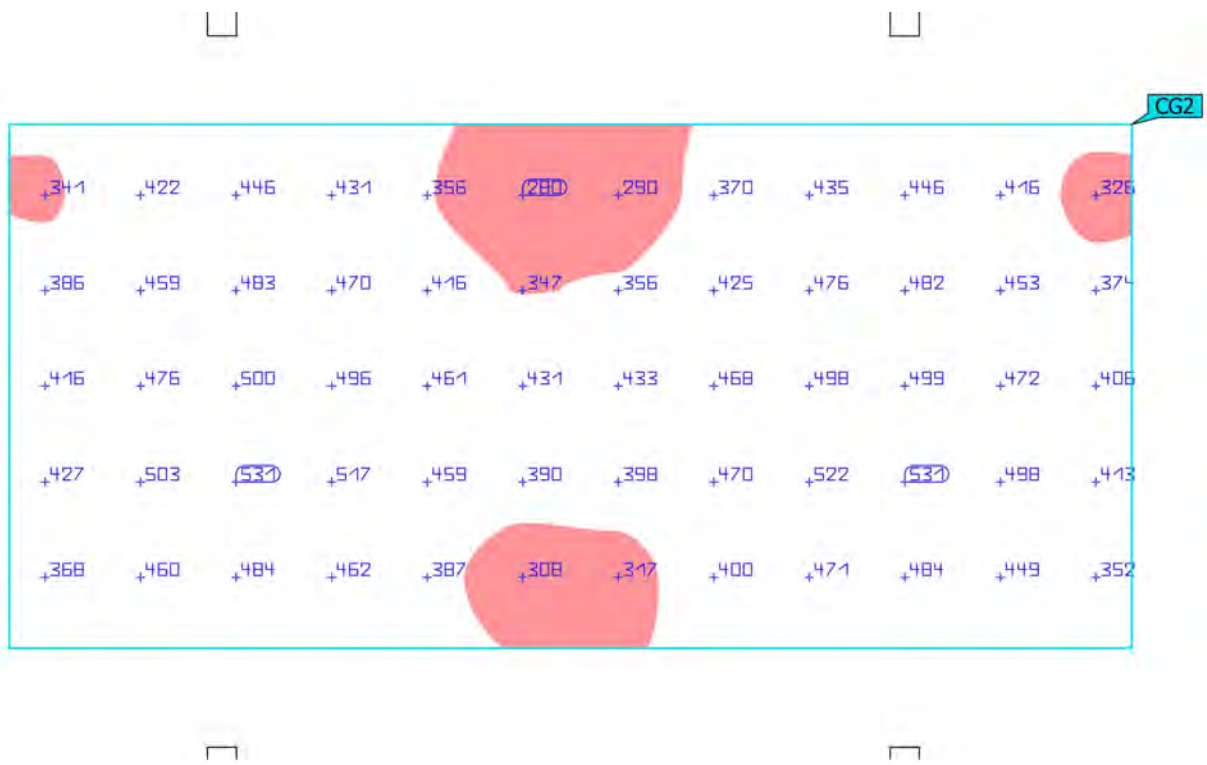
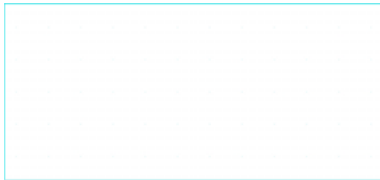
Calculation objects

Calculation surfaces

Properties	\bar{E}	E_{min}	E_{max}	g_1	g_2	Index
Court 14 PPA Perpendicular Illuminance Height: 1.000 m	430 lx	279 lx	530 lx	0.65	0.53	CG1
Court 13 PPA Perpendicular Illuminance Height: 1.000 m	431 lx	280 lx	531 lx	0.65	0.53	CG2
Court 13 TPA Perpendicular Illuminance Height: 1.000 m	261 lx	93.7 lx	409 lx	0.36	0.23	CG3
Court 14 TPA Perpendicular Illuminance Height: 1.000 m	260 lx	101 lx	406 lx	0.39	0.25	CG4
Court 12 PPA Perpendicular Illuminance Height: 1.000 m	358 lx	219 lx	457 lx	0.61	0.48	CG5
Court 11 PPA Perpendicular illumination Height: 1.000 m	350 lx	210 lx	454 lx	0.60	0.46	CG6
Court 11&12 TPA Perpendicular Illuminance Height: 1.000 m	247 lx	99.4 lx	440 lx	0.40	0.23	CG7
Light pollution 1 Horizontal illuminance Height: 1.000 m	0.026 lx	0.002 lx	0.16 lx	0.077	0.013	CG8
Light pollution 3 Horizontal illuminance Height: 1.000 m	0.24 lx	0.033 lx	2.08 lx	0.14	0.016	CG9
River Perpendicular illumination Height: -0.100 m	0.022 lx	0.003 lx	0.073 lx	0.14	0.041	CG10

(Light scene 1)

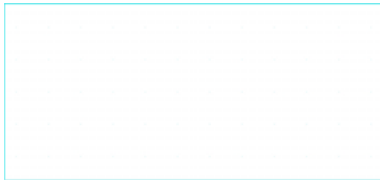
Court 1 PPA



Properties	\bar{E}	E_{min}	E_{max}	g_1	g_2	Index
Court 13 PPA Perpendicular Illuminance Height: 1.000 m	431 lx	280 lx	531 lx	0.65	0.53	CG2

(Light scene 1)

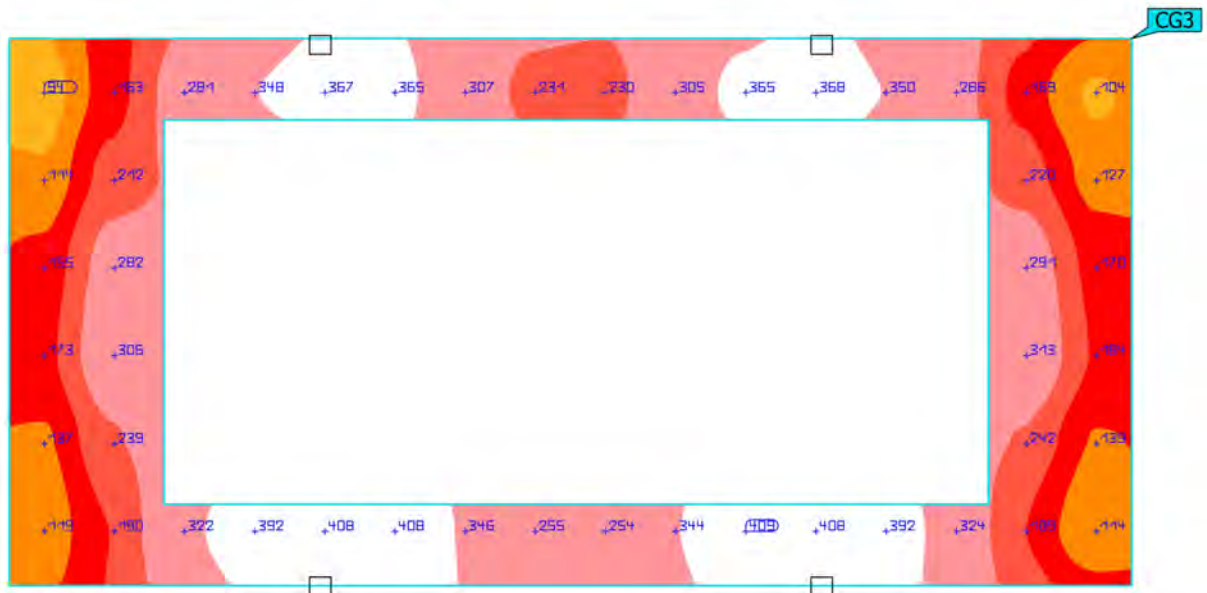
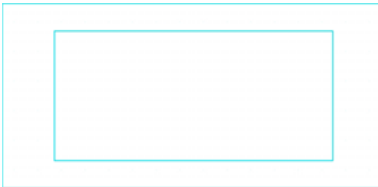
Court 2 PPA



Properties	\bar{E}	E_{min}	E_{max}	g_1	g_2	Index
Court 14 PPA Perpendicular Illuminance Height: 1.000 m	430 lx	279 lx	530 lx	0.65	0.53	CG1

(Light scene 1)

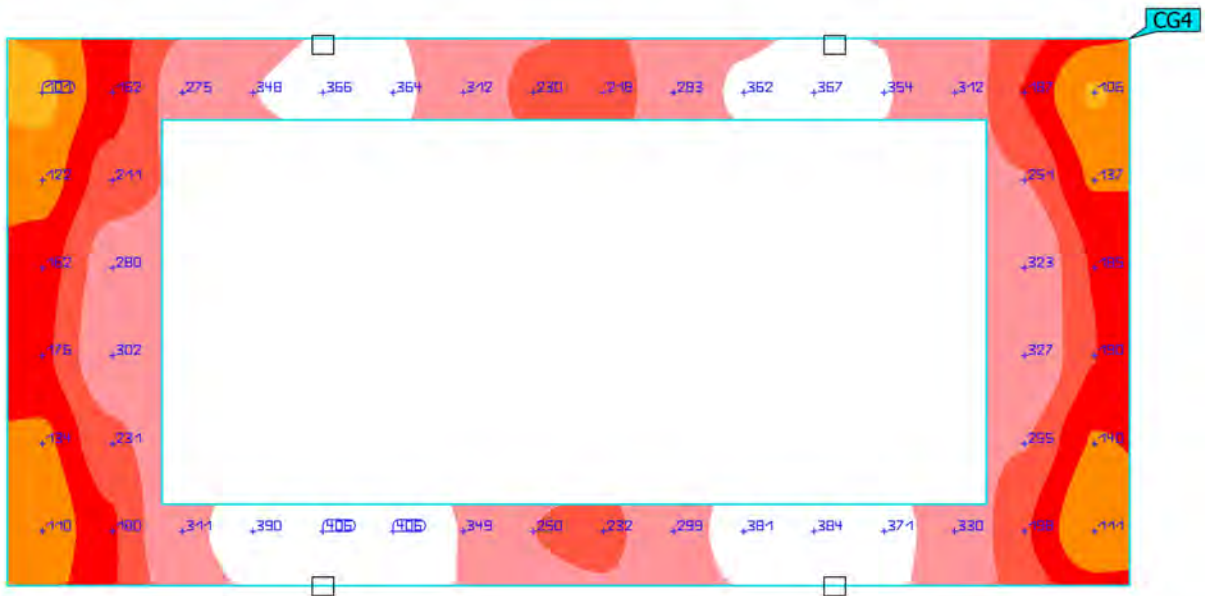
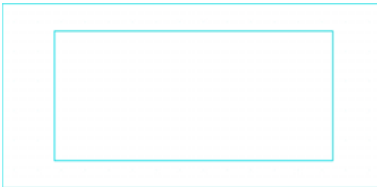
Court 1 TPA



Properties	\bar{E}	E_{min}	E_{max}	g_1	g_2	Index
Court 13 TPA Perpendicular Illuminance Height: 1.000 m	261 lx	93.7 lx	409 lx	0.36	0.23	CG3

(Light scene 1)

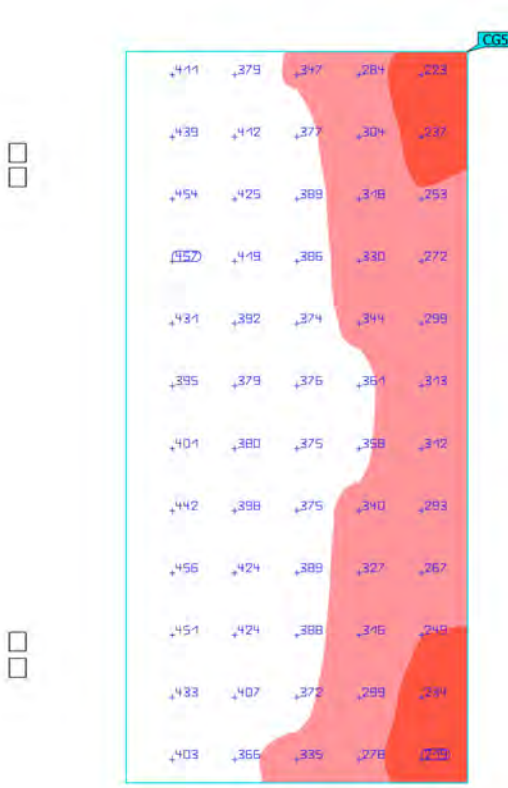
Court 2 TPA



Properties	\bar{E}	E_{min}	E_{max}	g_1	g_2	Index
Court 14 TPA Perpendicular illuminance Height: 1.000 m	260 lx	101 lx	406 lx	0.39	0.25	CG4

Tennis courts (Light scene 1)

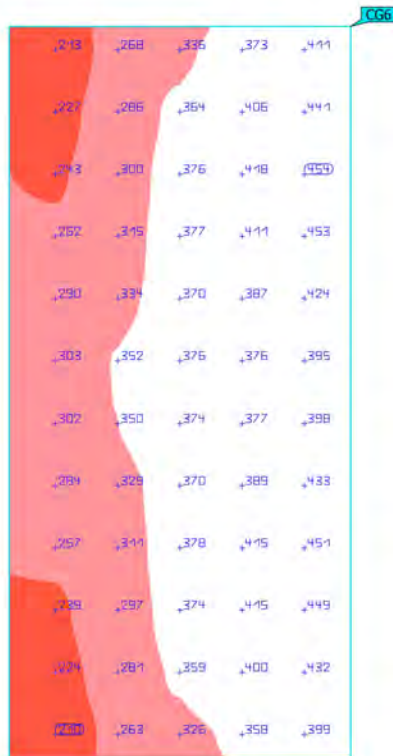
Court 3 PPA



Properties	\bar{E}	E_{min}	E_{max}	g_1	g_2	Index
Court 12 PPA Perpendicular Illuminance Height: 1.000 m	358 lx	219 lx	457 lx	0.61	0.48	CG5

Tennis courts (Light scene 1)

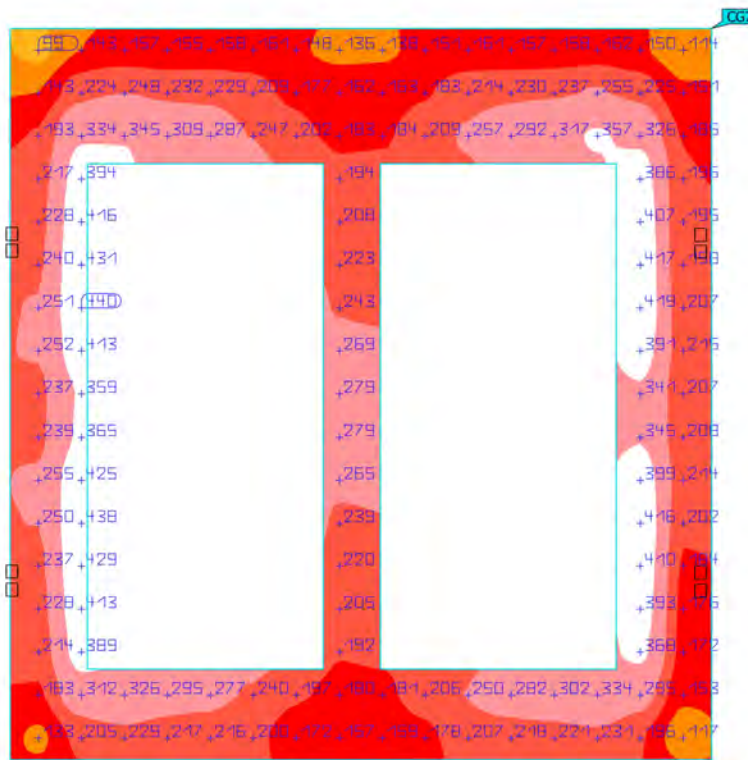
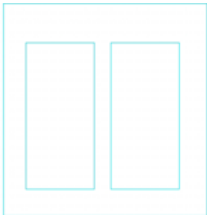
Court 4 PPA



Properties	\bar{E}	E_{min}	E_{max}	g_1	g_2	Index
Court 11 PPA Perpendicular illuminance Height: 1.000 m	350 lx	210 lx	454 lx	0.60	0.46	CG6

Tennis courts (Light scene 1)

Court 3 TPA



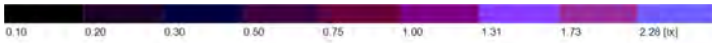
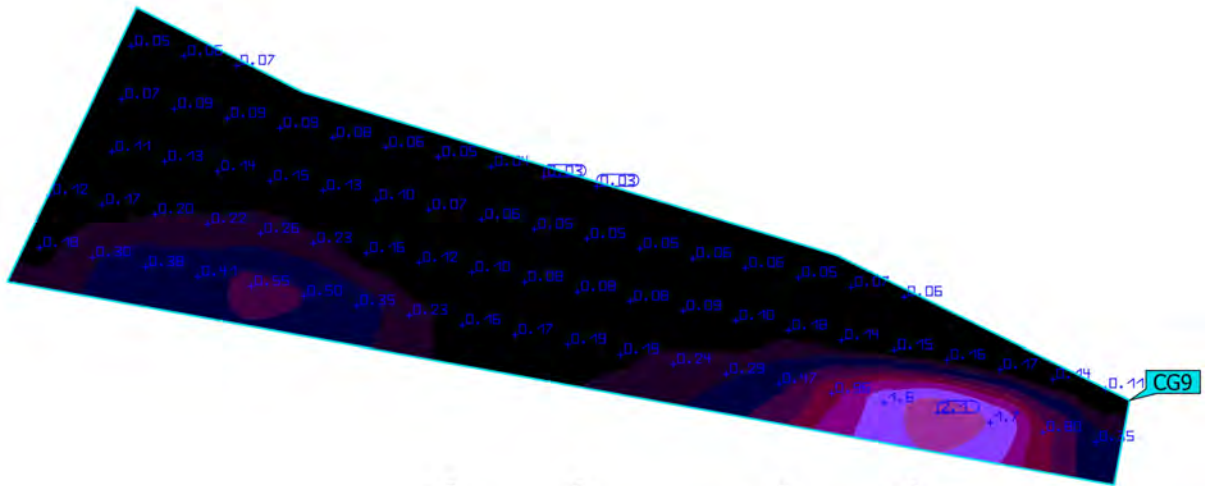
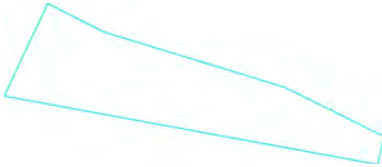
Properties	\bar{E}	E_{min}	E_{max}	g_1	g_2	Index
Court 11 & 12 TPA Perpendicular Illuminance Height: 1.000 m	247 lx	99.4 lx	440 lx	0.40	0.23	CG7

Tennis courts (Light scene 1)
Light pollution 1



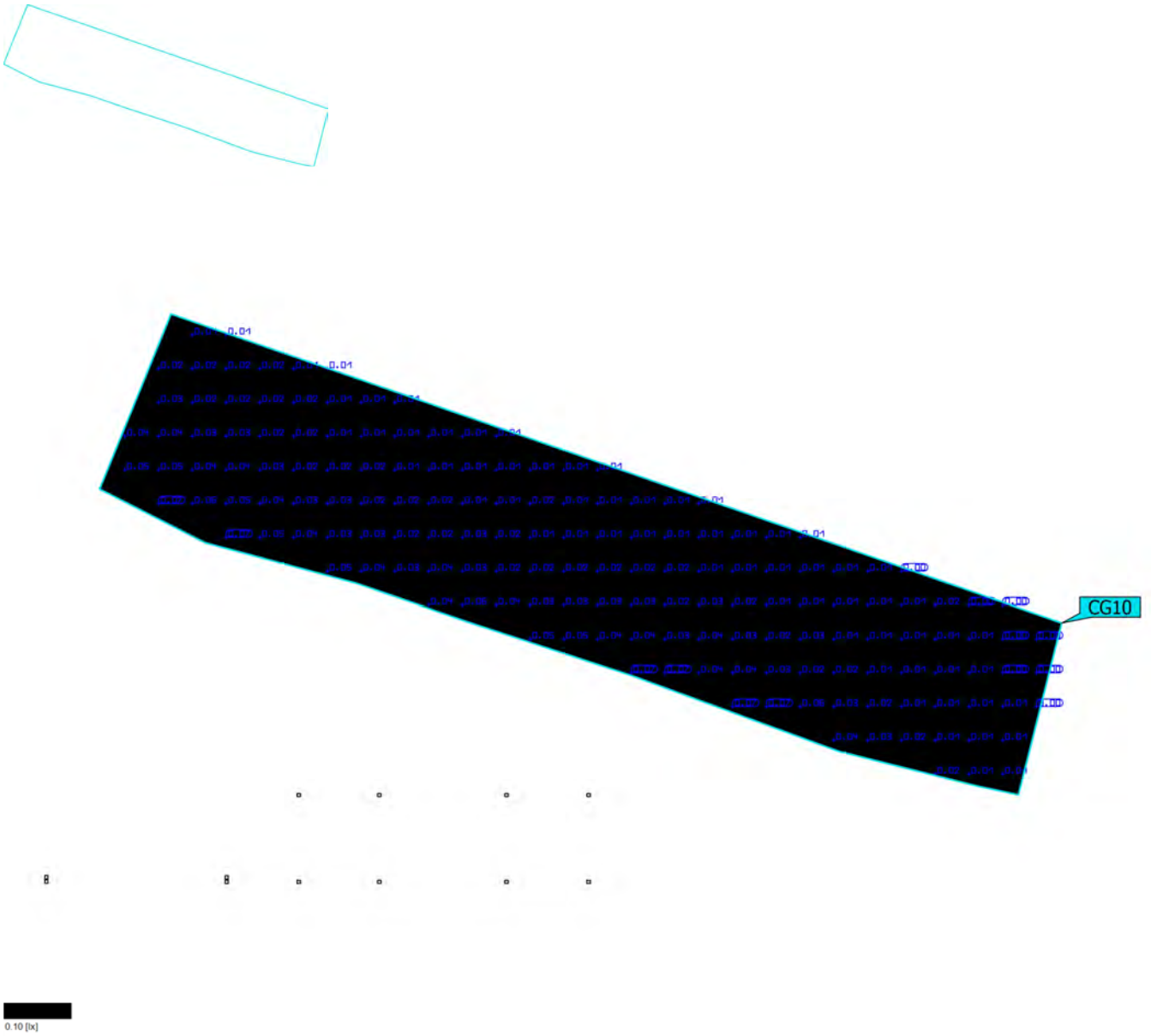
Properties	\bar{E}	E_{min}	E_{max}	g_1	g_2	Index
Light pollution 1 Horizontal illuminance Height: 1.000 m	0.026 lx	0.002 lx	0.16 lx	0.077	0.013	CG8

Tennis courts (Light scene 1)
Light pollution 3



Properties	\bar{E}	E_{min}	E_{max}	g_1	g_2	Index
Light pollution 3 Horizontal illuminance Height: 1.000 m	0.24 lx	0.033 lx	2.08 lx	0.14	0.016	CG9

Tennis courts (Light scene 1)
River



Properties	\bar{E}	E_{min}	E_{max}	g_1	g_2	Index
River Perpendicular illuminance Height: -0.100 m	0.022 lx	0.003 lx	0.073 lx	0.14	0.041	CG10



CB CE SAA RoHS

Electrical Information					
Model No.	ST11-180	ST11-240	ST11-300	FL48-450	FL48-600
Power Consumption(±5%)	180W	240W	300W	450W	600W
Power Supply	Sosen				
Input Voltage	100-240VAC, 50 / 60 Hz				
Power Factor	>0.95				
Surge Protection	20kV				
Driver Type	Constant Current (CC)				
Control	Non dimmable				
	0-10V Dimmable				

Optic Information					
LED Type	LED 5050				
Luminous Flux (±10%)	27000lm	36000lm	45000lm	67500lm	90000lm
Efficacy(5000K Ra70)	150lm/W				
Correlated Color Temperature	5000K (3000K, 4000K optional)				
Color Rendering Index	Ra70				
Beam Angle	R10502, R10503, R10504, R10505, R10506, R10507, R10508, R10533, R10564				
UGR level	N/A				

Description

Definiator Pro LED Area Lights are designed for outdoor lighting applications requiring bright, energy savings and robust performance. The High output LED and PC lens provide outstanding uniformity and efficiency. Multiple asymmetric beam angle makes it flexible for different projects' requirement.

Key Features

- Compact design with 2 size, 180W to 600W.
- IK10, IP66, 20KV.
- Die cast aluminum housing with external fins, ensure greater heat dissipation.
- Adjustable U bracket wall mount standard for easy installation.
- High output lumen efficiency, up to 150lm/W.
- Durable PC optics resist yellowing. More than 9 variety of beam angles to fit different applications, including Type II, III, IV, V.
- House-side Shield to avoid intrusive light towards buildings.

Applications

- Parking lots
- Outdoor sports
- Square
- Stadium
- For recreational sports (tennis courts, basketball courts...)
- For billboard lighting (Tall-type billboard, wide-type billboard)
- Exhibition center
- Soccer field

Dimensions and Mount

Product Dimension	685*362*94mm		656x635x82mm	
Luminaire Net Weight	9.3±0.3 kg	9.9±0.3 kg	15.7±0.3 kg	
Export Carton Size	630x410x165mm		735x725x165mm	
Gross Weight	10.5±0.3 kg	11.1±0.3 kg	17.7±0.3 kg	
Mounting Option	Bracket mount			
Material	Aluminum alloy			
	Polycarbonate optical lens			
Finish	Powder coating			
Fixture Color	Black(RAL9017)			
EPA	2.37ft²/0.22m²		4.2ft²/0.33m²	
IK Rating	IK10			
IP Rating	IP66			

Lifespan and Warranty

Operating Temperature	-30°C to + 50°C			
Life Time of LED @Ta=25°C	44000hrs-L90			
	93000hrs-L80			
	147000hrs-L70			
Warranty	5 Years			

New Features

**Please consult Vizona Team for details.*

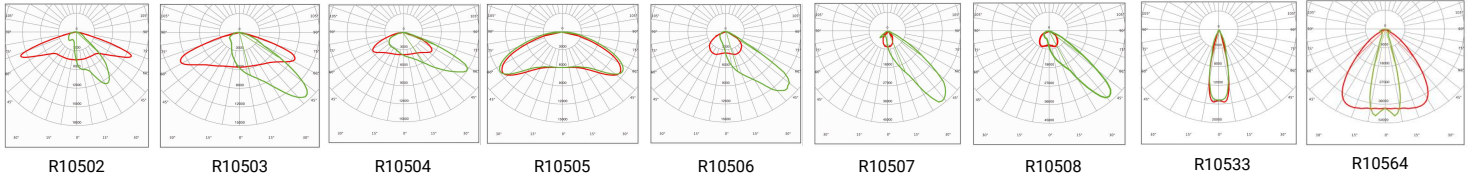
Vizona Pty Ltd

info@vizona.com.au

www.vizona.com.au

1300 250 150

Photometry



Mounting Options

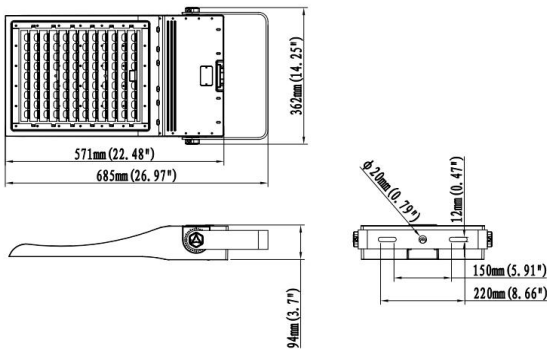


Bracket mount

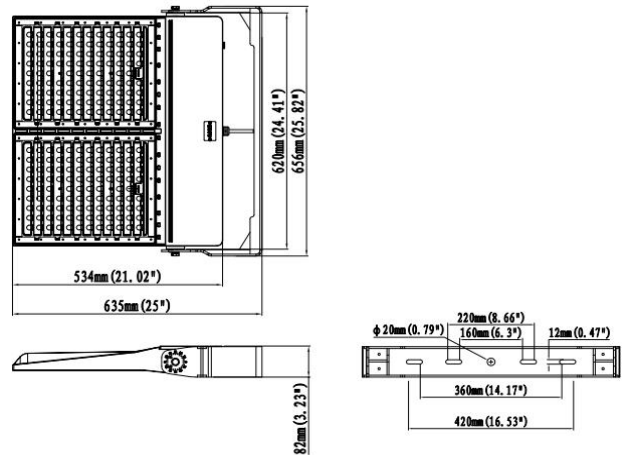
Dimensions

Unit:mm

ST11-180W/240W/300W



FL48-450W/600W



Accessories



PC Optic Lens

Refer to the Photometry

Code: R10502, R10503, R105034, R10505, R10506, R10507, R10508, R10533, R10564



Anti-Glare Shield

PC Material for back light control .

Code: SPR11-06

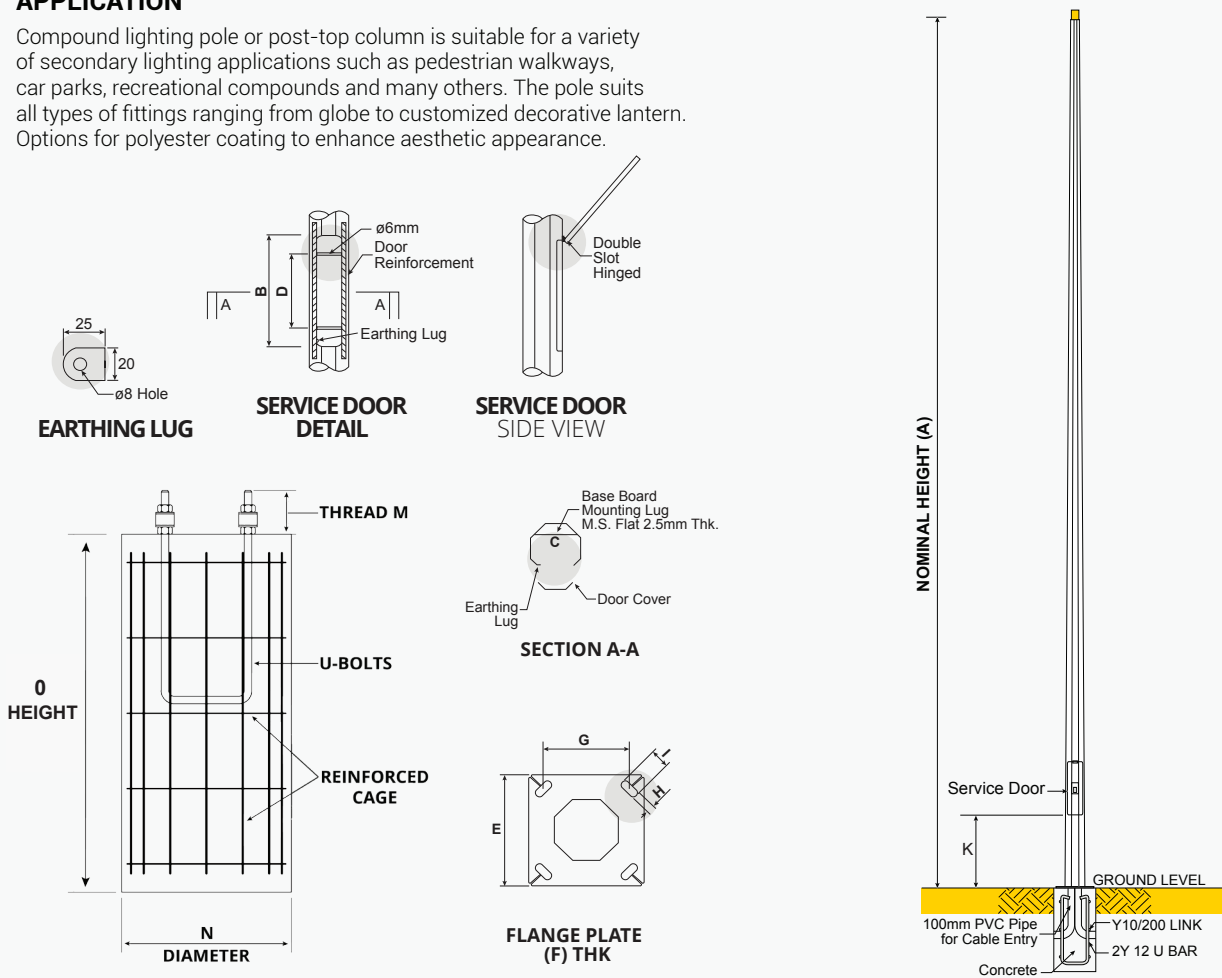


Octagonal Pole Post - Top Column - Flange Mounted

Technical Specification

APPLICATION

Compound lighting pole or post-top column is suitable for a variety of secondary lighting applications such as pedestrian walkways, car parks, recreational compounds and many others. The pole suits all types of fittings ranging from globe to customized decorative lantern. Options for polyester coating to enhance aesthetic appearance.



NOMINAL HEIGHT (A)	B	C	D	E x (F) THK.	G x H x I	M - N / O	GRD. LVL. to SRVC. DOOR (K)
3M	350mm	90mm	150mm	250 x 20mm	195 x 20 x 44mm	øM16 - 600/800	305mm
3.5M	350mm	90mm	150mm	250 x 20mm	195 x 20 x 44mm	øM16 - 600/800	305mm
4M	350mm	90mm	150mm	250 x 20mm	195 x 20 x 44mm	øM16 - 600/800	305mm
4.5M	350mm	90mm	150mm	250 x 20mm	195 x 20 x 44mm	øM16 - 600/800	305mm
5M	350mm	90mm	150mm	250 x 20mm	195 x 20 x 44mm	øM16 - 600/900	305mm
6M	450mm	100mm	300mm	300 x 25mm	220 x 26 x 53mm	øM20 - 600/1100	305mm
7M	450mm	100mm	300mm	300 x 25mm	220 x 26 x 53mm	øM20 - 600/1100	305mm
8M	450mm	120mm	300mm	300 x 25mm	220 x 26 x 53mm	øM20 - 600/1200	305mm
9M	450mm	120mm	300mm	300 x 25mm	220 x 26 x 53mm	øM20 - 600/1300	610/1850mm
10M	450mm	120mm	300mm	350 x 25mm	260 x 30 x 62mm	øM24 - 750/1400	610/1850mm
12M	450mm	120mm	300mm	400 x 25mm	300 x 30 x 67mm	øM24 - 750/1600	610/1850mm