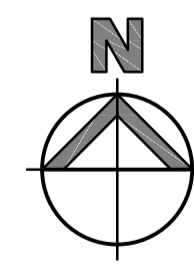




- KEY**
- NEW PATH
  - NEW LANDSCAPING
  - EXISTING SITE LEVEL



No.	Date	Revision	DRW

**RETIREMENT VILLAGE  
ALCHERA APARTMENTS**  
40-44 WORLEY STREET, WILAGEE

**GROUND FLOOR &  
SITE PLAN**

DRAWN BY: GB, GH, DK    CHECKED BY: GB  
SCALE: 1:200 ON A1    PROJECT No.: 301

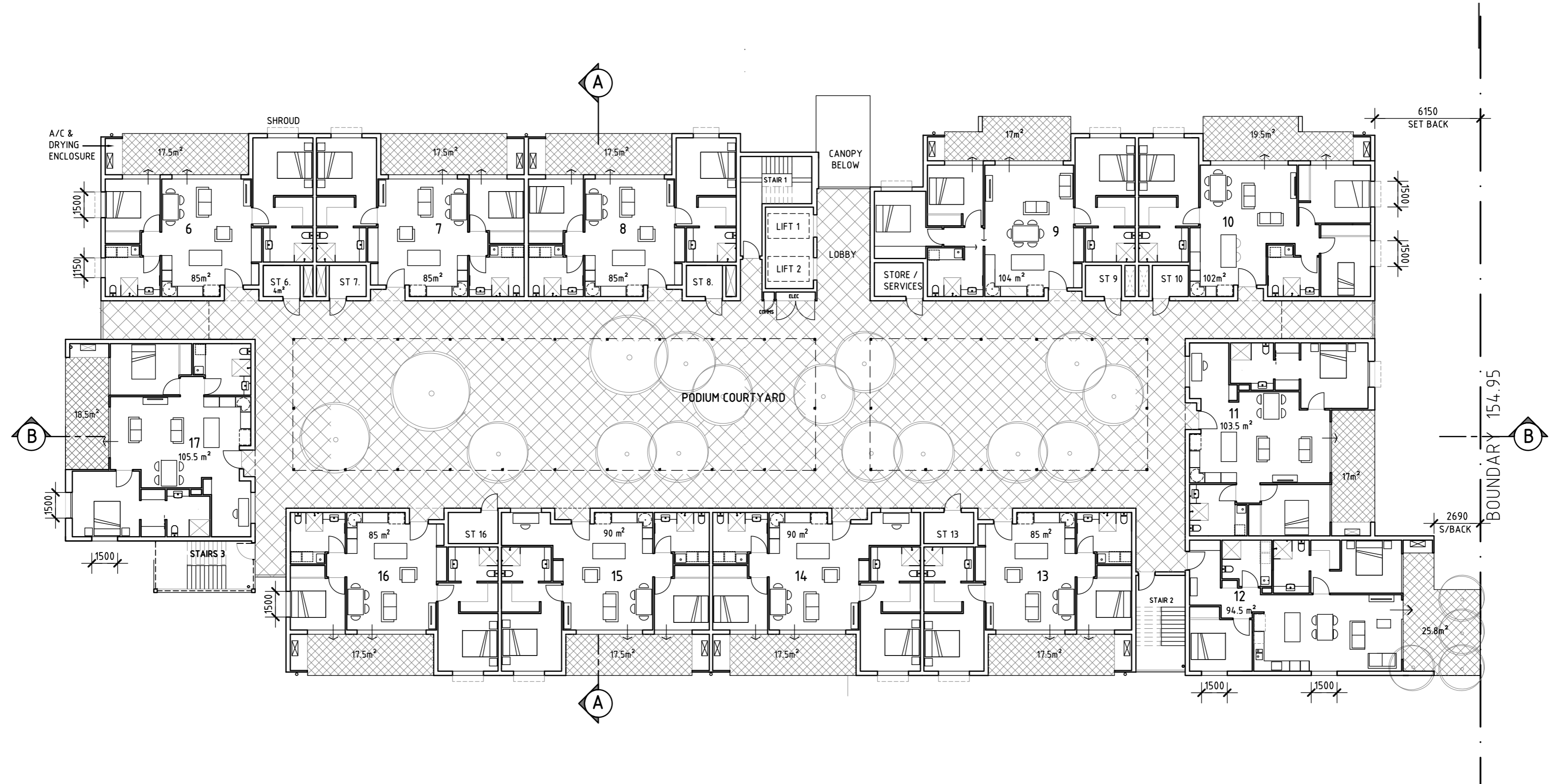
**GARY BATT  
ASSOCIATES**  
ARCHITECTS

Level 2, 456 Fitzgerald St. North Perth, WA 6006  
PH. (08) 9389 7731

REV:    DWG: **A2.0**

**Certificate No. #HR-ZWG07Q-01**  
Scan QR code or follow website link for rating details.

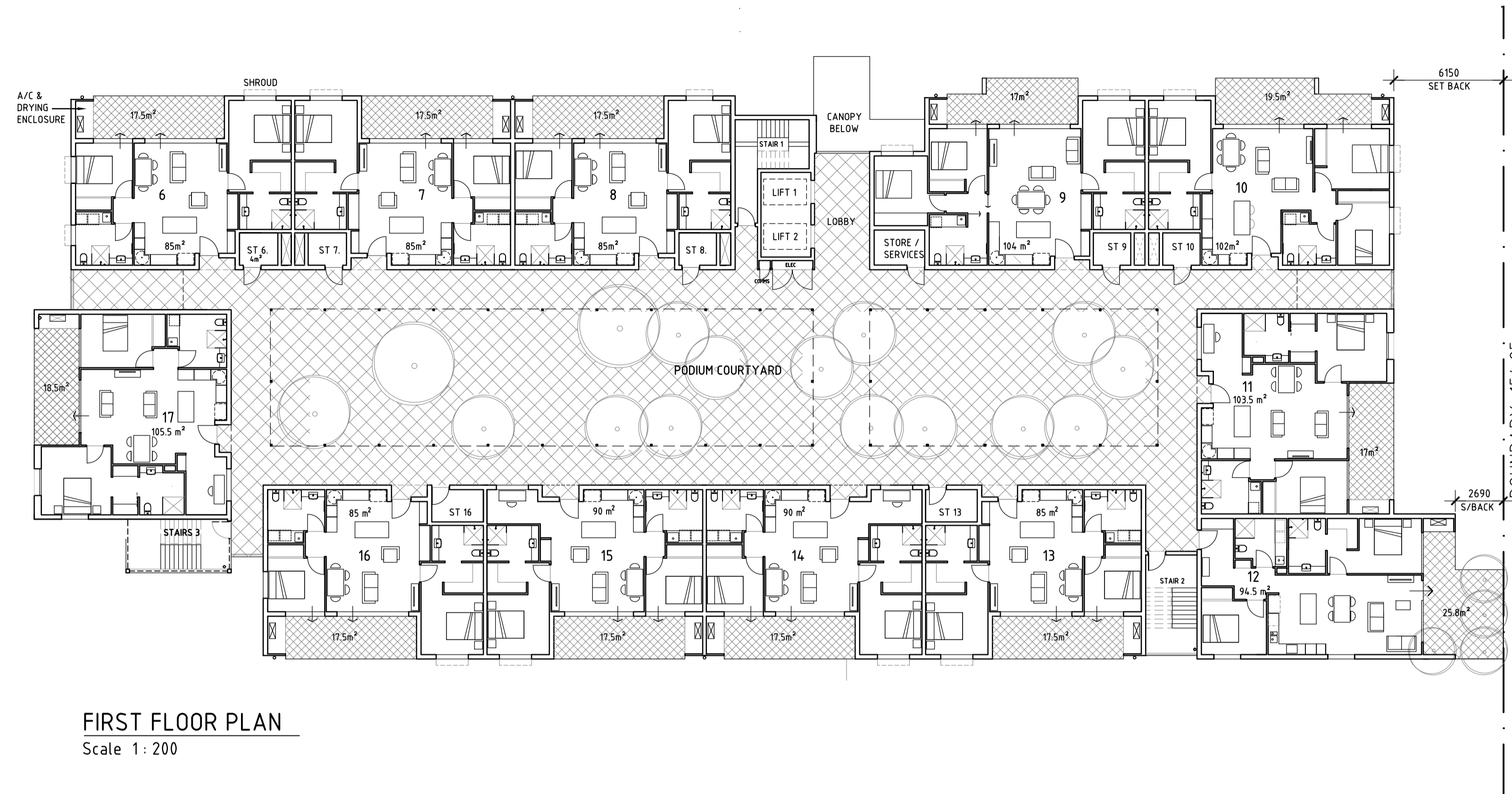
Assessor name: Nina Kelly  
Accreditation No.: DMN191305  
Property Address: 40-44 Worley Street, Wilagee, WA 6156  
http://www.nairo-software.com.au/pdf/HR-ZWG07Q-01



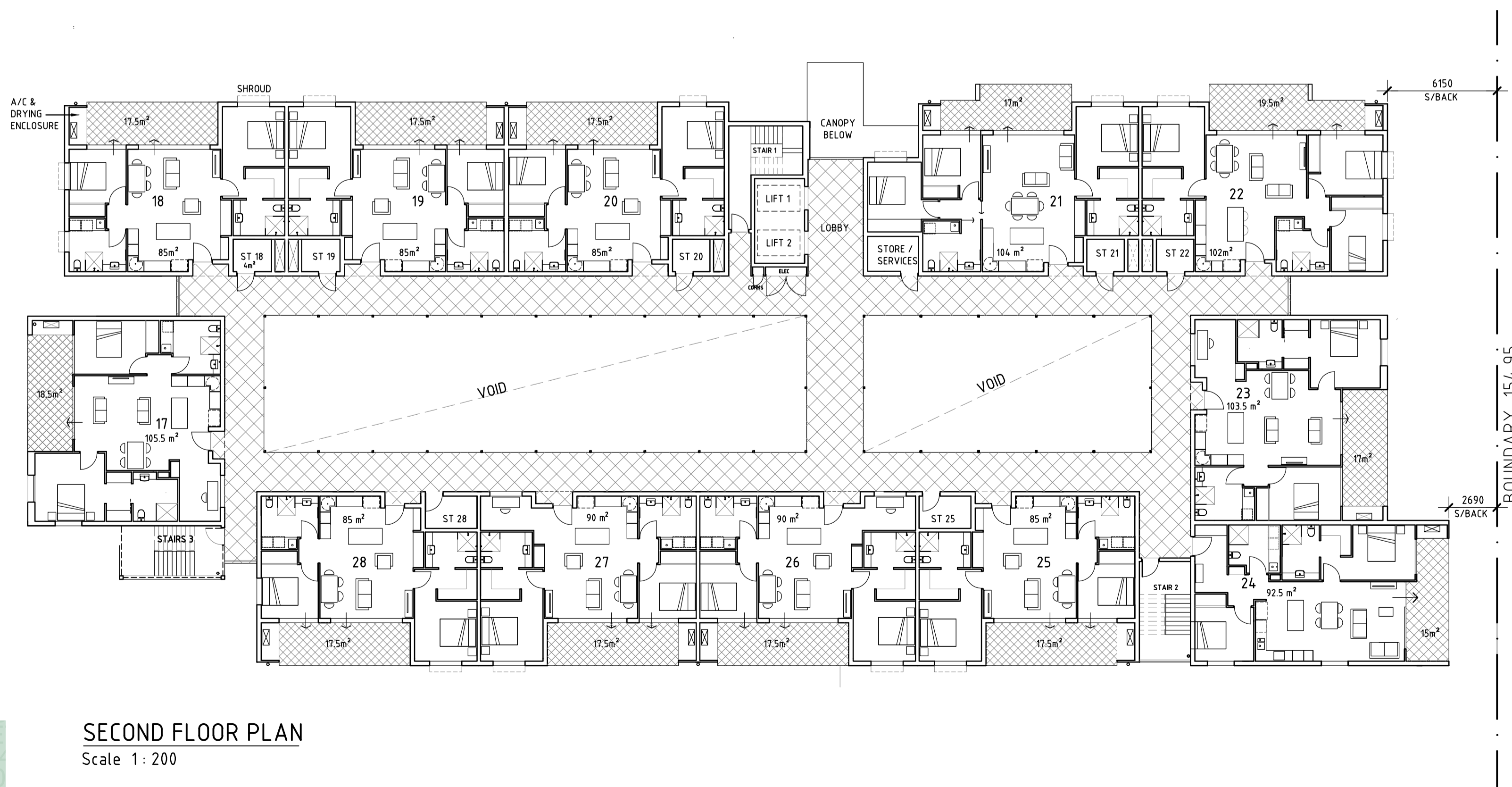
**Certificate No. #HR-ZWG07Q-01**  
Scan QR code or follow website link for rating details.

Assessor name: Nina Kelly  
Accreditation No.: DMN/19/1905  
Property Address: 40-44 Worley Street, Willagee, WA, 6156  
<http://www.hero-software.com.au/pdf/HR-ZWG07Q-01>



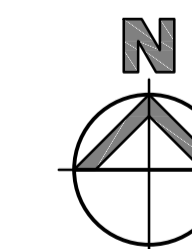


FIRST FLOOR PLAN  
Scale 1: 200



SECOND FLOOR PLAN  
Scale 1: 200

No	Date	Revision	DRW
-	--	--	--



RETIREMENT VILLAGE  
ALCHERA APARTMENTS  
40-44 WORLEY STREET, WILAGEE  
**FIRST & SECOND  
FLOOR PLAN**

DRAWN BY: GB, GH, DK CHECKED BY: GB  
SCALE: 1:200 ON A1 PROJECT No.: 301

**GARY BATT  
ASSOCIATES** ARCHITECTS

Level 2, 456 Fitzgerald St. North Perth, WA 6006  
PH. (08) 9389 7731

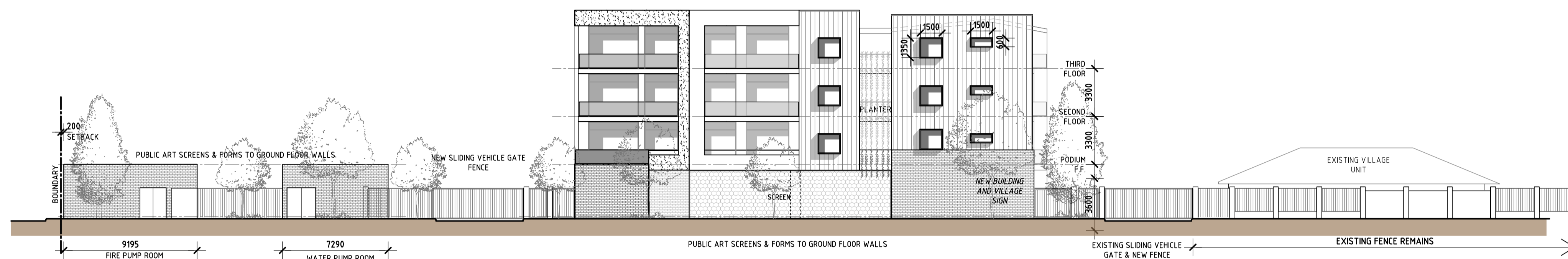
REV: - DWG: **A2.1**



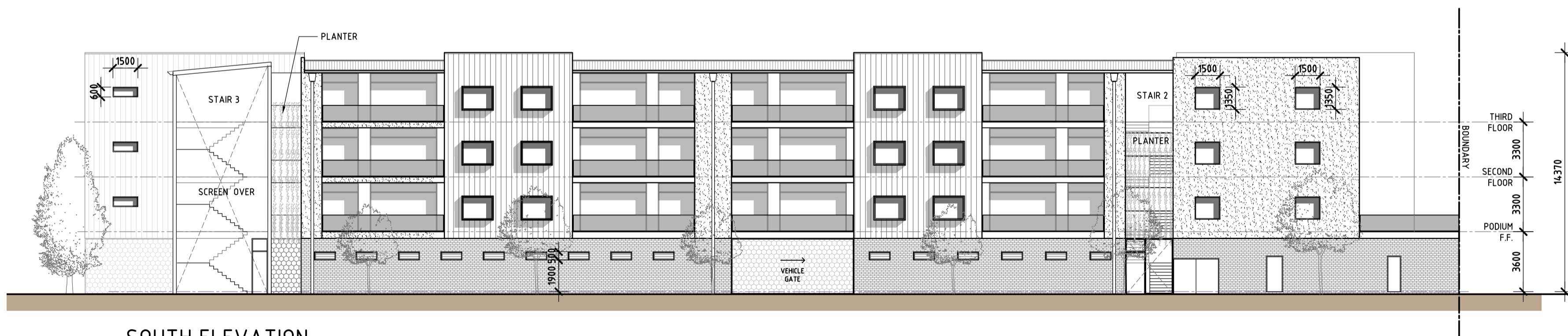




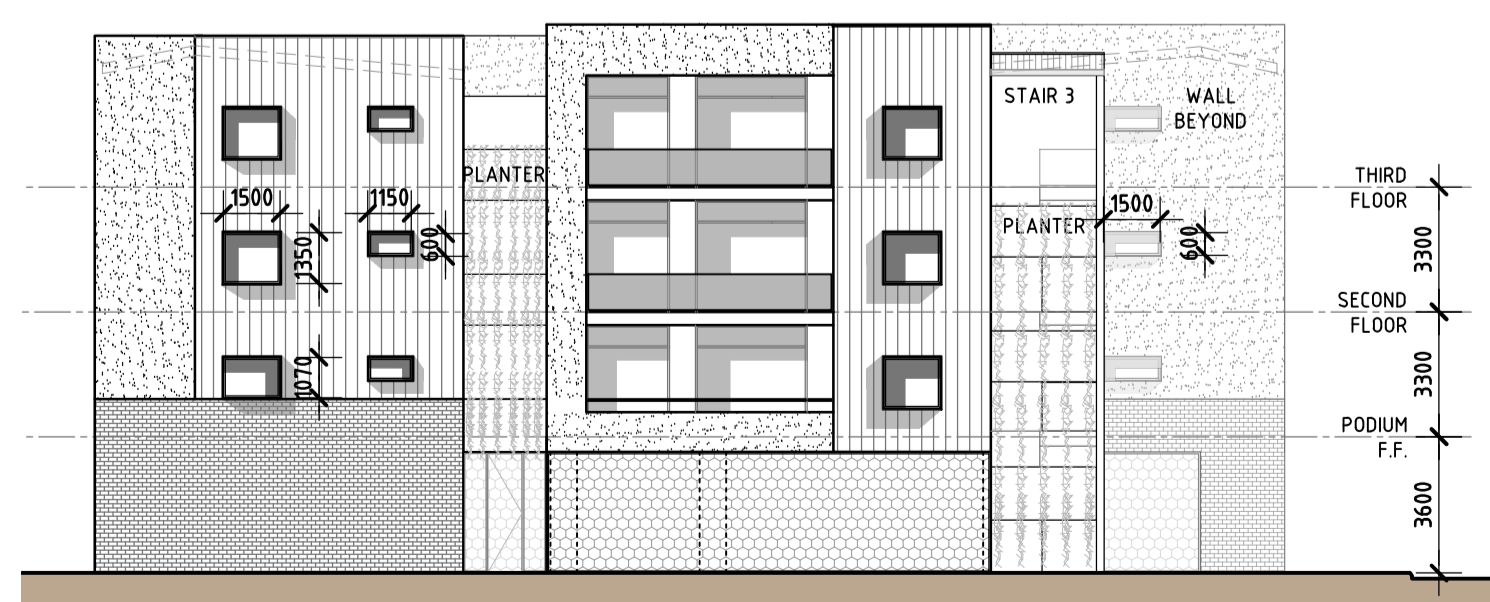
**NORTH ELEVATION**  
1:200



**EAST ELEVATION (STREET)**  
1:200





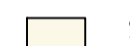




**SOUTH ELEVATION**  
1:200



**WEST ELEVATION**  
1:200

**KEY:**

-  FACE BRICK
-  ACRYLIC TEXTURE COAT RENDER
-  RAISED SEAM COLORBOND
-  STONE
-  SCREEN
-  GLASS BALUSTRADE
-  OBSCURE GLASS BALUSTRADE

No.	Date	Revision	DRW
-	---	--	--

**RETIREMENT VILLAGE**  
**ALCHERA APARTMENTS**  
40-44 WORLEY STREET, WILAGEE

**ELEVATIONS**

DRAWN BY: DK      CHECKED BY: GB, GH  
SCALE: VARIES      PROJECT No.: 301



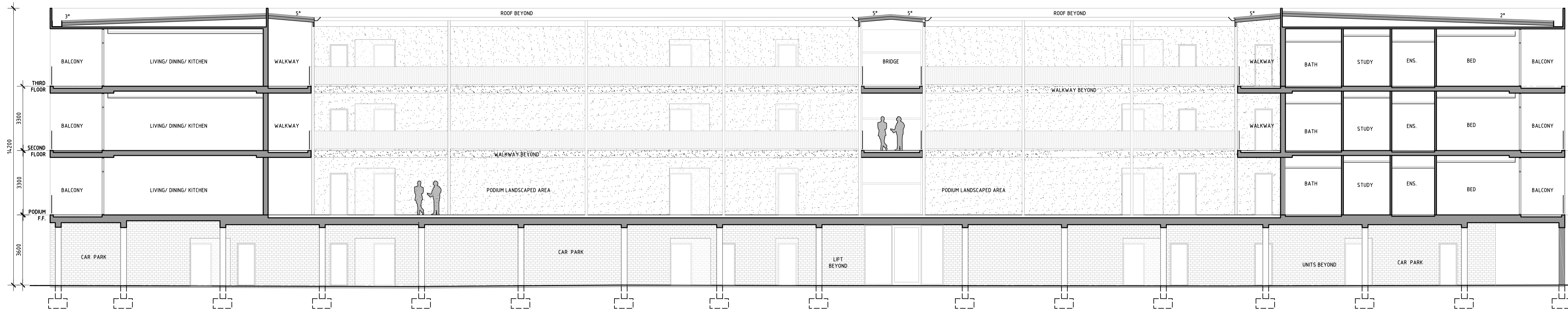
**GARY BATT ASSOCIATES ARCHITECTS**



Level 2, 456 Fitzgerald St. North Perth, WA 6006  
PH. (08) 9389 7731

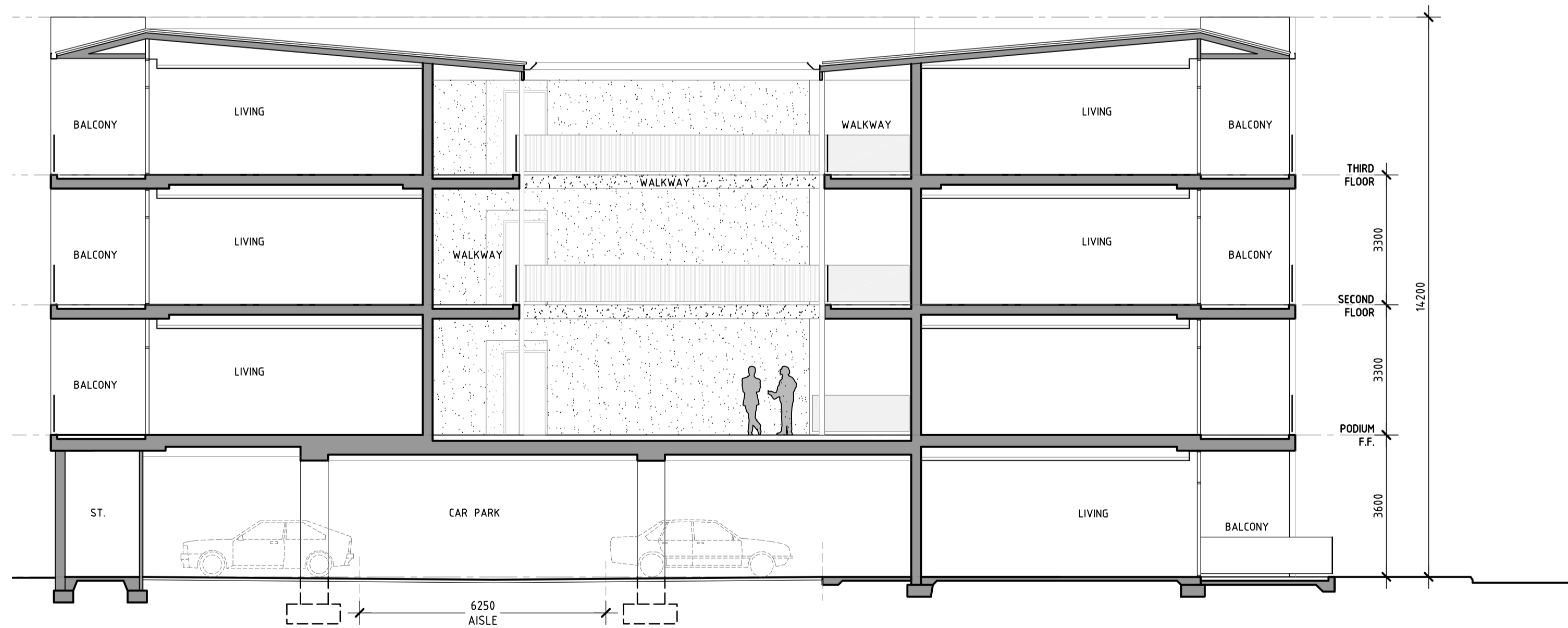
REV: -      DWG: **A3.0**

**ENERGY EFFICIENCY NOTES**  
 ROOF – R1.3 REFLECTIVE ROOF BLANKET  
 CEILING - R4.0 BULK CEILING INSULATION  
 EXTERNAL WALLS - R2.5 BULK WALL INSULATION  
 NEIGHBOUR WALLS - R2.5 BULK WALL INSULATION  
 INTERNAL WALLS NIL  
 FLOORS – CONCRETE SLAB NIL  
 FLOORS – SUSPENDED CONCRETE (INCL. NEIGHBOUR)  
 R2.5 SOFFIT BOARD INSULATION



**SECTION B**

SCALE: 1:100



**SECTION A**

SCALE: 1:100

No.	Date	Revision	DRW
-	--	-	-

**RETIREMENT VILLAGE  
 ALCHERA APARTMENTS**  
 40-44 WORLEY STREET, WILAGEE

**SECTIONS**

DRAWN BY: GH, DK      CHECKED BY: GH  
 SCALE: VARIES      PROJECT No.: 301

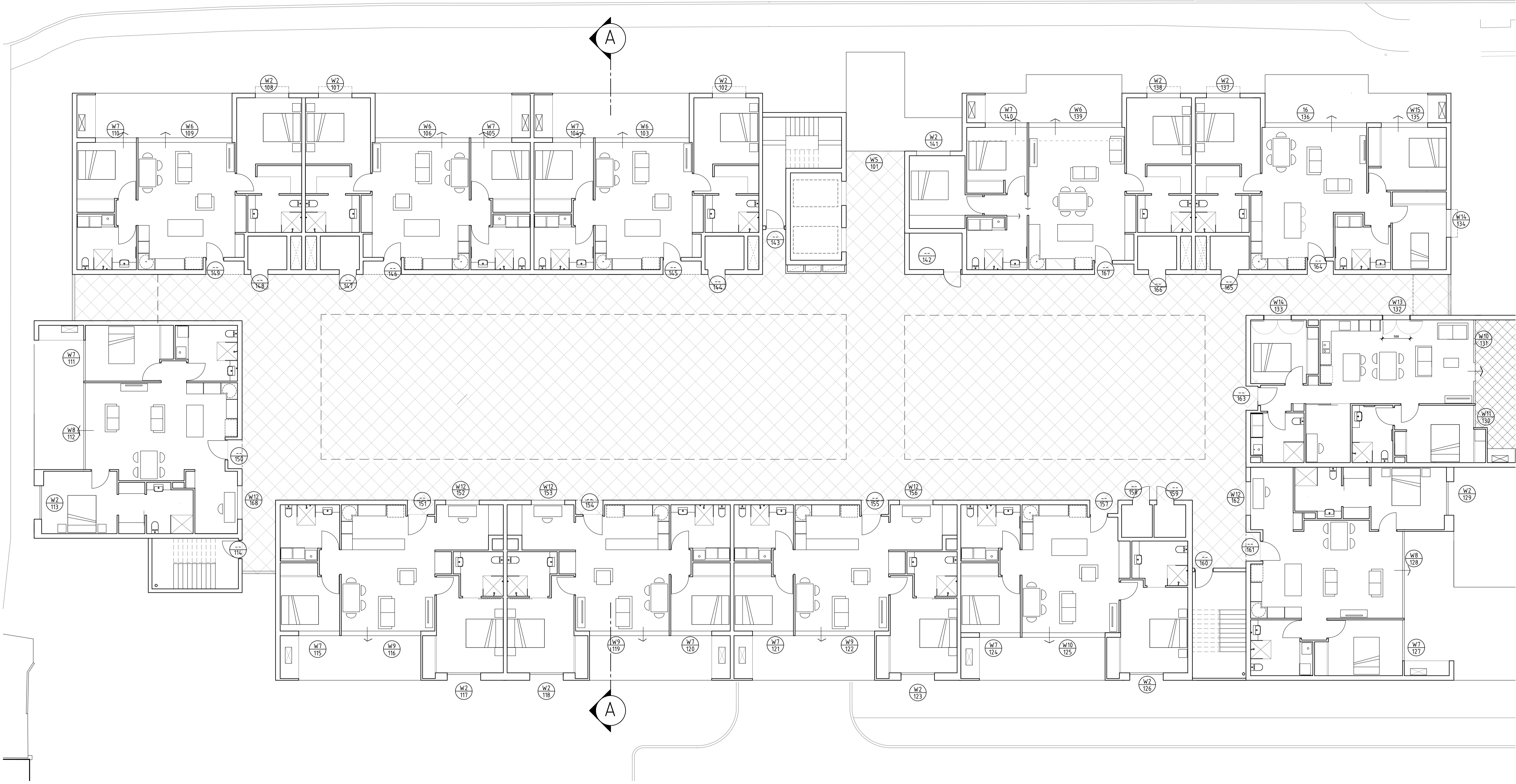
**GARY BATT  
 ASSOCIATES**  
 ARCHITECTS

Level 2, 456 Fitzgerald St. North Perth, WA 6006  
 PH. (08) 9389 7731

REV: -      DWG: **A3.1**







No.	Date	Revision	DRW

RETIREMENT VILLAGE  
 ALCHERA APARTMENTS  
 40-44 WORLEY STREET, WILAGEE

**D/W SCHEDULE REF.  
 PLAN (F.F.)**

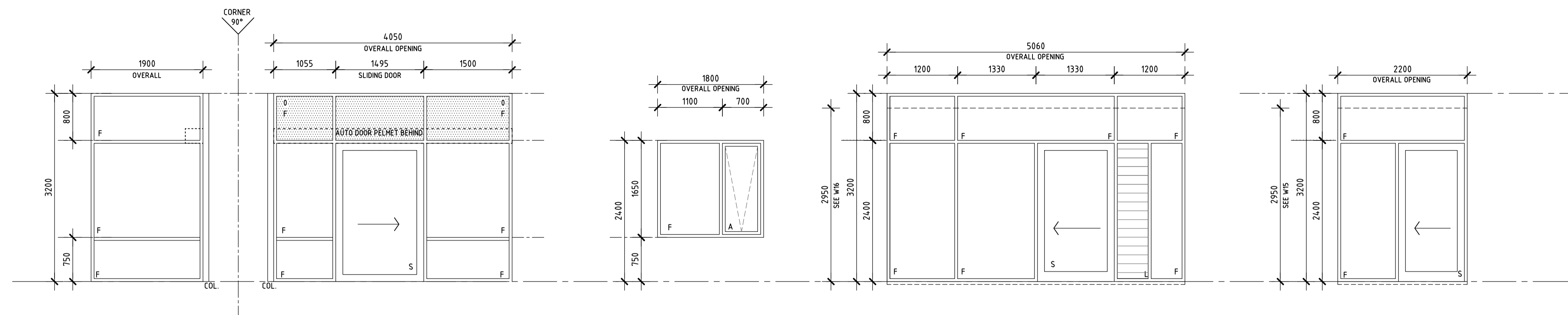
DRAWN BY: GB, GH, DK    CHECKED BY: GB  
 SCALE: 1:100 ON A1    PROJECT No.: 301

**GARY BATT ASSOCIATES ARCHITECTS**

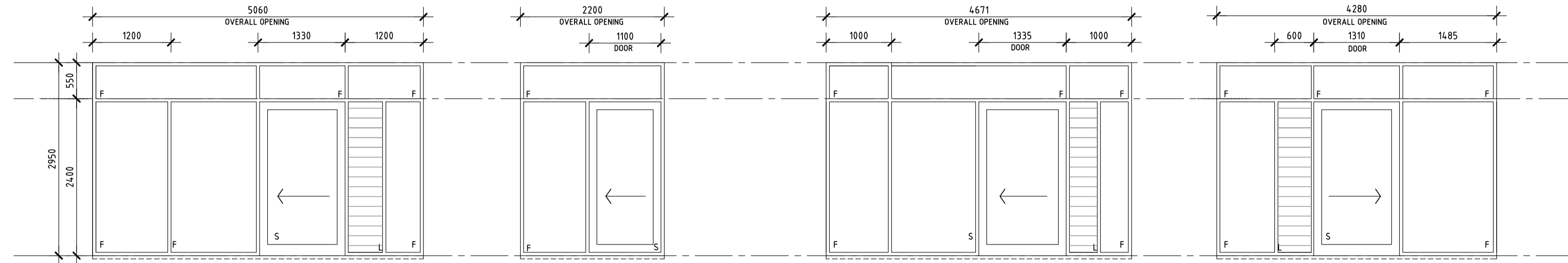
Level 2, 456 Fitzgerald St. North Perth, WA 6006  
 PH. (08) 9389 7731

REV: -    DWG: **F-A6.0**

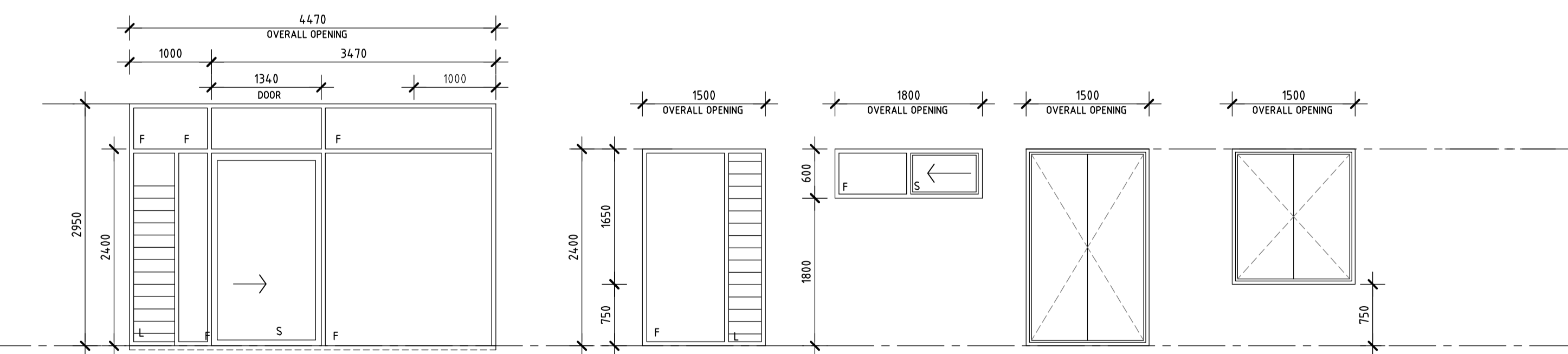
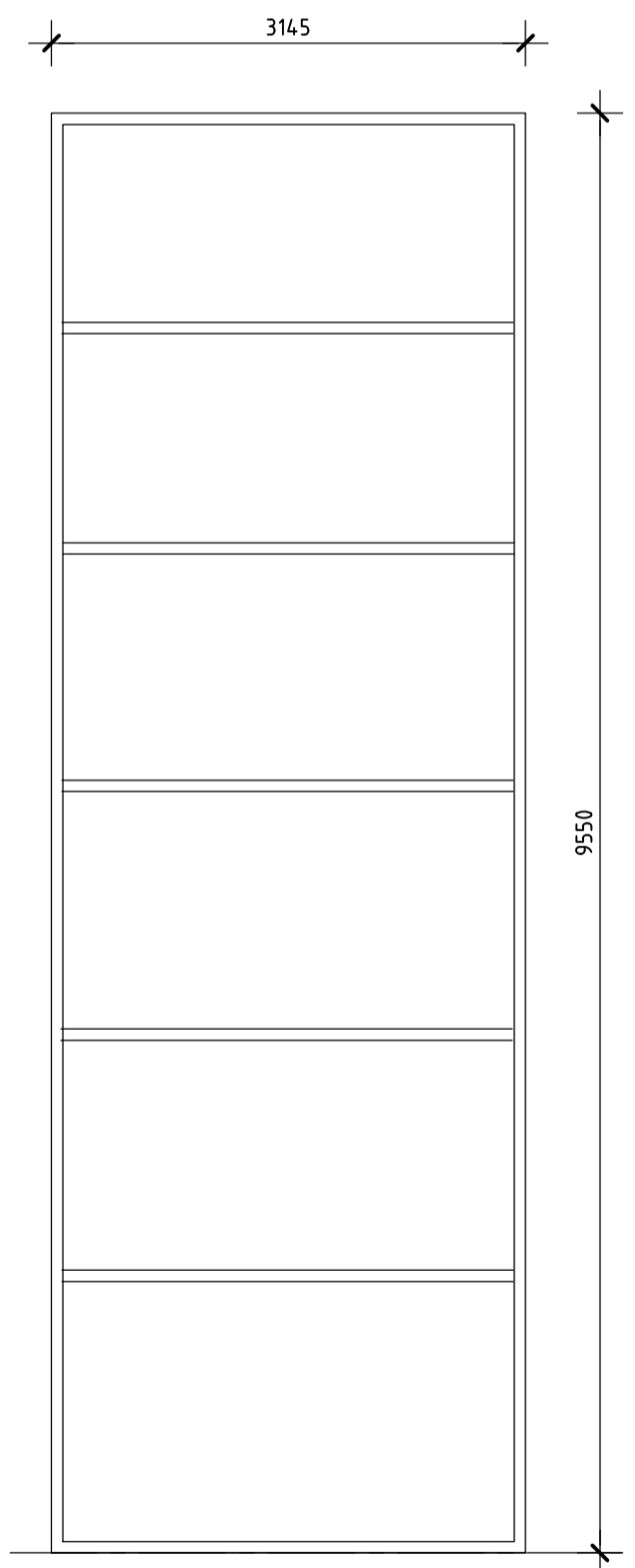




WINDOW/ DOOR TYPE	W1	W2	W3	W16 (2950MM HEAD HT.)	W4	W15 (2950MM HEAD HT.)
OPENING NUMBERS	G01	G03, G09, G27, 102, 109, 113, 118, 126, 129, 138 202, 208, 213, 218, 226, 229, 238 302, 308, 213, 318, 326, 329, 338  HANDED: G08, G26, 107, 117, 123, 137, 141 207, 217, 223, 237, 241 307, 317, 323, 337, 341	G4, G10, G28  HANDED: G7, G25	G36 236 336	G05, G11, G29,  HANDED: G6, G24	G35 235 335



WINDOW/ DOOR TYPE	W6	W7	W8	W9
OPENING NUMBERS	103, 109, 139 203, 209, 239 303, 309, 339	104, 110, 111, 115, 121, 140, 114, 118, 127 204, 210, 211, 215, 221, 240, 214, 218, 227 304, 310, 311, 315, 321, 340, 314, 318, 327	112, 212, 312	116, 122 216, 222 316, 322
DESCRIPTION	HANDED: 106, 206, 306	HANDED: 105, 117, 120, 124 205, 217, 220, 224 305, 317, 320, 324	HANDED: 128, 228, 328	HANDED: 119, 219, 319



WINDOW/ DOOR TYPE	W10	W11	W12	W13	W14	W5
OPENING NUMBERS	125, 131 225, 231 325, 331	130 230 330	152, 156, 162, 168 252, 256, 262, 268 352, 356, 362, 368	132 232 332	133, 134 233, 234 333, 334	101
DESCRIPTION			HANDED: 153 253 353			

**LEGEND:**  
 COS CHECK ON SITE  
 F FIXED GLASS  
 A AWNING SASH  
 O OBSCURE GLASS  
 BJ BUTT JOINT SILICON SEAL  
 SD SLIDING DOOR  
 L WEATHERPROOF LOUVER

No.	Date	Revision	DRW

**RETIREMENT VILLAGE  
 ALCHERA APARTMENTS**  
 40-44 WORLEY STREET, WILAGEE  
**WINDOW SCHEDULE**

DRAWN BY: GB, GH, DK CHECKED BY: GB  
 SCALE: 1:50 ON A1 PROJECT No.: 301



**GARY BATT  
 ASSOCIATES**  
 ARCHITECTS  
 Level 2, 456 Fitzgerald St. North Perth, WA 6006  
 PH. (08) 9389 7731

REV: - DWG: **A6.2**