

13 THE ESPLANADE, MOUNT PLEASANT



LOCATION

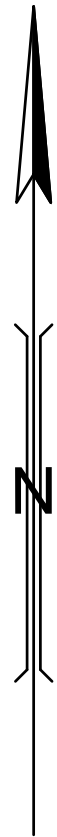
SCALE 1 : 250

DRAWING INDEX		
SHEET	TITLE	DRAWING NO.
1	INDEX AND OVERVIEW	8136A1-24PG
2	SERVICES & DEMOLITION PLAN	8137A1-24PG
3	SETOUT & GRADING PLAN	8138A1-24PG
4	PAVING PLAN	8139A1-24PG
5	PAVING DETAILS	8140A1-24PG
6	FURNITURE & FIXTURES PLAN	8141A1-24PG
7	TREE PLANTING PLAN	8142A1-24PG
8	PLANTING PLAN	8143A1-24PG

MATERIAL QUANTITIES CAN BE FOUND ON
RELAVENT PAGES

LEGEND

-  GARDEN BED 395m²
-  TURF 1187m²




CAUTION
OPTIC FIBRE
CABLES IN AREA

WARNING
HIGH VOLTAGE WESTERN POWER UGP IN AREA.
DEPTH OF COVER, IF KNOWN IS INDICATIVE ONLY
EXPOSURE BY HAND IS MANDATORY PH : 1300 769 345



SCALE

1 : 250 @ A1



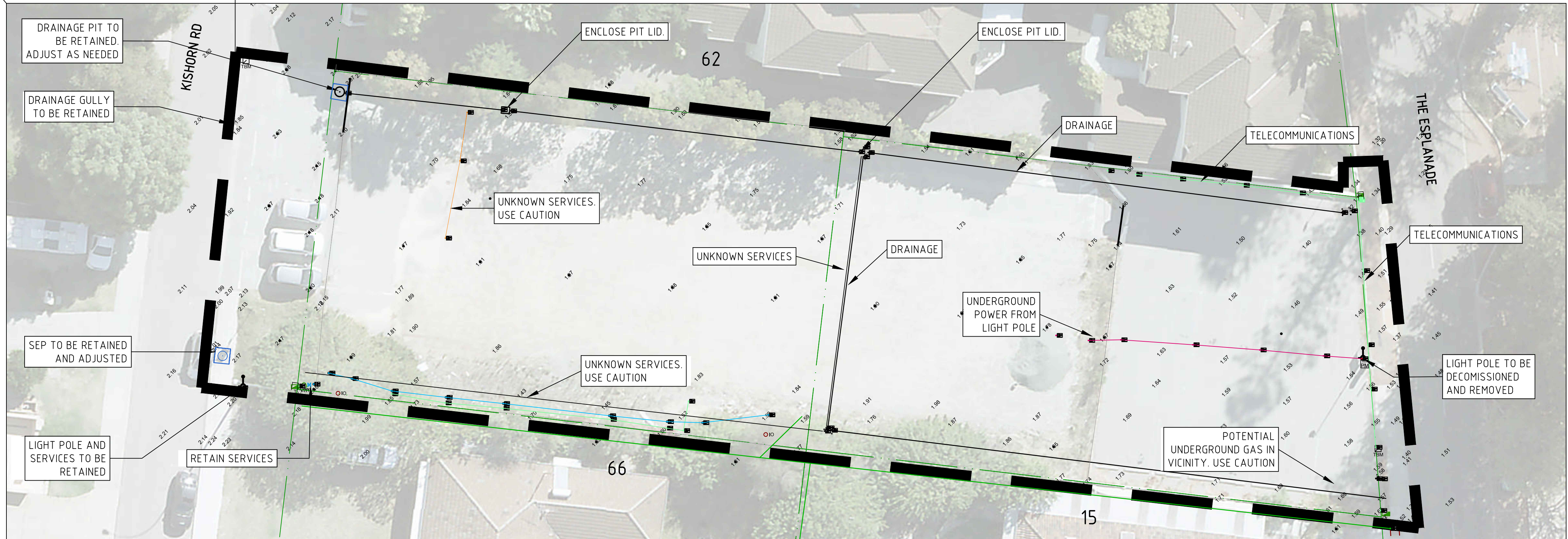
METRES

SURVEYED	MNG	AUG 2023
DESIGNED	B DAVIS	OCTOBER 2023
DRAWN	N NICHOLLS	NOV 2024
CHECKED	J AHOLA	NOV 2024

PROJECT NUMBER	----
APPROVED	J AHOLA --/--/----

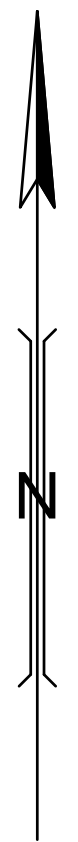
ESPLANADE PARK
PUBLIC OPEN SPACE
INDEX & OVERVIEW

CAD FILE Esplanade Park.dwg	
DRAWING STATUS FOR TENDER	SHEET 1 of 8
PLAN No. 8136A1-24PG	AMENDMENT 0



LEGEND

- SITE BOUNDARY
- TT AMCOM
- G GAS
- GG GAS MAJOR
- UGP POWER
- S SEWER
- TT TELECOM MAJOR
- T TELECOM
- W WATERCORP
- D WATERCORP MAIN DRAIN
- D EXISTING DRAINAGE LINE
- - - - - UNKNOWN SERVICE
- ⊙ EXISTING MANHOLE
- EXISTING SIDE ENTRY PIT
- ▢ EXISTING GRATE



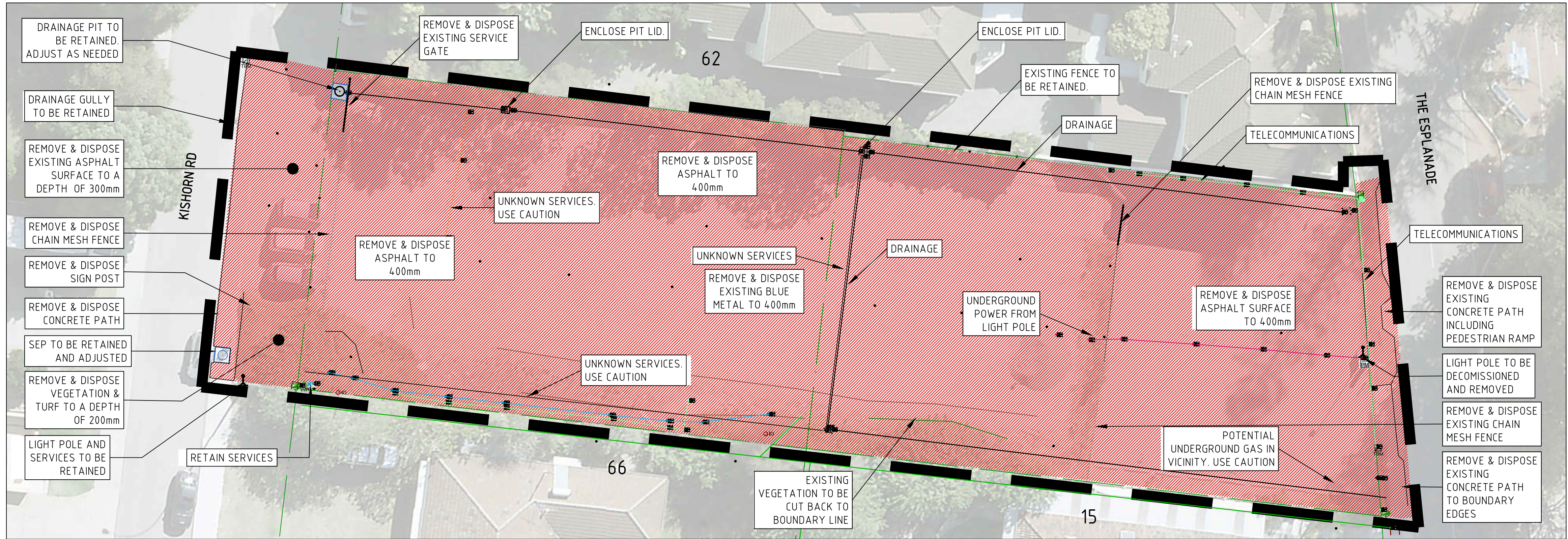
NOTES

SERVICE LOCATIONS ARE INDICATIVE ONLY.
CONTRACTOR TO UNDERTAKE SERVICE LOCATION, POT-HOLING AND "BEFORE YOU DIG AUSTRALIA" INVESTIGATION PRIOR TO COMMENCEMENT OF WORKS

FOR SETOUT REFER TO PLAN 8138A1-24PG

SERVICES PLAN

SCALE 1 : 200



NOTES

- TRAFFIC MANAGEMENT
Ensure traffic management during construction conforms to current acts, regulations and Australian Standards relating to worksite traffic management. Keep site safe and accessible for workers, pedestrians, and road users at all times.
- SET OUT AND DIMENSIONS.
a) Written dimensions shall take precedence over scaled.
b) Check all drawing scales in conjunction with original drawing size.
- SERVICES AND EXISTING SITE FEATURES
a) Locate all existing services and mark out prior to works.
b) Locate existing trees and site features to be retained.
c) Take all necessary measures to protect all services and existing site features.
d) Take all necessary measures to protect existing trees within and adjacent to the work area prior to commencement of works.
e) All work within driplines of existing trees to be done by hand.
f) Inform the City's Representative and gain prior approval for cutting roots 50mm diameter or greater.
g) Any damage shall be rectified at contractor's cost.
h) Services are shown in their approximate location. Domestic services are not shown. Locate all services by hand digging before excavation. Provide adequate support and protection for exposed services.
- REFERENCE
a) Refer to CoM standard specifications and drawings prior to and during the works.
- DISCREPANCIES
Notify the City of any suspected or known discrepancies or errors prior to the ordering of affected materials and/or construction of affected works.
- RELEVANT STANDARDS
Undertake all pricing and works in accordance with current industry best practice and relevant Australian Standards.
- INSTALLATION
Install trees and plants as per CoM Planting Standards and Notes on Details Page.

FOR SETOUT REFER TO PLAN 8138A1-24PG

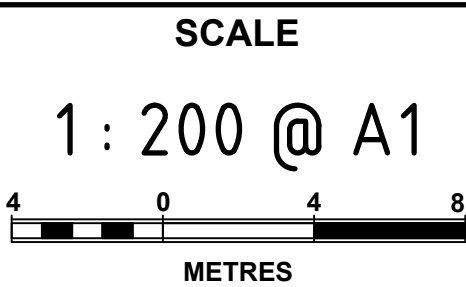
DEMOLITION PLAN

SCALE 1 : 200

DEMOLITION APPROX. 2300m²
Remove and dispose all hard surface and spoil, including turf and greenwaste.

CAUTION
OPTIC FIBRE
CABLES IN AREA

WARNING
HIGH VOLTAGE WESTERN POWER UGP IN AREA.
DEPTH OF COVER, IF KNOWN IS INDICATIVE ONLY
EXPOSURE BY HAND IS MANDATORY PH: 1300 769 345

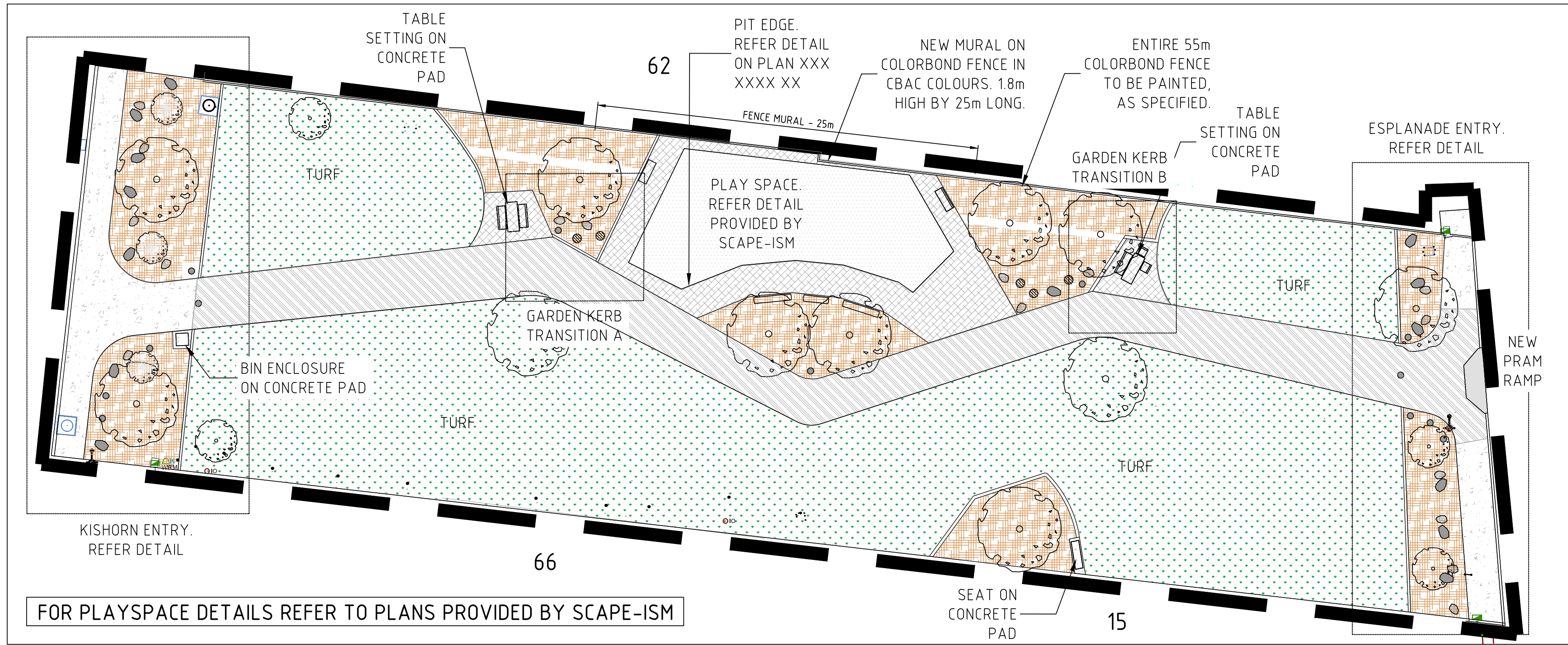


SURVEYED	MNG	AUG 2023
DESIGNED	B DAVIS	OCTOBER 2023
DRAWN	N NICHOLLS	NOV 2024
CHECKED	J AHOLA	NOV 2024

PROJECT NUMBER	---
APPROVED	J AHOLA

ESPLANADE PARK
PUBLIC OPEN SPACE
SERVICES & DEMOLITION

CAD FILE	Esplanade Park.dwg
DRAWING STATUS	FOR TENDER
PLAN No.	8137A1-24PG
SHEET	2 of 8
AMENDMENT	0



SETOUT PLAN

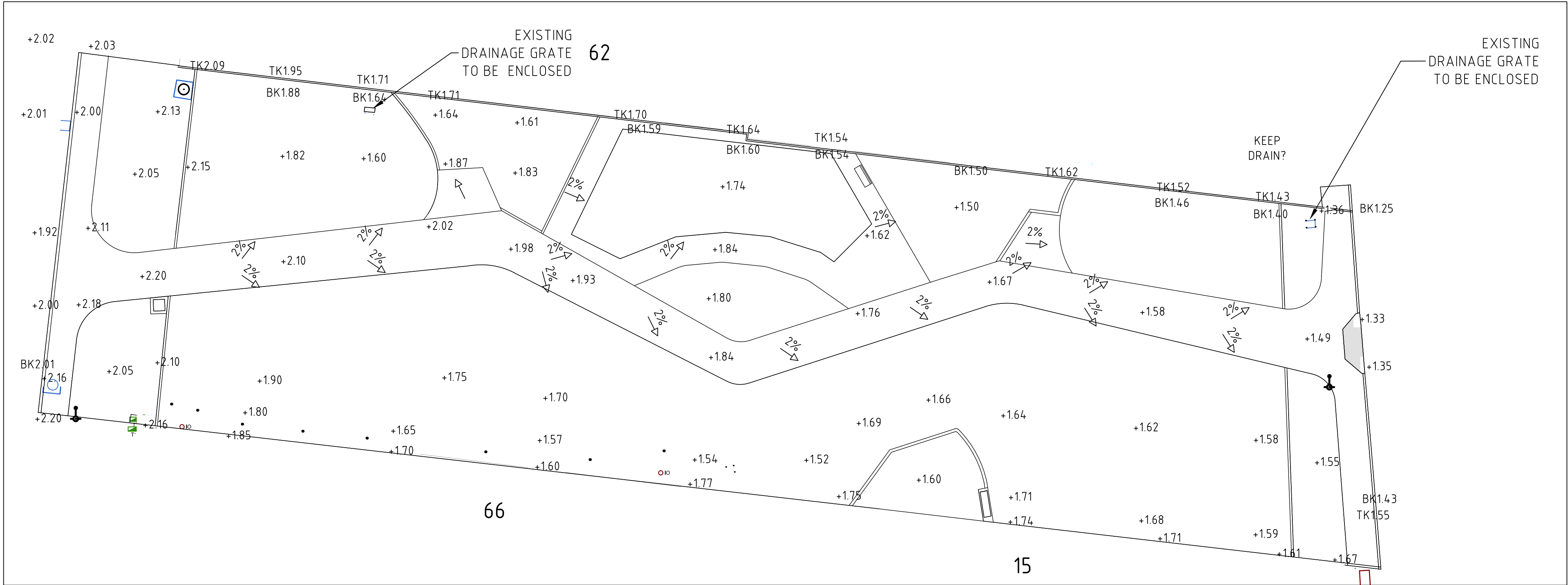
SCALE 1: 200

LEGEND

- SITE BOUNDARY
- NEW TREE - 15
Refer Landscape Schedule on Plan xxx xxx xxx.
- NEW FEATURE PLANT - 3
Refer Landscape Schedule on Plan xxx xxx xxx.
- BOULDER - 30
2 Sizes. Refer quantities and details on plan 8141A1-24PG "Furniture and Fixtures".
- GARDEN BED 395m²
Plants, soil improver and mulch, as specified.
- TURF 1187m²
Roll on turf, as specified.

HARD SURFACES

- PAVING 1 (LIGHTER) 107m²
.100mm Exposed aggregate concrete.
10-30mm mora quartz. Shot blast finish.
100g of Charcoal Oxide to 50kg of concrete.
- PAVING 2 (LIGHTER) 287m²
150mm Steel reinforced, exposed aggregate concrete.10-30mm mora quartz. Shot blast finish.
100g of Charcoal Oxide to 50kg of concrete.
- PAVING 3 (DARKER) 115m²
.100mm Exposed aggregate concrete.
10-30mm mora quartz. Shot blast finish.
2kg of Charcoal Oxide to 50kg of concrete.
- SOFTFALL SAND 130m²
Clean quartz sand. To a depth of 300mm.
Refer specification.



DRAINAGE & FINISHED LEVELS

SCALE 1: 200

NOTES

- TRAFFIC MANAGEMENT
Ensure traffic management during construction conforms to current acts, regulations and Australian Standards relating to worksite traffic management. Keep site safe and accessible for workers, pedestrians, and road users at all times.
- SET OUT AND DIMENSIONS.
a) Written dimensions shall take precedence over scaled.
b) Check all drawing scales in conjunction with original drawing size.
- SERVICES AND EXISTING SITE FEATURES
a) Locate all existing services and mark out prior to works.
b) Locate existing trees and site features to be retained.
c) Take all necessary measures to protect all services and existing site features.
d) Take all necessary measures to protect existing trees within and adjacent to the work area prior to commencement of works.
d) All work within driplines of existing trees to be done by hand.
e) Inform the City's Representative and gain prior approval for cutting roots 50mm diameter or greater.
f) Any damage shall be rectified at contractor's cost.
g) Services are shown in their approximate location. Domestic services are not shown. Locate all services by hand digging before excavation. Provide adequate support and protection fort exposed services.
- REFERENCE
a) Refer to CoM standard specifications and drawings prior to and during the works.
- DISCREPANCIES
Notify the City of any suspected or known discrepancies or errors prior to the ordering of affected materials and/or construction of affected works.
- RELEVANT STANDARDS
Undertake all pricing and works in accordance with current industry best practice and relevant Australian Standards.
- INSTALLATION
Install trees and plants as per CoM Planting Standards and Notes on Details Page.

CAUTION
OPTIC FIBRE
CABLES IN AREA

WARNING
HIGH VOLTAGE WESTERN POWER UGP IN AREA.
DEPTH OF COVER, IF KNOWN IS INDICATIVE ONLY.
EXPOSURE BY HAND IS MANDATORY PH : 1300 769 345



SCALE
1: 200 @ A1
METRES

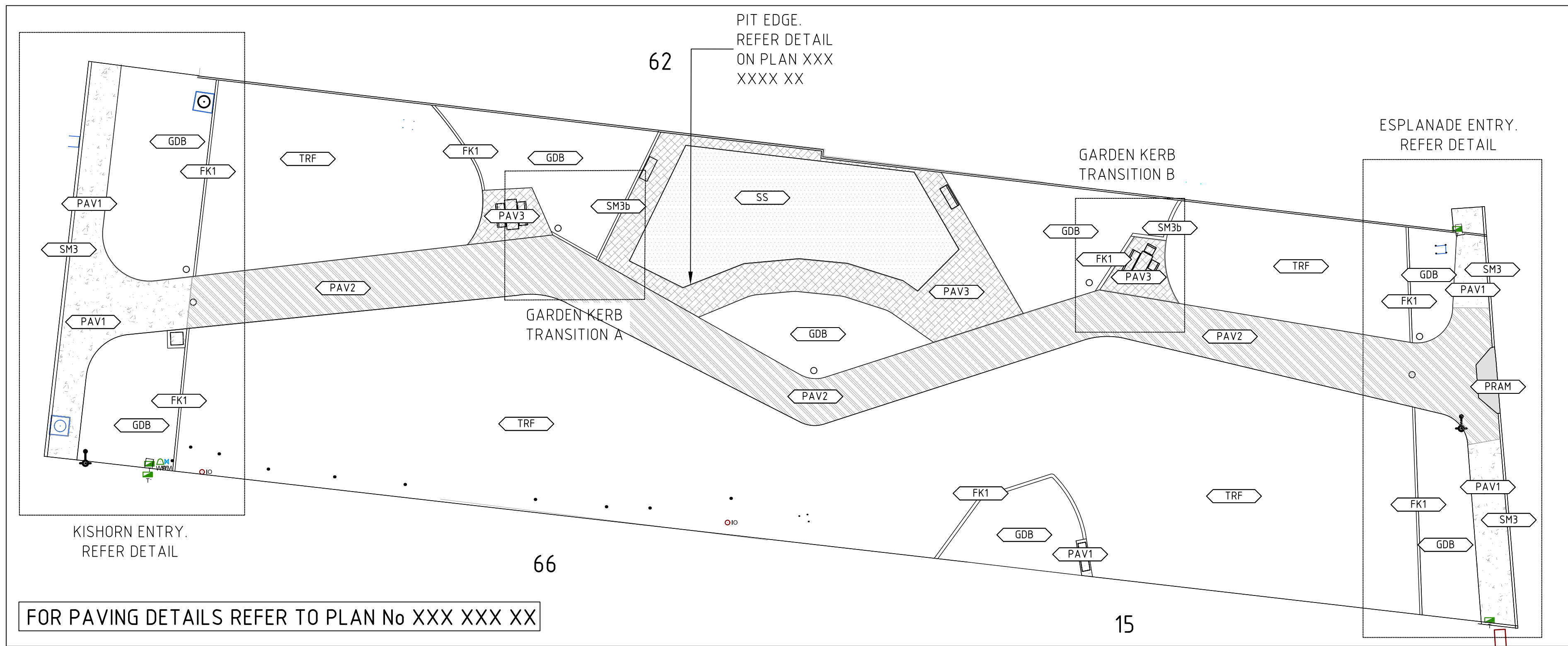
SURVEYED
MNG AUG 2023
DESIGNED
B DAVIS OCTOBER 2023
DRAWN
N NICHOLLS NOV 2024
CHECKED
J AHOLA NOV 2024

PROJECT NUMBER

APPROVED
J AHOLA
--/--/----

ESPLANADE PARK
PUBLIC OPEN SPACE
SETOUT & GRADING

CAD FILE
Esplanade Park.dwg
DRAWING STATUS
FOR TENDER
PLAN No.
8138A1-24PG
SHEET
3 of 8
AMENDMENT
0



LEGEND:

- GDB GARDEN BED - REFER SOFT LANDSCAPE PLAN, DETAILS AND SPECIFICATION
- TRF TURF - REFER SOFT LANDSCAPE PLAN, DETAILS AND SPECIFICATION
- PRAM PEDESTRIAN RAMP, 3m REFER CITY STANDARD DETAIL AND PROJECT SPECIFICATION
- PAV1 100mm GREY CONCRETE PAVING, EXPOSED AGGREGATE REFER DETAILS AND SPECIFICATION
- PAV2 150mm REINFORCED GREY CONCRETE PAVING, EXPOSED AGGREGATE REFER DETAILS AND SPECIFICATION
- PAV3 DARKER GREY CONCRETE PAVING, EXPOSED AGGREGATE REFER DETAILS AND SPECIFICATION
- SS SOFTFALL SAND - REFER PLAYSPACE DETAILS AND SPECIFICATION
- SM3 SEMI-MOUNTABLE KERB REFER DETAILS AND SPECIFICATION
- FK1 FLUSH KERB, 200mm REFER DETAILS AND SPECIFICATION
- SM3b SEMI-MOUNTABLE KERB, 200mm REFER DETAILS AND SPECIFICATION

HARD SURFACES

- PAVING 1 (LIGHTER) 107m²
.100mm Exposed aggregate concrete.
10-30mm mora quartz. Shot blast finish.
100g of Charcoal Oxide to 50kg of concrete.
- PAVING 2 (LIGHTER) 287m²
.150mm Steel reinforced, exposed aggregate concrete.10-30mm mora quartz. Shot blast finish.
100g of Charcoal Oxide to 50kg of concrete.
- PAVING 3 (DARKER) 115m²
.100mm Exposed aggregate concrete.
10-30mm mora quartz. Shot blast finish.
2kg of Charcoal Oxide to 50kg of concrete.
- SOFTFALL SAND 130m²
Clean quartz sand. To a depth of 300mm.
Refer specification.

PAVING FINISHES PLAN

SCALE 1 : 200

NOTES

- TRAFFIC MANAGEMENT
Ensure traffic management during construction conforms to current acts, regulations and Australian Standards relating to worksite traffic management. Keep site safe and accessible for workers, pedestrians, and road users at all times.
- SET OUT AND DIMENSIONS.
a) Written dimensions shall take precedence over scaled.
b) Check all drawing scales in conjunction with original drawing size.
- SERVICES AND EXISTING SITE FEATURES
a) Locate all existing services and mark out prior to works.
b) Locate existing trees and site features to be retained.
c) Take all necessary measures to protect all services and existing site features.
d) Take all necessary measures to protect existing trees within and adjacent to the work area prior to commencement of works.
e) All work within driplines of existing trees to be done by hand.
f) Inform the City's Representative and gain prior approval for cutting roots 50mm diameter or greater.
g) Any damage shall be rectified at contractor's cost.
h) Services are shown in their approximate location. Domestic services are not shown. Locate all services by hand digging before excavation. Provide adequate support and protection fort exposed services.
- REFERENCE
a) Refer to CoM standard specifications and drawings prior to and during the works.
- DISCREPANCIES
Notify the City of any suspected or known discrepancies or errors prior to the ordering of affected materials and/or construction of affected works.
- RELEVANT STANDARDS
Undertake all pricing and works in accordance with current industry best practice and relevant Australian Standards.
- INSTALLATION
Install trees and plants as per CoM Planting Standards and Notes on Details Page.

PAVING NOTES:

ALL CONCRETE SHALL COMPLY WITH AS1379-1997 AND SHALL BE N25 WITH 14mm STONE AND MIN 60mm SLUMP TO 80mm MAX.

CONTROL JOINTS SHALL BE FORMED AT SPECIFIED SPACINGS - SEE TABLE 1. PREFERRED MATERIAL SHALL BE THE LOCK JOINT AUSTRALIA "LOCK JOINT" PRODUCT OR AS DIRECTED BY THE PRINCIPLE.

EXPANSION JOINTS SHALL BE CANITE STRIPS PLACED EVERY 50m IN A STRAIGHT OR UNHINDERED PATH OR AT THE START OF A CURVE IN A PATH.

EACH JOINT SHALL BE TOOLED SMOOTH ON EACH SIDE.

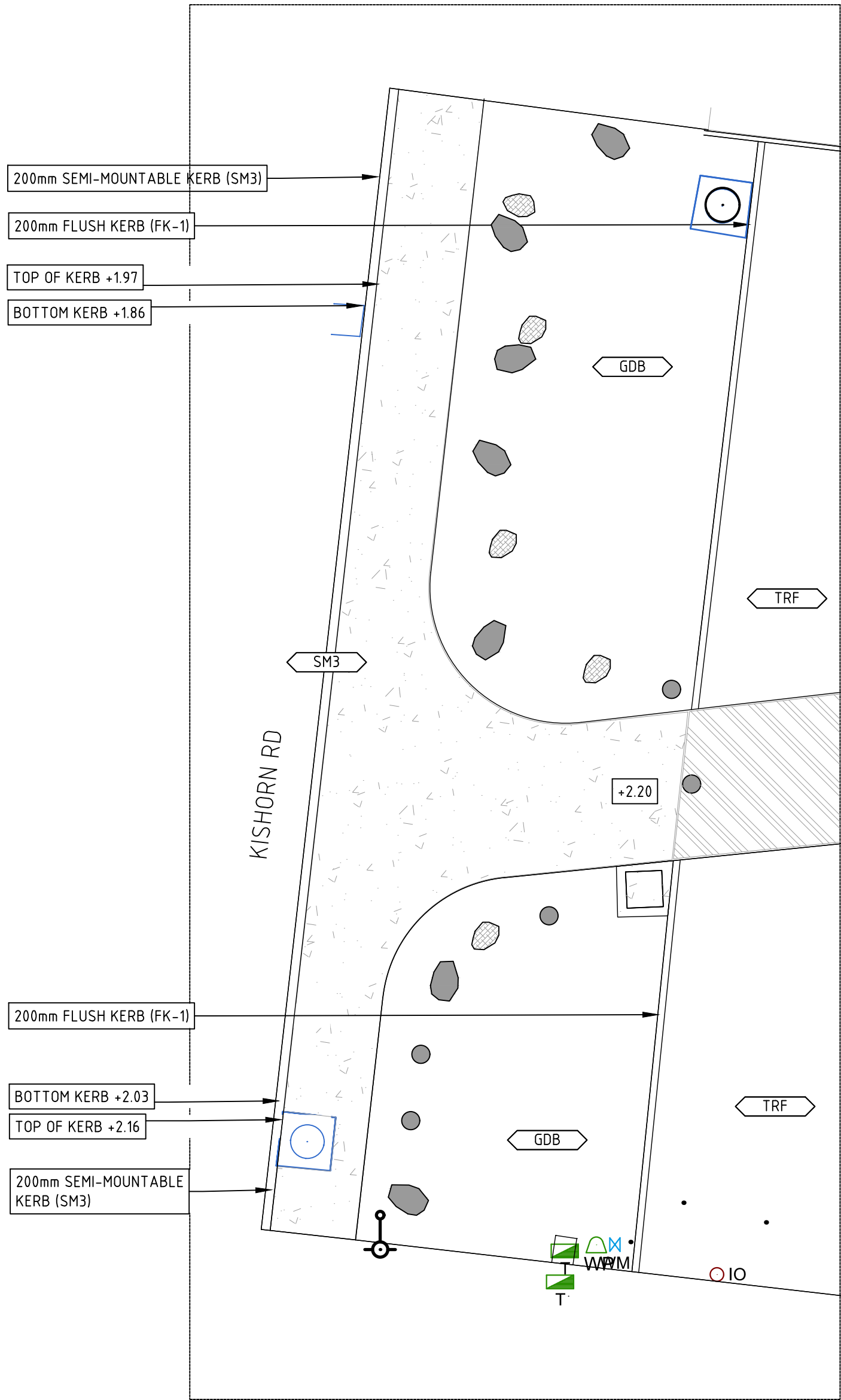
THE FINISHED SURFACE OF FOOTPATHS SHALL SLOPE TYPICALLY TOWARDS THE ROAD AT A 2% GRADIENT. GRADIENTS STEEPER THAN THIS REQUIRE APPROVAL FROM PRINCIPLE.

CONCRETE SHALL COMPLY WITH AS3600 AND HAVE A MIN COMPRESSIVE STRENGTH AT 28 DAYS OF 25MP_a AND A MIN DEPTH OF 100mm.

ALL DISTURBED GROUND SHALL BE COMPACTED TO 95% MODIFIED MAXIMUM DRY DENSITY AND REINSTATED TO CITY OF MELVILLE STANDARDS.

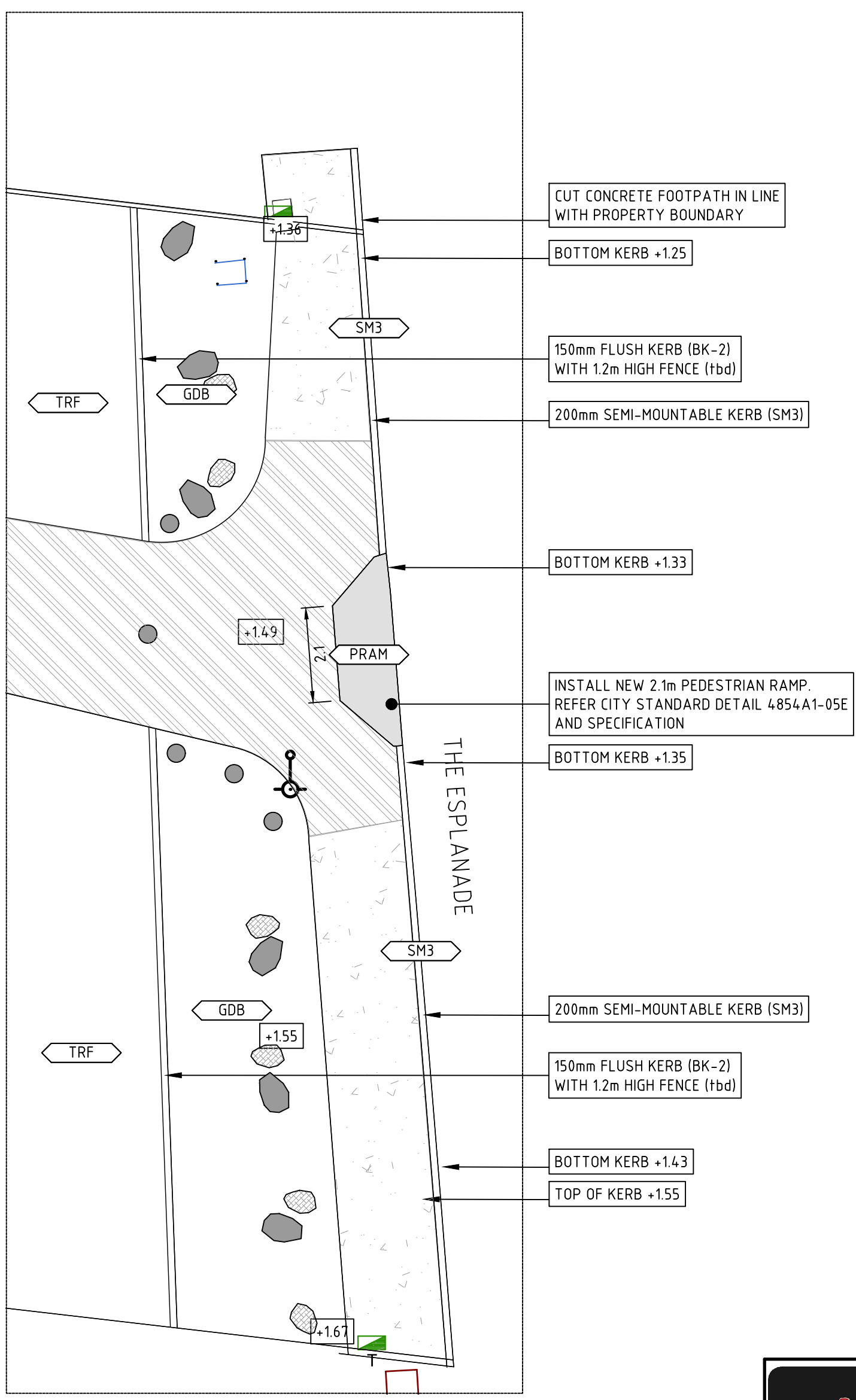
RUBBER GASKET OR CANITE SHALL BE INSTALLED AROUND ALL SERVICES AS SPECIFIED BY SUPERINTENDENT.

A CANITE STRIP SHALL BE INSTALLED BETWEEN ALL PAVING, CONCRETE AND OTHER HARD SURFACES.



PAVING - KISHORN ENTRY

SCALE 1 : 100



PAVING - ESPLANADE ENTRY

SCALE 1 : 100



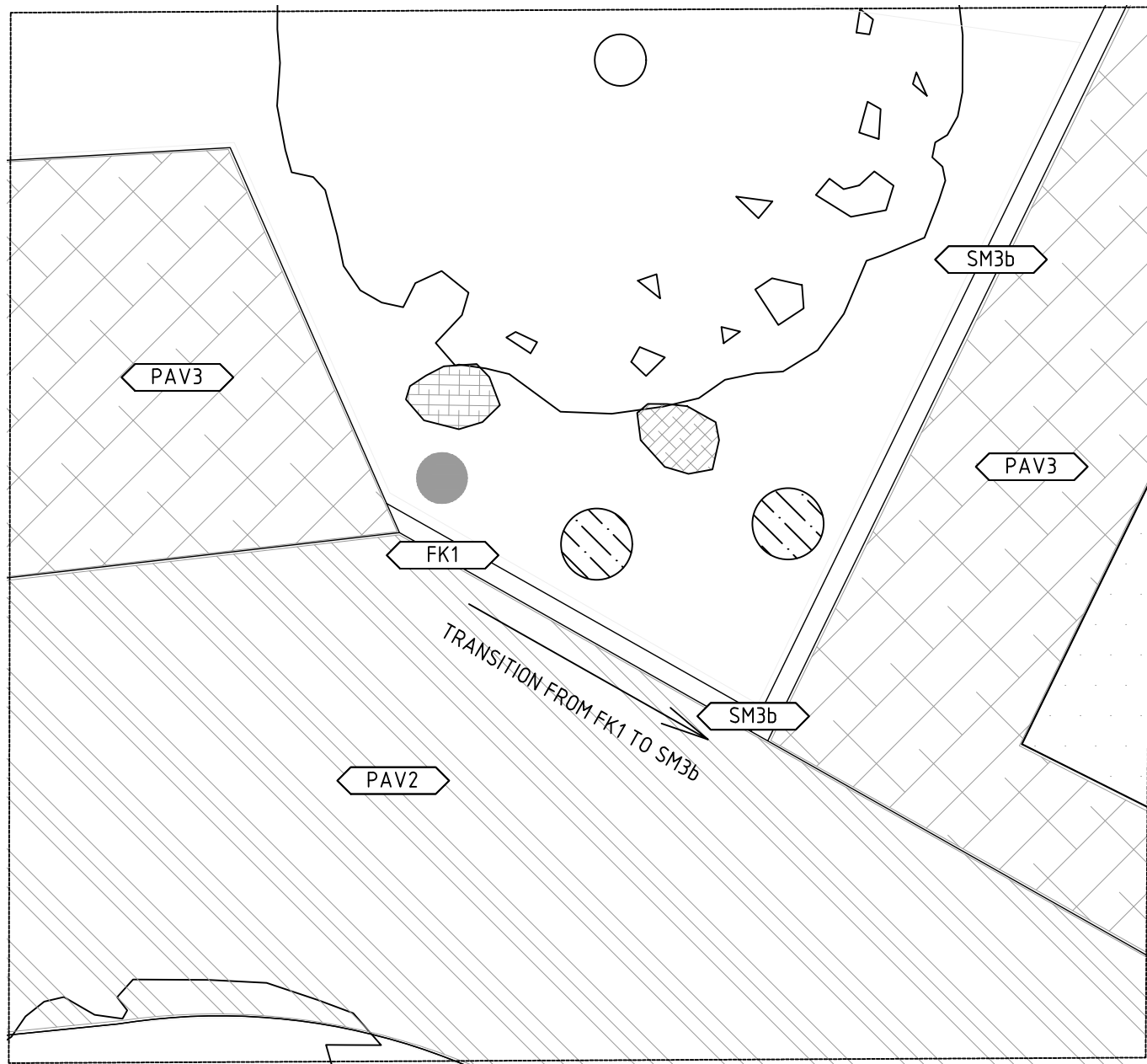
SCALE
AS SHOWN

SURVEYED	MNG	AUG 2023
DESIGNED	B DAVIS	OCTOBER 2023
DRAWN	N NICHOLLS	NOV 2024
CHECKED	J AHOLA	NOV 2024

PROJECT NUMBER	---
APPROVED	J AHOLA

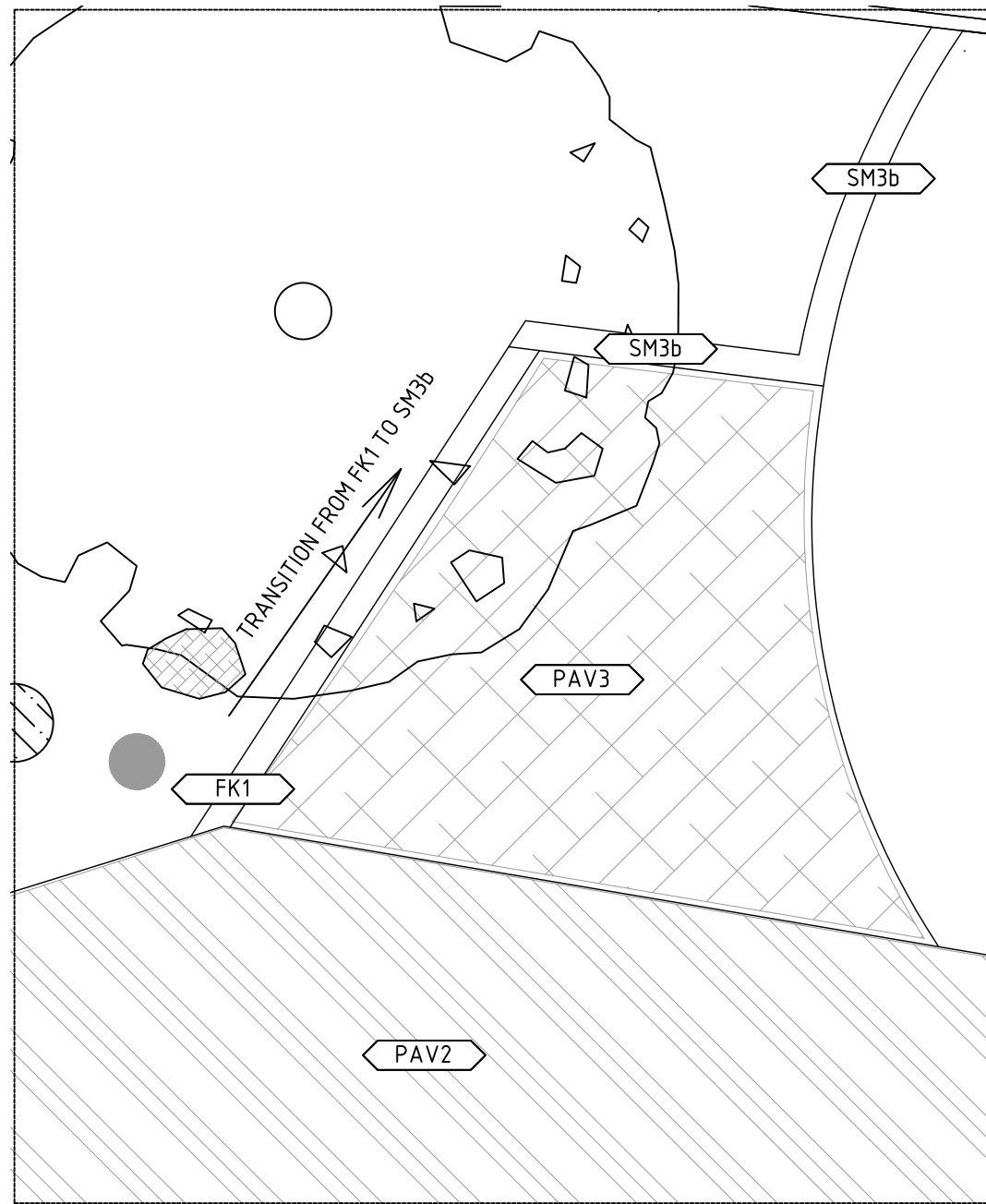
ESPLANADE PARK
PUBLIC OPEN SPACE
PAVING PLAN

CAD FILE	Esplanade Park.dwg
DRAWING STATUS	FOR TENDER
PLAN No.	8139A1-24PG
SHEET	4 of 8
AMENDMENT	0



GARDEN KERB TRANSITION A

SCALE 1 : 50



GARDEN KERB TRANSITION B

SCALE 1 : 50

LEGEND:

- GDB GARDEN BED - REFER SOFT LANDSCAPE PLAN, DETAILS AND SPECIFICATION
- TRF TURF - REFER SOFT LANDSCAPE PLAN, DETAILS AND SPECIFICATION
- PRAM PEDESTRIAN RAMP, 3m REFER CITY STANDARD DETAIL AND PROJECT SPECIFICATION
- PAV1 100mm GREY CONCRETE PAVING, EXPOSED AGGREGATE REFER DETAILS AND SPECIFICATION
- PAV2 150mm REINFORCED GREY CONCRETE PAVING, EXPOSED AGGREGATE REFER DETAILS AND SPECIFICATION
- PAV3 DARKER GREY CONCRETE PAVING, EXPOSED AGGREGATE REFER DETAILS AND SPECIFICATION
- SS SOFTFALL SAND - REFER PLAYSPACE DETAILS AND SPECIFICATION
- SM3 SEMI-MOUNTABLE KERB REFER DETAILS AND SPECIFICATION
- FK1 FLUSH KERB, 200mm REFER DETAILS AND SPECIFICATION
- SM3b SEMI-MOUNTABLE KERB, 200mm REFER DETAILS AND SPECIFICATION

HARD SURFACES

- PAVING 1 (LIGHTER) 107m²
.100mm Exposed aggregate concrete.
10-30mm mora quartz. Shot blast finish.
100g of Charcoal Oxide to 50kg of concrete.
- PAVING 2 (LIGHTER) 287m²
.150mm Steel reinforced, exposed aggregate concrete.10-30mm mora quartz. Shot blast finish.
100g of Charcoal Oxide to 50kg of concrete.
- PAVING 3 (DARKER) 115m²
.100mm Exposed aggregate concrete.
10-30mm mora quartz. Shot blast finish.
2kg of Charcoal Oxide to 50kg of concrete.
- SOFTFALL SAND 130m²
Clean quartz sand. To a depth of 300mm.
Refer specification.

PAVING NOTES:

ALL CONCRETE SHALL COMPLY WITH AS1379-1997 AND SHALL BE N25 WITH 14mm STONE AND MIN 60mm SLUMP TO 80mm MAX.

CONTROL JOINTS SHALL BE FORMED AT SPECIFIED SPACINGS - SEE TABLE 1. PREFERRED MATERIAL SHALL BE THE LOCK JOINT AUSTRALIA "LOCK JOINT" PRODUCT OR AS DIRECTED BY THE PRINCIPLE.

EXPANSION JOINTS SHALL BE CANITE STRIPS PLACED EVERY 50m IN A STRAIGHT OR UNHINDERED PATH OR AT THE START OF A CURVE IN A PATH.

EACH JOINT SHALL BE TOOLED SMOOTH ON EACH SIDE.

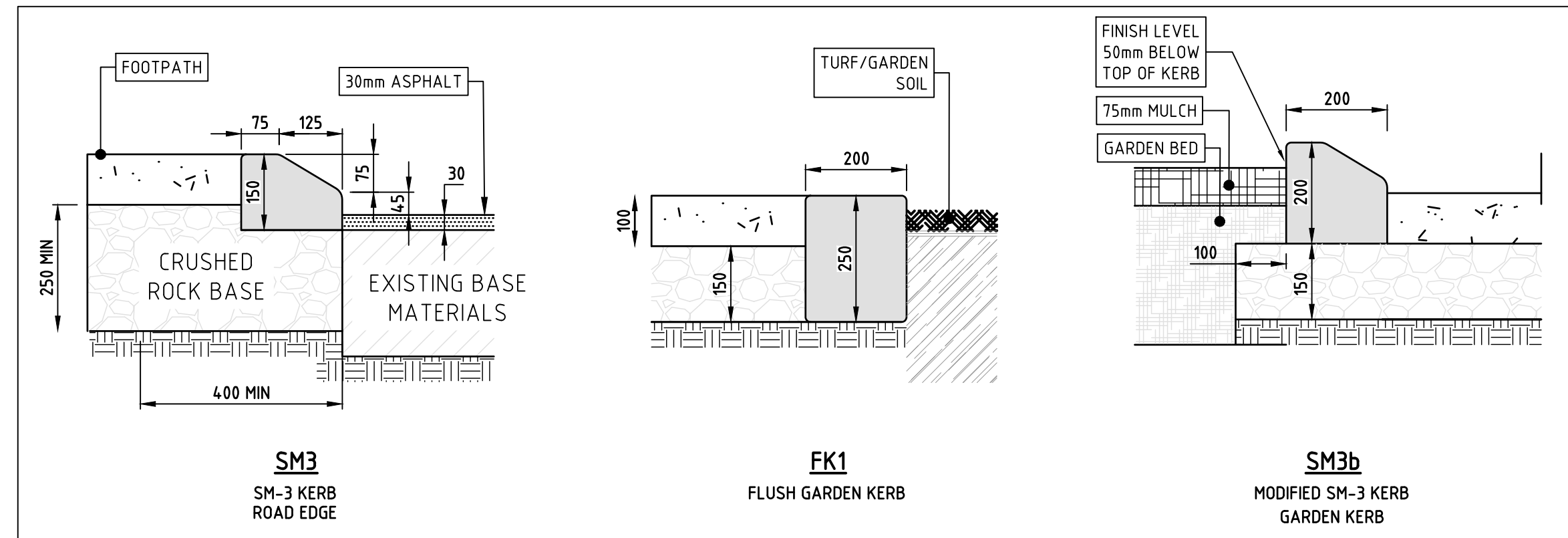
THE FINISHED SURFACE OF FOOTPATHS SHALL SLOPE TYPICALLY TOWARDS THE ROAD AT A 2% GRADIENT. GRADIENTS STEEPER THAN THIS REQUIRE APPROVAL FROM PRINCIPLE.

CONCRETE SHALL COMPLY WITH AS3600 AND HAVE A MIN COMPRESSIVE STRENGTH AT 28 DAYS OF 25MPa AND A MIN DEPTH OF 100mm.

ALL DISTURBED GROUND SHALL BE COMPACTED TO 95% MODIFIED MAXIMUM DRY DENSITY AND REINSTATED TO CITY OF MELVILLE STANDARDS.

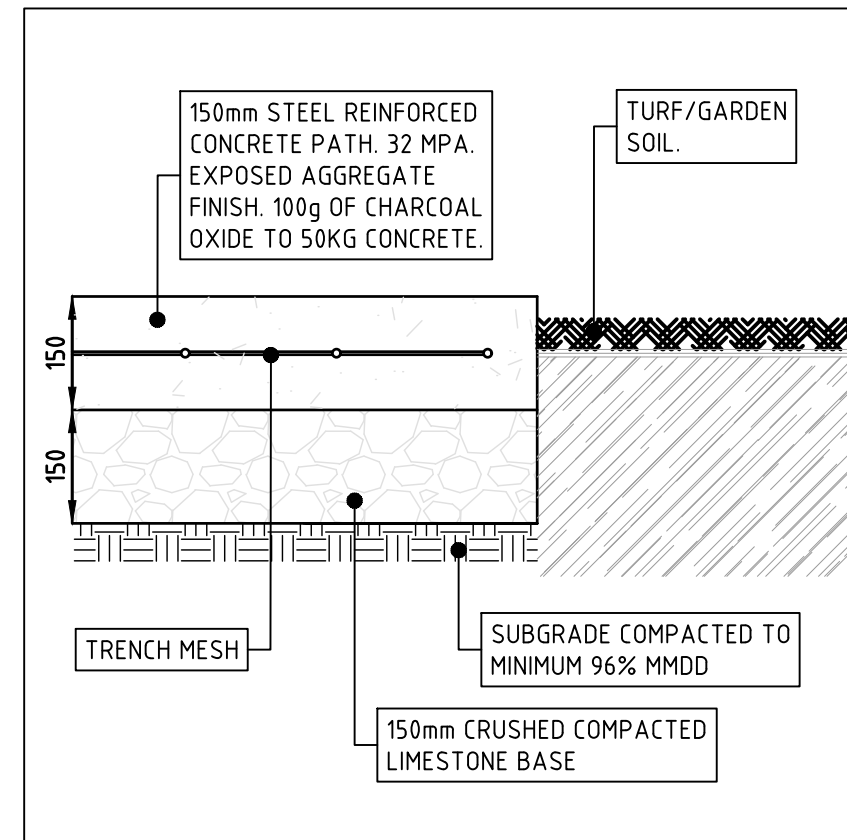
RUBBER GASKET OR CANITE SHALL BE INSTALLED AROUND ALL SERVICES AS SPECIFIED BY SUPERINTENDENT.

A CANITE STRIP SHALL BE INSTALLED BETWEEN ALL PAVING, CONCRETE AND OTHER HARD SURFACES.



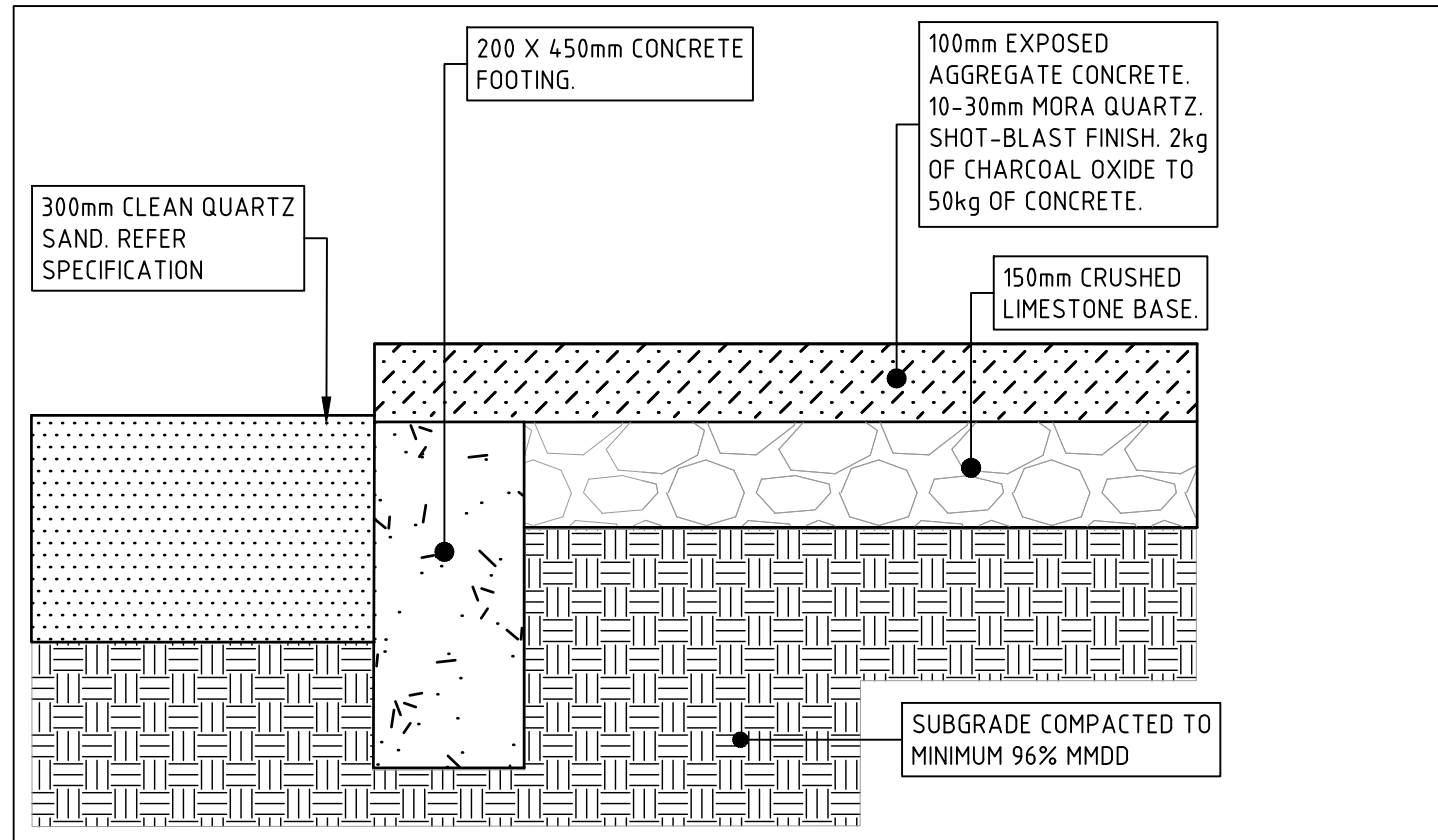
KERB DETAILS

SCALE 1 : 10



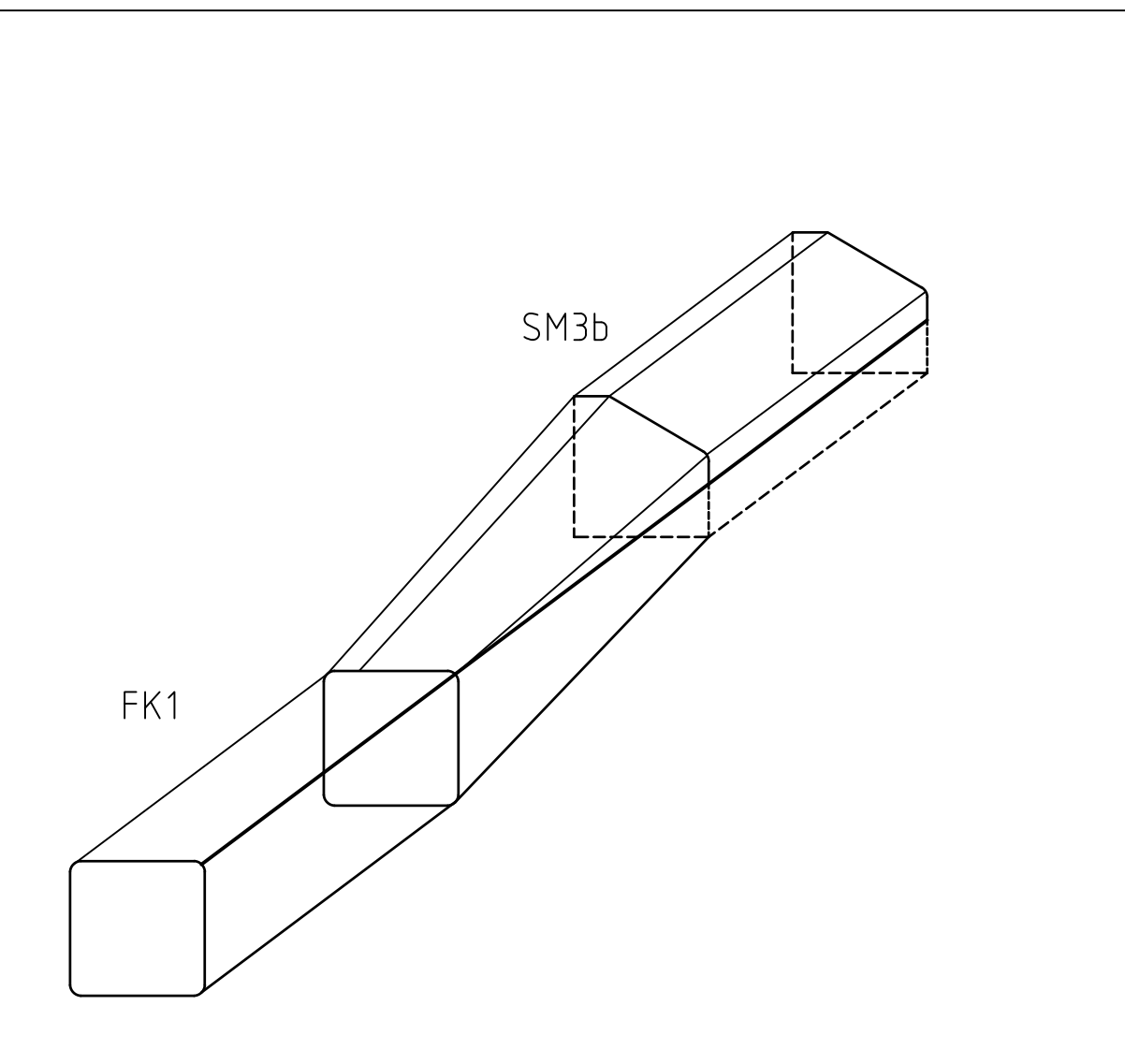
PATH DETAIL

SCALE 1 : 10



PIT EDGE DETAIL

SCALE 1 : 10



KERB TRANSITION

SCALE 1 : 10

CAUTION
OPTIC FIBRE
CABLES IN AREA

WARNING

HIGH VOLTAGE WESTERN POWER UGP IN AREA.
DEPTH OF COVER, IF KNOWN IS INDICATIVE ONLY
EXPOSURE BY HAND IS MANDATORY PH : 1300 769 345

FOR FURNITURE LOCATIONS REFER TO PLAN No 8141A1-24PG

NOTES

1. TRAFFIC MANAGEMENT
Ensure traffic management during construction conforms to current acts, regulations and Australian Standards relating to worksite traffic management. Keep site safe and accessible for workers, pedestrians, and road users at all times.

2. SET OUT AND DIMENSIONS.
a) Written dimensions shall take precedence over scaled.
b) Check all drawing scales in conjunction with original drawing size.

3. SERVICES AND EXISTING SITE FEATURES
a) Locate all existing services and mark out prior to works.
b) Locate existing trees and site features to be retained.
c) Take all necessary measures to protect all services and existing site features.
d) Take all necessary measures to protect existing trees within and adjacent to the work area prior to commencement of works.
e) All work within driplines of existing trees to be done by hand.
f) Inform the City's Representative and gain prior approval for cutting roots 50mm diameter or greater.
g) Any damage shall be rectified at contractor's cost.
h) Services are shown in their approximate location. Domestic services are not shown. Locate all services by hand digging before excavation. Provide adequate support and protection fort exposed services.

4. REFERENCE
a) Refer to CoM standard specifications and drawings prior to and during the works.

5. DISCREPANCIES
Notify the City of any suspected or known discrepancies or errors prior to the ordering of affected materials and/or construction of affected works.

6. RELEVANT STANDARDS
Undertake all pricing and works in accordance with current industry best practice and relevant Australian Standards.

7. INSTALLATION
Install trees and plants as per CoM Planting Standards and Notes on Details Page.



SCALE
1 : 250 @ A1
5 0 5 10
METRES

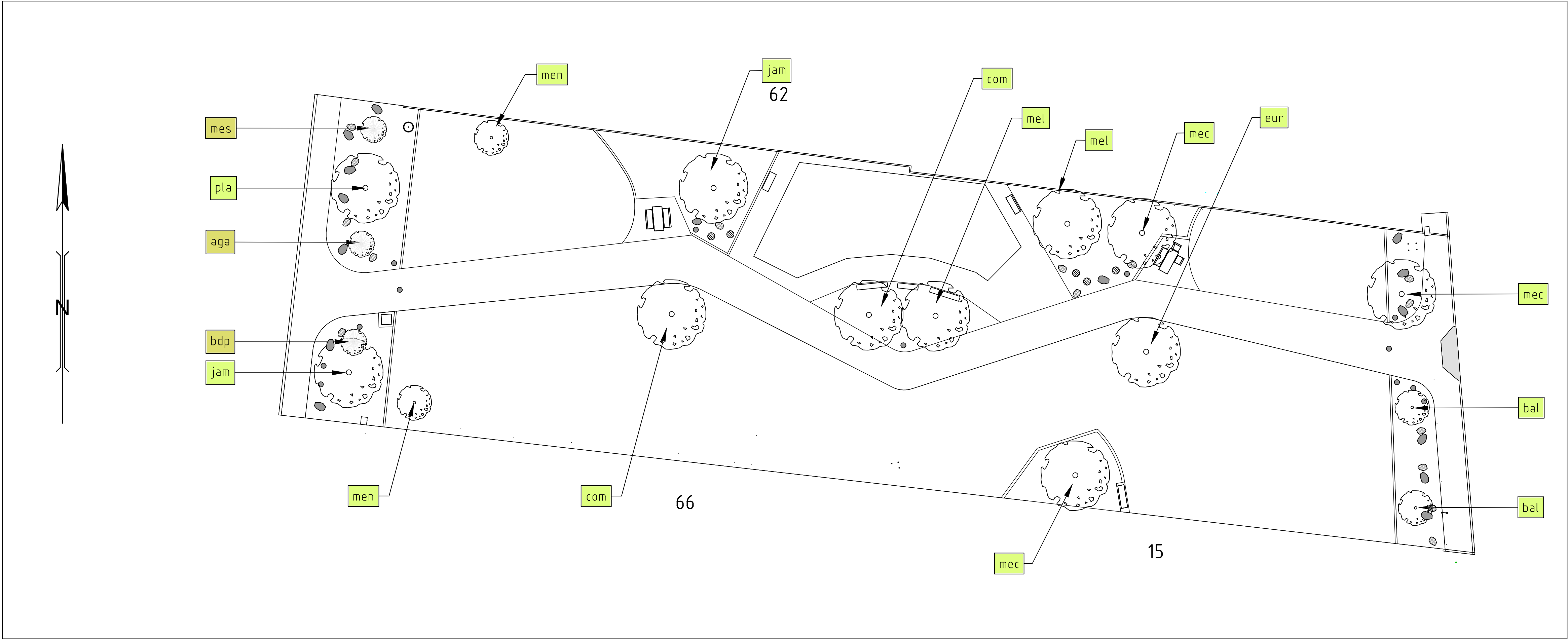
SURVEYED
MNG AUG 2023
DESIGNED
B DAVIS OCTOBER 2023
DRAWN
N NICHOLLS NOV 2024
CHECKED
J AHOLA NOV 2024

PROJECT NUMBER

APPROVED
J AHOLA
--/--/----

ESPLANADE PARK
PUBLIC OPEN SPACE
PAVING DETAILS

CAD FILE
Esplanade Park.dwg
DRAWING STATUS
FOR TENDER
PLAN No.
8140A1-24PG
SHEET
5 of 8
AMENDMENT
0



LEGEND:

NEW TREE - REFER TO LANDSCAPE PLANS, DETAILS AND SPECIFICATION

NEW FEATURE PLANT - REFER TO LANDSCAPE PLANS, DETAILS AND SPECIFICATION

SMALL BOULDER. REFER PLAN 8141A1-24PG

LARGE BOULDER. REFER PLAN 8141A1-24PG

FOR PLANT MIXES AND QUANTITIES REFER PLAN 8143A1-24PG

- NOTES
1. TRAFFIC MANAGEMENT

Ensure traffic management during construction conforms to current acts, regulations and Australian Standards relating to worksite traffic management. Keep site safe and accessible for workers, pedestrians, and road users at all times.
2. SET OUT AND DIMENSIONS.

a) Written dimensions shall take precedence over scaled.
b) Check all drawing scales in conjunction with original drawing size.
3. SERVICES AND EXISTING SITE FEATURES

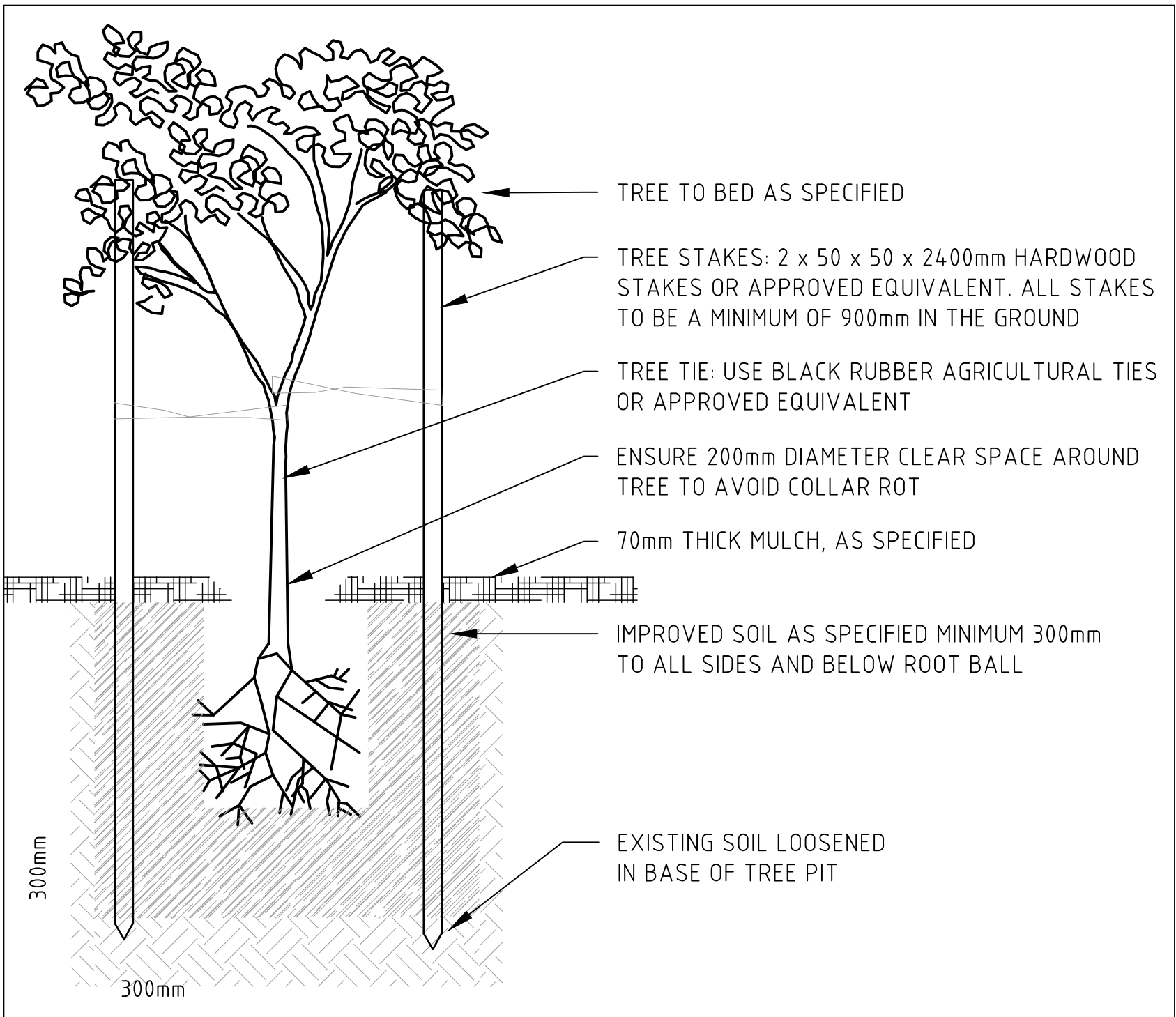
a) Locate all existing services and mark out prior to works.
b) Locate existing trees and site features to be retained.
c) Take all necessary measures to protect all services and existing site features.
d) Take all necessary measures to protect existing trees within and adjacent to the work area prior to commencement of works.
e) All work within driplines of existing trees to be done by hand.
f) Inform the City's Representative and gain prior approval for cutting roots 50mm diameter or greater.
g) Any damage shall be rectified at contractor's cost.
h) Services are shown in their approximate location. Domestic services are not shown. Locate all services by hand digging before excavation. Provide adequate support and protection for exposed services.
4. REFERENCE

a) Refer to CoM standard specifications and drawings prior to and during the works.
5. DISCREPANCIES

Notify the City of any suspected or known discrepancies or errors prior to the ordering of affected materials and/or construction of affected works.
6. RELEVANT STANDARDS

Undertake all pricing and works in accordance with current industry best practice and relevant Australian Standards.
7. INSTALLATION

Install trees and plants as per CoM Planting Standards and Notes on Details Page.



TYPICAL TREE DETAIL

NOT TO SCALE

TOPSOIL FOR BEDS:
ECLIPSE SOILS FOGO BLENDED TOPSOIL
Applied to manufacturer's specification

SOIL AMENDMENTS PRE-PLANTING:
ECLIPSE SOILS FOGO SOIL CONDITIONER
Applied to manufacturer's specification

SOIL AMENDMENTS FOR PLANTING:
BENEFICIAL PLANT MICROBES
GrowSafe Spreadable Soil Microbes
Water in 10-30g per plant hole.

SOIL AMENDMENTS POST-PLANTING:

KELP CONCENTRATE
Kelp Plus Concentrate
Applied to manufacturers' specification

LIQUID HUMATES
Humates Liquid Carbon
Applied to manufacturers' specification

WETTING AGENT
Supa Soak Wetting Agent
Applied to manufacturers' specification

MULCH
Eclipse Soils Fogo Mulch

TREE PLANTING PLAN

SCALE 1 : 200

TREE SCHEDULE		
KEY	DESCRIPTION	QUANT
Trees (35L)		
bal	Banksia littoralis	2
com	Corymbia maculata "Spotted Gum"	3
eur	Eucalyptus rudis	1
jam	Jacaranda mimosifolia	2
mec	Melaleuca cuticularis	3
mel	Melaleuca lanceolata	2
men	Melaleuca nesophila	2
pla	Platanus x acerifolia	1
	Subtotal	15
Feature Plants (5L)		
aga	Agave attenuata variegata	1
bpd	Banksia prionotes dwarf	1
mes	Melaleuca seriata	1
	Subtotal	3
	Total	18

CAUTION
OPTIC FIBRE
CABLES IN AREA

WARNING
HIGH VOLTAGE WESTERN POWER UGP IN AREA.
DEPTH OF COVER, IF KNOWN IS INDICATIVE ONLY
EXPOSURE BY HAND IS MANDATORY PH : 1300 769 345



SCALE

1 : 200 @ A1

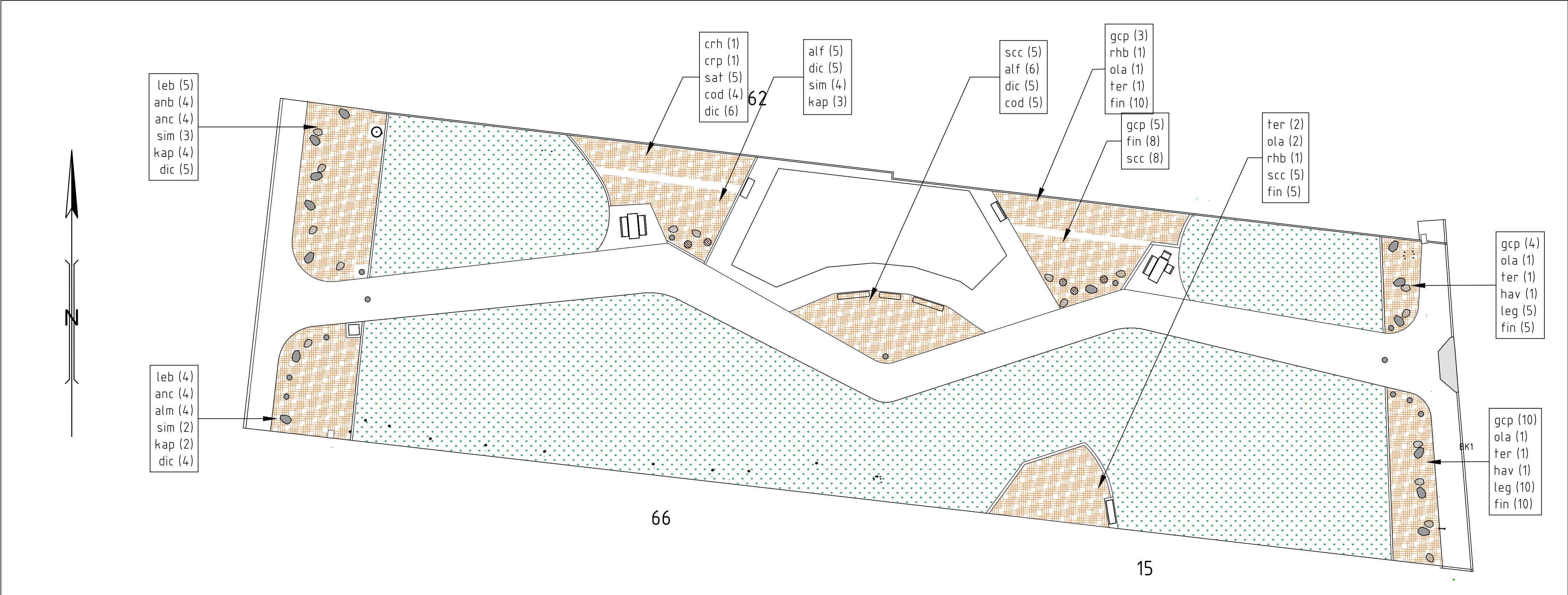
METRES

SURVEYED	MNG	AUG 2023
DESIGNED	B DAVIS	OCTOBER 2023
DRAWN	N NICHOLLS	NOV 2024
CHECKED	J AHOLA	NOV 2024

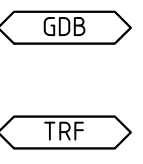
PROJECT NUMBER	----
APPROVED	J AHOLA --/--/----

ESPLANADE PARK
PUBLIC OPEN SPACE
TREE PLANTING PLAN

CAD FILE Esplanade Park.dwg	
DRAWING STATUS FOR TENDER	SHEET 7 of 8
PLAN No. 8142A1-24PG	AMENDMENT 0



LEGEND:



GARDEN BED - REFER SOFT LANDSCAPE PLAN, DETAILS AND SPECIFICATION
TURF - REFER SOFT LANDSCAPE PLAN, DETAILS AND SPECIFICATION

SOFT LANDSCAPING

TURF 1158m²
KIYKUYU? tbd, AS SPECIFIED
MULCH 309m²
WOODCHIP MULCH, AS SPECIFIED.
50mm THICKNESS

FOR TREE LOCATIONS REFER TO PLAN No 8142A1-24PG

PLANTING PLAN

SCALE 1 : 100

- NOTES**
- TRAFFIC MANAGEMENT**
Ensure traffic management during construction conforms to current acts, regulations and Australian Standards relating to worksite traffic management. Keep site safe and accessible for workers, pedestrians, and road users at all times.
 - SET OUT AND DIMENSIONS.**
 - Written dimensions shall take precedence over scaled.
 - Check all drawing scales in conjunction with original drawing size.
 - SERVICES AND EXISTING SITE FEATURES**
 - Locate all existing services and mark out prior to works.
 - Locate existing trees and site features to be retained.
 - Take all necessary measures to protect all services and existing site features.
 - Take all necessary measures to protect existing trees within and adjacent to the work area prior to commencement of works.
 - All work within driplines of existing trees to be done by hand.
 - Inform the City's Representative and gain prior approval for cutting roots 50mm diameter or greater.
 - Any damage shall be rectified at contractor's cost.
 - Services are shown in their approximate location. Domestic services are not shown. Locate all services by hand digging before excavation. Provide adequate support and protection fort exposed services.
 - REFERENCE**
 - Refer to CoM standard specifications and drawings prior to and during the works.
 - DISCREPANCIES**
Notify the City of any suspected or known discrepancies or errors prior to the ordering of affected materials and/or construction of affected works.
 - RELEVANT STANDARDS**
Undertake all pricing and works in accordance with current industry best practice and relevant Australian Standards.
 - INSTALLATION**
Install trees and plants as per CoM Planting Standards and Notes on Details Page.

TOPSOIL FOR BEDS:
ECLIPSE SOILS FOGO BLENDED TOPSOIL
Applied to manufacturer's specification

SOIL AMENDMENTS PRE-PLANTING:
ECLIPSE SOILS FOGO SOIL CONDITIONER
Applied to manufacturer's specification

SOIL AMENDMENTS FOR PLANTING:
BENEFICIAL PLANT MICROBES
GrowSafe Spreadable Soil Microbes
Water in 10-30g per plant hole.

SOIL AMENDMENTS POST-PLANTING:

KELP CONCENTRATE
Kelp Plus Concentrate
Applied to manufacturers' specification

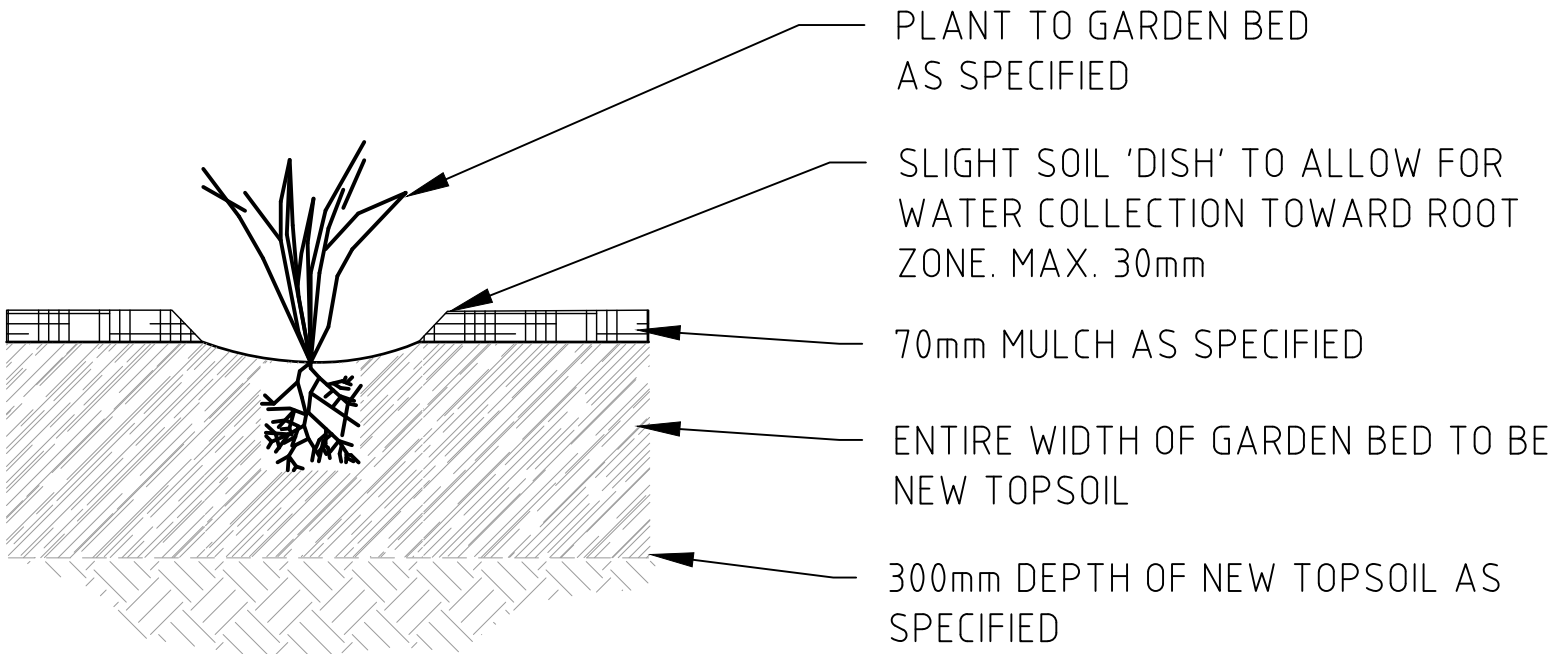
LIQUID HUMATES
Humates Liquid Carbon
Applied to manufacturers' specification

WETTING AGENT
Supa Soak Wetting Agent
Applied to manufacturers' specification

MULCH
Eclipse Soils Fogo Mulch

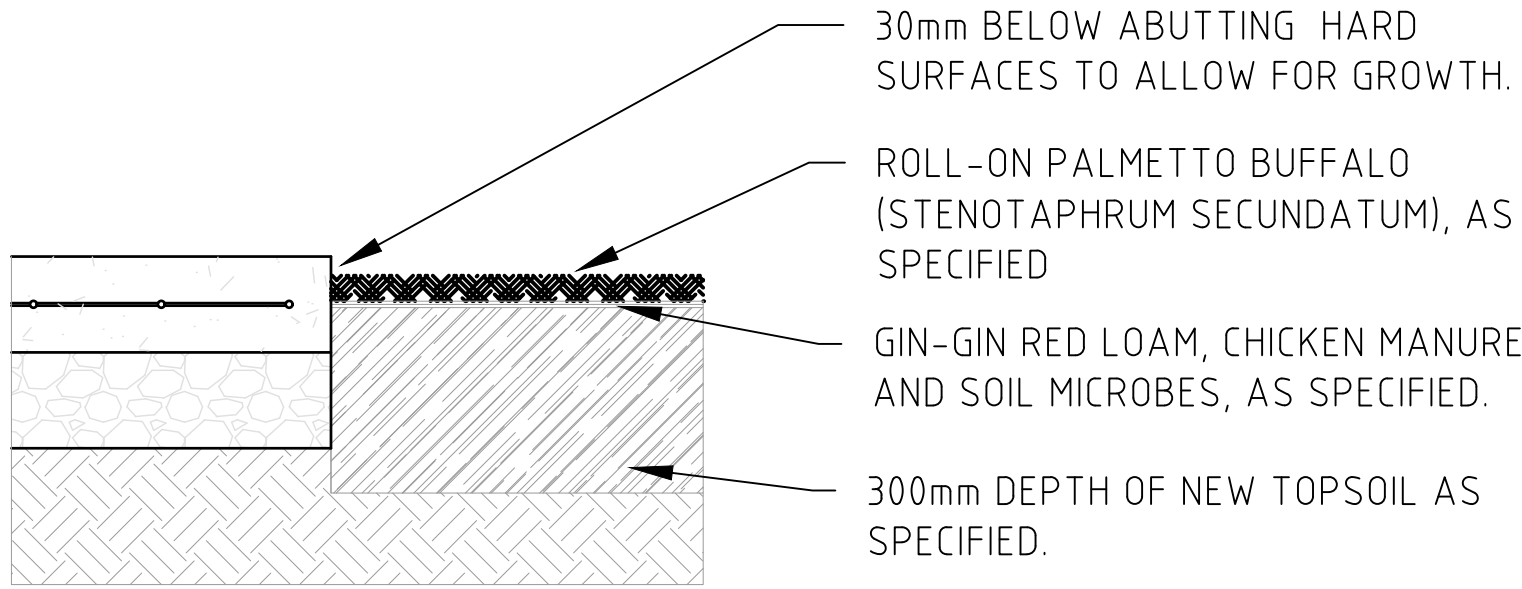
CAUTION
OPTIC FIBRE
CABLES IN AREA

WARNING
HIGH VOLTAGE WESTERN POWER UGP IN AREA.
DEPTH OF COVER, IF KNOWN IS INDICATIVE ONLY
EXPOSURE BY HAND IS MANDATORY PH : 1300 769 345



TYPICAL PLANTING DETAIL

NOT TO SCALE



TYPICAL TURF DETAIL

NOT TO SCALE



SCALE
1 : 200 @ A1
METRES

SURVEYED
MNG AUG 2023
DESIGNED
B DAVIS OCTOBER 2023
DRAWN
N NICHOLLS NOV 2024
CHECKED
J AHOLA NOV 2024

PROJECT NUMBER

APPROVED
J AHOLA
--/--/----

CAD FILE Esplanade Park.dwg	
DRAWING STATUS FOR TENDER	SHEET 8 of 8
PLAN No. 8143A1-24PG	AMENDMENT 0

PLANT SCHEDULE		
KEY	DESCRIPTION	QUANT
Plants (130mm)		
alf	Aloe "fairy pink"	11
alm	Aloe "Mighty Coral"	4
anb	Anigozanthos "Bush Glow"	4
anc	Anigozanthos "Carnivale"	8
cod	Correa "Dusky Bells"	9
crh	Crassula ovata "Hummel's Sunset"	1
crp	Crassula ovata "Pink Beauty"	1
dic	Dianella caerulea	25
fin	Ficinia nodosa	38
gcp	Gevillea chrithmifolia prostrate	22
hav	Hakea varia	2
kap	Kalanchoe pumila "Quicksilver"	9
leb	Leucophyta brownii	9
leg	Lepidosperma gladiatum	15
ola	Olearia axillaris	5
rhb	Rhagodia baccata	2
sat	Sanserviera Trifasciata	5
scc	Scaevolia crassifolia "Cushion Fan Flower"	18
sim	Sinecio Mandraliscae "blue chalk sticks"	9
ter	Templetonia retusa	5
Total		202