



SHIRLEY STRICKLAND REDEVELOPMENT PROJECT

- Donovan Payne Architects is a consultancy specialising in the design of Aquatic, Sport, Recreation, Leisure & related Community facilities.
- The City of Melville has retained Donovan Payne to design and deliver new facilities for Shirley Strickland Reserve.
- In summary, these are as follows:
 1. A pavilion containing function rooms; kiosk/kitchens; meeting room; clubroom; lots of appropriate storage; and foyer-display space for memorabilia.
 2. Closely associated are the sports-club changerooms, plus toilets; first aid; umpires and more storage.
 3. Site landscaping, encompassing retention of all trees; additional soft landscaping; walking paths; exercise opportunities; rest-stops; seating; pathway distance markers; BBQ; children's playground; and the like.
 4. Fine-tuning of the sports fields on the oval part of the reserve. The rectangular pitches are unchanged



EXISTING SPORTS OVAL



EXISTING SPORTS CLUB

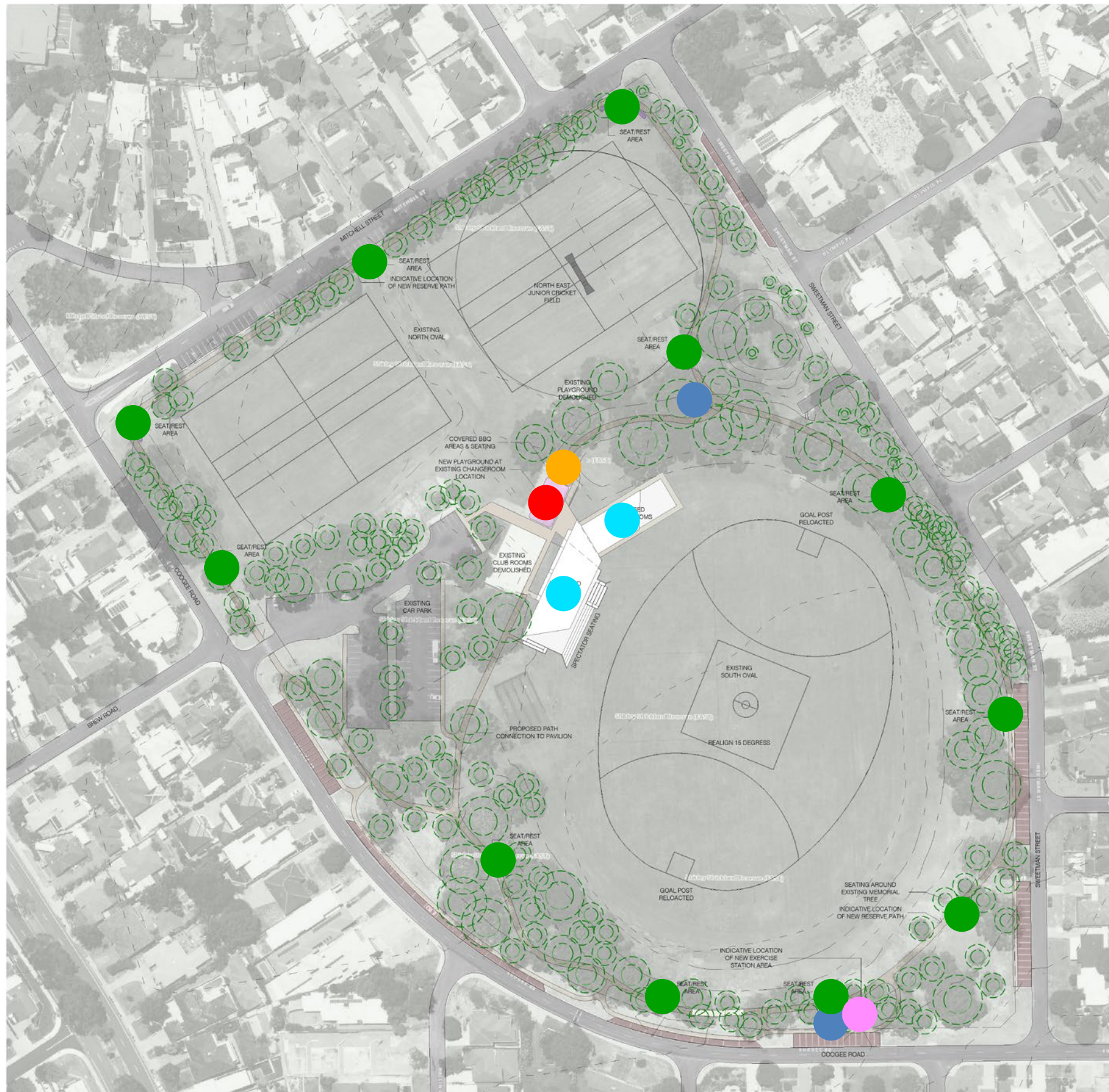
- The overall approach is to retain all important and much-loved features of the reserve; while adding new elements and facilities to improve all aspects of the use of the reserve.
- The new walking path will take the same route, in most cases, as the existing path known as the goat trail.
- The paths and landscaping will reinforce the protective perimeter banks and berms of the oval section of the reserve.



RETAIN EXISTING GOAT TRAIL



RETAIN EXISTING + NEW ACTIVITIES



LEGEND

- DRINK FOUNTAIN
- BBQ
- SEAT REST SPOTS
- OUTDOOR FITNESS AREA
- PLAYGROUND
- COMMUNITY PAVILION + CHANGE ROOMS





CONCEPT PLAN
SCALE 1:1000 @ A1

PROPOSED PLANTING PALETTE



Agonis flexuosa 'Nana'



Anigozanthus flavidus



Anigozanthus Rufus



Anigozanthus pulcherimus



Banksia blechnifolia



Beaufortia squarrosa



Calothamus quadrifidus



Chorizema cordatum



Gastrolobium celsianum



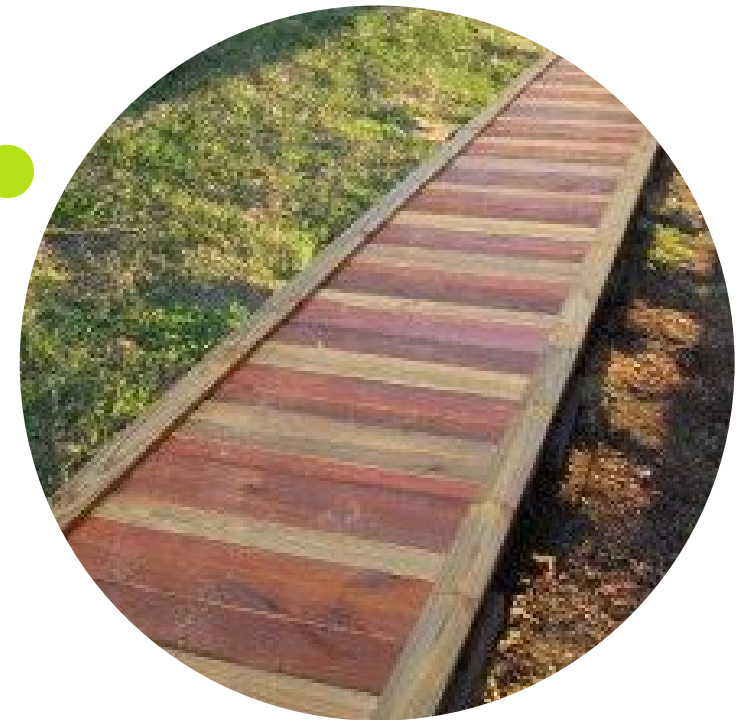
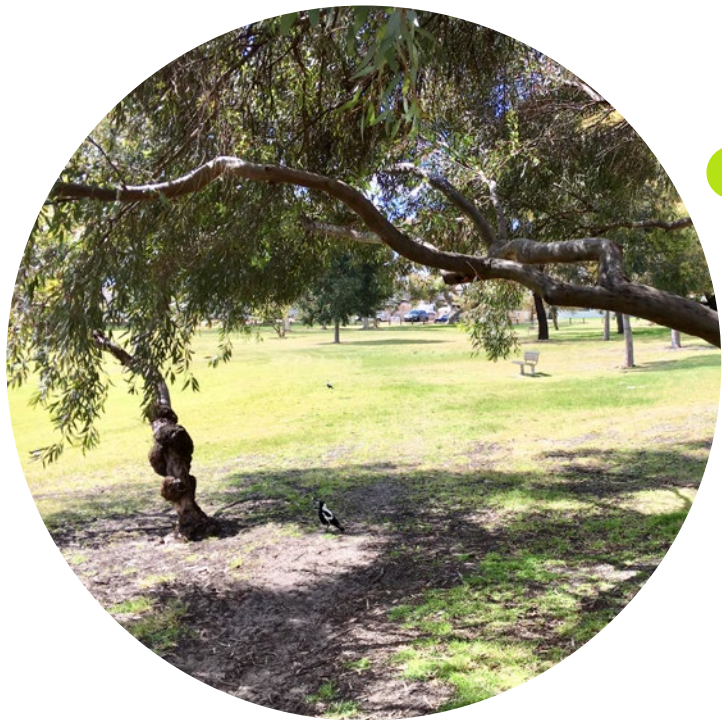
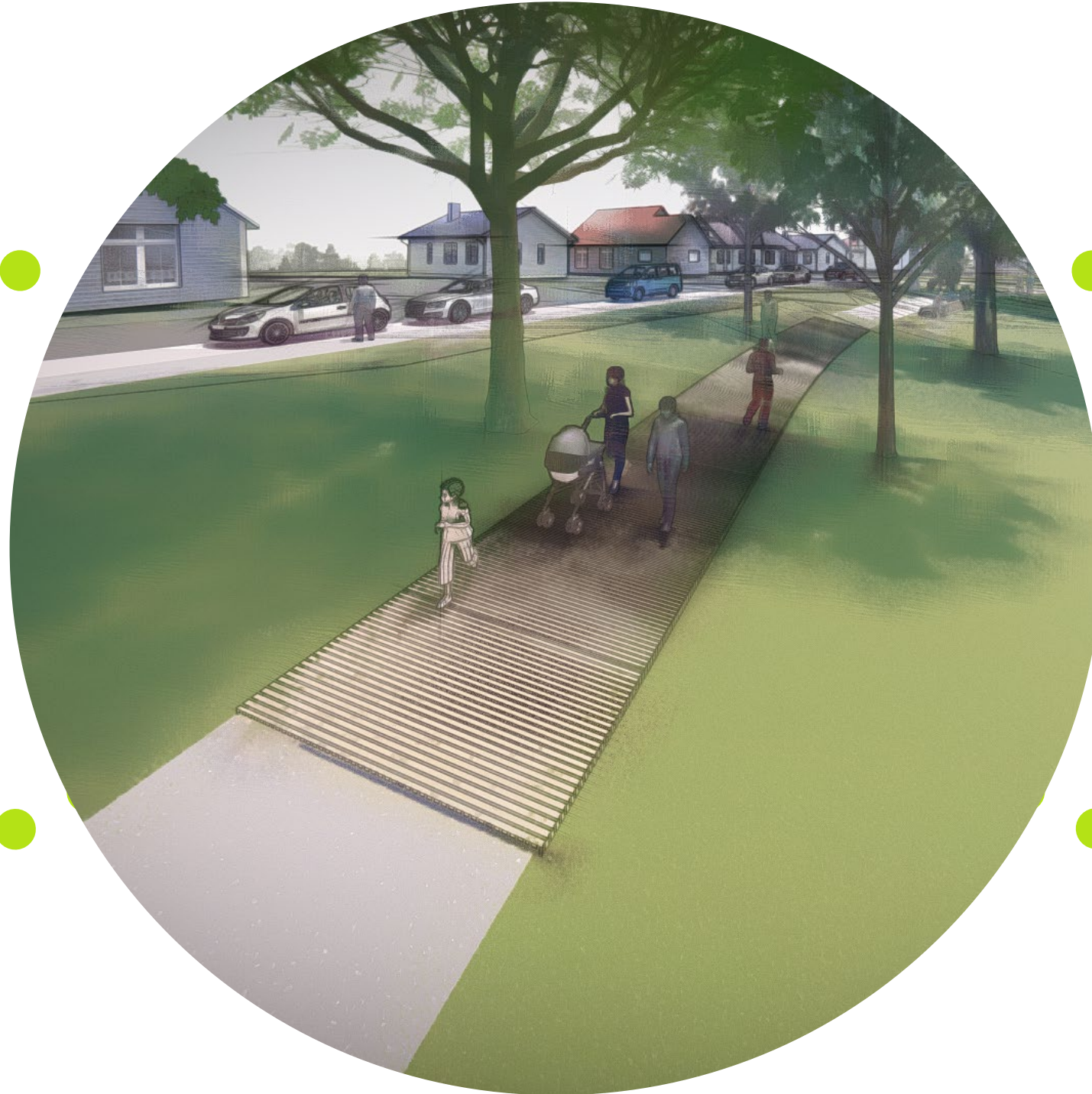
Hypocalymma robustum

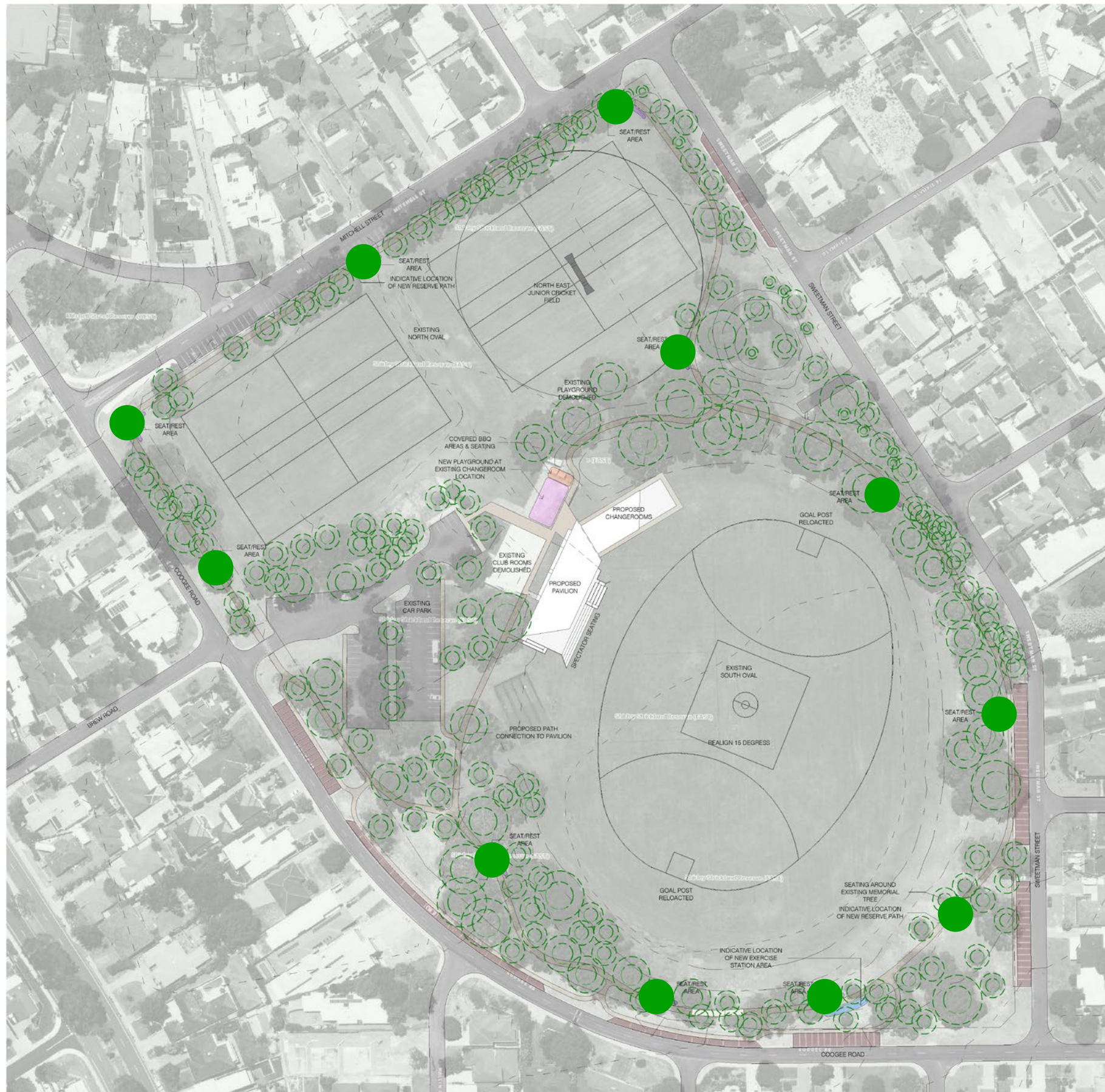


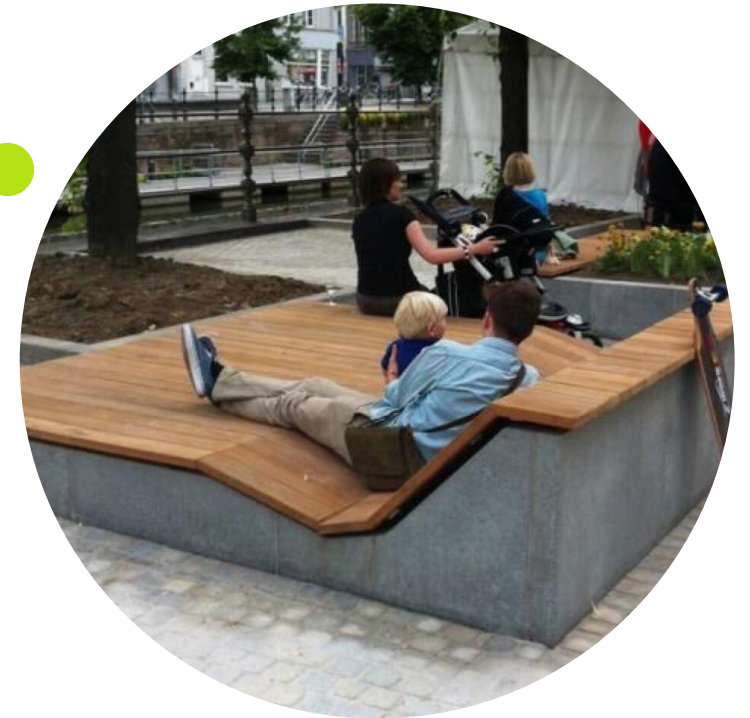
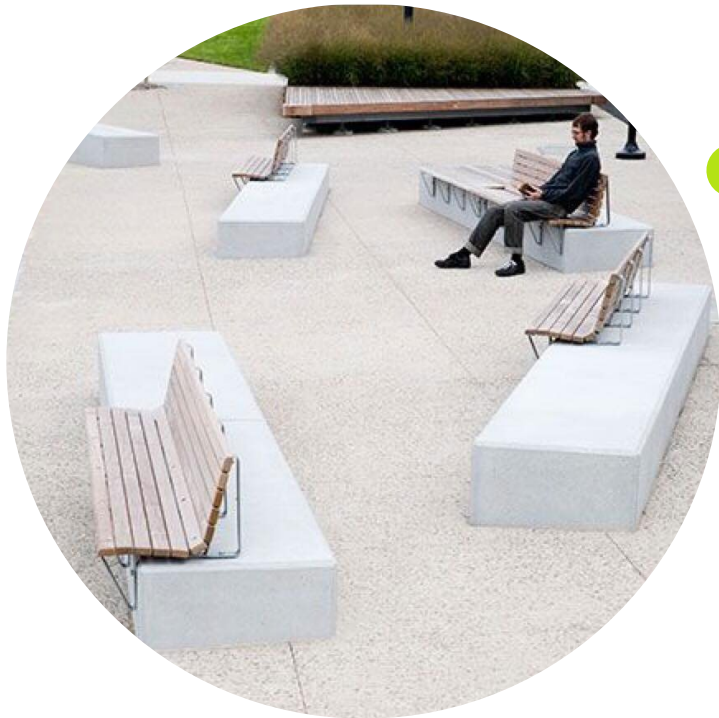
Westringia fruticosa

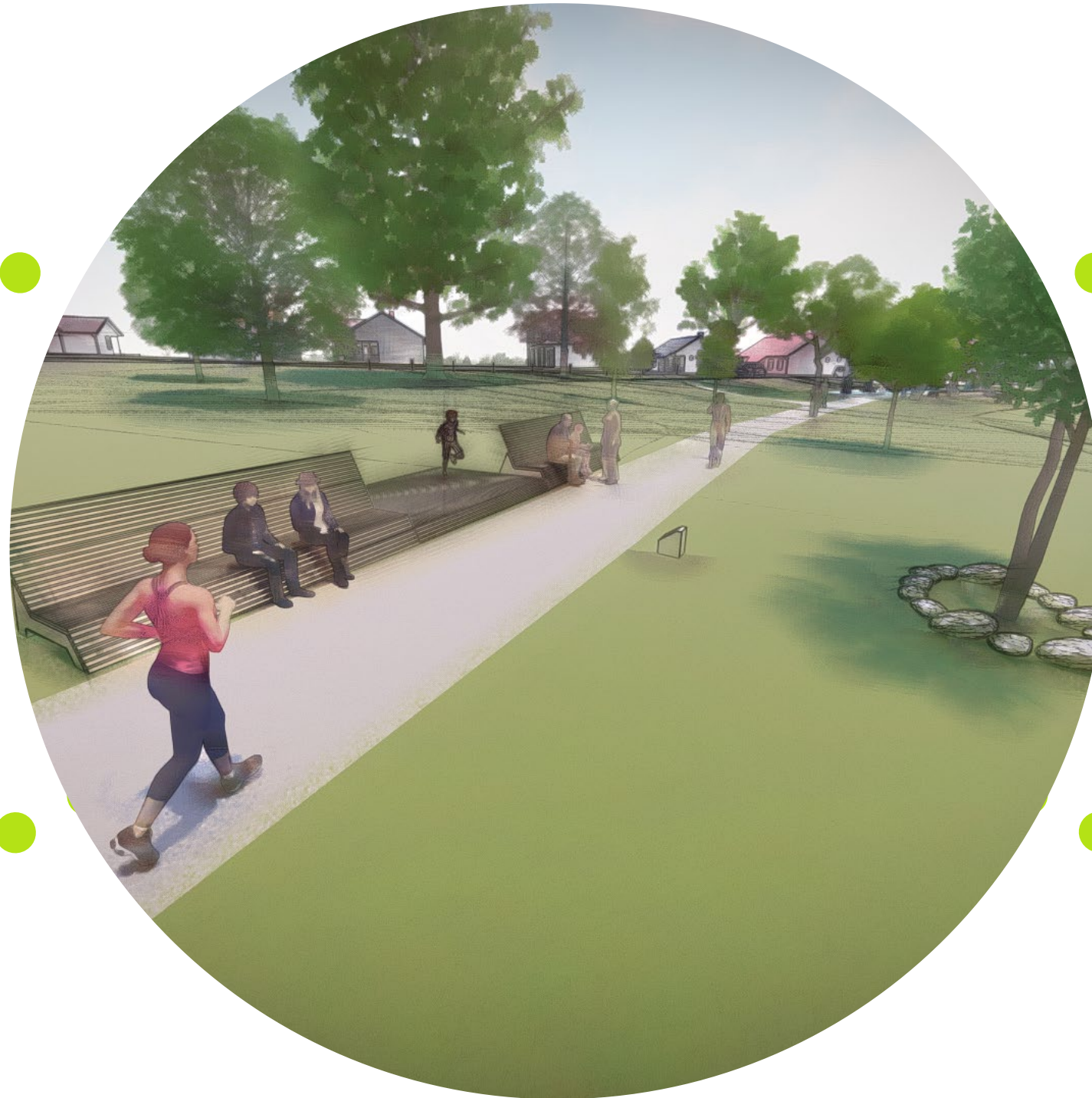
RAIN GARDEN TO CAR PARK

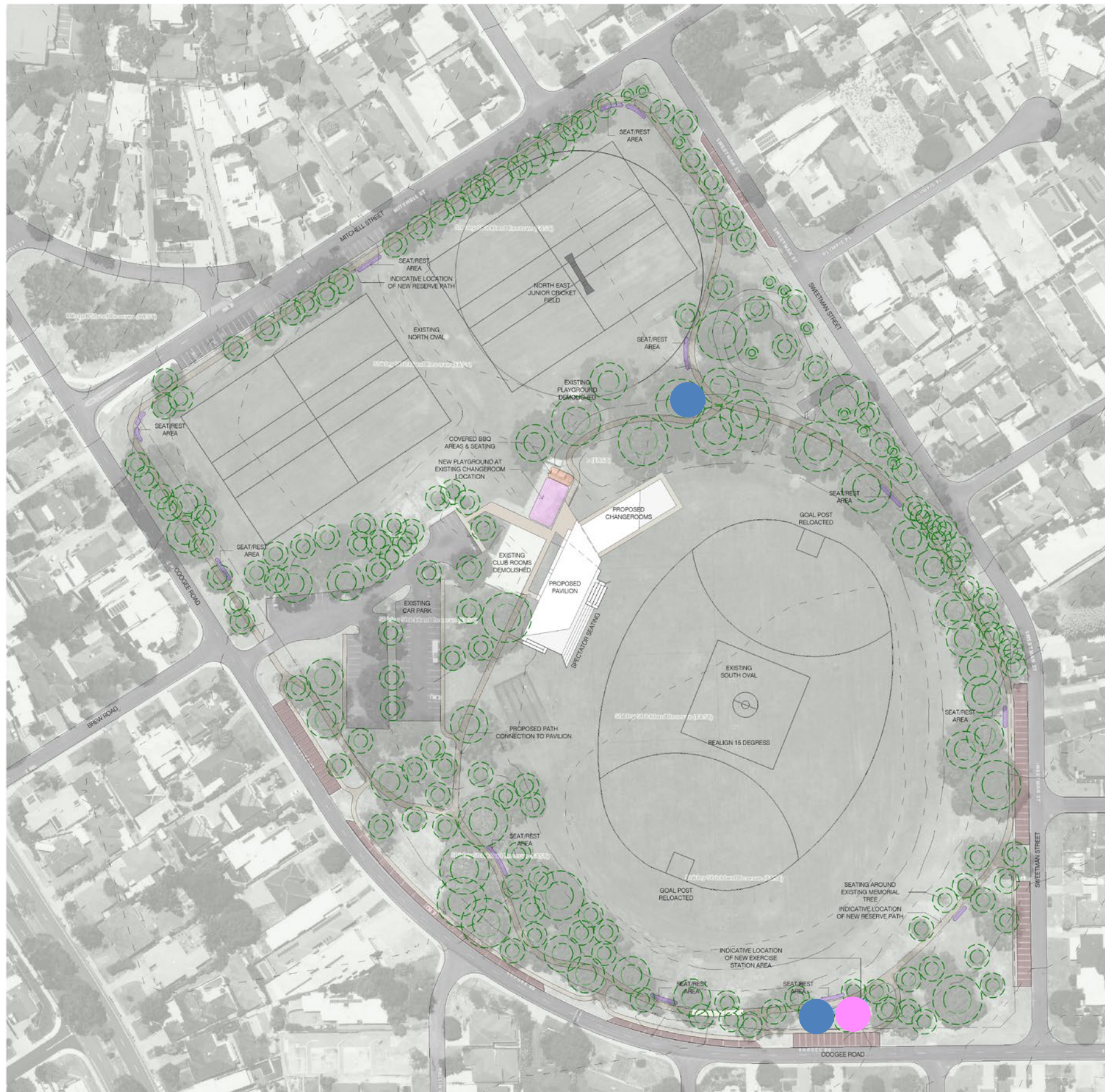


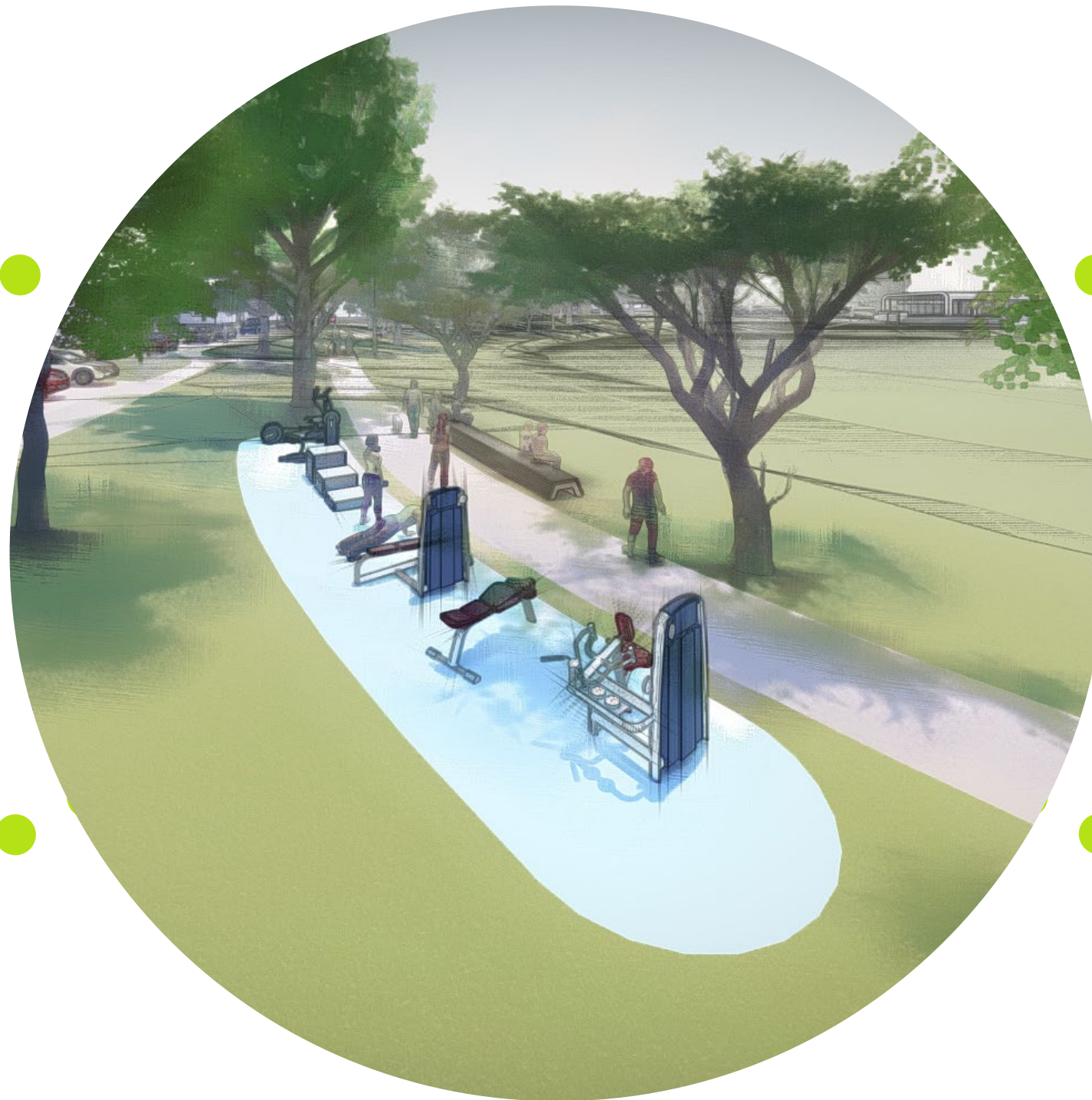


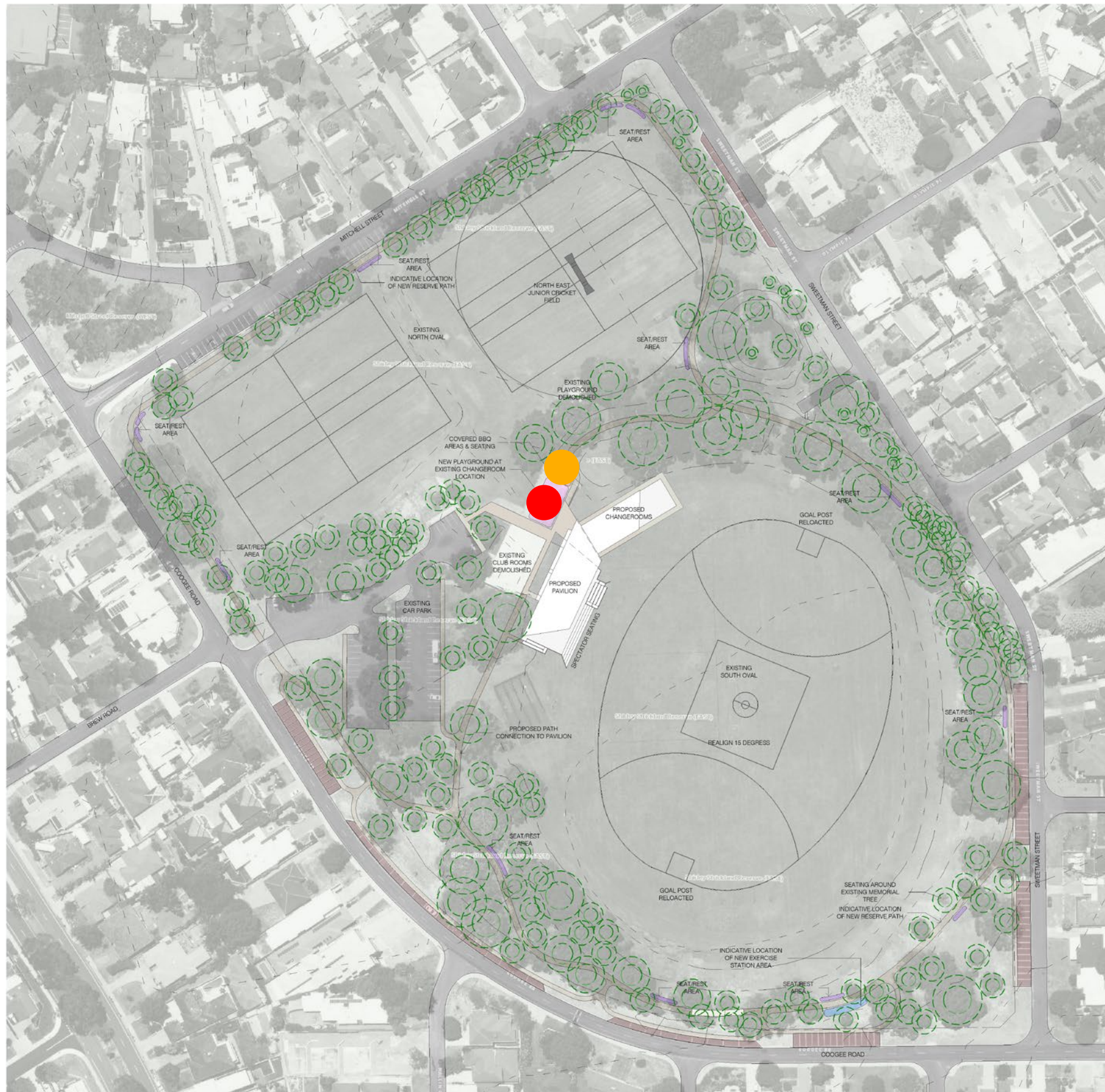








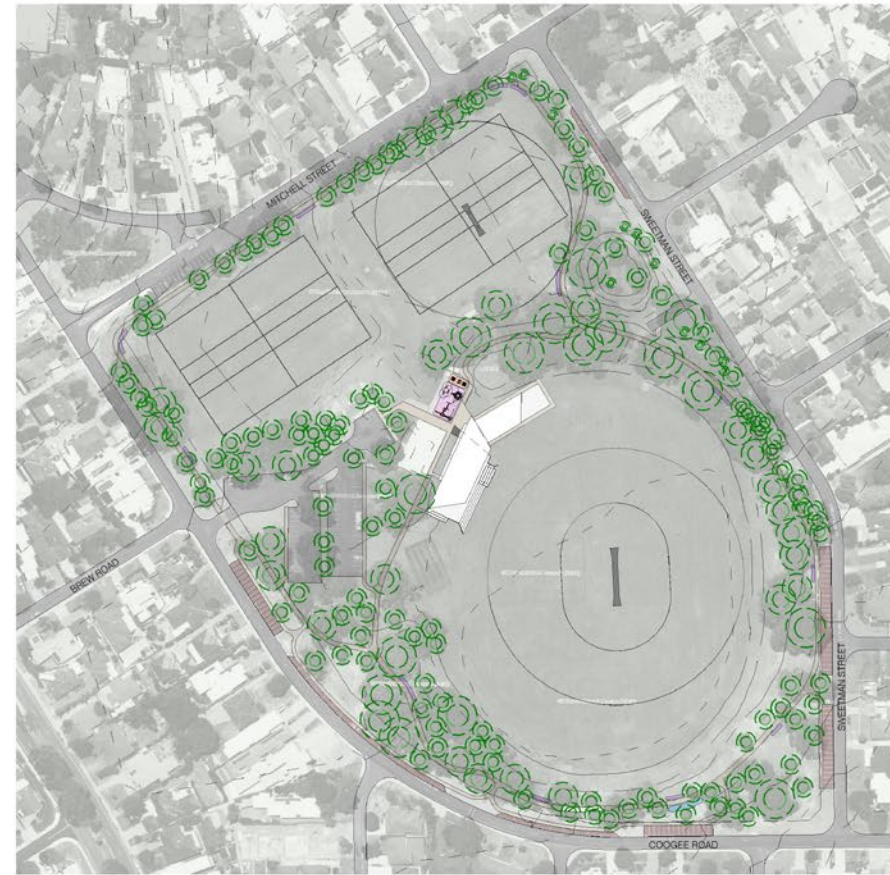








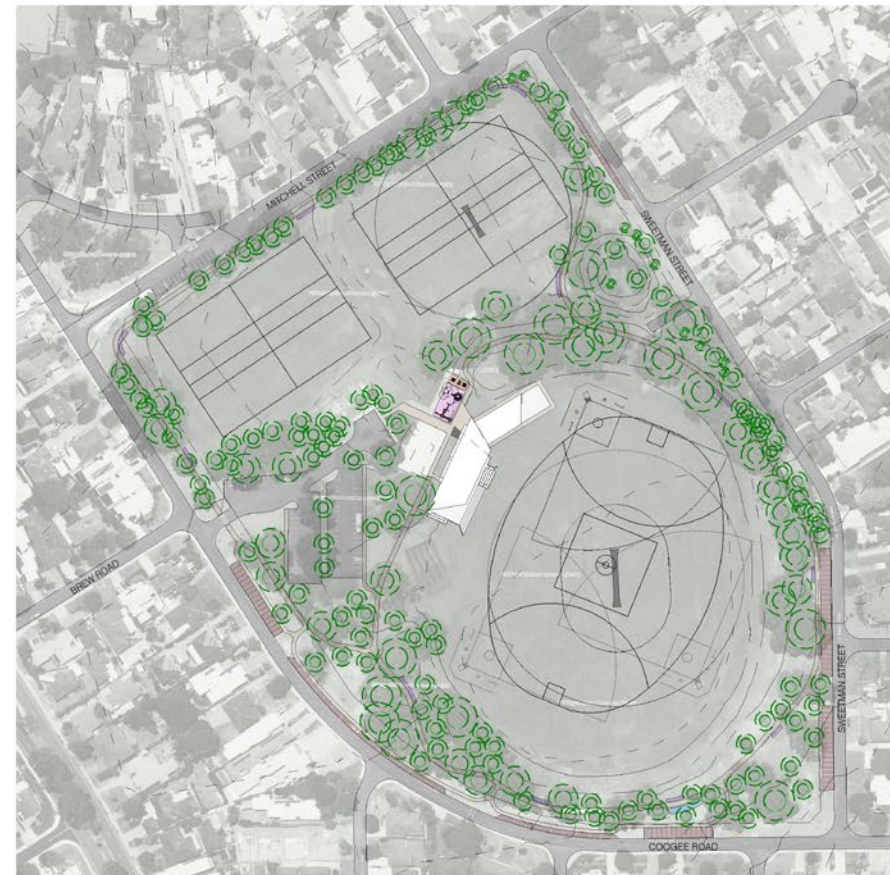
AFL



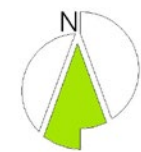
CRICKET



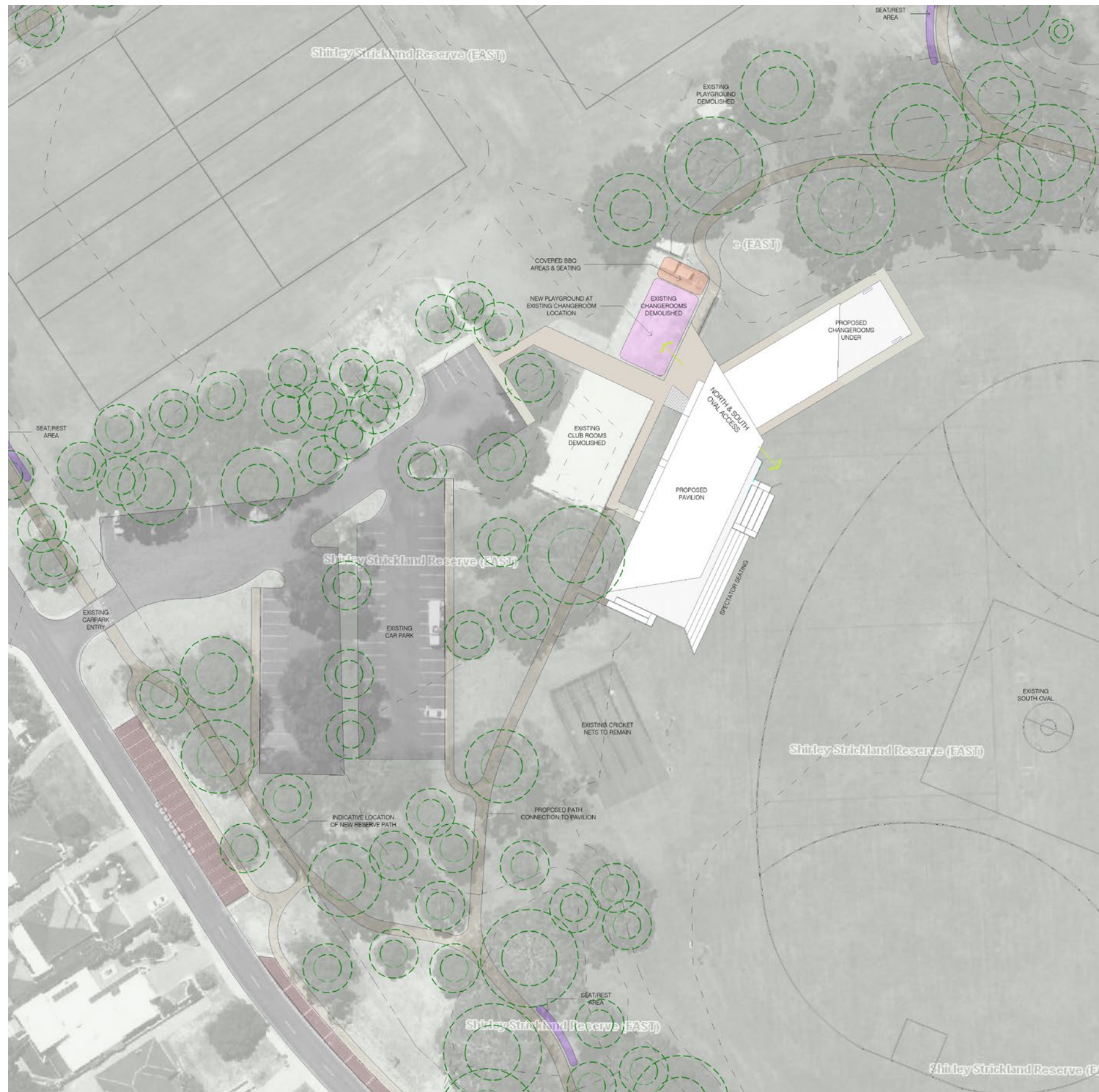
SOFTBALL



COMBINED

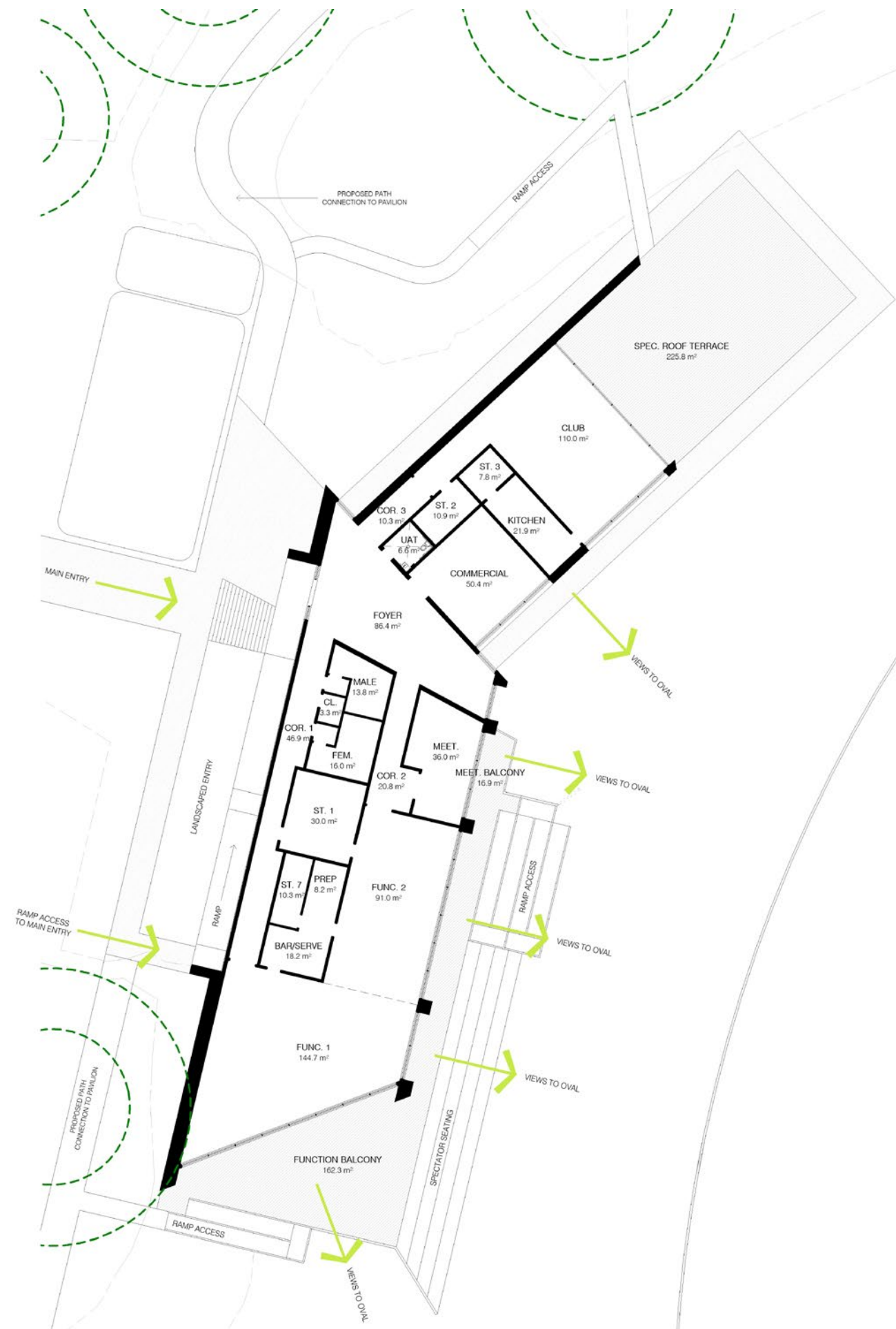






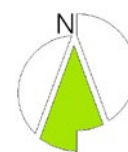
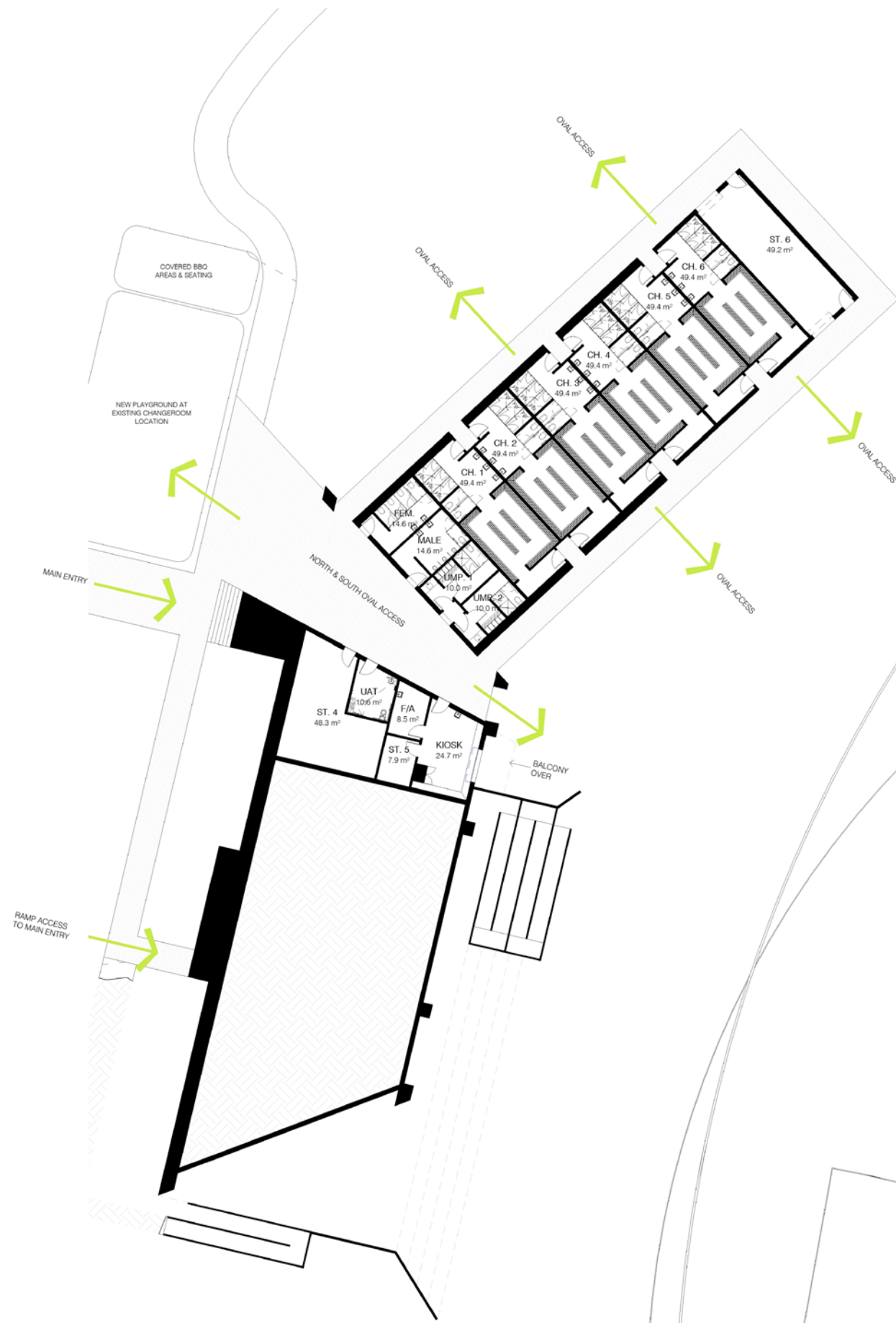


FIRST FLOOR PLAN - CHANGE ROOMS

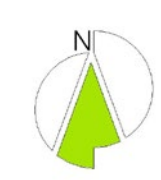
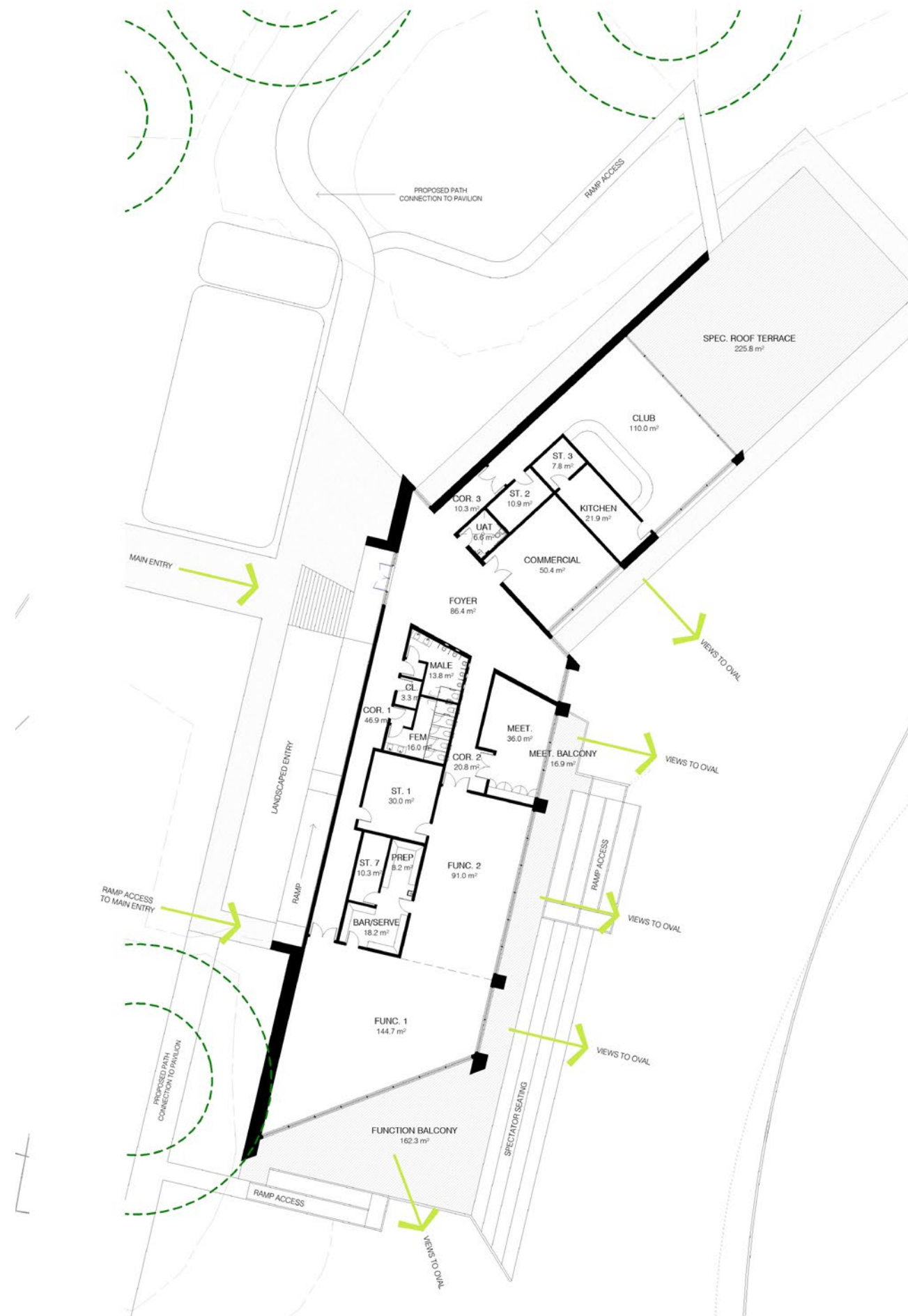


SECOND FLOOR PLAN - FUNCTION AND CLUB ROOMS





FIRST FLOOR DETAILED PLAN



SECOND FLOOR DETAILED PLAN