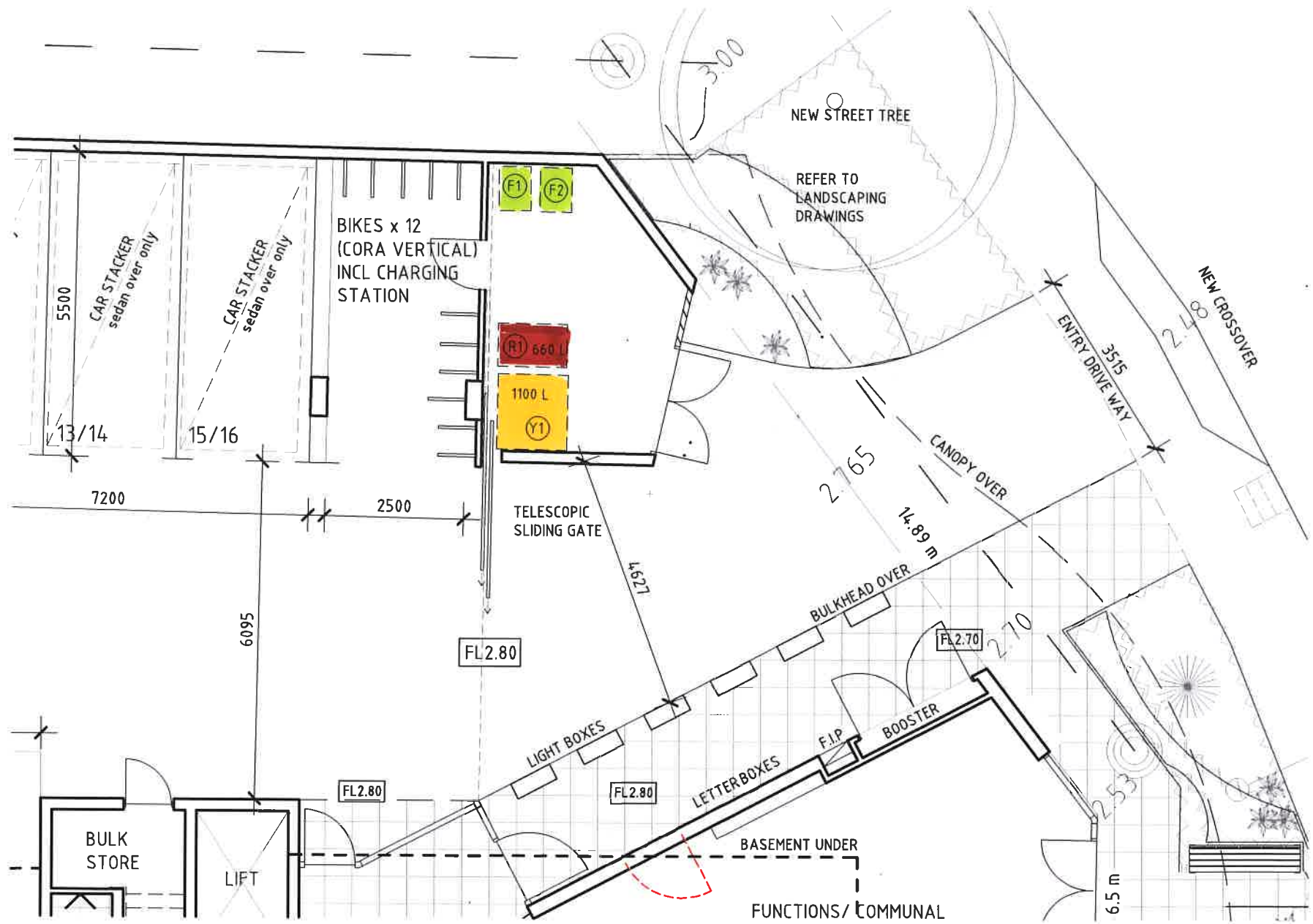


### 55 Kishorn Road Waste Management Plan

Please refer to Bin enclosure Plan attached.

Fogo Bins are moved to the footpath on collection day and returned to Bin enclosure after collection by the Building Manager.

General Rubbish and Recycled Rubbish are rolled out by the Rubbish Truck driver and returned to the Bins Store after collection by the Rubbish Truck driver



## Bin Requirements Summary

1 Beds x 3 Apts  
 2 Beds x 16 Apts  
 1 Beds x 3 Apts

Residential Waste, Recycling and FOGO Calculations			
	<i>Waste Requirement</i>	<i>Recycling Requirement</i>	<i>FOGO Requirement</i>
3 bedrooms or Greater (1 of)	70L/week <b>70</b>	120L/week <b>120</b>	30L/week <b>30</b>
2 bedrooms (16 of)	60L/week <b>960</b>	80L/week <b>1280</b>	20L/week <b>320</b>
1 bedroom (3 of)	40L/week <b>120</b>	60L/week <b>180</b>	10L/week <b>30</b>
Total Litres	<b>1150</b>	<b>1580</b>	<b>380</b>
Bins Req. (per week)	<b>5 @ 240L</b>	<b>5@360</b>	<b>2@ 240L</b>

**Proposed                      1 x 1100 Ltre                      2 x 660 L+240L                      2 x 240 L**

**Size:**

240L for waste/recycling/FOGO  
 360L recycling (option)  
 660L waste/recycling (option)  
 1,100L recycling (option)