
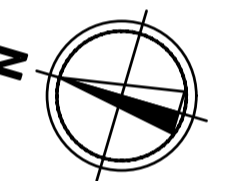


- NOTES:**
1. VERTICAL DATUM: AHD (SSM ROSSMOYNE 327 RL 27.469 AHD)
 2. HORIZONTAL DATUM: BASED ON CADASTRAL BOUNDARY (REFER DP408990).
PROJECT GRID: PCG94
 3. SEWER INFORMATION HAS BEEN SUPPLIED FROM WATER CORPORATION PLANS.
 4. ONLY VISIBLE FEATURES HAVE BEEN LOCATED BY FIELD SURVEY.
PRIOR TO ANY CONSTRUCTION, EXCAVATION OR DEMOLITION THE RELEVANT SERVICE AUTHORITIES SHOULD BE CONTACTED TO CONFIRM LOCATION OF ALL UNDERGROUND AND NON VISIBLE SERVICES.
 5. ONLY TREES WITH TRUNK SIZE GREATER THAN 0.3mØ HAVE BEEN LOCATED BY FIELD SURVEY.
 6. REFER TO CERTIFICATE OF TITLE FOR ENCUMBRANCES.

SCALE 1 : 300 @ A1
0 5 10 15 20

 WESTWIND SURVEYING 119 ALICE STREET DOUBLEDAY 1200 KNOXES STREET MELBAU 0412 884 623	CLIENT:	DESCRIPTION:	Produced for the exclusive use and benefit of our client only.	AMENDMENTS				
	NAME OR COMPANY	FEATURE SURVEY LOT 1001 ON DP408990 CORNER MURDOCH DRIVE AND FARRINGTON ROAD MURDOCH CERTIFICATE OF TITLE VOL 2926 FOL 535	DWG N°: 1324	SHEET N°: 1	ISS N° 1	DATE 6.6.2019	DRN TSK	DESCRIPTION DATE OF SURVEY: 4.6.2019
			CAD: 1324 SHT1 ISS1.DWG	A1				



HINDLEY & ASSOCIATES
PTY LTD
BUILDING DESIGNERS

166 STIRLING HIGHWAY
NEDLANDS WA 6009

PO BOX 199
NEDLANDS WA 6909

PHONE - 9386 6699
FAX - 9386 6700
admin@hindley.com.au

DEVELOPMENT APPLICATION

LOCATION OF
MURDOCH DRIVE
CONNECTION

PROPOSED MIXED USE DEVELOPMENT
LOT 1001 AND 3001, CNR MURDOCH DRIVE AND
FARRINGTON ROAD
SITE SUBJECT TO THIS APPLICATION

THIS DRAWING IS COPYRIGHT AND MUST NOT BE
RETAINED, COPIED OR USED WITHOUT THE
AUTHORITY OF HINDLEY & ASSOCIATES PTY LTD.
DO NOT SCALE FROM THIS DRAWING.
THE CONTRACTOR AND HIS SUBCONTRACTORS ARE
TO VERIFY ALL DIMENSIONS ON SITE BEFORE MAKING
SHOP DRAWINGS OR COMMENCING MANUFACTURE.
THIS IS A COMPUTER GENERATED DRAWING AND
SHALL NOT BE ALTERED BY HAND.

HINDLEY & ASSOCIATES P/L
AS TRUSTEE FOR
HINDLEY TRUST
ACN No. 088 989 904



NO.	DATE	REVISION	DRAWN	CHECK
A	20.07.19	DEVELOPMENT APPLICATION ISSUE	RCP	SDS
B	01.08.19	DEVELOPMENT APPLICATION ISSUE	RCP	SDS

A1 SHEET

SITE LOCATION PLAN
NOT TO SCALE

PROPOSED COMMERCIAL DEVELOPMENT
LOT 1001 & 3001, CNR MURDOCH DRIVE
AND FARRINGTON ROAD, MURDOCH
FABRIC PROPERTY

Date	20.07.19
Design	RCP
Drawn	RCP
Checked	SDS
Scale	N.T.S.
Job No.	0702
Dwg	DA01
Rev	B



LEGEND

- NEW LEASABLE BUILDING AREA.
- NEW COMMON / SERVICES BUILDING AREA.
- NEW HARDSTAND PAVING.
- NEW BLACK CONCRETE PAVING.
- NEW HEAVY DUTY CONCRETE FOR TRUCK TURNING - SELECTED FINISH.
- NEW CONCRETE FOOTPATH TO MATCH EXISTING.
- NEW PAVING.
- NEW SELECTED NATIVE WATERWISE LANDSCAPING.
- EXTENT OF NEW BOUNDARY RETAINING WALL - REFER TO CIVIL ENGINEER'S DRAWINGS.
- SELECTED SHADE TREE.

GENERAL NOTES

SITE AREA: 14,925m²
 LANDSCAPING AREA: 1,471.2m²
 = 9.8% OF SITE AREA

CARPARKING

MARKED BAYS: 201
 DRIVE THROUGH STACK: 35
 REFUELING BAYS: 8
 MOTORCYCLE BAYS: 10

NOTE
 REFER TO TRAFFIC IMPACT ASSESSMENT FOR EACH INDIVIDUAL USES PARKING REQUIREMENTS

IHA

HINDLEY & ASSOCIATES
 PTY LTD
 BUILDING DESIGNERS

166 STIRLING HIGHWAY
 NEDLANDS WA 6009

PO BOX 199
 NEDLANDS WA 6009

PHONE - 9386 6699
 FAX - 9386 6700
 admin@hindley.com.au

DEVELOPMENT APPLICATION

THIS DRAWING IS COPYRIGHT AND MUST NOT BE RETAINED, COPIED OR USED WITHOUT THE AUTHORITY OF HINDLEY & ASSOCIATES PTY LTD. DO NOT SCALE FROM THIS DRAWING.

THE CONTRACTOR AND HIS SUBCONTRACTORS ARE TO VERIFY ALL DIMENSIONS ON SITE BEFORE MAKING SHOP DRAWINGS OR COMMENCING MANUFACTURE.

THIS IS A COMPUTER GENERATED DRAWING AND SHALL NOT BE ALTERED BY HAND.

HINDLEY & ASSOCIATES PTY LTD
 AS TRUSTEE FOR
 HINDLEY TRUST
 ACN No. 088 989 904

NO: DATE: REVISION: DRAWN: CHECK:

A 30.07.19 DEVELOPMENT APPLICATION ISSUE RCP SDS
 B 01.08.19 DEVELOPMENT APPLICATION ISSUE RCP SDS

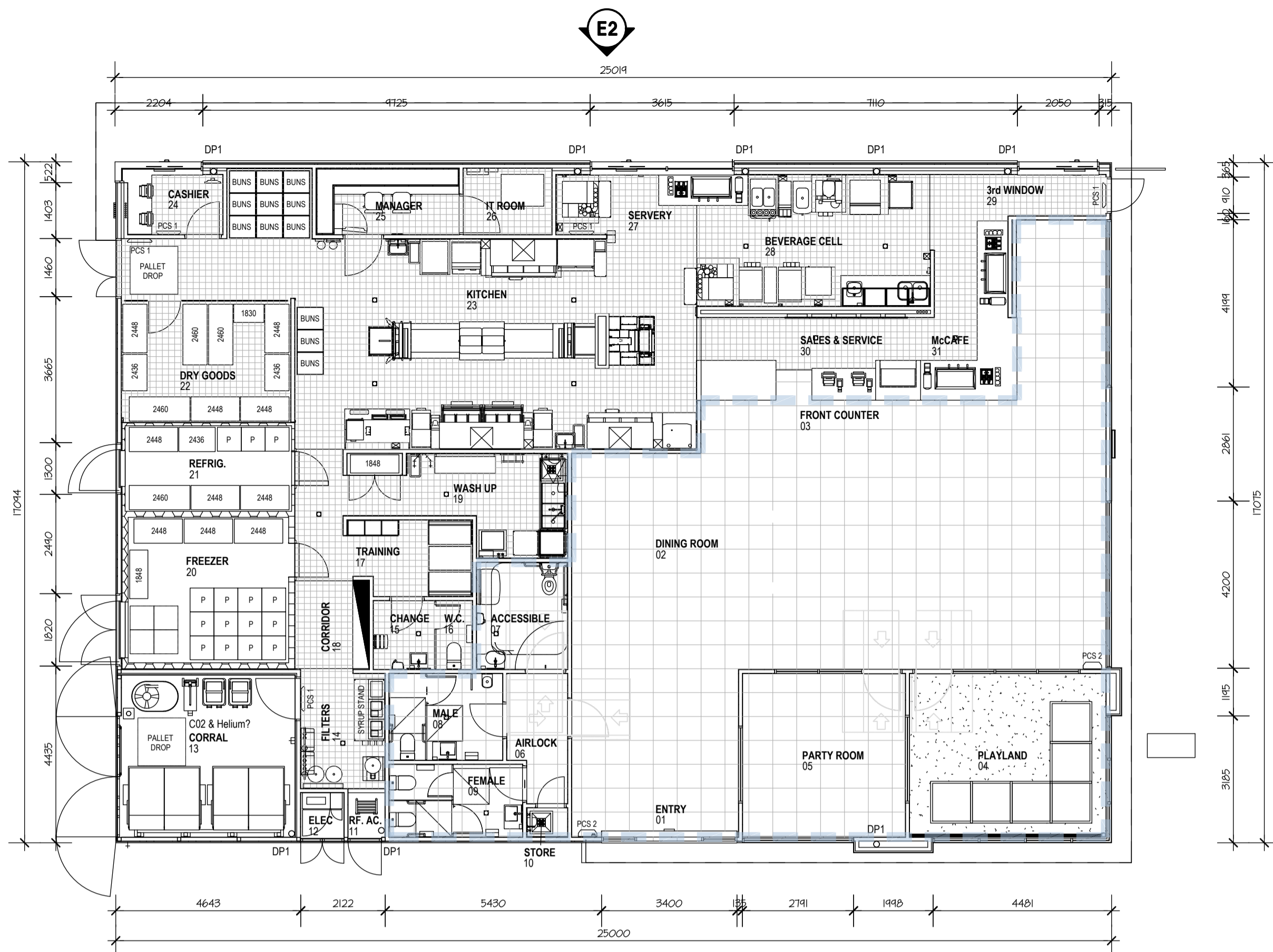
A1 SHEET

PROPOSED SITE PLAN

SCALE 1:300

PROPOSED COMMERCIAL DEVELOPMENT
LOT 1001 & 3001, CNR MURDOCH DRIVE
AND FARRINGTON ROAD, MURDOCH
FABRIC PROPERTY

Date - 22.01.19
 Design - RCP
 Drawn - RCP
 Checked - SDS
 Scale - 1:200
 Job No. 0879
 Dwg No. **DA02**
 Rev - **B**



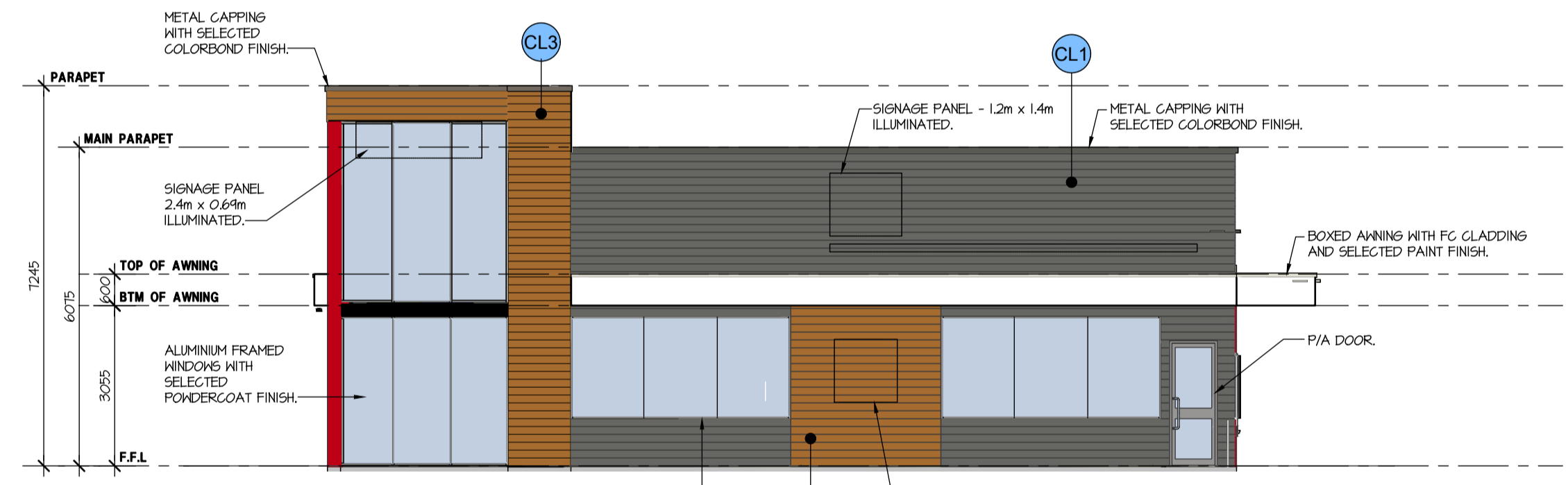
FLOOR PLAN
SCALE 1:100

FLOOR PLAN NOTE

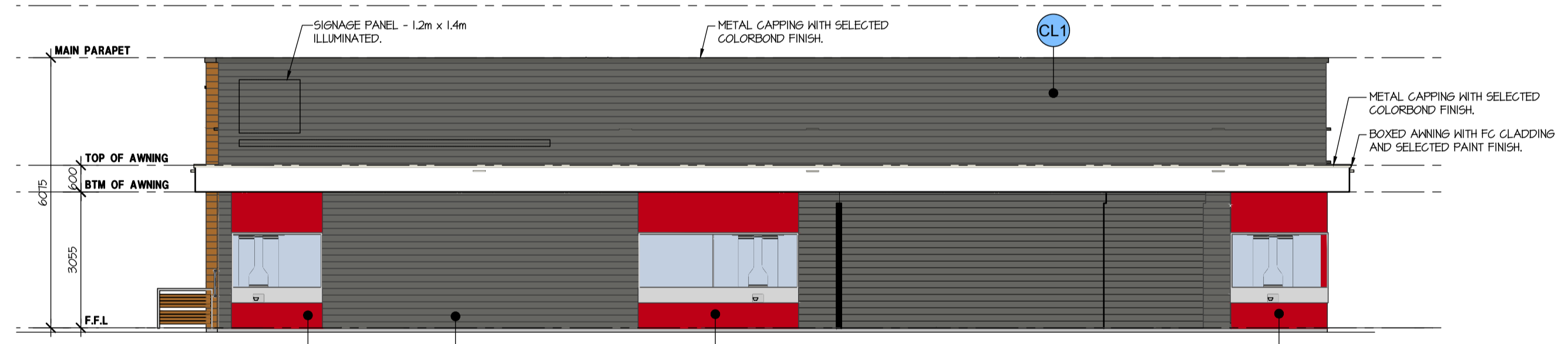
112m² - PUBLICLY ACCESSIBLE AREAS

COLOUR LEGEND

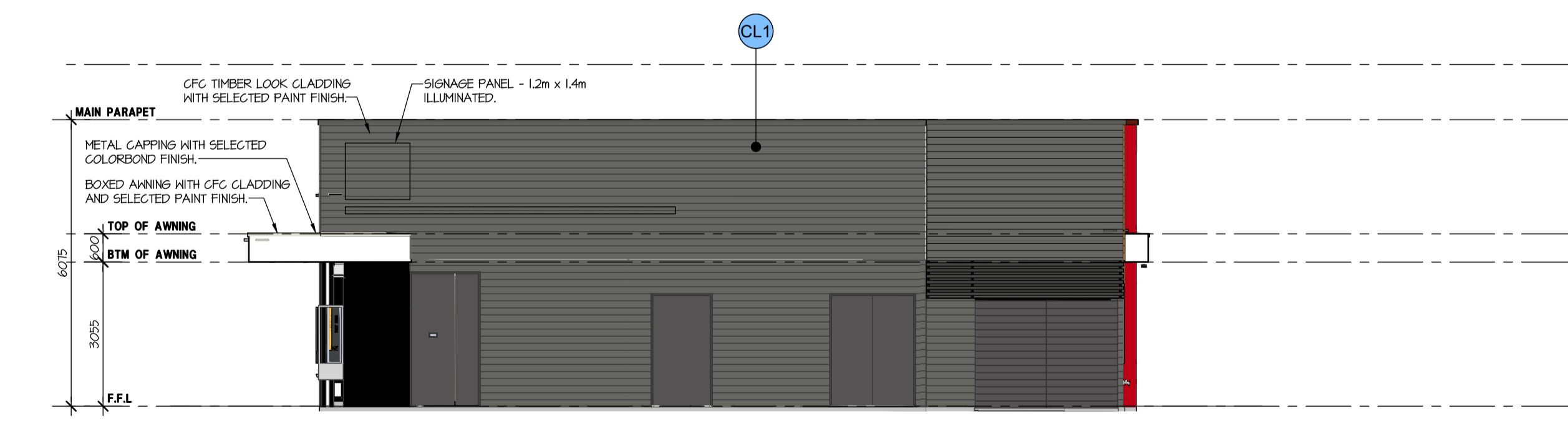
- CL1 HEATHERBOARD CLADDING WITH NATYHAD GREY PAINT FINISH.
- CL2 EXOTEC® OR SIMILAR CLADDING WITH PAINT FINISH - 'HOT LIPS' RED.
- CL3 HEATHERBOARD CLADDING IN SELECTED TIMBER LOOK FINISH.
- FC1 FC SHEET WITH 'VIVID WHITE' PAINT FINISH.



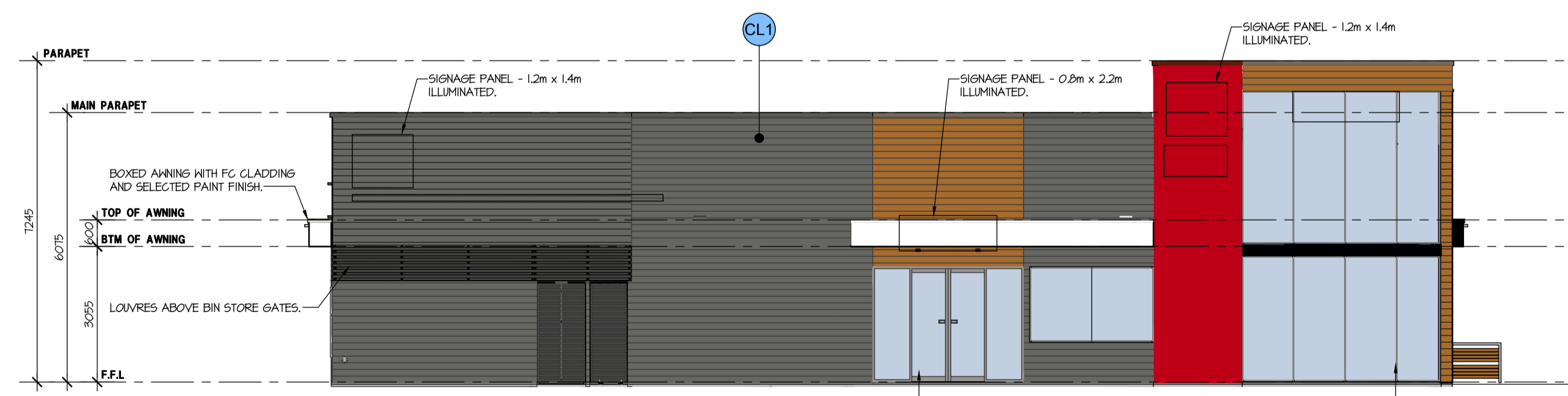
ELEVATION 1
SCALE 1:100



ELEVATION 2
SCALE 1:100



ELEVATION 3
SCALE 1:100



ELEVATION 4
SCALE 1:100

HIA

HINDLEY & ASSOCIATES
PTY LTD
BUILDING DESIGNERS

166 STIRLING HIGHWAY
NEDLANDS WA 6109

PO BOX 199
NEDLANDS WA 6109

PHONE - 9386 6699
FAX - 9386 6700
admin@hindley.com.au

DEVELOPMENT APPLICATION

THIS DRAWING IS COPYRIGHT AND MUST NOT BE RETAINED, COPIED OR USED WITHOUT THE AUTHORITY OF HINDLEY & ASSOCIATES PTY LTD. DO NOT SCALE FROM THIS DRAWING.

THE CONTRACTOR AND HIS SUBCONTRACTORS ARE TO VERIFY ALL DIMENSIONS ON SITE BEFORE MAKING SHOP DRAWINGS OR COMMENCING MANUFACTURE.

THIS IS A COMPUTER GENERATED DRAWING AND SHALL NOT BE ALTERED BY HAND.

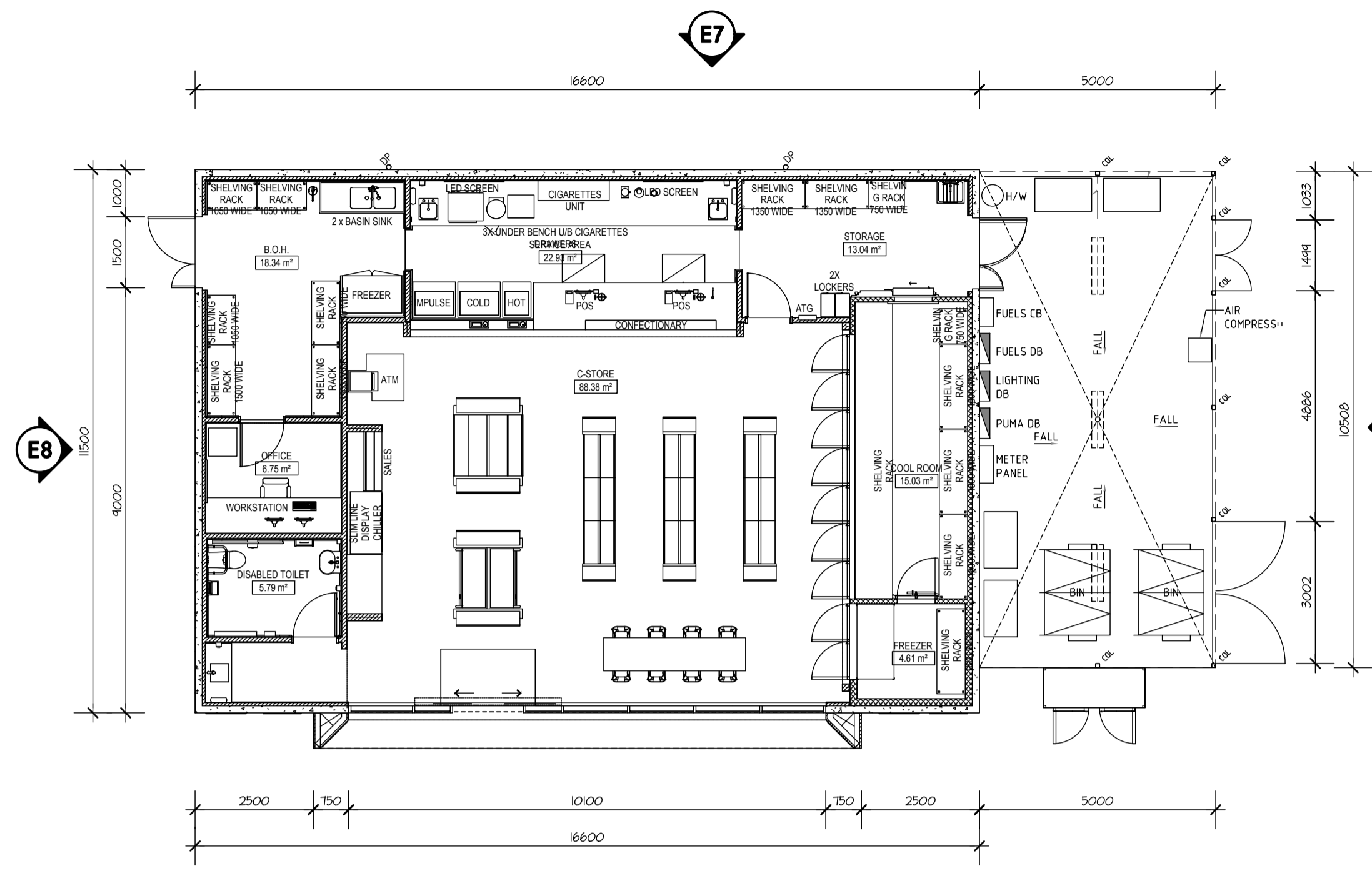
HINDLEY & ASSOCIATES P/L
AS TRUSTEE FOR
HINDLEY TRUST
ACN No. 088 989 904

NO: DATE: REVISION: DRAWN: CHECK:

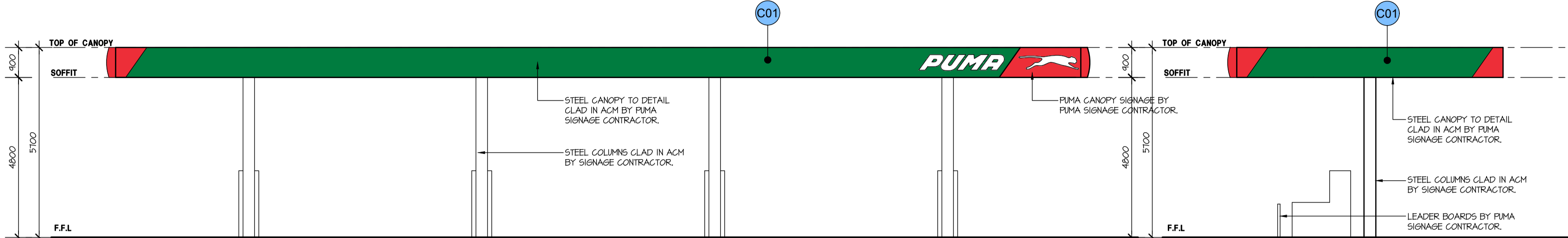
A1 SHEET

PROPOSED COMMERCIAL DEVELOPMENT
LOT 1001 & 3001, CNR MURDOCH DRIVE
AND FARRINGTON ROAD, MURDOCH
FABRIC PROPERTY

Date - 28.07.19
Design - RCP
Drawn - RCP
Checked - SDS
Scale - 1:100
Job No. - 0702
Dwg - DA03
Rev - B

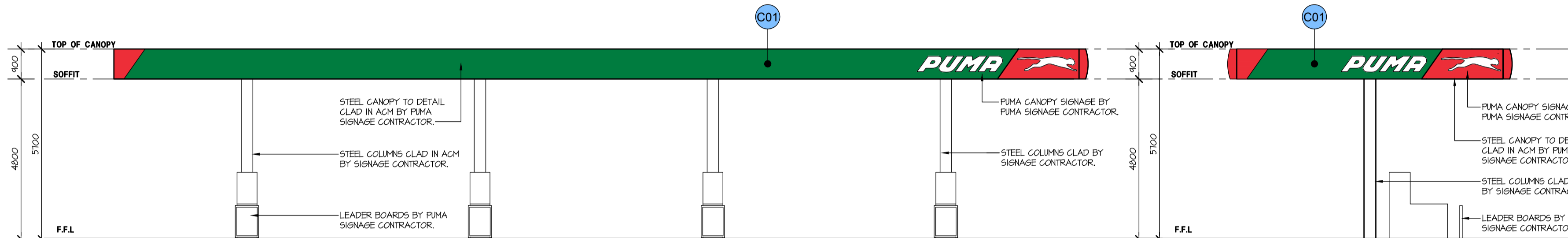


FLOOR PLAN
SCALE 1:100



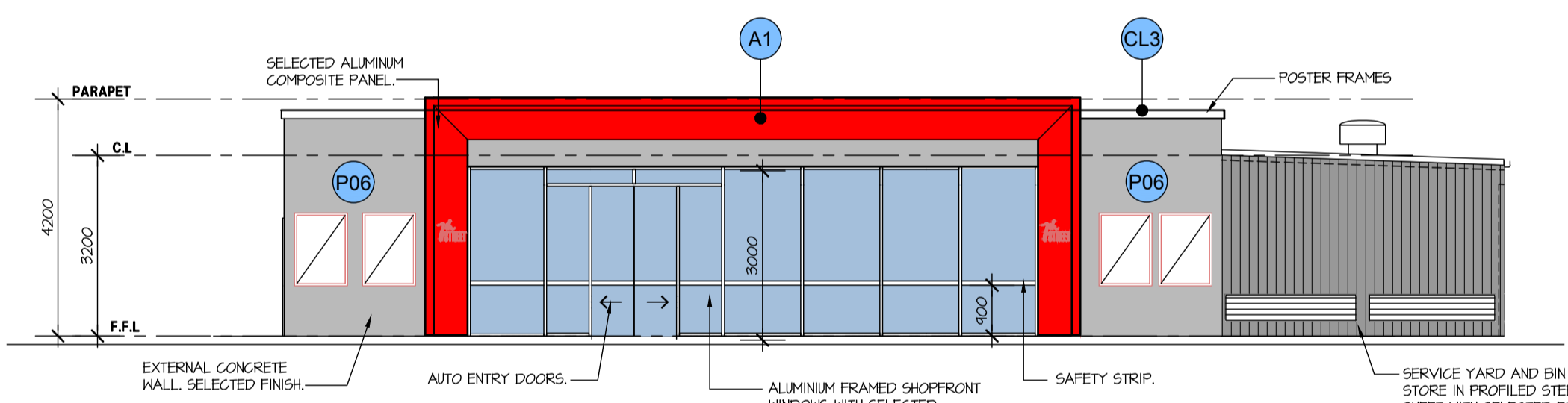
ELEVATION 21
SCALE 1:100

ELEVATION 22
SCALE 1:100

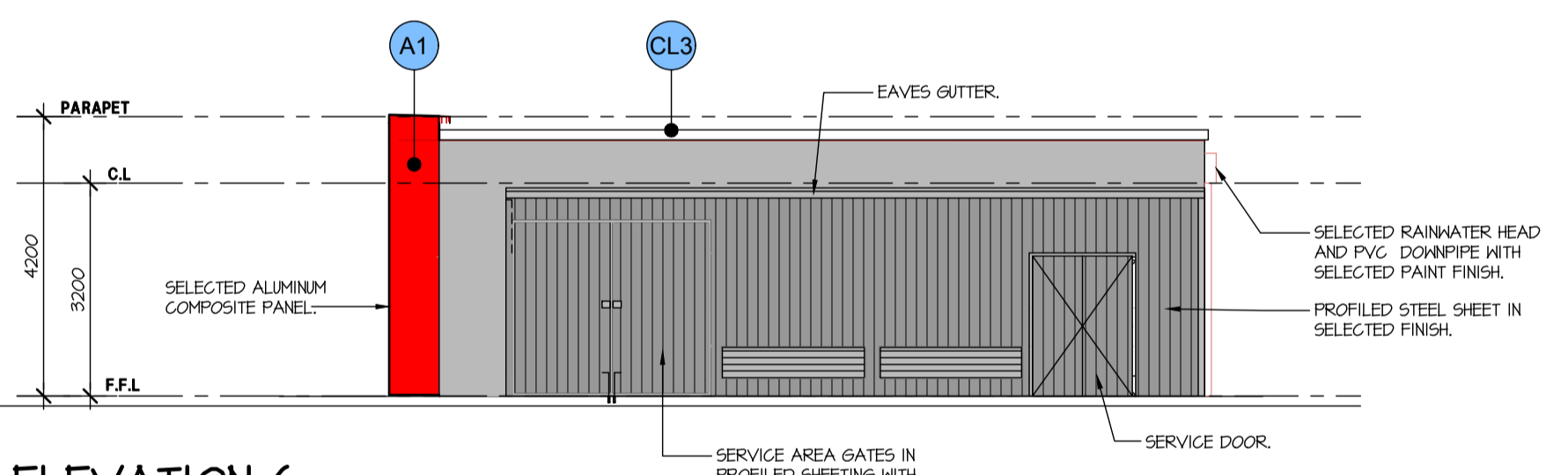


ELEVATION 23
SCALE 1:100

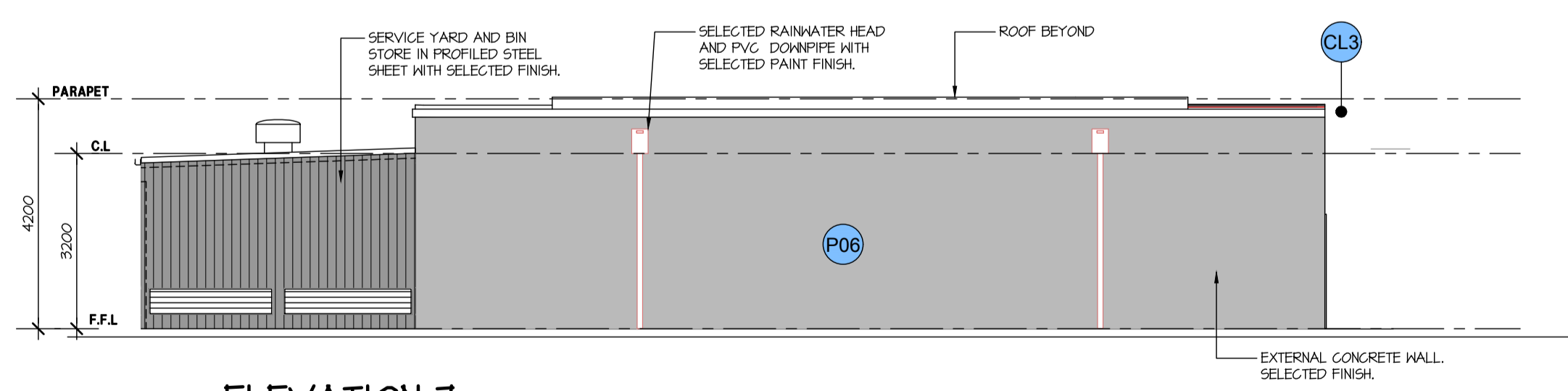
ELEVATION 24
SCALE 1:100



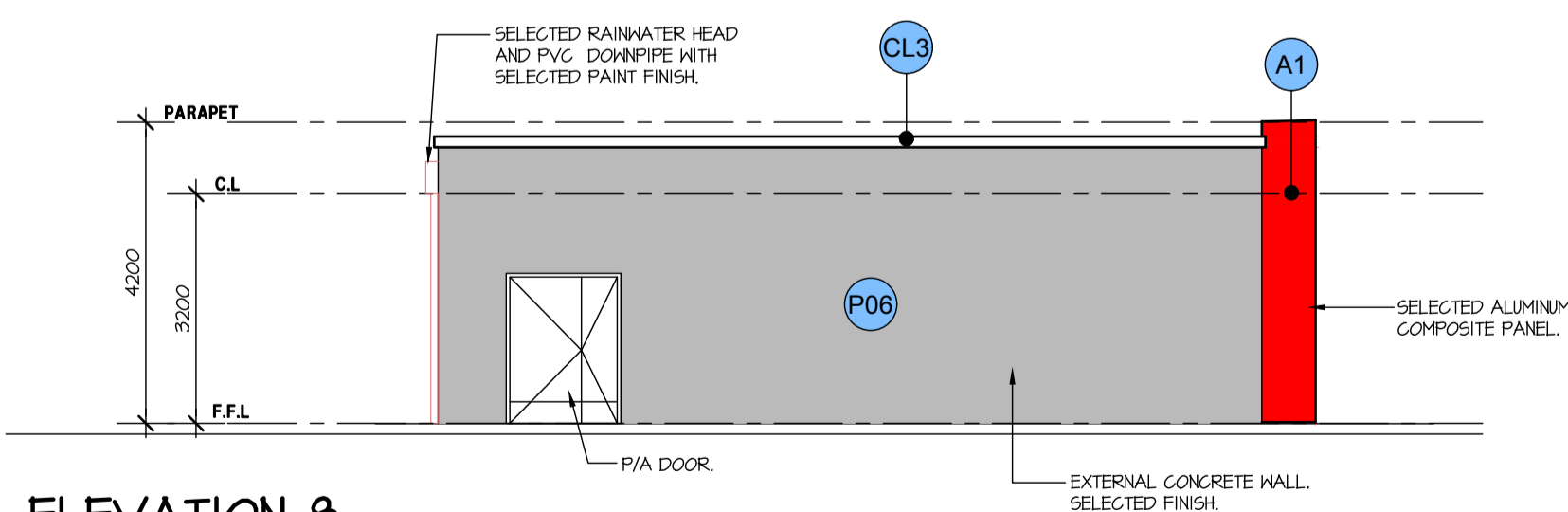
ELEVATION 5
SCALE 1:100



ELEVATION 6
SCALE 1:100



ELEVATION 7
SCALE 1:100



ELEVATION 8
SCALE 1:100

COLOUR LEGEND

■	A1	ALUMINUM COMPOSITE PANEL - RED SATIN FINISH
■	P06	DULUX 'WESTERN MYALL'
■	CL3	CUSTOM FOLDED FLASHING COLORBOND SURFIMIST FINISH
■	C01	ALUMINUM COMPOSITE PANEL - PUMA GREEN



HINDLEY & ASSOCIATES
PTY LTD
BUILDING DESIGNERS
166 STIRLING HIGHWAY
NEDLANDS WA 6009
PO BOX 199
NEDLANDS WA 6009
PHONE - 9386 6699
FAX - 9386 6700
admin@hindley.com.au

DEVELOPMENT APPLICATION

THIS DRAWING IS COPYRIGHT AND MUST NOT BE RETAINED, COPIED OR USED WITHOUT THE AUTHORITY OF HINDLEY & ASSOCIATES PTY LTD. DO NOT SCALE FROM THIS DRAWING.

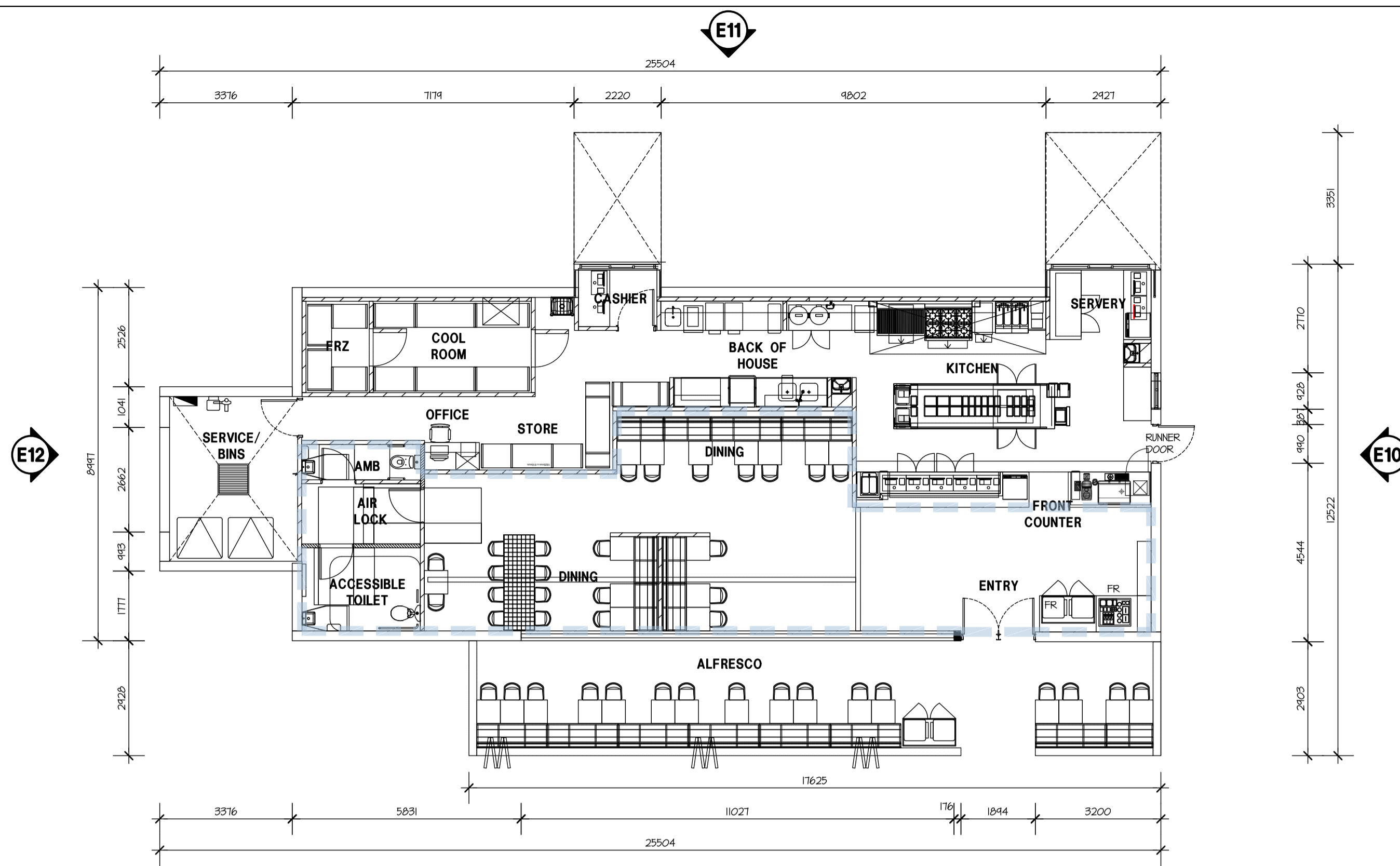
HINDLEY & ASSOCIATES P/L
AS TRUSTEE FOR
HINDLEY TRUST
ACN No. 088 989 904

NO.	DATE	REVISION	DRAWN	CHECK
A	30.07.19	DEVELOPMENT APPLICATION ISSUE	RCP	SDS
B	01.08.19	DEVELOPMENT APPLICATION ISSUE	RCP	SDS

A1 SHEET

PROPOSED COMMERCIAL DEVELOPMENT
LOT 1001 & 3001, CNR MURDOCH DRIVE
AND FARRINGTON ROAD, MURDOCH
FABRIC PROPERTY

Date - 28.07.19
Design - RCP
Drawn - RCP
Checked - SDS
Scale - 1:100
Job No. 0702
Dwg No. **DA04**
Rev - **B**



FLOOR PLAN NOTE

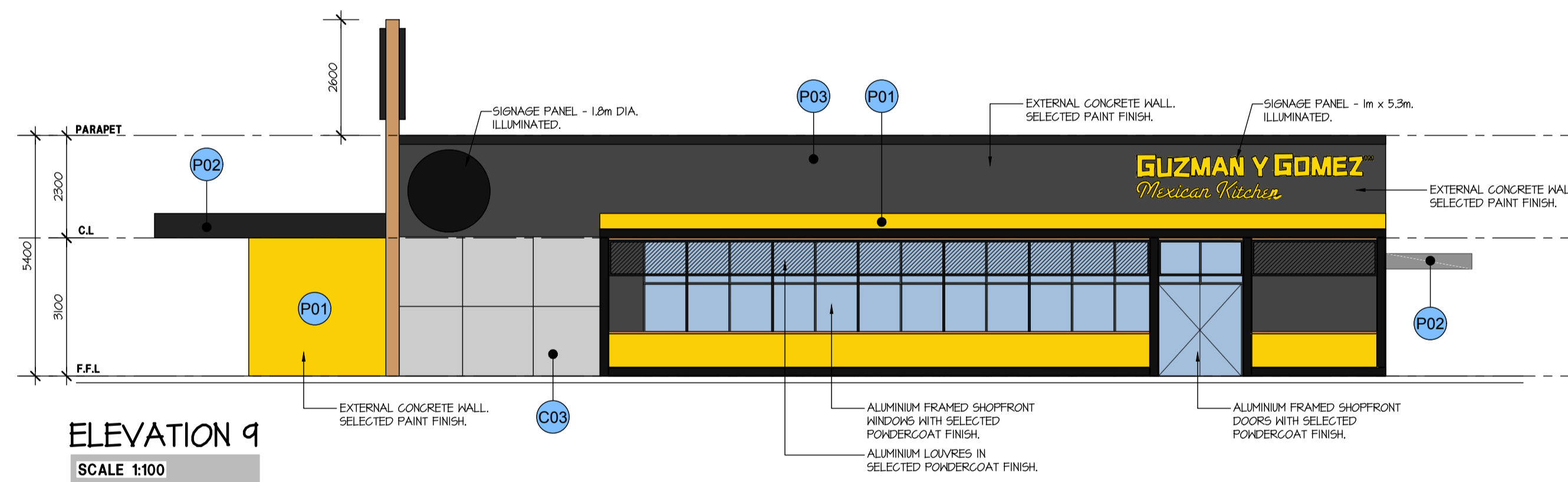
92m² - PUBLICLY ACCESSIBLE AREAS

COLOUR LEGEND

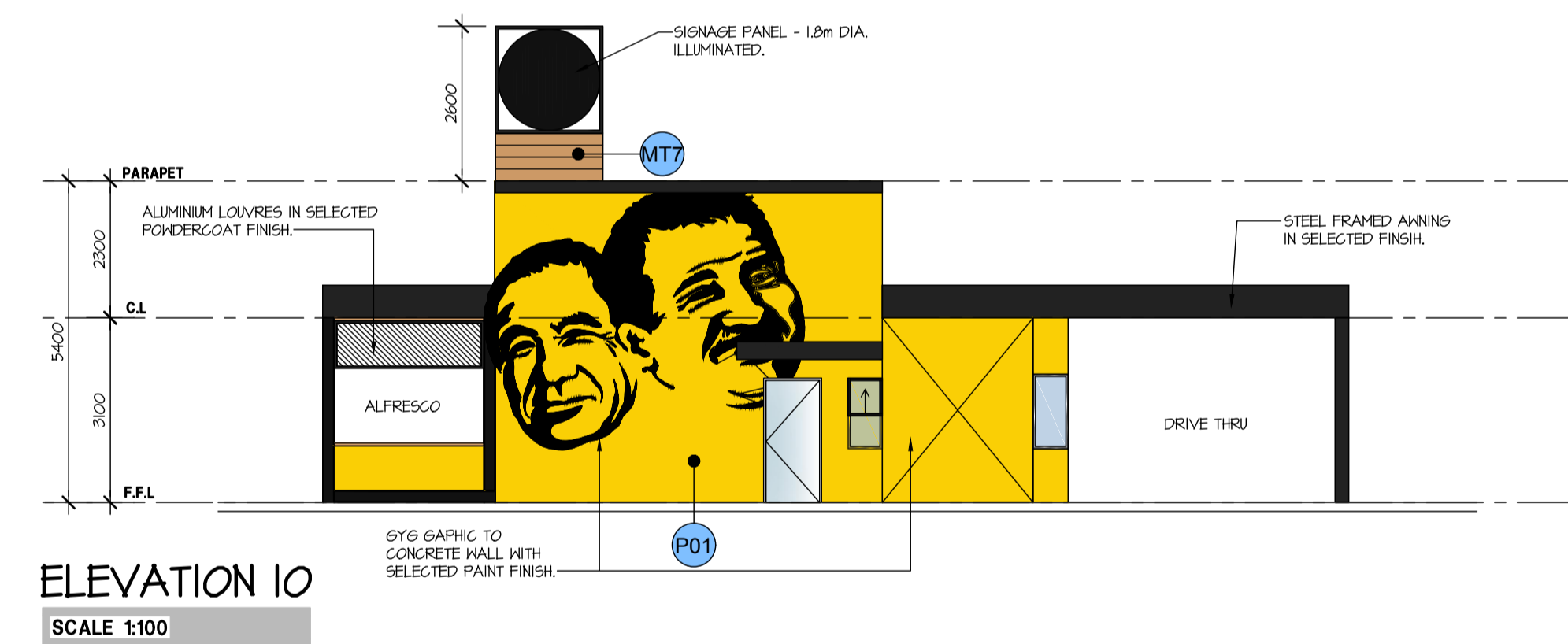
- P01 6Y6 'YELLOW PAINT'
- P02 6Y6 'BLACK PAINT'
- P03 6Y6 'GREY PAINT'
- C03 6Y6 'GREY PAINT'
- MT2 RECYCLED CORRUGATED CLADDING - PAINTED OUT YELLOW AND DISTRESSED.
- MT7 KNOTHOOD TIMBER LOOK ALUMINIUM

SERVICE YARD AND BIN STORE IN PROFILED STEEL SHEET WITH SELECTED FINISH.

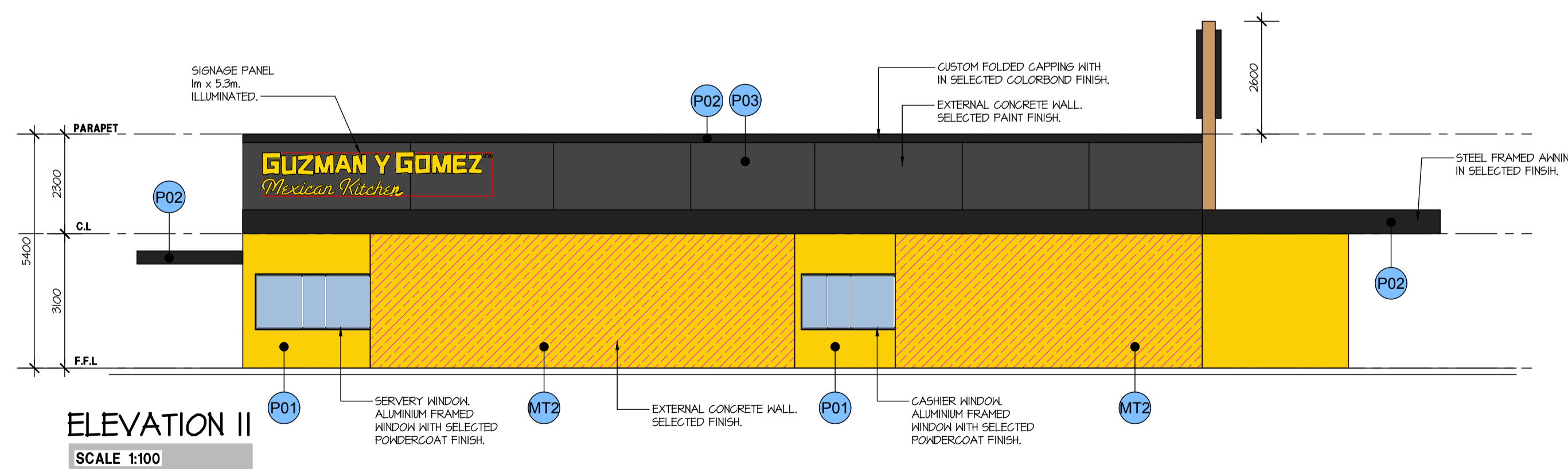
FLOOR PLAN
SCALE 1:100



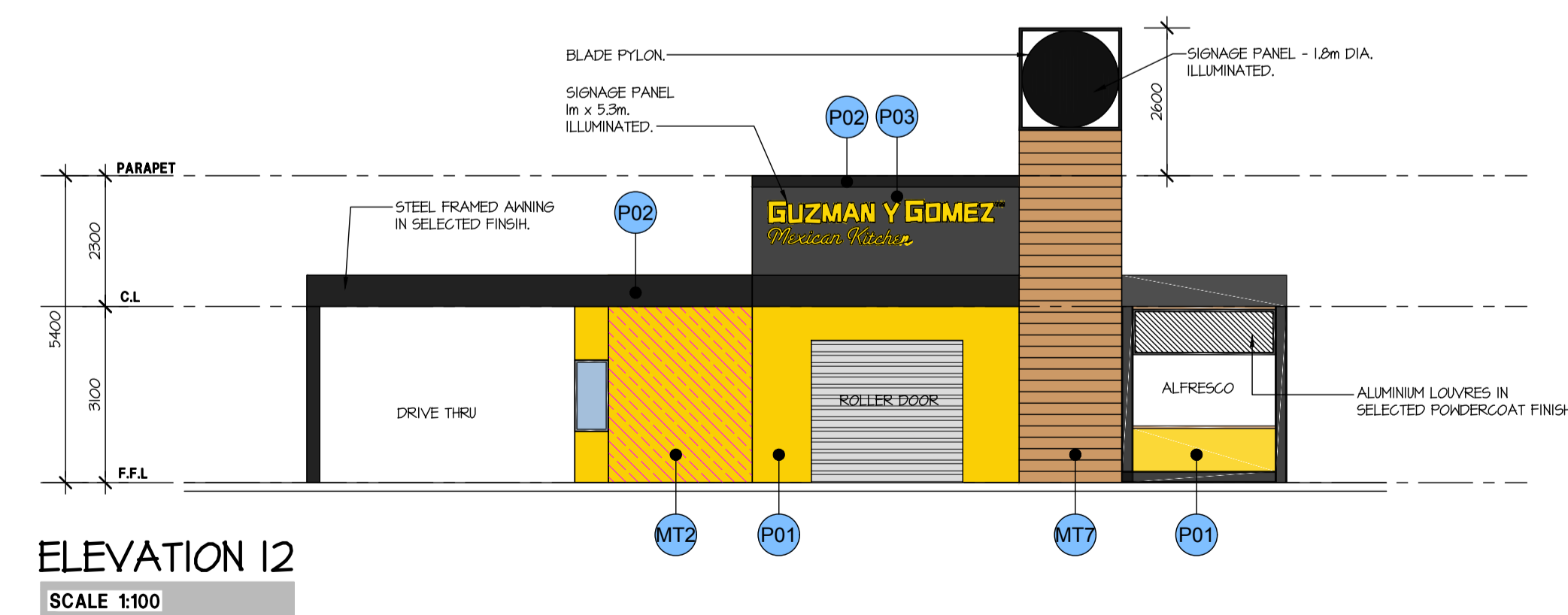
ELEVATION 9
SCALE 1:100



ELEVATION 10
SCALE 1:100



ELEVATION 11
SCALE 1:100



ELEVATION 12
SCALE 1:100



HINDLEY & ASSOCIATES
PTY LTD
BUILDING DESIGNERS
166 STIRLING HIGHWAY
NEDLANDS WA 6009
PO BOX 199
NEDLANDS WA 6009
PHONE - 9386 6699
FAX - 9386 6700
admin@hindley.com.au

DEVELOPMENT APPLICATION

THIS DRAWING IS COPYRIGHT AND MUST NOT BE RETAINED, COPIED OR USED WITHOUT THE AUTHORITY OF HINDLEY & ASSOCIATES PTY LTD. DO NOT SCALE FROM THIS DRAWING.

HINDLEY & ASSOCIATES P/L
AS TRUSTEE FOR
HINDLEY TRUST
ACN No. 088 989 904

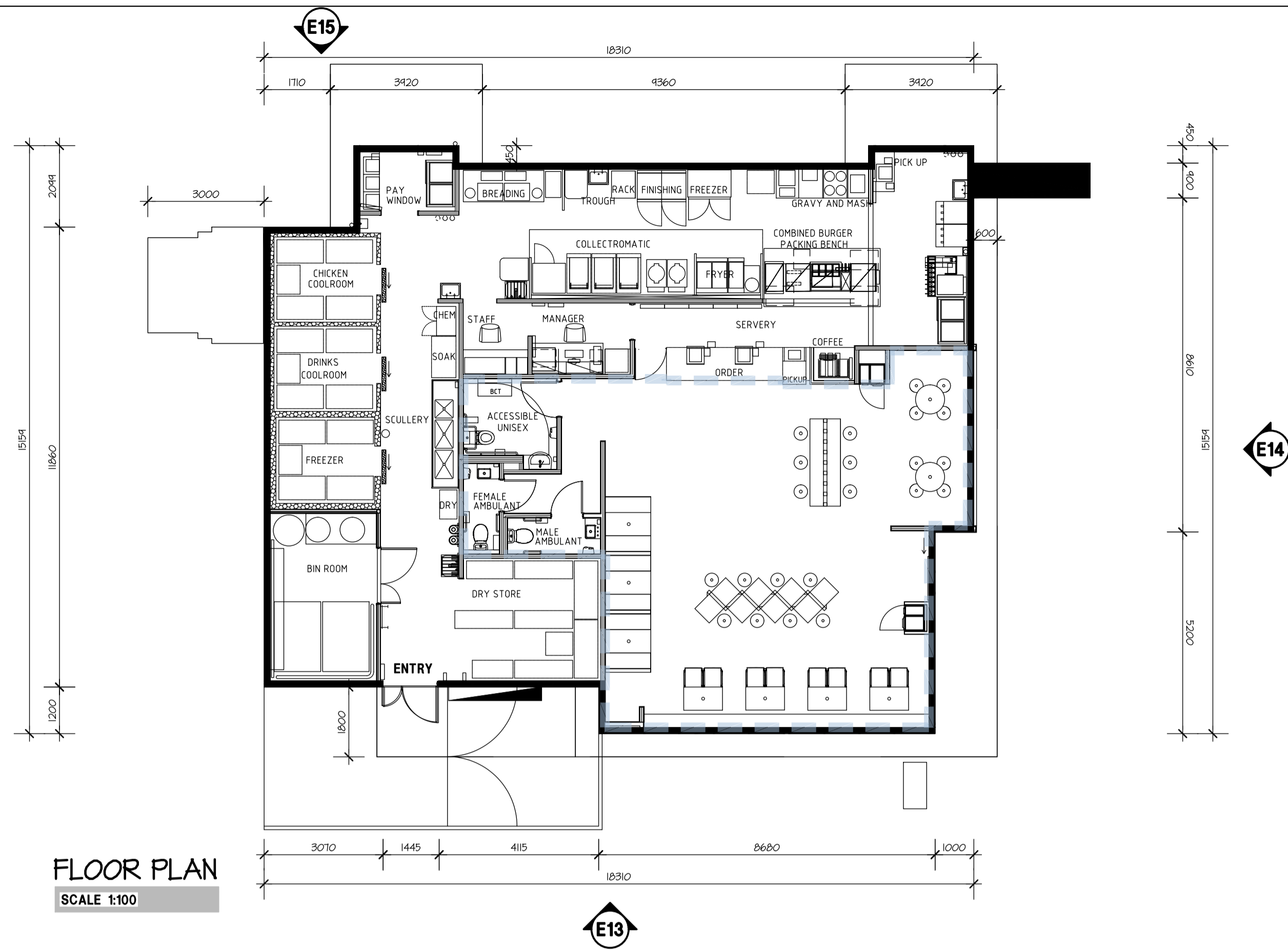
NO.	DATE	REVISION	DRAWN	CHECK
A	30.07.19	DEVELOPMENT APPLICATION ISSUE	RCP	SDS
B	01.08.19	DEVELOPMENT APPLICATION ISSUE	RCP	SDS



A1 SHEET

PROPOSED COMMERCIAL DEVELOPMENT
LOT 1001 & 3001, CNR MURDOCH DRIVE
AND FARRINGTON ROAD, MURDOCH
FABRIC PROPERTY

Date - 28.07.19
Design - RCP
Drawn - RCP
Checked - SDS
Scale - 1:100
Job No. 0702
Dwg No. **DA05**
Rev - **B**

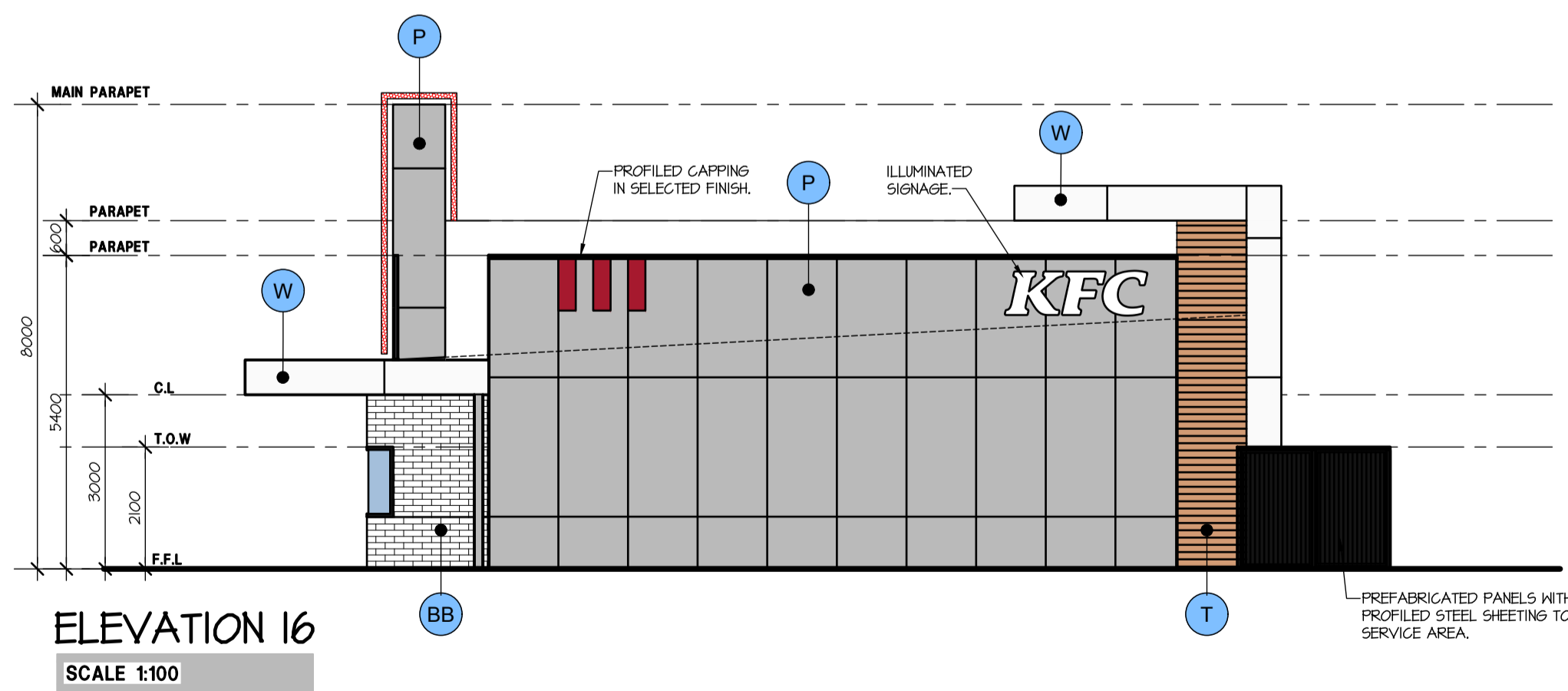
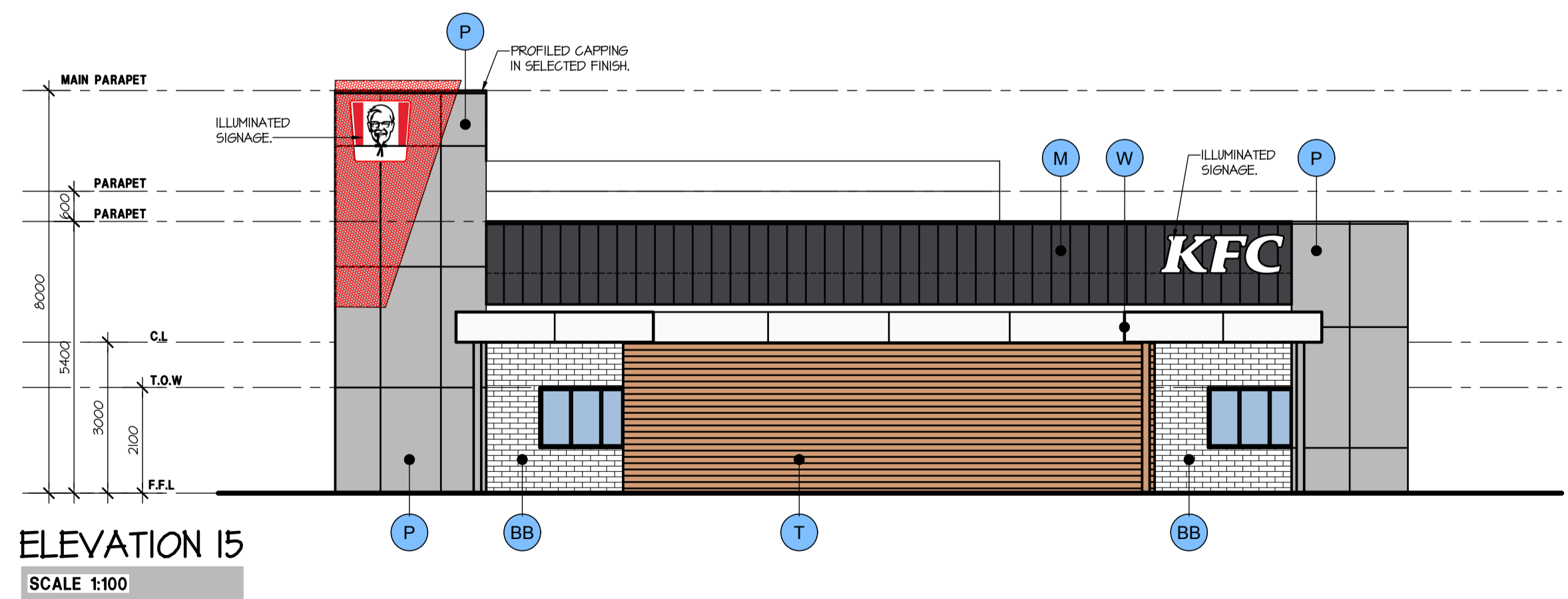
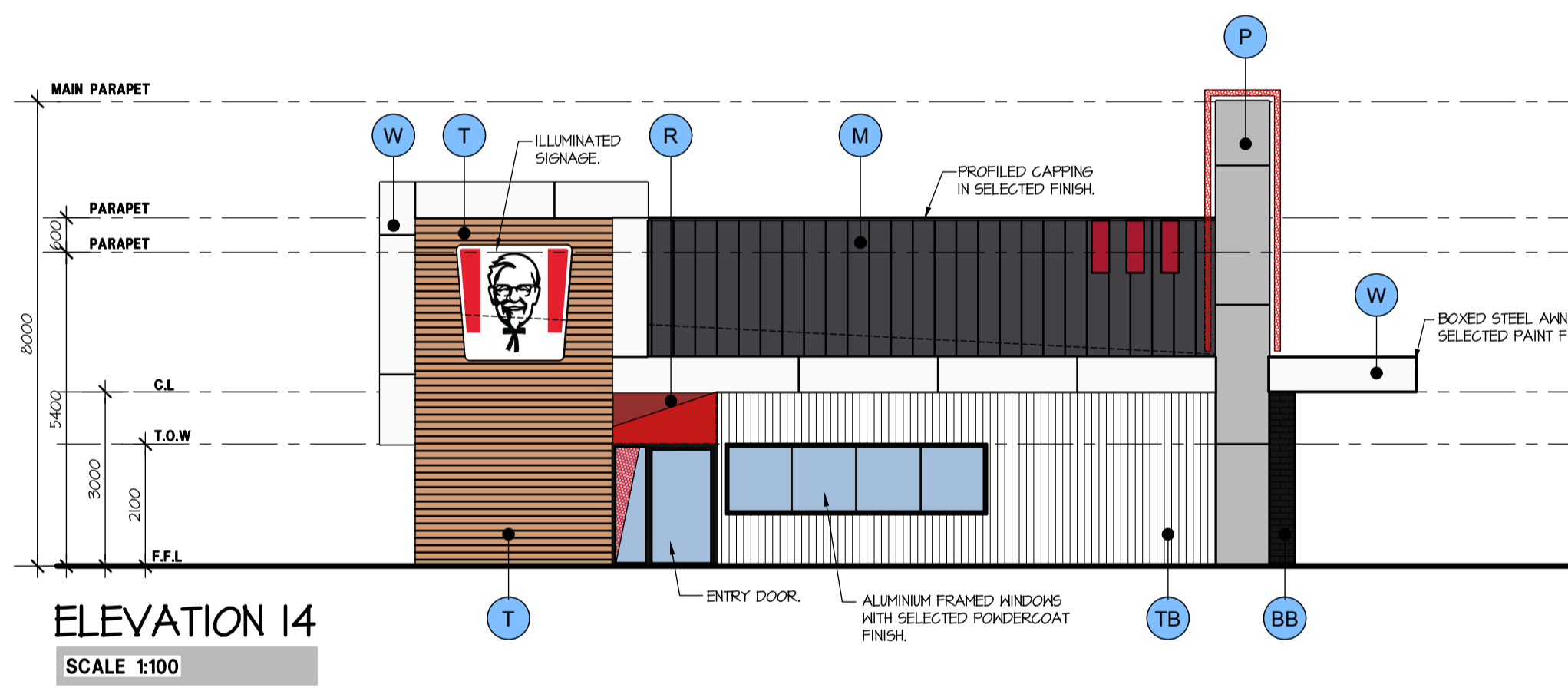
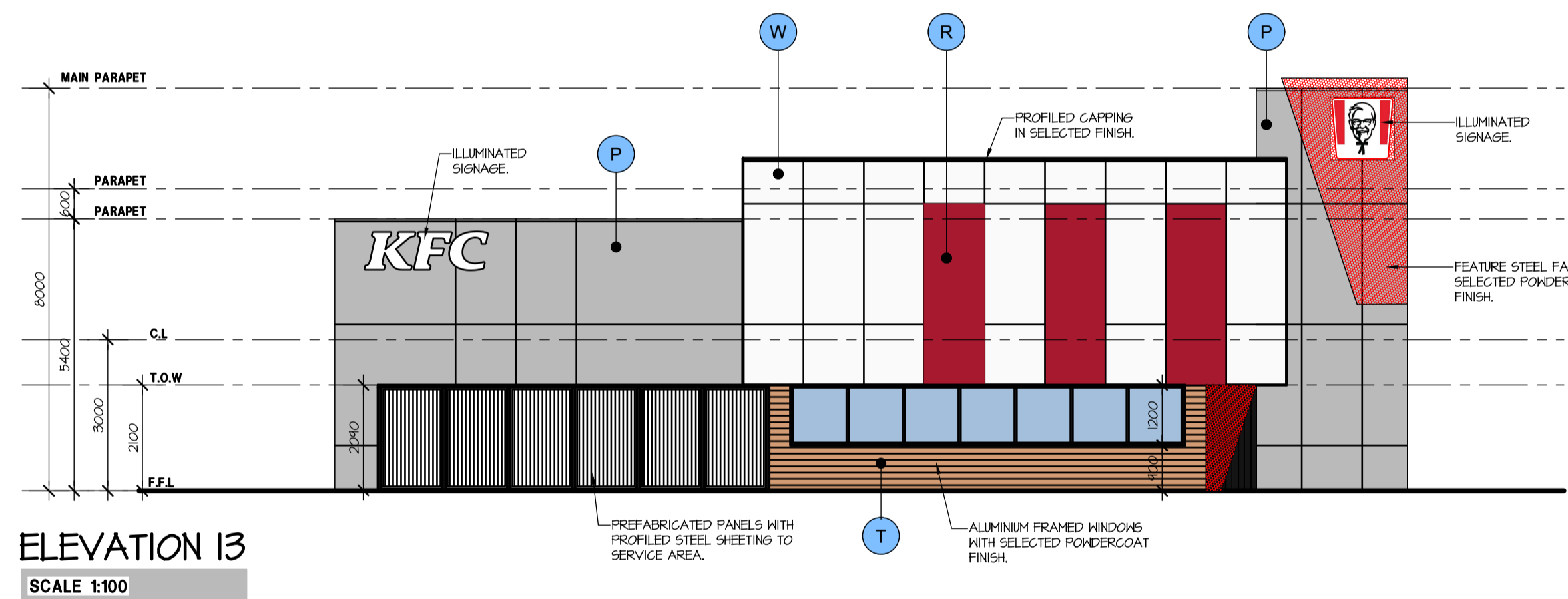


FLOOR PLAN NOTE

96m² - PUBLICLY ACCESSIBLE AREAS

COLOUR LEGEND

- R** DULUX RED BOX (RED) (A0639)
- W** DULUX ALABASTER (WHITE) KFC (A1016)
- M** LONGLINE 305 METAL HALL SHEETING COLORBOND MONUMENT (MID GREY)
- P** FC HALL SHEETING - DULUX PORTLAND (LIGHT GREY) (A1018)
- T** HEATHERTEX SELFLOK ECOGRROOVE WOODSMAN 150 PRE-PRIMED GLASSING FINISHED WITH:
 - 1st & 2nd COATS: DULUX HEATHERSHIELD LOW SHEEN AUDDOCS COLOUR YULIAR: (710139)
 - 3rd & 4th COATS: CABOTS EXTERIOR VARNISH STAIN GLOSS A0400603.
- BL** BLACK PAINT FINISH
- TB** JAMES HARDIE SKYON AXON VERTICALLY GROOVED PRE-PRIMED PANELS, GROOVE SPACING 133mm, PAINTED BLACK FINISH OR ALTERNATIVELY:
- BB** BLACK BRICK TILES FROM BETTER TILES, CODE BCC32, FINISH & COLOUR TBC



HINDLEY & ASSOCIATES
PTY LTD
BUILDING DESIGNERS

166 STIRLING HIGHWAY
NEDLANDS WA 6109

PO BOX 199
NEDLANDS WA 6109

PHONE - 9386 6699
FAX - 9386 6700
admin@hindley.com.au

DEVELOPMENT APPLICATION

THIS DRAWING IS COPYRIGHT AND MUST NOT BE RETAINED, COPIED OR USED WITHOUT THE AUTHORITY OF HINDLEY & ASSOCIATES PTY LTD. DO NOT SCALE FROM THIS DRAWING.

HINDLEY & ASSOCIATES P/L
AS TRUSTEE FOR
HINDLEY TRUST
ACN No. 088 989 904

NO.	DATE:	REVISION:	DRAWN:	CHECK:
A	30.07.19	DEVELOPMENT APPLICATION ISSUE	RCP	SDS
B	01.08.19	DEVELOPMENT APPLICATION ISSUE	RCP	SDS



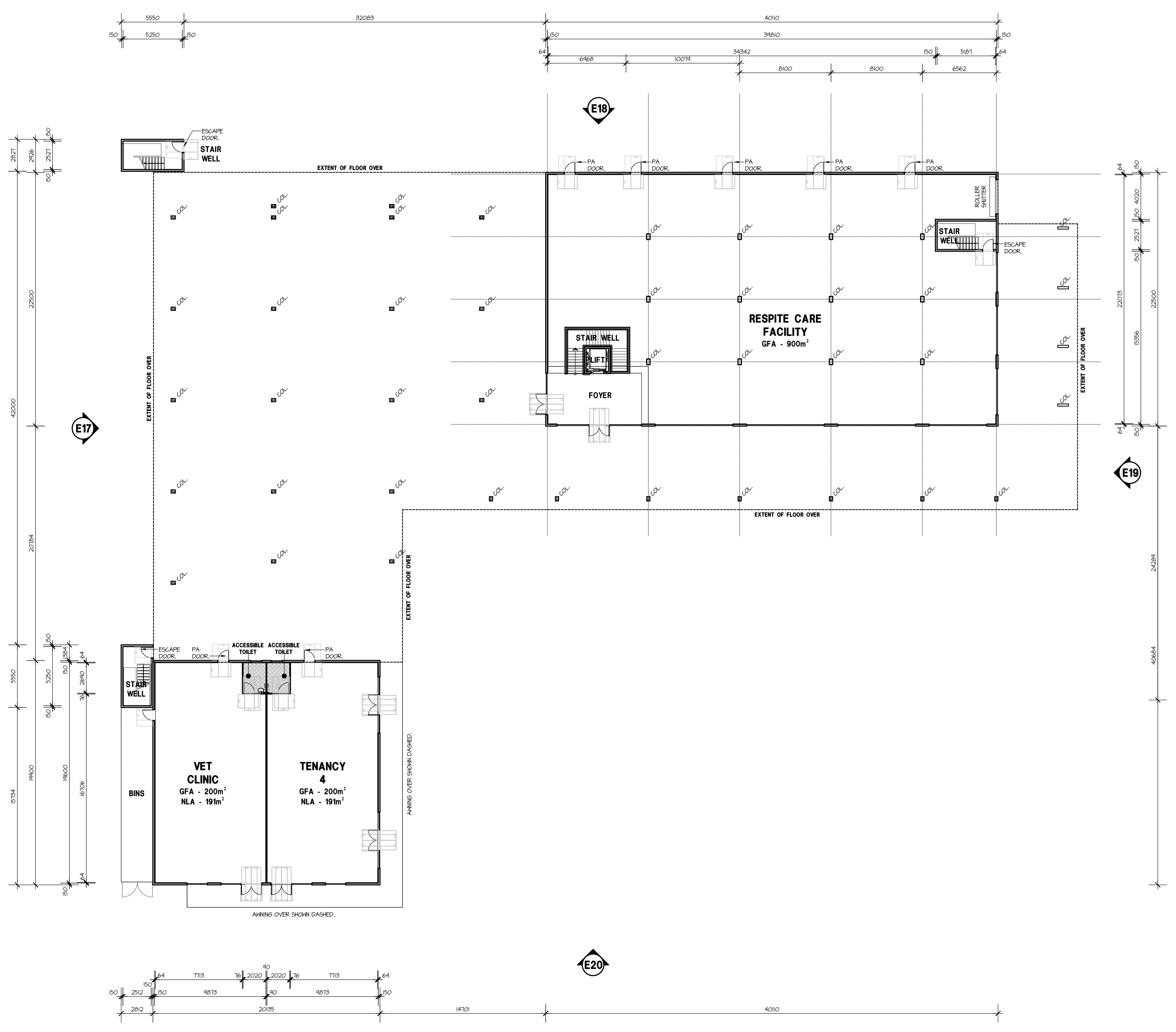
THE CONTRACTOR AND HIS SUBCONTRACTORS ARE TO VERIFY ALL DIMENSIONS ON SITE BEFORE MARKING SHOP DRAWINGS OR COMMENCING MANUFACTURE.

THIS IS A COMPUTER GENERATED DRAWING AND SHALL NOT BE ALTERED BY HAND.

A1 SHEET

PROPOSED COMMERCIAL DEVELOPMENT
LOT 1001 & 3001, CNR MURDOCH DRIVE
AND FARRINGTON ROAD, MURDOCH
FABRIC PROPERTY

Date - 28.07.19
Design - RCP
Drawn - RCP
Checked - SDS
Scale - 1:100
Job No. 0702
Dwg - DA06
Rev - B



HINDLEY & ASSOCIATES
PTY LTD
BUILDING DESIGNERS

166 STIRLING HIGHWAY
NEDLANDS WA 6009

PO BOX 199
NEDLANDS WA 6909

PHONE - 9386 6699
FAX - 9386 6700
admin@hindley.com.au

DEVELOPMENT APPLICATION

THIS DRAWING IS COPYRIGHT AND MUST NOT BE
RETAINED, COPIED OR USED WITHOUT THE
AUTHORITY OF HINDLEY & ASSOCIATES PTY LTD.
DO NOT SCALE FROM THIS DRAWING.
THE CONTRACTOR AND HIS SUBCONTRACTORS ARE
TO VERIFY ALL DIMENSIONS ON SITE BEFORE MAKING
SHOP DRAWINGS OR COMMENCING MANUFACTURE.
THIS IS A COMPUTER GENERATED DRAWING AND
SHALL NOT BE ALTERED BY HAND.

HINDLEY & ASSOCIATES P/L
AS TRUSTEE FOR
HINDLEY TRUST
ACN No. 088 989 904

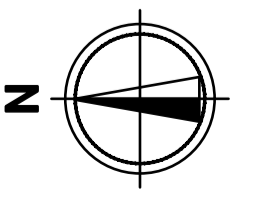
BUILDING DESIGNERS ASSOCIATION OF WA INC.

NO:	DATE:	REVISION:	DRAWN:	CHECK:

A1 SHEET

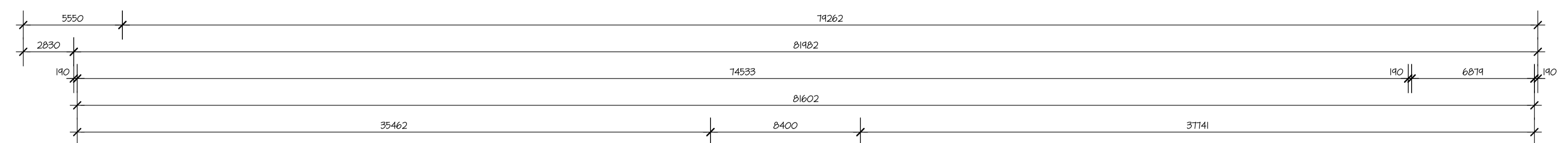
RESPITE CARE FACILITY & VETERINARY CLINIC - GROUND FLOOR PLAN

SCALE 1:200

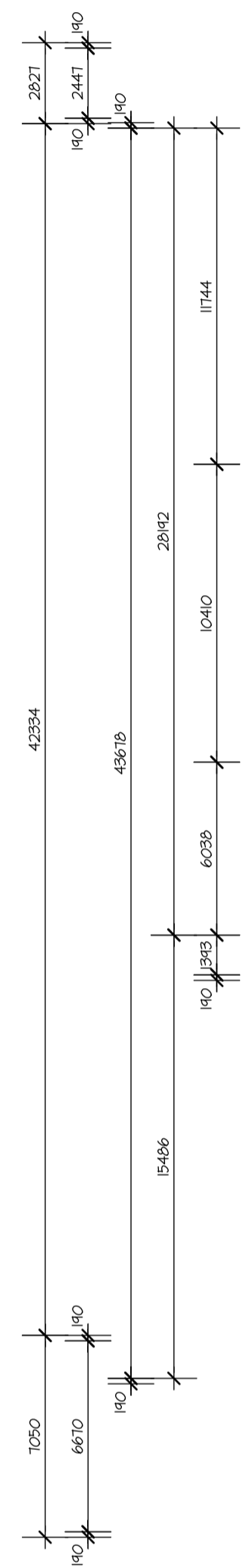
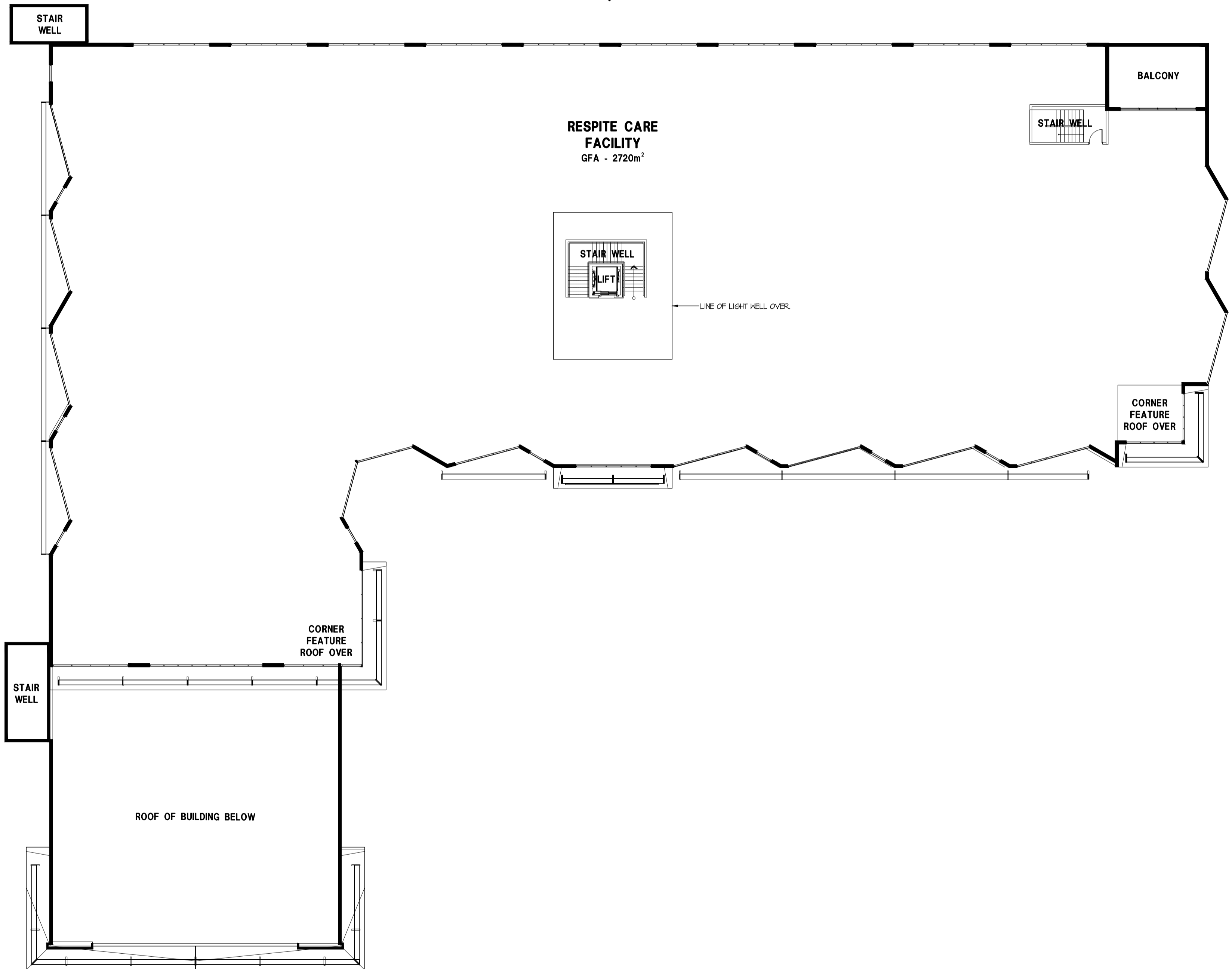


**PROPOSED COMMERCIAL DEVELOPMENT
LOT 1001 & 3001, CNR MURDOCH DRIVE
AND FARRINGTON ROAD, MURDOCH
FABRIC PROPERTY**

Date - 30.07.19
Design - RCP
Drawn - CPH
Checked - SDS
Scale - 1:200
Job No. - 0702
Dwg - **DA07**
Rev - **B**

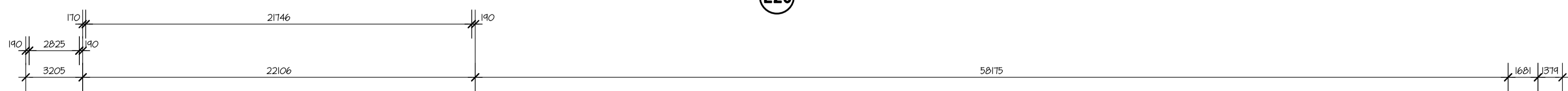
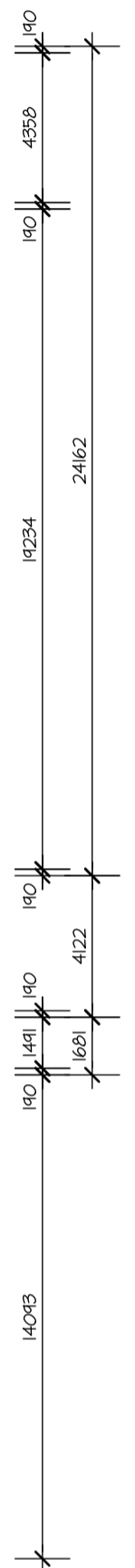


E18



E17

E19



E20

THIS DRAWING IS COPYRIGHT AND MUST NOT BE RETAINED, COPIED OR USED WITHOUT THE AUTHORITY OF HINDLEY & ASSOCIATES PTY LTD.
DO NOT SCALE FROM THIS DRAWING.

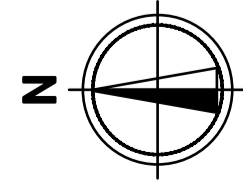
HINDLEY & ASSOCIATES P/L
AS TRUSTEE FOR
HINDLEY TRUST
ACN No. 088 989 904

NO.	DATE	REVISION	DRAWN	CHECK
A	30.07.19	DEVELOPMENT APPLICATION ISSUE	RCP	SDS
B	01.08.19	DEVELOPMENT APPLICATION ISSUE	RCP	SDS
.
.
.
.
.
.



A1 SHEET

RESPITE CARE FACILITY - FIRST FLOOR PLAN
SCALE 1:200



PROPOSED COMMERCIAL DEVELOPMENT
LOT 1001 & 3001, CNR MURDOCH DRIVE
AND FARRINGTON ROAD, MURDOCH
FABRIC PROPERTY

Date - 30.07.19
Design - RCP
Drawn - CPH
Checked - SDS
Scale - 1:200
Job No. - 0702
Dwg - DA08
Rev - B



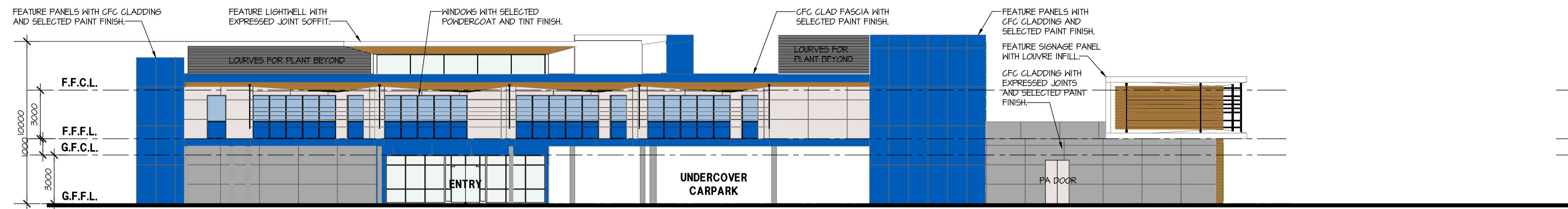
HINDLEY & ASSOCIATES
PTY LTD
BUILDING DESIGNERS

166 STIRLING HIGHWAY
NEDLANDS WA 6009

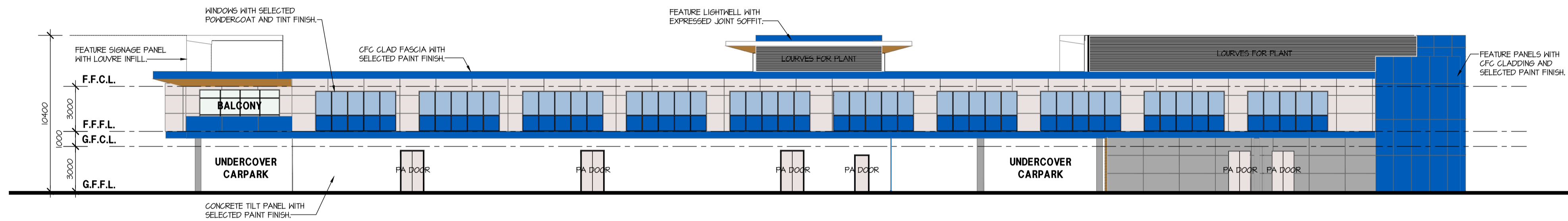
PO BOX 199
NEDLANDS WA 6909

PHONE - 9386 6699
FAX - 9386 6700
admin@hindley.com.au

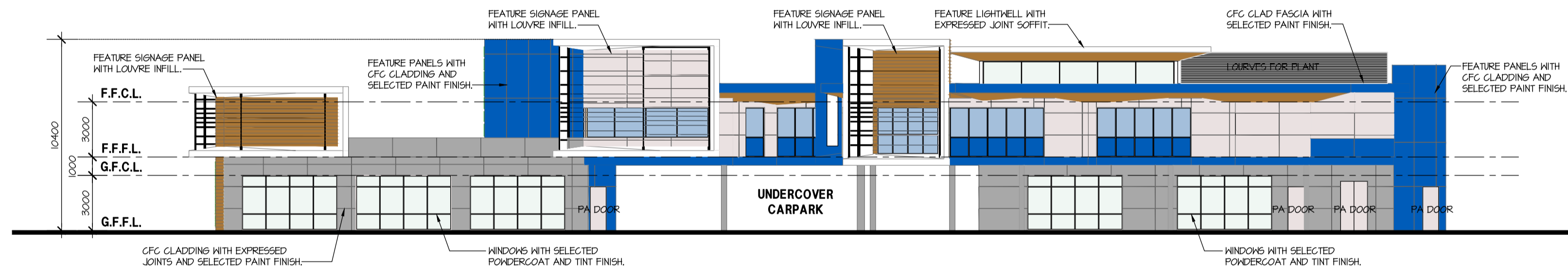
DEVELOPMENT APPLICATION



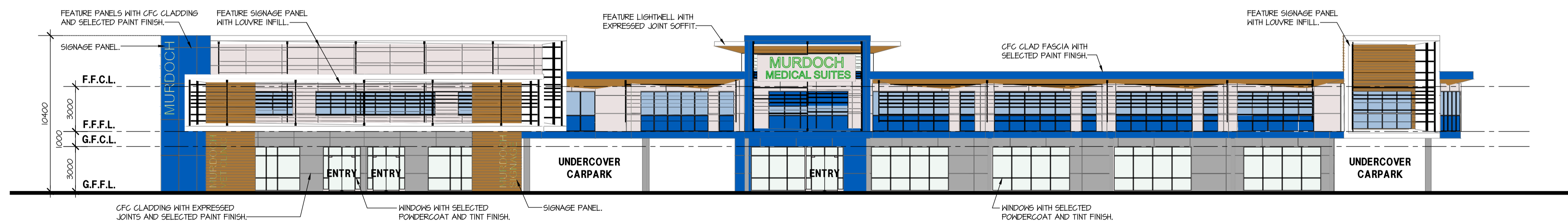
ELEVATION 17
SCALE 1:200



ELEVATION 18
SCALE 1:200



ELEVATION 19
SCALE 1:200



ELEVATION 20
SCALE 1:200



HINDLEY & ASSOCIATES
PTY LTD
BUILDING DESIGNERS

166 STIRLING HIGHWAY
NEDLANDS WA 6909

PO BOX 199
NEDLANDS WA 6909

PHONE - 9386 6699
FAX - 9386 6700
admin@hindley.com.au

DEVELOPMENT APPLICATION

THIS DRAWING IS COPYRIGHT AND MUST NOT BE
RETAINED, COPIED OR USED WITHOUT THE
AUTHORITY OF HINDLEY & ASSOCIATES PTY LTD.

DO NOT SCALE FROM THIS DRAWING.

THE CONTRACTOR AND HIS SUBCONTRACTORS ARE
TO VERIFY ALL DIMENSIONS ON SITE BEFORE MARKING
SHOP DRAWINGS OR COMMENCING MANUFACTURE.

THIS IS A COMPUTER GENERATED DRAWING AND
SHALL NOT BE ALTERED BY HAND.

HINDLEY & ASSOCIATES P/L
AS TRUSTEE FOR
HINDLEY TRUST
ACN No. 088 989 904

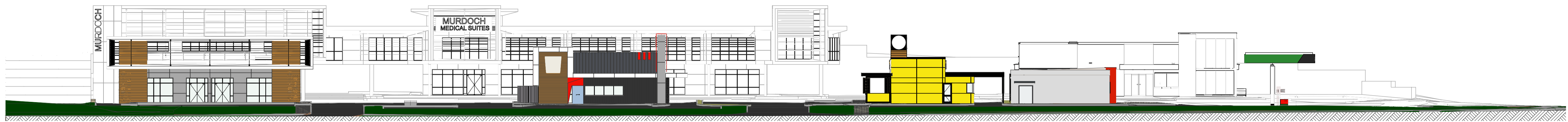


NO.	DATE	REVISION	DRAWN	CHECK
A	30.07.19	DEVELOPMENT APPLICATION ISSUE	RCP	SDS
B	01.08.19	DEVELOPMENT APPLICATION ISSUE	RCP	SDS
.
.
.
.
.
.
.
.

A1 SHEET

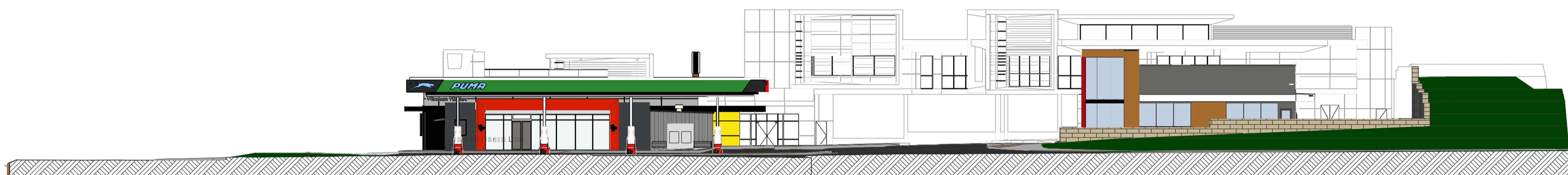
**PROPOSED COMMERCIAL DEVELOPMENT
LOT 1001 & 3001, CNR MURDOCH DRIVE
AND FARRINGTON ROAD, MURDOCH
FABRIC PROPERTY**

Date - 30.07.19
Design - RCP
Drawn - CPH
Checked - SDS
Scale - 1:200
Job No. - 0702
Dwg - **DA09**
Rev - **B**



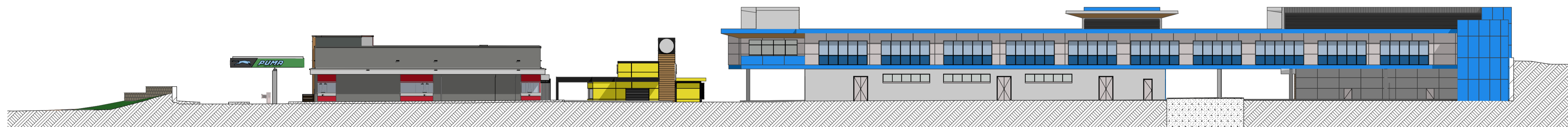
OE1 - WESTERN BOUNDARY ELEVATION

SCALE 1:250



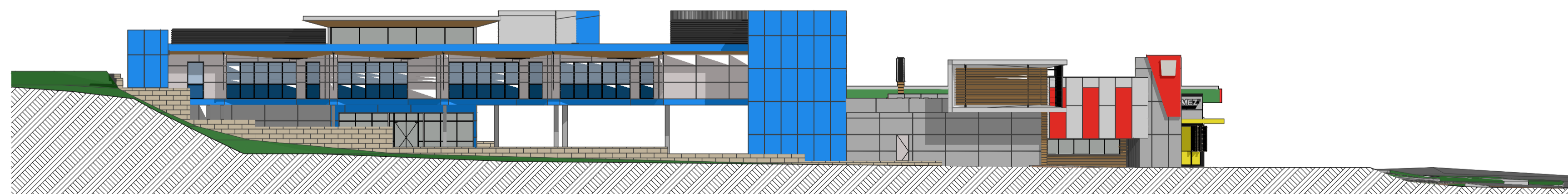
OE2 - SOUTHERN BOUNDARY ELEVATION

SCALE 1:250



OE3 - EASTERN BOUNDARY ELEVATION

SCALE 1:250



OE4 - NORTHERN BOUNDARY ELEVATION

SCALE 1:250



HINDLEY & ASSOCIATES
PTY LTD
BUILDING DESIGNERS

166 STIRLING HIGHWAY
NEDLANDS WA 6909

PO BOX 199
NEDLANDS WA 6909

PHONE - 9386 6699
FAX - 9386 6700
admin@hindley.com.au

DEVELOPMENT APPLICATION

THIS DRAWING IS COPYRIGHT AND MUST NOT BE
RETAINED, COPIED OR USED WITHOUT THE
AUTHORITY OF HINDLEY & ASSOCIATES PTY LTD.
DO NOT SCALE FROM THIS DRAWING.
THE CONTRACTOR AND HIS SUBCONTRACTORS ARE
TO VERIFY ALL DIMENSIONS ON SITE BEFORE MAKING
SHOP DRAWINGS OR COMMENCING MANUFACTURE.
THIS IS A COMPUTER GENERATED DRAWING AND
SHALL NOT BE ALTERED BY HAND.

HINDLEY & ASSOCIATES P/L
AS TRUSTEE FOR
HINDLEY TRUST
ACN No. 088 989 904



NO.	DATE	REVISION	DRAWN	CHECK
A	30.07.19	DEVELOPMENT APPLICATION ISSUE	RCP	SDS
B	01.08.19	DEVELOPMENT APPLICATION ISSUE	RCP	SDS
.
.
.
.
.
.

A1 SHEET

**PROPOSED COMMERCIAL DEVELOPMENT
LOT 1001 & 3001, CNR MURDOCH DRIVE
AND FARRINGTON ROAD, MURDOCH
FABRIC PROPERTY**

Date - 30.07.19
Design - RCP
Drawn - RCP
Checked - SDS
Scale - 1:250
Job No. - 0702
Dwg - DA10
Rev - B



P1 - FARRINGTON ROAD
NOT TO SCALE



P2 - CORNER OF FARRINGTON ROAD AND MURDOCH DRIVE
NOT TO SCALE



P3 - MURDOCH DRIVE EXTENSION
NOT TO SCALE



P4 - MURDOCH DRIVE EXTENSION
NOT TO SCALE



HINDLEY & ASSOCIATES
PTY LTD
BUILDING DESIGNERS

166 STIRLING HIGHWAY
NEDLANDS WA 6909

PO BOX 199
NEDLANDS WA 6909

PHONE - 9386 6699
FAX - 9386 6700
admin@hindley.com.au

DEVELOPMENT APPLICATION

THIS DRAWING IS COPYRIGHT AND MUST NOT BE
RETAINED, COPIED OR USED WITHOUT THE
AUTHORITY OF HINDLEY & ASSOCIATES PTY LTD.

DO NOT SCALE FROM THIS DRAWING.

THE CONTRACTOR AND HIS SUBCONTRACTORS ARE
TO VERIFY ALL DIMENSIONS ON SITE BEFORE MAKING
SHOP DRAWINGS OR COMMENCING MANUFACTURE.

THIS IS A COMPUTER GENERATED DRAWING AND
SHALL NOT BE ALTERED BY HAND.

HINDLEY & ASSOCIATES P/L
AS TRUSTEE FOR
HINDLEY TRUST
ACN No. 088 989 904



BUILDING DESIGNERS ASSOCIATION OF AUSTRALIA

NO:	DATE:	REVISION:	DRAWN:	CHECK:
A	30.07.19	DEVELOPMENT APPLICATION ISSUE	RCP	SDS
B	01.08.19	DEVELOPMENT APPLICATION ISSUE	RCP	SDS
.
.
.
.
.
.
.
.

A1 SHEET

**PROPOSED COMMERCIAL DEVELOPMENT
LOT 1001 & 3001, CNR MURDOCH DRIVE
AND FARRINGTON ROAD, MURDOCH
FABRIC PROPERTY**

Date - 30.07.19
Design - RCP
Drawn - RCP
Checked - SDS
Scale - N.T.S.
Job No. - 0702
Dwg - DA11
Rev - B



P5 - CENTRAL DRIVEWAY AERIAL VIEW



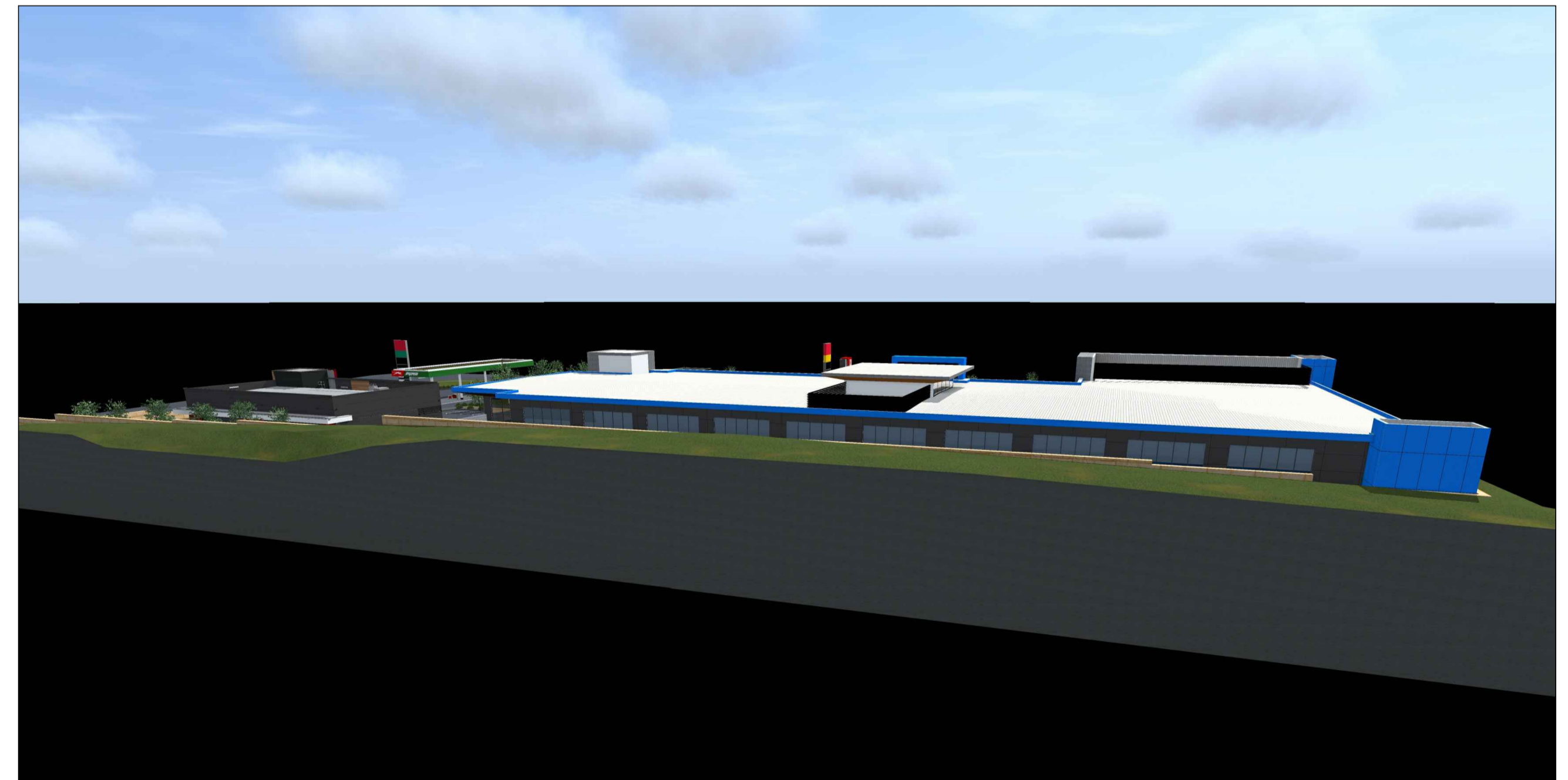
P7 - VET CLINIC & TENANCY

NOT TO SCALE



P7 - NORTHERN NEIGHBOURING SITE

NOT TO SCALE



P8 - EASTERN NEIGHBOURING SITE

NOT TO SCALE



HINDLEY & ASSOCIATES
PTY LTD
BUILDING DESIGNERS

166 STIRLING HIGHWAY
NEDLANDS WA 6009

PO BOX 199
NEDLANDS WA 6909

PHONE - 9386 6699
FAX - 9386 6700
admin@hindley.com.au

DEVELOPMENT APPLICATION

THIS DRAWING IS COPYRIGHT AND MUST NOT BE
REPRODUCED, COPIED OR USED WITHOUT THE
AUTHORITY OF HINDLEY & ASSOCIATES PTY LTD.
DO NOT SCALE FROM THIS DRAWING.

THE CONTRACTOR AND HIS SUBCONTRACTORS ARE
TO VERIFY ALL DIMENSIONS ON SITE BEFORE MAKING
SHOP DRAWINGS OR COMMENCING MANUFACTURE.

THIS IS A COMPUTER GENERATED DRAWING AND
SHALL NOT BE ALTERED BY HAND.

HINDLEY & ASSOCIATES P/L
AS TRUSTEE FOR
HINDLEY TRUST
ACN No. 088 989 904



NO:	DATE:	REVISION:	DRAWN:	CHECK:
A	30.07.19	DEVELOPMENT APPLICATION ISSUE	RCP	SDS
B	01.08.19	DEVELOPMENT APPLICATION ISSUE	RCP	SDS
.
.
.
.
.
.

A1 SHEET

**PROPOSED COMMERCIAL DEVELOPMENT
LOT 1001 & 3001, CNR MURDOCH DRIVE
AND FARRINGTON ROAD, MURDOCH
FABRIC PROPERTY**

Date - 30.07.19
Design - RCP
Drawn - RCP
Checked - SDS
Scale - N.T.S.
Job No. - 0702
Dwg - DA12
Rev - B



P9 - FARRINGTON ROAD
NOT TO SCALE



P10 - MURDOCH DRIVE EXTENSION ELEVATION
NOT TO SCALE



HINDLEY & ASSOCIATES
PTY LTD
BUILDING DESIGNERS
166 STIRLING HIGHWAY
NEDLANDS WA 6909
PO BOX 199
NEDLANDS WA 6909
PHONE - 9386 6699
FAX - 9386 6700
admin@hindley.com.au

DEVELOPMENT APPLICATION

THIS DRAWING IS COPYRIGHT AND MUST NOT BE
REPRODUCED, COPIED OR USED WITHOUT THE
AUTHORITY OF HINDLEY & ASSOCIATES PTY LTD.
DO NOT SCALE FROM THIS DRAWING.
THE CONTRACTOR AND HIS SUBCONTRACTORS ARE
TO VERIFY ALL DIMENSIONS ON SITE BEFORE MAKING
SHOP DRAWINGS OR COMMENCING MANUFACTURE.
THIS IS A COMPUTER GENERATED DRAWING AND
SHALL NOT BE ALTERED BY HAND.

HINDLEY & ASSOCIATES P/L
AS TRUSTEE FOR
HINDLEY TRUST
ACN No. 088 989 904

NO.	DATE	REVISION	DRAWN	CHECK
A	30.07.19	DEVELOPMENT APPLICATION ISSUE	RCP	SDS
B	01.08.19	DEVELOPMENT APPLICATION ISSUE	RCP	SDS
.
.
.
.
.
.

A1 SHEET

**PROPOSED COMMERCIAL DEVELOPMENT
LOT 1001 & 3001, CNR MURDOCH DRIVE
AND FARRINGTON ROAD, MURDOCH
FABRIC PROPERTY**

Date - 30.07.19
Design - RCP
Drawn - RCP
Checked - SDS
Scale - N.T.S.
Job No. - 0702
Dwg - DA13
Rev - B