



City of
Melville

Active Link

Connect with your community



Easy English

Hard words

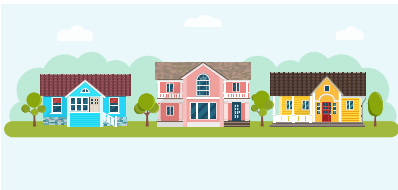
This fact sheet has some hard words.

The first time we write a hard word

- the word is in **blue**
- we write what the hard word means.



This fact sheet is written by the City of Melville.



In this fact sheet **we** means the City of Melville.

About this fact sheet

This fact sheet is about **Activelink**.

Activelink is a program that helps people who find it hard to join community activities.

Activities can be:

- Sport for example, soccer or tennis.

or

- **Hobbies** and groups.

Hobbies means activities you enjoy.

For example, music or art class.



Activelink will help people in our community to make friends.

How does it work?



We want people in our community to have good

- Health
- Skills
- Friends
- **Self confidence**

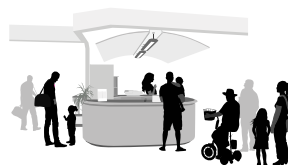


Self confidence is
when you feel good
about yourself.

We will work with
different groups to
make Activelink work.

For example

- Sports clubs
- Community groups
- Social activities like art
and dance
- Community centres.



We would like your
activities to happen
at places in the City
of Melville.



Who can use Activelink?

Activelink is for people who

- live in the City of Melville

and

- have **low income.**



Low income means you do **not** get much money to pay for things.



You can show us proof of low income with a Centrelink card.

If you do **not** have a Centrelink card you can talk to us.

Activelink is also for people who find it hard to join in activities.

For example

- people with disability



- Aboriginal and Torres Strait Islander people



- people who are new to Australia.



How much money can you get for activities?

You can get up to
\$200 each year to pay
for activities.



We give you a voucher to
say how much money you
get for your activity. We
pay the group directly for
your activity.

How to apply

To apply for Activelink get a form

- on our website

www.melvillecity.com.au/activelink

or

- from a City of Melville centre.

The centres with forms are



City of Melville Civic Centre

10 Almondbury Road, Booragoon

Call 9364 0666

Blue Gum

Community Centre

33 - 35 Moolyeen Road, Brentwood

Call 9364 0148



Willagee Community Centre

Corner of Archibald Street and

Winnacott Street, Willagee

Call 9364 0848

More information



Call

1300 635 845

or

9364 0666.



Email

activelink@melville.wa.gov.au



Write to

Locked Bag 1

Booragoon WA 6954



Visit the office

City of Melville Civic Centre

10 Almondbury Road,

Booragoon

Website

www.melvillecity.com.au/activelink

National Relay Service

TTY 133 677

Then ask for **08 9364 0666**

Speech relay **1300 555 727**

Then ask for **08 9364 0666**

Internet and captioned relay

www.relayservice.gov.au



Telephone

Interpreter Service

131 450



