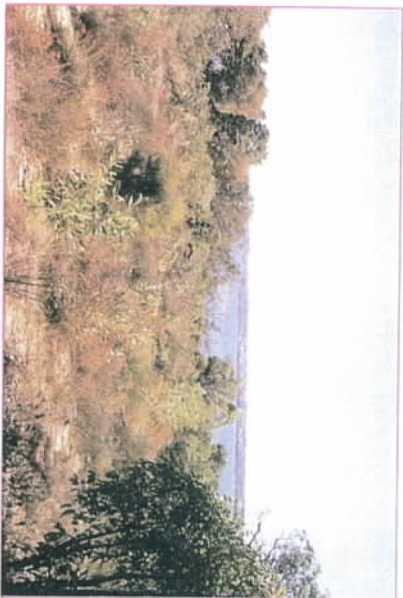


A Wonderful Place To Visit

Wireless Hill is 41 hectares of Banksia and Jarrah woodland located in Applecross overlooking the Swan River.



This unique bushland is one of the largest areas of natural bushland in Perth. The Park offers recreational facilities including play equipment, BBQ's and toilets, and has a large number of walk trails.

Famous Flowers

Wireless Hill is famous for its wonderful displays of native wildflowers in spring. These wildflowers were once common all throughout Perth but housing developments and degradation of native bushland has seen their numbers greatly decrease.

Kangaroo Paws are a great attraction for visitors from overseas at Wireless Hill



The signs on the Wildflower walk are colour photographs, which show you in exquisite detail how special the local WA Wildflowers are. They also inform you about the growth habit and size of the plant so you can try and spot it in the bushland on your walk



Rusty Spider Orchid (*Caladenia ferruginea*)
Flowers September- October 20cm herb

This is an example of a wildflower walk sign. It informs you when the flowers are present and where to look for it in the bushland

For more information about the Wildflower Walk contact the City of Melville on 93640691.

For information on the environmental activities undertaken by the Friends of Wireless Hill contact 93170222.

Special thanks to Lottery West and Friends of Wireless Hill for providing funding and photographs.



Purple Flag



Pink Fairy Orchid

Welcome to the Wireless Hill Wildflower Walk



Tinsel Lily flowering at Wireless Hill

Enjoy a walk on our special wildflower walk through Wireless Hill and learn about the often small and intricate native flowers, which are local to this lovely bushland.



Killing with Curiosity

Because of Perth's declining bushlands, native wildflowers in Wireless Hill are unique because they are relatively rare to



be found in such large numbers. Over the years, visitors have unwittingly trampled plants by venturing off paths to look more closely. Long term this kills native plants, including wildflowers. *Unauthorised tracks damage plants.*

Paths of Protection

In order to protect them, the City of Melville and the Friends of Wireless Hill have received a special grant from Lottery West to create a unique wildflower walk so visitors can appreciate their natural beauty without going off paths.

The wildflower walk meanders through Banksia woodland for over 1.5km. The track is easy walking through some of the loveliest areas of wildflowers in Wireless Hill.



Wildflowers in the reserve can be seen almost all year round, and you can use the path to spot wildflowers in their natural habitat from the path itself.



This Pink Calytrix flowers in mid summer

The walk also provides you with another unique opportunity by allowing you to learn more about the wildflowers while you enjoy your walk. 60 individual signs have been created in full colour to give you information about each wildflower along the walk.

Where is the Wildflower Walk?

Entry to Wireless Hill is from Almondbury Road or McCallum Crescent, Ardress.

The walk is found opposite the first car park in Wireless Hill on the central ring road on Telefunken Drive. It can also be accessed from Davey St by taking the orange bitumen paths and following the signs. Parking is in the car park at Wireless Hill or at Garden City, a short walk to the east. See the map below for details.

We encourage you to come and enjoy these unique west Australian flowers in their natural habitat.

PLEASE STAY ON PATHS AT ALL TIMES

